



MICHELLE LUJAN GRISHAM
GOVERNOR

HOWIE C. MORALES
LT. GOVERNOR

New Mexico
ENVIRONMENT DEPARTMENT

525 Camino de los Marquez, Suite 1
Santa Fe, NM 87505-1816
Phone (505) 476-4300
Fax (505) 476-4375
www.env.nm.gov



JAMES C. KENNEY
CABINET SECRETARY

JENNIFER J. PRUETT
DEPUTY SECRETARY

PUBLIC INVOLVEMENT PLAN (PIP)
Air Quality Bureau Air Permit Application

Version 2.24.21

Date: December 17, 2020 updated March 1, 2021
Applicant: Mosaic Potash Carlsbad, Inc.
Facility Name: Mosaic Potash Carlsbad, Inc.
Air Quality Permit Application Number: P039R3M1
Location: 1361 Potash Mines Road, Carlsbad, NM 88220
Latitude: 32.414722 Longitude: -103.935833

1. Overview of Air Quality Bureau's plan of action for addressing the community's needs and concerns for processing Air Quality Permit Applications:

The New Mexico Environment Department (Department), Air Quality Bureau (AQB) developed this Public Involvement Plan (PIP) for the processing of air quality permit applications in accordance with the requirements at 20.2.70 NMAC for this facility. This air quality regulation does require public participation outreach throughout different stages of the permitting process. The AQB will meet the public participation requirements by following this PIP, which includes all applicable policy, regulatory and statutory public participation requirements.

In developing this PIP, community participation needs for this permitting action were assessed to ensure appropriate promotion of public outreach by identifying whether there is a combination of environmental and demographic factors (i.e., low income community, minority community, limited English proficiency individuals, Linguistically Isolated Households, etc.) that may impact public participation. This assessment identifies community outreach needs and provides for public access opportunities above and beyond statutorily mandated requirements, and underscores the provision of adequate public access to information about this permit application.

As much as possible, public participation and informational activities related to this permit application will be held within the regulatory timelines outlined below.

- a. AQB regulations at 20.2.70 NMAC require that the application must be ruled complete or incomplete no more than 60 days after receipt. The AQB will publish a public notice for this application in a newspaper of general circulation in the area closest to the location of

the facility, when the draft permit is issued for comment. See section 4.c below for more information.

The public notice contains a paragraph in Spanish directing Spanish speaking interested parties to call the AQB at (505) 476-5557 to speak to Spanish speaking staff for additional information regarding this permitting action.

- b. Normally the AQB would provide a copy of the public notice, the air quality permit application, and this PIP to the nearest NMED field office, but due to current Covid-19 access restrictions for protection of both public employees and the protection of the general public these materials are instead available on the NMED website (see section 2.a).
- c. AQB regulations require that the public notice be sent to interested parties maintained on a mailing list. See Section 4.b below for more information.
- d. AQB regulations require that the public notice must be sent to the “affected programs” as defined at 20.2.70 NMAC. See Section 4.f below for more information.
- e. In accordance with the evaluation of the site location and associated demographics, no other means for disseminating information, such as radio ads, flyers, posters, etc. is necessary.
- f. Public notice shall be followed by a 30-day public comment period that starts on the day that the notice is published in the newspaper. See Section 4.g below for details.
- g. AQB regulations require that the permit must be issued, issued subject to conditions, or denied within eighteen (18) months after the department deems the application administratively complete.

2. Contact list of AQB staff with phone numbers and email addresses:

- a. **AQB contact for questions about this application or PIP (included in public notices and outreach materials):**

Joseph Kimbrell
New Mexico Environment Department
Air Quality Bureau
525 Camino de los Marquez, Suite 1
Santa Fe, New Mexico, 87505
505-476-4347
Joseph.Kimbrell@state.nm.us

Electronic copies will be available at the following link, which will be included in public notices and outreach materials as appropriate: <https://www.env.nm.gov/air-quality/aqb-p-current-permitting-activites/>

- b. **Non-English Language Speaker Assistance and Accommodations**

The AQB may hold public meetings, open houses, stakeholder meetings, and/or a formal hearing depending on the interest in the application. Language assistance services may be

arranged for translation of documents for meetings, for translators during meetings and for obtaining services for persons with disabilities. A phone-based interpretation service may be available for languages other than English.

3. Description of the community/stakeholder groups:

To provide for adequate public participation opportunities and meaningful involvement of persons regarding this permit application and to address potential or existing environmental justice areas, the affected communities must first be identified, informed about proposed environmental actions affecting the community, and invited to share their comments and concerns. The EJSCREEN tool developed by the U.S. Environmental Protection Agency (EPA) helps identify communities that are low income and minority populations that may benefit from a variety of approaches for notification and outreach communication.

Using the 4-mile radius along a linear line through the center of the facility, the results of the EJScreen ACS Summary Report (attached) are listed in the table below.

Population and Income Data			
Total Population:	254	Per capita income of community:	\$33,033
Minority Population, %:	41	US Per Capita Income*:	\$29,829
Total number of households:	103	Total Number (and Percent) of Linguistically Isolated Households:	1 (0.97%)

*US Per Capita Income 2013-2017; <https://www.census.gov/quickfacts/fact/table/US/HSG030210>

Population by Race, %		Population by Ability to Speak English, %	
White	94	Speak Only English	77
Black	0	Non-English at Home	23
American Indian	3	Speak English "very well"	20
Asian	0	Speak English "well"	3
Pacific Islander	0	Speak English "not well"	1
Other Race	0	Speak English "not at all"	0
Two or More Races	2	Speak English "less than very well"	3

Linguistically Isolated Household Details, %		List other Languages (if applicable)
Speak Spanish	100	////////////////////////////////////
Speak Other Indo-European Languages	0	
Speak Asian Pacific Island Languages	0	
Speak Other Languages	0	

There are no stakeholder groups for this facility. See Section 4.

History of public involvement in air permitting during the last 10 years: none.

It is important for the AQB to incorporate the linguistic and communication needs of this community when conducting public outreach and participation activities. To help accomplish this, the AQB will provide information in English, in public comment notices, public meeting notices (if applicable), and other announcements (radio broadcasts, brochures, signs, postcards, etc.) and strive to make public participation efforts as inclusive as possible within AQB budget and time limitations. Under normal circumstances the nearest NMED Field Office would serve as an access area for the AQB to leave hard copies of important documents and information about how to comment on this permit application, but due to Covid-19 restrictions to protect both the general public and public employees, materials will not be available in hard copy, but can be found on the AQB webpage (see Section 2.a above).

4. Detailed actions and outreach activities the AQB Permitting Section will take to reach the affected public:

a. Overview

Based on the demographics report discussed in the PIP, the history of public involvement at the facility and the facility background, basic information about public involvement opportunities will be in English. This information will include how to request materials in Spanish or to speak with AQB staff through an interpreter. Further details about public participation for this activity are outlined below.

The AQB maintains information regarding this air quality permit application at the following locations:

- i. On the Air Quality Bureau website, see Section 2.a above.**
- ii. At the District Office listed in Section 1.b above.**
- iii. At the main office location:**
New Mexico Environment Department
Air Quality Bureau
525 Camino de los Marquez, Suite 1
Santa Fe, New Mexico, 87505

b. Postal Mailing or E-Mailing of Notices to Persons on the Facility-Specific Mailing List

AQB regulations require notification to persons who have expressed interest in applications. The AQB maintains a mailing list that includes individuals interested in permit applications from particular facilities or geographic areas. Notifications may be sent through physical mail and/or an email.

The list also includes addresses of states, local air pollution control programs, and Indian tribes and pueblos, that are within 50 miles of the source.

c. Notices in the State Newspaper and Local Newspapers

The public notice for this permit application will be published in English in the Legal Section of the Carlsbad Current Argus newspaper.

Carlsbad Current Argus: English: <http://www.currentargus.com/>

d. Mailing to the Governor or President of Indian Tribes, Pueblos or Nations

AQB regulations and the evaluation of the facility location and associated demographics, require notification to Tribes, Pueblos or Nations about this permit application for facilities located within a specified distance.

There are no Tribes, Pueblos, or Nations within 50 miles of this facility.

e. Affected Local, State, or Federal Government Agencies, and Active Land Grants

AQB regulations require identifying and notifying local, state or federal government agencies about this permit application.

The following affected Local, State, or Federal Government Agencies will be notified by email: US EPA Region VI.

f. Public Meeting Notices, Public Comment Notices, and Other Notices

AQB may hold public meetings, open houses, stakeholder meetings, and/or a formal hearing depending on the interest in the application. Based on historical information and the results of the initial screening, there is no public meeting planned at this time for this permit application. If it is determined that a public meeting will be required, notice will be provided to the community as follows:

- 1) Via a newspaper of general circulation in the area closest to the location of the facility.
- 2) Locations commonly frequented by the general public, such as a nearby post office, public library, or city hall.
- 3) All persons and organizations that have expressed interest and are on a list maintained by AQB.
- 4) Via a public service announcement to at least one radio or television station which serves the municipality or county in which the source is or is proposed to be located.
- 5) The notices will be translated for non-English speaking participants, if required.
- 6) The notices will include information for requesting accommodations for those with disabilities as listed in item 2b above.

AQB will locate an appropriate venue based on the availability to the community to access the meeting, and the specific needs of the affected community (e.g. size of community, community locations, impacts, etc.).

AQB may reschedule the meeting due to inclement weather. If rescheduled, AQB will provide as much advance notice as possible and reschedule for an appropriate time and date.

Meetings will be scheduled to make them as accessible and user-friendly as practical, considering work schedules, dinner hours and other community commitments. To the extent possible, the meeting will be held at a location that is local and convenient, and meet American with Disabilities Act (ADA) standards. In addition, whenever practical and appropriate, translators for limited-English speaking communities, or assistance for hearing-impaired individuals may be available. Information in public notices for a public meeting will adhere to AQB regulations, statutes and policies.

g. Public Comment Periods

AQB regulations require that thirty (30) days shall be provided for public and affected program comment on the draft permit.

The PIP has been reviewed and approved by the AQB Bureau Chief.

Liz Bisbey-Kuehn	Date approved
Bureau Chief	
Air Quality Bureau	

Attachments: EJSCREEN Printout



MICHELLE LUJAN GRISHAM
GOVERNOR

HOWIE C. MORALES
LT. GOVERNOR

New Mexico
ENVIRONMENT DEPARTMENT

525 Camino de los Marquez, Suite 1
Santa Fe, NM 87505-1816
Phone (505) 476-4300
Fax (505) 476-4375
www.env.nm.gov



JAMES C. KENNEY
CABINET SECRETARY

JENNIFER J. PRUETT
DEPUTY SECRETARY

Limited English Proficiency (LEP) Services Evaluation

Air Quality Bureau Air Permit Application

Version P05.09.19

Date: December 17, 2020

Applicant: Mosaic Potash Carlsbad, Inc.

Facility Name: Mosaic Potash Carlsbad, Inc.

Air Quality Permit Application Number: P039R3M1

Location: 1361 Potash Mines Road, Carlsbad, NM 88220

Latitude: 32.414722

Longitude: -103.935833

Factor 1 – Number and Proportion of LEP Individuals in the Community:

- A. Total Number that Speak English “less than very well”: 8 Proportion, %: 3
- B. Historical participation: The Bureau does not have records indicating any participation by LEP individuals or any member of the public regarding this facility.

Factor 2 – Frequency with Which LEP Individuals Come in Contact with the Program (Frequent, Occasional, Not Frequent):

There is no record of frequent or any contact with LEP individuals regarding this facility.

Factor 3 – Nature and Importance of the Activity (Moderately Important, Important, Very Important):

Important. Permits cannot be issued in accordance with 20.2.70 NMAC unless they demonstrate compliance with all state and federal regulations, including health based New Mexico and National Ambient Air Quality Standards. This requirement protects the health of the residents in the vicinity of this facility.

Bureau regulations require that final action must be taken on this permit application no later than 18 months after the application has been ruled complete.

Potash mining constitutes a significant source of revenue for the State. Permitting facilities that are demonstrated to be in compliance with state and federal regulations encourages responsible economic development for New Mexico.

Factor 4 – Resources Available to NMED and Associated Costs:

- A. Costs associated with translation: \$300
 - Costs associated with providing a translator: \$1000-3000 depending on the length of the proceeding
 - Costs associated with hosting a public hearing: \$1500-3000

Costs for a court reporter: \$2000

- B. The Department staff includes a Spanish translator and the Department has call in translator services available.

The Bureau has reviewed the above four factors: This Title V permit action is a modification that incorporates an already issued construction permit 0495M14 and does not increase pollutant emission rates and thus, no new emission impacts on the community. Given the importance of this project, the no involvement of LEP individuals or any member of the public regarding this facility in the past, and considering the current public notice already contains a paragraph in Spanish regarding how to speak with someone in the Bureau about the proposed project, the Bureau does not plan to provide additional LEP services regarding this permitting action.

The LEP Services Evaluation has been reviewed and approved by the AQB Bureau Chief.

Liz Bisbey-Kuehn
Bureau Chief
Air Quality Bureau

Date approved

Location: User-specified linear location
 Ring (buffer): 4-miles radius
 Description: Area map

Summary of ACS Estimates		2013 - 2017
Population		254
Population Density (per sq. mile)		2
Minority Population		103
% Minority		41%
Households		103
Housing Units		118
Housing Units Built Before 1950		24
Per Capita Income		33,033
Land Area (sq. miles) (Source: SF1)		136.00
% Land Area		99%
Water Area (sq. miles) (Source: SF1)		0.78
% Water Area		1%

	2013 - 2017 ACS Estimates	Percent	MOE (±)
Population by Race			
Total	254	100%	489
Population Reporting One Race	247	98%	626
White	238	94%	452
Black	0	0%	58
American Indian	8	3%	31
Asian	0	0%	12
Pacific Islander	0	0%	12
Some Other Race	1	0%	61
Population Reporting Two or More Races	6	2%	35
Total Hispanic Population	89	35%	329
Total Non-Hispanic Population	165		
White Alone	150	59%	285
Black Alone	0	0%	58
American Indian Alone	7	3%	31
Non-Hispanic Asian Alone	0	0%	12
Pacific Islander Alone	0	0%	12
Other Race Alone	0	0%	22
Two or More Races Alone	6	2%	35
Population by Sex			
Male	123	48%	238
Female	131	52%	281
Population by Age			
Age 0-4	14	6%	38
Age 0-17	49	19%	136
Age 18+	205	81%	258
Age 65+	35	14%	98

Data Note: Detail may not sum to totals due to rounding. Hispanic population can be of any race.

N/A means not available. **Source:** U.S. Census Bureau, American Community Survey (ACS) 2013 - 2017

Location: User-specified linear location
 Ring (buffer): 4-miles radius
 Description: Area map

	2013 - 2017 ACS Estimates	Percent	MOE (±)
Population 25+ by Educational Attainment			
Total	196	100%	349
Less than 9th Grade	3	2%	30
9th - 12th Grade, No Diploma	20	10%	53
High School Graduate	89	45%	168
Some College, No Degree	61	31%	158
Associate Degree	22	11%	71
Bachelor's Degree or more	23	12%	85
Population Age 5+ Years by Ability to Speak English			
Total	239	100%	477
Speak only English	184	77%	326
Non-English at Home ¹⁺²⁺³⁺⁴	55	23%	218
¹ Speak English "very well"	47	20%	213
² Speak English "well"	7	3%	20
³ Speak English "not well"	1	1%	35
⁴ Speak English "not at all"	0	0%	12
³⁺⁴ Speak English "less than well"	1	1%	35
²⁺³⁺⁴ Speak English "less than very well"	8	3%	39
Linguistically Isolated Households*			
Total	1	100%	13
Speak Spanish	1	100%	12
Speak Other Indo-European Languages	0	0%	12
Speak Asian-Pacific Island Languages	0	0%	12
Speak Other Languages	0	0%	12
Households by Household Income			
Household Income Base	103	100%	159
< \$15,000	20	20%	44
\$15,000 - \$25,000	11	11%	41
\$25,000 - \$50,000	12	11%	38
\$50,000 - \$75,000	19	19%	84
\$75,000 +	40	39%	151
Occupied Housing Units by Tenure			
Total	103	100%	159
Owner Occupied	77	75%	125
Renter Occupied	26	25%	115
Employed Population Age 16+ Years			
Total	214	100%	370
In Labor Force	123	58%	259
Civilian Unemployed in Labor Force	10	5%	87
Not In Labor Force	91	42%	159

Data Note: Detail may not sum to totals due to rounding. Hispanic population can be of anyrace.

N/A means not available. **Source:** U.S. Census Bureau, American Community Survey (ACS)

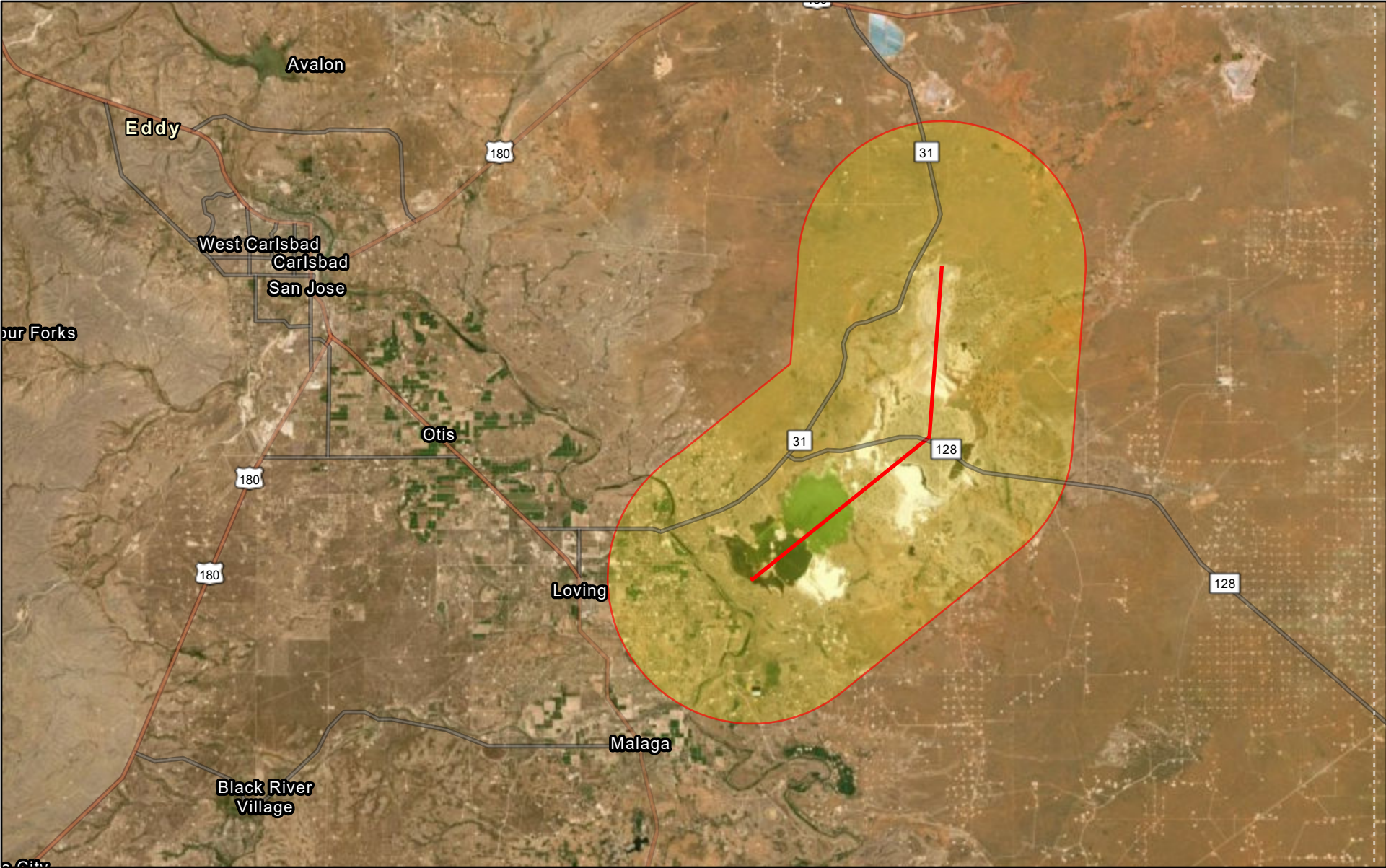
*Households in which no one 14 and over speaks English "very well" or speaks English only.

Location: User-specified linear location
 Ring (buffer): 4-miles radius
 Description: Area map



	2013 - 2017 ACS Estimates	Percent	MOE (±)
Population by Language Spoken at Home*			
Total (persons age 5 and above)	N/A	N/A	N/A
English	N/A	N/A	N/A
Spanish	N/A	N/A	N/A
French	N/A	N/A	N/A
French Creole	N/A	N/A	N/A
Italian	N/A	N/A	N/A
Portuguese	N/A	N/A	N/A
German	N/A	N/A	N/A
Yiddish	N/A	N/A	N/A
Other West Germanic	N/A	N/A	N/A
Scandinavian	N/A	N/A	N/A
Greek	N/A	N/A	N/A
Russian	N/A	N/A	N/A
Polish	N/A	N/A	N/A
Serbo-Croatian	N/A	N/A	N/A
Other Slavic	N/A	N/A	N/A
Armenian	N/A	N/A	N/A
Persian	N/A	N/A	N/A
Gujarathi	N/A	N/A	N/A
Hindi	N/A	N/A	N/A
Urdu	N/A	N/A	N/A
Other Indic	N/A	N/A	N/A
Other Indo-European	N/A	N/A	N/A
Chinese	N/A	N/A	N/A
Japanese	N/A	N/A	N/A
Korean	N/A	N/A	N/A
Mon-Khmer, Cambodian	N/A	N/A	N/A
Hmong	N/A	N/A	N/A
Thai	N/A	N/A	N/A
Laotian	N/A	N/A	N/A
Vietnamese	N/A	N/A	N/A
Other Asian	N/A	N/A	N/A
Tagalog	N/A	N/A	N/A
Other Pacific Island	N/A	N/A	N/A
Navajo	N/A	N/A	N/A
Other Native American	N/A	N/A	N/A
Hungarian	N/A	N/A	N/A
Arabic	N/A	N/A	N/A
Hebrew	N/A	N/A	N/A
African	N/A	N/A	N/A
Other and non-specified	N/A	N/A	N/A
Total Non-English	N/A	N/A	N/A

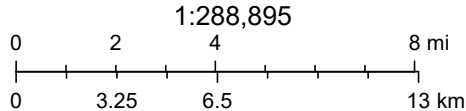
Data Note: Detail may not sum to totals due to rounding. Hispanic population can be of any race.
 N/A means not available. **Source:** U.S. Census Bureau, American Community Survey (ACS) 2013 - 2017.
 *Population by Language Spoken at Home is available at the census tract summary level and up.

Map-Mosaic2017_report-linear



July 7, 2020

-  Area map
-  EPA Tribal Areas (1 of 4): Lower 48 States



Source: Esri, Maxar, GeoEye, Earthstar Geographics, CNES/Airbus DS, USDA, USGS, AeroGRID, IGN, and the GIS User Community, Sources: Esri,