



**MICHELLE LUJAN GRISHAM**  
GOVERNOR

**HOWIE C. MORALES**  
LT. GOVERNOR

**New Mexico**  
**ENVIRONMENT DEPARTMENT**

525 Camino de los Marquez, Suite 1  
Santa Fe, NM 87505-1816  
Phone (505) 476-4300  
Fax (505) 476-4375  
www.env.nm.gov



**JAMES C. KENNEY**  
CABINET SECRETARY

**JENNIFER J. PRUETT**  
DEPUTY SECRETARY

**PUBLIC INVOLVEMENT PLAN (PIP)**  
**Air Quality Bureau Air Permit Application**

Version P8.20.19

Date: August 31, 2020, updated March 4, 2021 for Covid procedures  
Applicant: Enterprise Field Services LLC; Enterprise Products Operating LLC  
Facility Name: Chaco Gas Plant  
Air Quality Permit Application Number: P116-R3  
Location: This facility is located approximately 14 miles southwest of Bloomfield, New Mexico in San Juan County  
Latitude: 36.483333° Longitude: -108.120278°

**1. Overview of Air Quality Bureau's plan of action for addressing the community's needs and concerns for processing Air Quality Permit Applications:**

The New Mexico Environment Department (Department), Air Quality Bureau (AQB) developed this Public Involvement Plan (PIP) for the processing of air quality permit applications in accordance with the requirements at 20.2.70 NMAC for this facility. This air quality regulation does require public participation outreach throughout different stages of the permitting process. The AQB will meet the public participation requirements by following this PIP, which includes all applicable policy, regulatory and statutory public participation requirements.

In developing this PIP, community participation needs for this permitting action were assessed to ensure appropriate promotion of public outreach by identifying whether there is a combination of environmental and demographic factors (i.e., low income community, minority community, limited English proficiency individuals, Linguistically Isolated Households, etc.) that may impact public participation. This assessment identifies community outreach needs and provides for public access opportunities above and beyond statutorily mandated requirements, and underscores the provision of adequate public access to information about this permit application.

As much as possible, public participation and informational activities related to this permit application will be held within the regulatory timelines outlined below.

- a. AQB regulations at 20.2.70 NMAC require that the application must be ruled complete or incomplete no more than 60 days after receipt. The AQB will publish a public notice for

this application in a newspaper of general circulation in the area closest to the location of the facility, when the draft permit is issued for comment. See section 4.c below for more information.

The public notice contains a paragraph in Spanish directing Spanish speaking interested parties to call the AQB at (505) 476-5557 to speak to Spanish speaking staff for additional information regarding this permitting action.

- b. Normally the AQB would provide a copy of the public notice, the air quality permit application, and this PIP to the nearest NMED field office, but due to current Covid-19 access restrictions for protection of both public employees and the protection of the general public these materials are instead available on the NMED website (see section 2.a).
- c. AQB regulations require that the public notice be sent to interested parties maintained on a mailing list. See Section 4.b below for more information.
- d. AQB regulations require that the public notice be sent to the “affected programs” as defined at 20.2.70 NMAC. See Section 4.e below for more information.
- e. Public notice shall be followed by a 30-day public comment period that starts on the day that the notice is published in the newspaper. See Section 4.g below for details.
- f. AQB regulations require that the permit must be issued, issued subject to conditions, or denied within eighteen (18) months after the department deems the application administratively complete.

## **2. Contact list of AQB staff with phone numbers and email addresses:**

### **a. AQB contact for questions about this application or PIP (included in public notices and outreach materials):**

James E. Nellessen  
New Mexico Environment Department  
Air Quality Bureau  
525 Camino de los Marquez, Suite 1  
Santa Fe, New Mexico, 87505  
505-476-4315 (voicemail only, not physically present at this phone number)  
[james.nellessen@state.nm.us](mailto:james.nellessen@state.nm.us)

Electronic copies will be available at the following link, which will be included in public notices and outreach materials as appropriate: <https://www.env.nm.gov/air-quality/aqb-p-current-permitting-activites/>.

### **b. Non-English Language Speaker Assistance and Accommodations**

The AQB may hold public meetings, open houses, stakeholder meetings, and/or a formal hearing depending on the interest in the application. Language assistance services may be arranged for translation of documents for meetings, for translators during meetings and for obtaining services for persons with disabilities. A phone-based interpretation service may be available for languages other than English.

**3. Description of the community/stakeholder groups:**

To provide for adequate public participation opportunities and meaningful involvement of persons regarding this permit application and to address potential or existing environmental justice areas, the affected communities must first be identified, informed about proposed environmental actions affecting the community, and invited to share their comments and concerns. The EJSCREEN tool developed by the U.S. Environmental Protection Agency (EPA) helps identify communities that are low income and minority populations that may benefit from a variety of approaches for notification and outreach communication.

Using the default 4-mile radius from the facility, the results of the EJScreen ACS Summary Report (attached) are listed in the table below.

<b>Population and Income Data</b>			
Total Population:	240	Per capita income of community:	\$10,716
Minority Population, %:	96	US Per Capita Income*:	\$29,829
Total number of households:	66	Total Number (and Percent) of Linguistically Isolated Households:	9 (13.6%)

\*US Per Capita Income 2013-2017; <https://www.census.gov/quickfacts/fact/table/US/HSG030210>

<b>Population by Race, %</b>		<b>Population by Ability to Speak English, %</b>	
White	4	Speak Only English	40
Black	0	Non-English at Home	60
American Indian	91	Speak English "very well"	47
Asian	0	Speak English "well"	9
Pacific Islander	0	Speak English "not well"	2
Other Race	1	Speak English "not at all"	2
Two or More Races	4	Speak English "less than very well"	13

<b>Linguistically Isolated Household Details, %</b>		<b>List other Languages (if applicable)</b>
Speak Spanish	0	////////////////////////////////////
Speak Other Indo-European Languages	0	
Speak Asian Pacific Island Languages	0	
Speak Other Languages	100	

History of public involvement in air permitting during the last 10 years: For this facility, over the past 10 years the AQB has not received public comment nor has there been any participation by any community or stakeholder groups. Nevertheless, it is important for the AQB to incorporate the linguistic and communication needs of this community when conducting public outreach and participation activities. To help accomplish this, the AQB will provide information in English in public comment notices, public meeting notices (if applicable), and other announcements (radio broadcasts, brochures, signs, postcards, etc.) and strive to make public participation efforts as inclusive as possible within AQB budget and time limitations. The NMED Farmington Field Office would normally serve as access area for the AQB to leave hard copies of important documents and information about how to comment on

this permit application but due to limited office access due to Covid-19 protections for both state employees and the general public, documents will be available electronically on the NMED-AQB website (see Section 2a above).

#### **4. Detailed actions and outreach activities the AQB Permitting Section will take to reach the affected public:**

##### **a. Overview**

Based on the demographics report discussed in the PIP, the history of public involvement at the facility and the facility background, basic information about public involvement opportunities will be in English. This information will include how to request materials in Spanish or to speak with AQB staff through an interpreter. Further details about public participation for this activity are outlined below.

**The AQB maintains information regarding this air quality permit application at the following locations:**

- i. On the Air Quality Bureau website, see Section 2.a above.**

**[Due to Covid-19 restrictions materials will not be available at ii and iii below]:**

- ii. At the District Office listed in Section 1.b above.**

- iii. At the main office location:**

New Mexico Environment Department  
Air Quality Bureau  
525 Camino de los Marquez, Suite 1  
Santa Fe, New Mexico, 87505

##### **b. Postal Mailing or E-Mailing of Notices to Persons on the Facility-Specific Mailing List**

AQB regulations require notification to persons who have expressed interest in applications. The AQB maintains a mailing list that includes individuals interested in permit applications from particular facilities or geographic areas. Notifications may be sent through physical mail and/or an email.

The list also includes addresses of states, local air pollution control programs, and Indian tribes and pueblos, that are within 50 miles of the source.

##### **c. Notices in the State Newspaper and Local Newspapers**

The public notice for this permit application will be published in English in the Legal Section of the Farmington Daily Times newspaper.

Website for this publication is listed below:

Farmington Daily Times

English: <http://www.daily-times.com/>

**d. Mailing to the Governor or President of Indian Tribes, Pueblos or Nations**

AQB regulations and the evaluation of the facility location and associated demographics, require notification to Tribes, Pueblos or Nations about this permit application for facilities located within a specified distance.

Email notification will be sent to the contacts at the Tribes, Pueblos and/or Nations listed below:

Jicarilla Apache Tribe	karena_cstll@yahoo.com
Navajo Nation	airquality@navajo-nsn.gov
Southern Ute Tribe	dpowers@southernute-nsn.gov
Ute Mountain Tribe	JArchuleta@utemountain.org

The following Navajo Nation Chapter House will also be contacted via email. To be more inclusive, chapter houses within 10 miles of the facility were included.

Huerfano Chapter House: [huerfano@navajochapters.org](mailto:huerfano@navajochapters.org)

**e. Affected Local, State, or Federal Government Agencies, and Active Land Grants**

AQB regulations require identifying and notifying local, state or federal government agencies about this permit application.

The following affected Local, State, or Federal Government Agencies will be notified by email:

US EPA Region VI, Erica LeDoux: [r6airpermits@epa.gov](mailto:r6airpermits@epa.gov)

State of Colorado: [matt.burgett@state.co.us](mailto:matt.burgett@state.co.us)

**f. Public Meeting Notices, Public Comment Notices, and Other Notices**

AQB may hold public meetings, open houses, stakeholder meetings, and/or a formal hearing depending on the interest in the application. Based on historical information and the results of the initial screening, there is no public meeting planned at this time for this permit application. If it is determined that a public meeting will be required, notice will be provided to the community as follows:

- 1) Via a newspaper of general circulation in the area closest to the location of the facility.
- 2) Locations commonly frequented by the general public, such as a nearby post office, public library, or city hall.
- 3) All persons and organizations that have expressed interest and are on a list maintained by AQB.
- 4) Via a public service announcement to at least one radio or television station which serves the municipality or county in which the source is or is proposed to be located.
- 5) The notices will be translated for non-English speaking participants, if required.
- 6) The notices will include information for requesting accommodations for those with disabilities as listed in item 2b above.

AQB will locate an appropriate venue based on the availability to the community to access the meeting, and the specific needs of the affected community (e.g. size of community, community locations, impacts, etc.).

AQB may reschedule the meeting due to inclement weather. If rescheduled, AQB will provide as much advance notice as possible and reschedule for an appropriate time and date.

Meetings will be scheduled to make them as accessible and user-friendly as practical, considering work schedules, dinner hours and other community commitments. To the extent possible, the meeting will be held at a location that is local and convenient, and meet American with Disabilities Act (ADA) standards. In addition, whenever practical and appropriate, translators for limited-English speaking communities, or assistance for hearing-impaired individuals may be available. Information in public notices for a public meeting will adhere to AQB regulations, statutes and policies.

**g. Public Comment Periods**

AQB regulations require that thirty (30) days shall be provided for public and affected program comment on the draft permit.

The PIP has been reviewed and approved by the AQB Bureau Chief.

For \_\_\_\_\_  
Liz Bisbey-Kuehn  
Bureau Chief  
Air Quality Bureau

\_\_\_\_\_  
Date approved

Attachments: EJSCREEN Printout

Location: User-specified point center at 36.483333, -108.120278  
 Ring (buffer): 4-miles radius  
 Description: Chaco Gas Plant

Summary of ACS Estimates		2013 - 2017
Population		240
Population Density (per sq. mile)		5
Minority Population		231
% Minority		96%
Households		66
Housing Units		84
Housing Units Built Before 1950		0
Per Capita Income		10,716
Land Area (sq. miles) (Source: SF1)		51.59
% Land Area		100%
Water Area (sq. miles) (Source: SF1)		0.01
% Water Area		0%

	2013 - 2017 ACS Estimates	Percent	MOE (±)
<b>Population by Race</b>			
Total	240	100%	245
Population Reporting One Race	229	96%	315
White	9	4%	53
Black	0	0%	12
American Indian	219	91%	217
Asian	0	0%	12
Pacific Islander	0	0%	12
Some Other Race	1	1%	9
Population Reporting Two or More Races	11	4%	92
Total Hispanic Population	7	3%	31
Total Non-Hispanic Population	233		
White Alone	8	4%	53
Black Alone	0	0%	12
American Indian Alone	215	89%	221
Non-Hispanic Asian Alone	0	0%	12
Pacific Islander Alone	0	0%	12
Other Race Alone	0	0%	12
Two or More Races Alone	10	4%	91
<b>Population by Sex</b>			
Male	117	49%	138
Female	123	51%	136
<b>Population by Age</b>			
Age 0-4	18	8%	40
Age 0-17	79	33%	98
Age 18+	161	67%	112
Age 65+	25	11%	41

**Data Note:** Detail may not sum to totals due to rounding. Hispanic population can be of any race.

N/A means not available. **Source:** U.S. Census Bureau, American Community Survey (ACS) 2013 - 2017

Location: User-specified point center at 36.483333, -108.120278  
 Ring (buffer): 4-miles radius  
 Description: Chaco Gas Plant

	2013 - 2017 ACS Estimates	Percent	MOE (±)
<b>Population 25+ by Educational Attainment</b>			
Total	142	100%	128
Less than 9th Grade	18	13%	37
9th - 12th Grade, No Diploma	29	20%	51
High School Graduate	57	40%	69
Some College, No Degree	35	24%	52
Associate Degree	3	2%	15
Bachelor's Degree or more	4	3%	20
<b>Population Age 5+ Years by Ability to Speak English</b>			
Total	222	100%	222
Speak only English	90	40%	147
Non-English at Home <sup>1+2+3+4</sup>	132	60%	125
<sup>1</sup> Speak English "very well"	104	47%	114
<sup>2</sup> Speak English "well"	20	9%	41
<sup>3</sup> Speak English "not well"	4	2%	19
<sup>4</sup> Speak English "not at all"	4	2%	22
<sup>3+4</sup> Speak English "less than well"	9	4%	27
<sup>2+3+4</sup> Speak English "less than very well"	29	13%	48
<b>Linguistically Isolated Households*</b>			
Total	9	100%	26
Speak Spanish	0	0%	12
Speak Other Indo-European Languages	0	0%	12
Speak Asian-Pacific Island Languages	0	0%	12
Speak Other Languages	9	100%	23
<b>Households by Household Income</b>			
Household Income Base	66	100%	51
< \$15,000	24	36%	38
\$15,000 - \$25,000	9	13%	25
\$25,000 - \$50,000	15	23%	29
\$50,000 - \$75,000	11	16%	23
\$75,000 +	7	11%	28
<b>Occupied Housing Units by Tenure</b>			
Total	66	100%	51
Owner Occupied	53	80%	45
Renter Occupied	13	20%	32
<b>Employed Population Age 16+ Years</b>			
Total	174	100%	168
In Labor Force	88	51%	117
Civilian Unemployed in Labor Force	22	13%	35
Not In Labor Force	86	49%	107

**Data Note:** Detail may not sum to totals due to rounding. Hispanic population can be of anyrace.

N/A means not available. **Source:** U.S. Census Bureau, American Community Survey (ACS)

\*Households in which no one 14 and over speaks English "very well" or speaks English only.



Location: User-specified point center at 36.483333, -108.120278

Ring (buffer): 4-miles radius

Description: Chaco Gas Plant

	2013 - 2017 ACS Estimates	Percent	MOE (±)
<b>Population by Language Spoken at Home*</b>			
Total (persons age 5 and above)	N/A	N/A	N/A
English	N/A	N/A	N/A
Spanish	N/A	N/A	N/A
French	N/A	N/A	N/A
French Creole	N/A	N/A	N/A
Italian	N/A	N/A	N/A
Portuguese	N/A	N/A	N/A
German	N/A	N/A	N/A
Yiddish	N/A	N/A	N/A
Other West Germanic	N/A	N/A	N/A
Scandinavian	N/A	N/A	N/A
Greek	N/A	N/A	N/A
Russian	N/A	N/A	N/A
Polish	N/A	N/A	N/A
Serbo-Croatian	N/A	N/A	N/A
Other Slavic	N/A	N/A	N/A
Armenian	N/A	N/A	N/A
Persian	N/A	N/A	N/A
Gujarathi	N/A	N/A	N/A
Hindi	N/A	N/A	N/A
Urdu	N/A	N/A	N/A
Other Indic	N/A	N/A	N/A
Other Indo-European	N/A	N/A	N/A
Chinese	N/A	N/A	N/A
Japanese	N/A	N/A	N/A
Korean	N/A	N/A	N/A
Mon-Khmer, Cambodian	N/A	N/A	N/A
Hmong	N/A	N/A	N/A
Thai	N/A	N/A	N/A
Laotian	N/A	N/A	N/A
Vietnamese	N/A	N/A	N/A
Other Asian	N/A	N/A	N/A
Tagalog	N/A	N/A	N/A
Other Pacific Island	N/A	N/A	N/A
Navajo	N/A	N/A	N/A
Other Native American	N/A	N/A	N/A
Hungarian	N/A	N/A	N/A
Arabic	N/A	N/A	N/A
Hebrew	N/A	N/A	N/A
African	N/A	N/A	N/A
Other and non-specified	N/A	N/A	N/A
Total Non-English	N/A	N/A	N/A

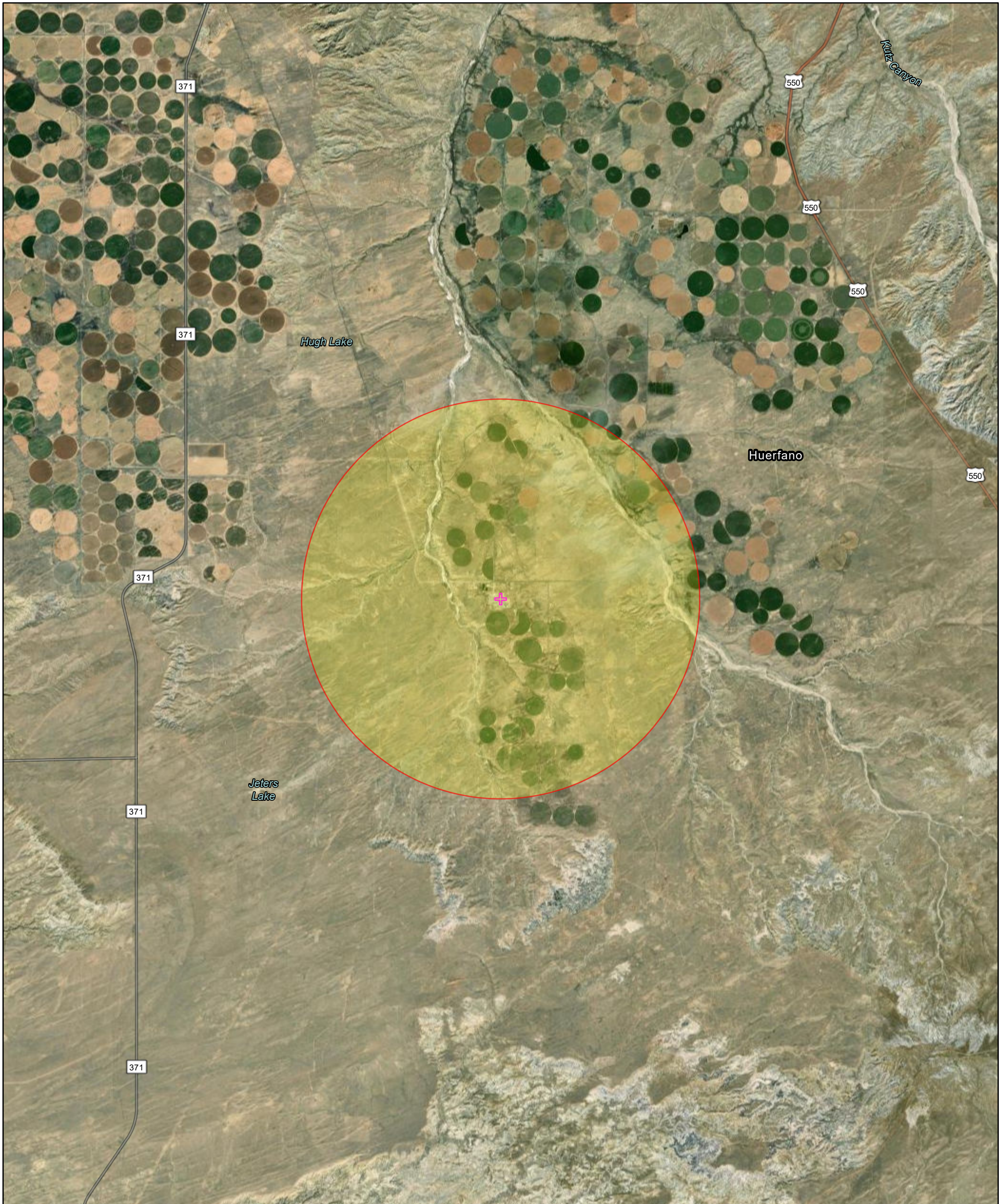
**Data Note:** Detail may not sum to totals due to rounding. Hispanic population can be of any race.

N/A means not available. **Source:** U.S. Census Bureau, American Community Survey (ACS) 2013 - 2017.

\*Population by Language Spoken at Home is available at the census tract summary level and up.



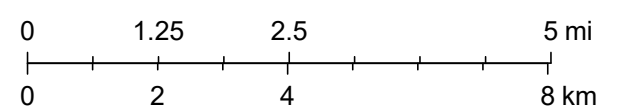
# Chaco Gas Plant PIP Map



August 31, 2020

✚ Chaco Gas Plant

1:144,448



Source: Esri, Maxar, GeoEye, Earthstar Geographics, CNES/Airbus DS, USDA, USGS, AeroGRID, IGN, and the GIS User Community, Sources: Esri, HERE, Garmin, FAO, NOAA, USGS, © OpenStreetMap contributors, and the GIS User Community