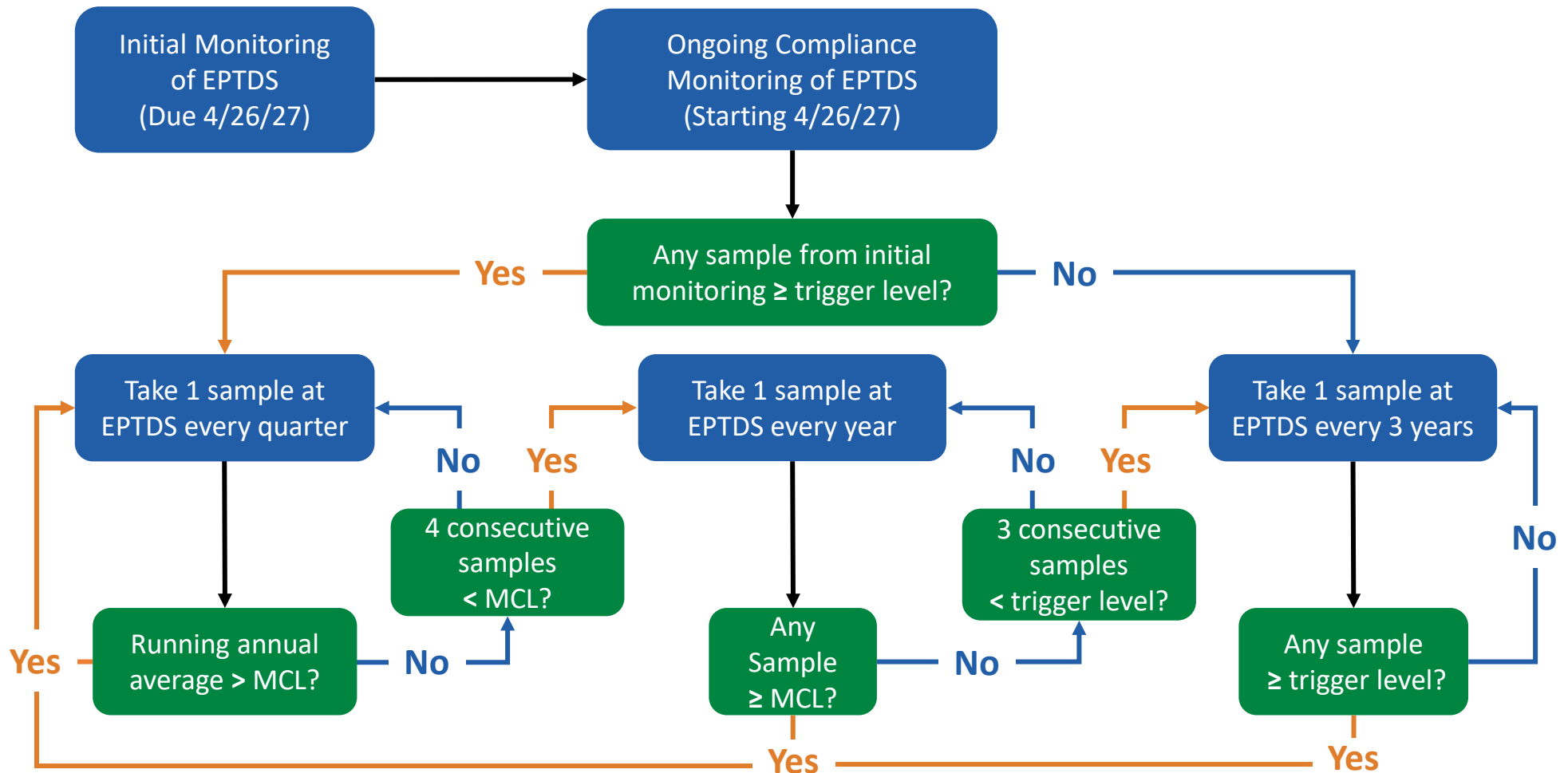




PFAS Monitoring Flow Chart



- a. EPTDS: Entry point to the distribution system.
- b. Sampling frequency is the same for all regulated PFAS compounds regardless of sampling results.
- c. If one regulated PFAS is detected above an MCL, all 6 regulated PFAS must be monitored at the enhanced frequency.
- d. Sampling frequency is specific to the EPTDS. A system with multiple EPTDS may sample each EPTDS at different frequencies as determined by EPTDS sampling results
- e. When running annual average calculations, results below the PQL should be set to zero.