



NEW MEXICO ENVIRONMENT DEPARTMENT
RADIATION CONTROL BUREAU
PUBLIC INVOLVEMENT PLAN
(PIP)



Facility Name: Mistras Group, Inc.

Facility Location: 402 Energy Ave. Unit G&H
Carlsbad, New Mexico 88220

Responsible Party: Matthew C. Kim
Mistras Group, Inc.
4000 Underwood Rd.
La Porte, TX 77571

Agency: New Mexico Environmental Department
Radiation Control Bureau

RCB Action: Licensing – Amendment

Bureau Contact: Victor Diaz, Environmental Scientist - Specialist
(505) 476-8601
Victor.Diaz@state.nm.us

Main bureau telephone number:
(505) 476-8600

EFFECTIVE DATE: TBD

REVISION DATE: N/A

DocuSigned by:

Michelle Miano

77308F7C12E74CC...
Michelle Miano, Bureau Chief
Radiation Control Bureau
New Mexico Environment Department

Element 1 – Public Involvement Plan (PIP) Overview

The New Mexico Environment Department (NMED or Department), Radiation Control Bureau (Bureau or RCB) has developed the PIP for the application for a Radioactive Material License.

The purpose of this PIP is to plan to provide public participation opportunities and information that the community may need to participate in the licensing process for this facility. This PIP identifies information about the community and resources required by the Bureau to incorporate community participation activities into the decision-making process. This PIP is developed following the Department’s *Public Participation Policy* (Policy 07-13 or Policy) and includes the requirements of the Policy, as well as applicable regulatory and statutory public participation requirements.

This PIP implements the “elements” outlined in the Policy. Those elements include:

1. An overview of the Public Involvement Plan for the community affected by the activity
2. Bureau contact names and contact information, specifically for Limited English Proficiency (LEP) language assistance services (e.g., translation, interpreters) or for disability accommodations
3. A summary of the regulatory public participation framework associated with radioactive material licenses
4. A description of community/stakeholder groups based on results of a preliminary environmental justice (EJ) screening
5. Details about planned public outreach activities

The Bureau will adhere to the public participation requirements for the licensing process by following this PIP, which includes all applicable policy, regulatory, and statutory public notice and participation requirements. The PIP identifies the Department staff and resources needed to accomplish these activities.

The notices shall include the following:

- (1) the name and address of the applicant;
- (2) the location of the proposed activity;
- (3) a brief description of the procedures to be followed by the Secretary in making a final determination;
- (4) a brief description of the proposed activity;
- (5) the time within which written comments and requests for public hearings will be accepted; and
- (6) the means by which interested persons may obtain further information;
- (7) the following sample notice satisfies these requirements:

PUBLIC NOTICE

The New Mexico Environment Department (NMED or Department) has received a license application for Radioactive Material License.

During the early part of the evaluation period, the Department will review and comment on the license application for Radioactive Material License. NMED may, at its discretion, retain consultants to assist it in its evaluation of the license application for the Radioactive Material License. NMED will forward any relevant comments and questions received from various agencies and interested parties to the applicant for its response. Correspondence associated with the license application for Radioactive Material License will be on file with the Radiation Control Bureau. It will be available for inspection by the applicant and any other interested parties (refer to Element 2 of this PIP). The Department has required the applicant to provide complete plans and other materials addressing, among other things, the public health, safety, and environmental aspects of the proposed activity. The Department will analyze the license application carefully. The review process of this application analysis is to ensure there are no deficiencies. Ensure the license application for Radioactive Material License meets all applicable requirements. There is no reason to believe the operation will violate any laws or regulations. If the Department approves the application, it will issue a Radioactive Material License to expire five years after issuance. Periodic inspections will be conducted of the activities of all licensees to ensure compliance with regulations and license conditions. The application is available for review at NMED's office of the Radiation Control Bureau in Santa Fe, New Mexico (refer to Element 2 of this PIP).

The review period will require approximately one month. Written comments and requests for a public hearing are accepted within thirty days after the publication of this notice. Direct written comments regarding this licensee's application to the Radiation Control Bureau, Environment Department, Attention of Victor Diaz, P.O. Box 5469, Santa Fe, New Mexico 87502-5469.

Community participation needs have been assessed in developing this PIP to ensure the appropriate promotion of public outreach by identifying whether there is a combination of environmental and demographic factors (i.e., low-income community, minority community, limited English proficiency individuals, linguistically isolated households) possibly impacting public participation (refer to Element 3 of this PIP). This assessment identifies community outreach needs and provides for public access opportunities above and beyond statutorily regulated requirements and underscores the provision of adequate public access to information about the licensing process.

New Mexico is a state with a 5.3% community of Spanish speakers. The Bureau will provide pertinent information in both English and Spanish in public notices and related announcements.

At any time during the licensing process, the Applicant and relevant documents may be reviewed at the repository identified in Element 2 — Bureau contact of this document.

The Chief of the Radiation Control Bureau provides the final approval of the PIP and amendments. This PIP is a “living” document able to be amended after considering public comments and feedback.

The Bureau plans to conduct the public involvement activities related to the licensing process outlined in the *Table of Public Involvement Activities* below. The activity timeline and dates are tentative and subject to change.

Table of Public Involvement Activities

Activity	Date
Application Notice Public Notice of filing an application with RCB (Notice performed by Applicant.)	September 18, 2024
Placement of a hardcopy of the PIP in the local NMED office: NMED Santa Fe 1100 St. Francis Drive Santa Fe, NM 87505 (505) 476-8600	November 4, 2024
Distribute PIP (website)	November 4, 2024

Element 2 – Bureau Contact Information

PIP Specific Contacts

The Bureau Contact for this radioactive material license is:

Victor Diaz, Environmental Scientist - Specialist
 NMED Radiation Control Bureau
 P.O. Box 5469, Santa Fe, NM 87502-5469
 (505) 476-8601
Victor.Diaz@state.nm.us

Non-English Language Speaker Assistance

All public notices will contain a statement that non-English speakers may call the Bureau contact listed above and request language assistance to learn more about this license or the licensing process. As necessary and resources allow for document translation or interpretation related to the licensing process may be arranged.

Individuals with Disabilities Assistance

All public notices will contain a statement that disabled individuals may call the Bureau contact listed above and request assistance needed to participate in activities associated with the licensing process.

The following information will be provided in public notices so hearing-impaired callers can contact the Bureau and ask questions about the activity or proceeding: Toll-free numbers are available for TDD or TTY users to access the New Mexico Relay network (for deaf or hearing-impaired callers), 1-800-659-1779; TTY users: 1-800-659-8331.

Websites

Postings of Outreach materials and notices, including links to the following website, with the Bureau's public notice and PIP information:

Radiation Control Bureau –

<https://www.env.nm.gov/rcb/public-notice-of-radioactive-material-licensing-actions/>

Element 3 – Regulatory Framework for Public Participation Related to the Licensing Process

The regulations in 20.3.3.307, 20.3.3.308, and 20.3.3.310 NMAC identify the public participation regulatory framework associated with the licensing process.

The Radiation Protection Act (NMSA 1978, § 74-3-9) and the Radiation Control Bureau (20.3.3.310 NMAC) address notice to be provided to the public regarding the submittal of a Radioactive Material facility license application. This notice is provided at the start of the licensing process and informs the public that the Bureau's review of the license application has begun. It is common practice for the Bureau to provide notice of the submittal of a license application in English and Spanish. The Bureau is required to provide notice in the following manner:

Table of Regulatory Framework for Public Involvement Activities

Activity	Dates
<p>Application Notice (PN-1) Public Notice Participation and hearing 20.3.3.310.A, B, and C NMAC – Bureau’s obligations at 20.3.3.310 NMAC</p> <ul style="list-style-type: none"> • Signs (PN-1 synopsis in English) - Applicant obligation • Mailings to owners of nearby properties - Applicant obligation • Newspaper display ads (PN-1 summary in English & Spanish)- Bureau’s responsibility • NMED website https://www.env.nm.gov/rcb/public-notices-of-radioactive-material-licensing-actions/ 	<p>Within 60 days of the Department determining the application is administratively complete.</p>
<p>License Notice (PN-2): Public comment period 20.3.3.310.E NMAC.</p> <ul style="list-style-type: none"> • NMED website https://www.env.nm.gov/rcb/public-notices-of-radioactive-material-licensing-actions/ • Newspaper legal ads • Notification of interested parties • Notice to government agencies (if required) • Notice to Indian Tribes, Pueblos, and Nations (if required) 	<p>Within 30 days of the Department determining the application is technically complete and drafting a license.</p>
<p>Public Hearing Notice (if required): Upon the Department’s determination that there is a substantial public interest in the license – obligation at 20.3.3.310.F NMAC</p> <ul style="list-style-type: none"> • NMED website https://www.env.nm.gov/rcb/public-notices-of-radioactive-material-licensing-actions/ • Newspapers • Notice to interested parties • Notice to government agencies (if required) • Notice to Indian Tribes, Pueblos, and Nations (if required) 	<p>Notice of the hearing shall occur at least 30 days before the hearing.</p>

Suitable for display, the abbreviated format of the PN-1 synopsis does not contain all the information provided by a full public notice, e.g., language assistance or non-discrimination information.

Element 4 – Description of Community/Stakeholder Groups Based on the EJSCREEN

EJSCREEN Summary

The purpose of the EJSCREEN summary is to provide adequate public participation opportunities and meaningful involvement of persons in the licensing process. The affected communities must first be identified, informed about proposed environmental actions affecting the community, and invited to share their comments and concerns. The EJSCREEN tool developed by the US Environmental Protection Agency (EPA) helps identify low-income communities, minority populations, and limited English proficiency that may benefit from various for notification and outreach communication approaches. This information is to help plan for the community’s involvement in the public process for environmental activities or actions. In addition to the EJSCREEN results, the Bureau may consider additional information such as the US Census Bureau website or NMED’s EJ Mapping Tool.

The Bureau considers the affected community to be those persons living in the State of New Mexico. The results of the EJSCREEN American Community Survey (ACS) Summary Report (attached to this PIP) are summarized in the table below.

EJSCREEN Results for the Affected Community

Total population	22,209
Total number of households	8,209
Percentage of People of Color Population	63%
Percentage Hispanic Population	57%
Percentage of the population by race	Population reporting one race: White:64% Black:3% American Indian:1% Asian:0% Pacific Islander:0% Some Other Race:12%
Total number of persons greater than the age of five who speak English “less than very well”	1,603
Percentage of persons greater than the age of five who speak English “less than very well”	8%
Total number of linguistically isolated households	589
Percentage of linguistically isolated households (Total number of linguistically isolated households ÷ total number of households X 100)	7.2%

Languages by percentage in linguistically isolated households	Spanish: 97% Other Indo-European languages: 0% Asian-Pacific Island languages: 0% Other languages: 3%
Percent linguistically isolated population, New Mexico*	5.4%
Per capita income	\$ 32,793
Per capita income, USA**	\$29,979

* U.S. Census Bureau. 2011-2015 American Community Survey 5-Year Estimates, Table S1602. Limited English Speaking Households. https://factfinder.census.gov/bkmk/table/1.0/en/ACS/15_5YR/S1602/0400000US35 (date of access: 7/26/2018). (attached to this PIP)

** U.S. Census Bureau. 2015 American Community Survey 1-Year Estimates, Table S0201. Selected Population Profile in the United States. https://factfinder.census.gov/bkmk/table/1.0/en/ACS/15_1YR/S0201/0100000US (date of access: 7/26/2018). (attached to this PIP)

The EJSCREEN results indicate that for the affected community, the proportion of the population with limited English proficiency (LEP) is significant and that the predominant non-English language is Spanish. Therefore, the Bureau has performed an LEP assessment for the community and attaches that assessment to this PIP.

Because the state of New Mexico is a community with 5.3% of persons with difficulties communicating in English, the Bureau will consider the language and communication needs of this community when conducting public outreach and participation activities as required. The Bureau will provide the same information in Spanish as in English in public comment notices, public meeting notices, and other announcements (e.g., radio broadcasts, brochures, signs, postcards) and will strive to make public participation efforts as inclusive as possible. See Element 5 for more specifics on public outreach and participation activities.

Element 5 – Detailed Actions and Outreach Activities with the Affected Public

Listed in the *Table of Regulatory Framework for Public Involvement Activities* referenced in Element 3 of this document are Public involvement activities required by statute or regulation for this licensing action.

Public Participation – Outreach Activities

The Bureau will conduct the following outreach activities during this licensing process:

- Post this PIP on the Bureau website and in the nearby NMED RCB office
- Mail or e-mail notices
- Publish newspaper notices.
- Publish notice posted on NMED website

Newspapers to be utilized in the notification process include:

- Statewide circulation: Albuquerque Journal

Local, state, and federal government agencies, tribal entities, and land grant officials have notification of the licensing process through Statewide newspaper circulation notices.

Pursuant to Policy 07-13, Indian Tribes, Pueblos, and Nations will be notified about the licensing action when the range of PIP evaluation touches tribal land through the contacts maintained by the Indian Affairs Department at the following URLs:

<https://www.iad.state.nm.us/pueblo-tribes-and-nations/apaches/>
<https://www.iad.state.nm.us/pueblo-tribes-and-nations/navajo/>
<https://www.iad.state.nm.us/pueblo-tribes-and-nations/pueblos/>

Specified in the *Table of Regulated Framework for Public Involvement Activities* are timelines and methods for submitting public comments. Final radioactive material license documents will be available from the Bureau Contact identified in Element 2 of this PIP.

Postal Mailing or E-Mailing of Notices to Persons on the Facility-Specific Mailing List

The Bureau solicits interested parties' names and contact information with all public notices. The Bureau maintains those names when provided by interested parties on a Facility-Specific Mailing List and provides the individuals with information about regulatory activities for the facility. Individuals, organizations, and other interested parties are added to the mailing list as requested. All public notices will contain a statement directing interested individuals to contact the Bureau Contact for this license to be added to the facility-specific mailing list.

Other means of outreach, such as fliers announcing public comment periods, or public meetings, or hearings, maybe in locations throughout the community (e.g., local businesses, schools, libraries) and on the Department's website, at the Bureau's discretion after consideration of public interest and input.

PIP Contingency Plan

During a public health emergency or other unforeseen events outside the control of the Department, the Department will make every effort to ensure the public remains involved in and informed of the decision-making and license processes. This PIP Contingency Plan addresses circumstances when public spaces are closed because of potential human exposure risks. The Department will attempt to identify and utilize alternate methods of document delivery to the public and public viewing when conventional methods and locations are unavailable. When using the physical PIP and document repositories is unsafe, the Department will consider utilizing electronic delivery methods deemed appropriate for the licensing action. While operating under the PIP Contingency Plan, the PN-2 will include a statement specifying that the

PIP Contingency Plan is in effect and that “instead of placing a copy of the PIP for this licensing action in a public location, NMED will make the PIP available to the community by sending the PIP by email or US mail to any community member requesting a copy. An individual may request a copy of the PIP utilizing the Bureau's contact information in this public notice. Please specify how you would like the document delivered when making such a request. If you request a copy of a PIP, you will receive a revised PIP should the PIP be updated in the future.” During the times of potential human exposure risks and the resultant implementation of this PIP Contingency Plan, public meetings and hearings will only be held when or through means by which the Department can ensure the public’s health and safety and this PIP can be fully followed.

Attachments

- LEP Assessment
- A copy of the EJSCREEN ACS Summary Report and a map showing the subject area

Limited English Proficiency (LEP) Assessment

Facility: Mistras Group, Inc.

Factor 1: The Number and Proportion of LEP Individuals Eligible to be Served or Likely to be Encountered in the Community of Concern

See Public Involvement Plan (PIP), Table of EJSCREEN Results for the Affected Community.

Conclusions:

1. The number of LEP individuals (persons over the age of 5 who speak English “less than very well” in the affected community) is 1,603.
2. The percentage of LEP individuals in the affected community is 8%.
3. The percentage of linguistically isolated households is 7.2%, slightly more than the statewide average.
4. Spanish is the predominant non-English language spoken by LEP persons.
5. Historical participation: This licensing application is new, so the Bureau does not have a historical record. No one has yet requested placement on a facility-specific mailing list.

Factor 2: Frequency with which LEP Individuals Might Come in Contact with the Program

Contact with the radioactive material licensing process primarily occurs when a license application is under review. The RCB provides notice to the public and encourages participation. Individuals may participate by requesting information, submitting comments on draft licenses, requesting hearings, and participating in hearings. Most licenses do not generate public interest, and participation is low for most licenses. A summary of historical participation in licensing activities for this facility is under Factor 1. Based on the processing of license applications from December 2003 to the current application, no public hearings have been held as specified pursuant to 20.3.3.310 NMAC.

Conclusion:

LEP participation and overall public interest in this facility are limited historically. Based on this record, the Bureau considers the potential for LEP contact with the licensing process to be “infrequent.”

Factor 3: Nature and Importance of the Activity or Service Provided by the Program

The RCB deems the licensing activity “important” to NMED, the impacted community, and the State of New Mexico. The licensing activity (as required by 20.3.3 and 20.3.3.310 NMAC) is essential to NMED because the license establishes site-specific requirements that must be met to protect public health and safety and provides a means to enforce those requirements. The licensing activity is vital to the impacted community because poorly-regulated radioactive material facilities have the potential to pose a public nuisance and adversely affect the quality of

life of people living in the vicinity of the facility. The licensing activity is important to the State of New Mexico because establishing valid licenses ensures that radioactive materials will not impact the State's workers, the public, and the environment. Waste disposal and decommissioning are conducted safely and consistently by 20.3 NMAC regulations throughout the State.

Conclusion:

The RCB considers the licensing activity “important” to NMED, the state as a whole, and the impacted community.

Factor 4: Resources Available to NMED for LEP Services and Associated Costs

For outreach to LEP communities associated with this license action, NMED employs an in-house Spanish translator/interpreter and utilizes a phone interpretation service to assist during direct communication between LEP individuals and NMED staff in many other languages. Incorporated into the Bureau’s budget are the costs of newspaper publication of public notice in Spanish and interpretive services for a public meeting or hearing to the extent possible. Fees collected from the licensee by the schedule in 20.3.16 NMAC are limited and may be sufficient to cover these costs.

Conclusion:

The Bureau may accommodate the costs of the LEP services identified in this plan but is limited to one outreach per year, reviewing budgetary implications if additional services are requested.

LEP Services Plan:

To accommodate the needs of the LEP individuals who may be interested in this licensing process, the Bureau plans to:

1. Translate the Public Notice Two (PN-2) and any subsequent public notices into Spanish and publish them in a paper serving the local community.
2. Provide interpretive services at any public meeting or public hearing if requested.
3. Interact with members of the LEP community using certified interpreters when needed and feasible.

The Bureau will consider requests from members of the affected community for additional LEP services.



EJSCREEN ACS Summary Report



Location: User-specified point center at 32.370792, -104.228995

Ring (buffer): 4-miles radius

Description: Mistras Group

Summary of ACS Estimates		2018 - 2022	
Population		22,209	
Population Density (per sq. mile)		525	
People of Color Population		13,925	
% People of Color Population		63%	
Households		8,209	
Housing Units		9,449	
Housing Units Built Before 1950		1,342	
Per Capita Income		32,793	
Land Area (sq. miles) (Source: SF1)		42.32	
% Land Area		99%	
Water Area (sq. miles) (Source: SF1)		0.24	
% Water Area		1%	
		2018 - 2022 ACS Estimates	Percent MOE (±)
Population by Race			
Total		22,209	100% 909
Population Reporting One Race		17,893	81% 1,828
White		14,190	64% 844
Black		673	3% 183
American Indian		327	1% 233
Asian		37	0% 48
Pacific Islander		0	0% 13
Some Other Race		2,665	12% 507
Population Reporting Two or More Races		4,317	19% 598
Total Hispanic Population		12,621	57% 871
Total Non-Hispanic Population		9,588	
White Alone		8,285	37% 616
Black Alone		575	3% 183
American Indian Alone		197	1% 69
Non-Hispanic Asian Alone		37	0% 48
Pacific Islander Alone		0	0% 13
Other Race Alone		281	1% 333
Two or More Races Alone		212	1% 123
Population by Sex			
Male		11,151	50% 520
Female		11,058	50% 675
Population by Age			
Age 0-4		1,605	7% 263
Age 0-17		5,246	24% 354
Age 18+		16,963	76% 539
Age 65+		3,558	16% 198

Data Note: Detail may not sum to totals due to rounding. Hispanic population can be of any race.

N/A means not available. **Source:** U.S. Census Bureau, American Community Survey (ACS) 2018 - 2022



EJSCREEN ACS Summary Report



Location: User-specified point center at 32.370792, -104.228995

Ring (buffer): 4-miles radius

Description: Mistras Group

	2018 - 2022 ACS Estimates	Percent	MOE (±)
Population 25+ by Educational Attainment			
Total	14,551	100%	477
Less than 9th Grade	1,025	7%	172
9th - 12th Grade, No Diploma	1,739	12%	242
High School Graduate	4,735	33%	276
Some College, No Degree	3,989	27%	272
Associate Degree	1,393	10%	260
Bachelor's Degree or more	1,671	11%	210
Population Age 5+ Years by Ability to Speak English			
Total	20,604	100%	791
Speak only English	15,017	73%	716
Non-English at Home ¹⁺²⁺³⁺⁴	5,587	27%	396
¹ Speak English "very well"	3,984	19%	347
² Speak English "well"	880	4%	260
³ Speak English "not well"	559	3%	134
⁴ Speak English "not at all"	164	1%	142
³⁺⁴ Speak English "less than well"	723	4%	162
²⁺³⁺⁴ Speak English "less than very well"	1,603	8%	296
Limited English Speaking Households*			
Total	589	100%	129
Speak Spanish	573	97%	127
Speak Other Indo-European Languages	0	0%	13
Speak Asian-Pacific Island Languages	0	0%	13
Speak Other Languages	16	3%	25
Households by Household Income			
Household Income Base	8,209	100%	267
< \$15,000	918	11%	143
\$15,000 - \$25,000	767	9%	186
\$25,000 - \$50,000	1,381	17%	191
\$50,000 - \$75,000	1,107	13%	164
\$75,000 +	4,036	49%	279
Occupied Housing Units by Tenure			
Total	8,209	100%	267
Owner Occupied	6,145	75%	267
Renter Occupied	2,064	25%	175
Employed Population Age 16+ Years			
Total	17,546	100%	659
In Labor Force	10,598	60%	623
Civilian Unemployed in Labor Force	343	3%	94
Not In Labor Force	6,948	40%	294

Data Note: Detail may not sum to totals due to rounding. Hispanic population can be of anyrace.

N/A means not available. **Source:** U.S. Census Bureau, American Community Survey (ACS)

*Households in which no one 14 and over speaks English "very well" or speaks English only.



EJSCREEN ACS Summary Report



Location: User-specified point center at 32.370792, -104.228995
Ring (buffer): 4-miles radius
Description: Mistras Group

	2018 - 2022 ACS Estimates	Percent	MOE (±)
Population by Language Spoken at Home*			
Total (persons age 5 and above)	19,832	100%	958
English	15,024	76%	985
Spanish	4,722	24%	595
French, Haitian, or Cajun	3	0%	19
German or other West Germanic	0	0%	19
Russian, Polish, or Other Slavic	0	0%	19
Other Indo-European	0	0%	19
Korean	0	0%	19
Chinese (including Mandarin, Cantonese)	2	0%	21
Vietnamese	0	0%	19
Tagalog (including Filipino)	20	0%	67
Other Asian and Pacific Island	0	0%	19
Arabic	0	0%	19
Other and Unspecified	61	0%	58
Total Non-English	4,808	24%	1,374

Data Note: Detail may not sum to totals due to rounding. Hispanic population can be of any race.
N/A means not available. **Source:** U.S. Census Bureau, American Community Survey (ACS) 2018 - 2022.
*Population by Language Spoken at Home is available at the census tract summary level and up.



EJScreen Community Report

This report provides environmental and socioeconomic information for user-defined areas, and combines that data into environmental justice and supplemental indexes.

Mistras Group

4 miles Ring Centered at 32.370792,-104.228995

Population: 22,209

Area in square miles: 50.26

November 1, 2024

 Mistras Group

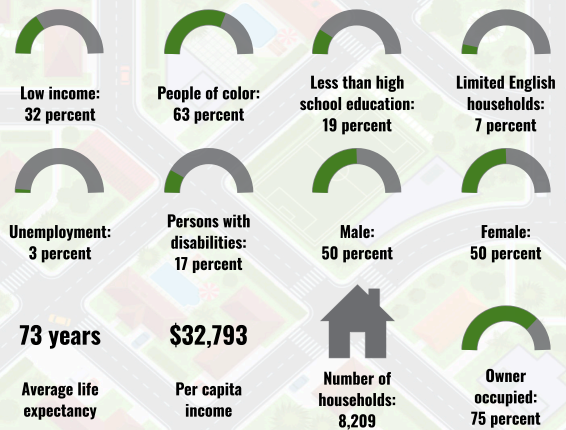
1.72,224

0 0.75 1.5 3 mi

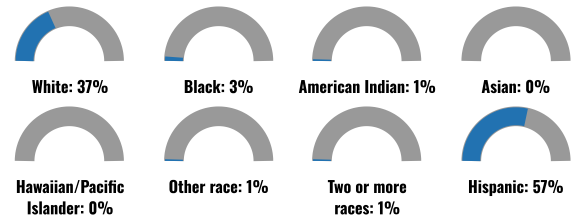
0 1.25 2.5 5 km

Bureau of Land Management, Texas Parks & Wildlife, HERE, Garmin, GeoTechnologies, Inc., USGS, EPA, Esri, HERE

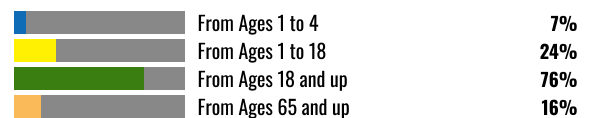
COMMUNITY INFORMATION



BREAKDOWN BY RACE



BREAKDOWN BY AGE



LIMITED ENGLISH SPEAKING BREAKDOWN



Notes: Numbers may not sum to totals due to rounding. Hispanic population can be of any race. Source: U.S. Census Bureau, American Community Survey (ACS) 2018-2022. Life expectancy data comes from the Centers for Disease Control.

LANGUAGES SPOKEN AT HOME

LANGUAGE	PERCENT
English	76%
Spanish	24%
Total Non-English	24%

Report for 4 miles Ring Centered at 32.370792,-104.228995

Report produced November 1, 2024 using EJScreen Version 2.3

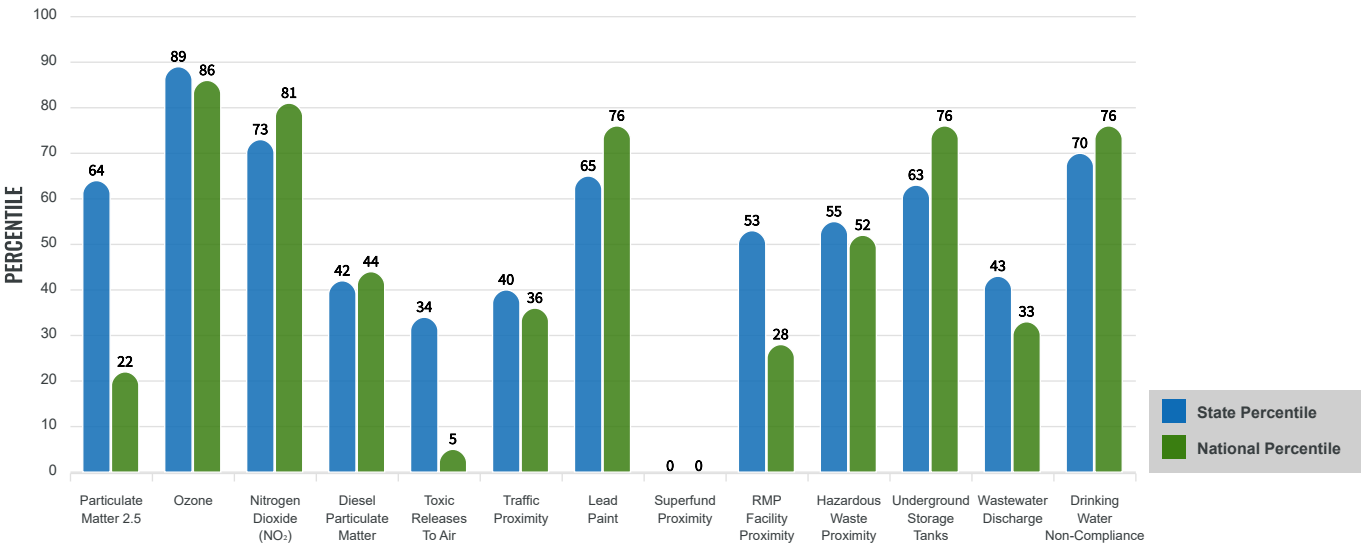
Environmental Justice & Supplemental Indexes

The environmental justice and supplemental indexes are a combination of environmental and socioeconomic information. There are thirteen EJ indexes and supplemental indexes in EJScreen reflecting the 13 environmental indicators. The indexes for a selected area are compared to those for all other locations in the state or nation. For more information and calculation details on the EJ and supplemental indexes, please visit the [EJScreen website](#).

EJ INDEXES

The EJ indexes help users screen for potential EJ concerns. To do this, the EJ index combines data on low income and people of color populations with a single environmental indicator.

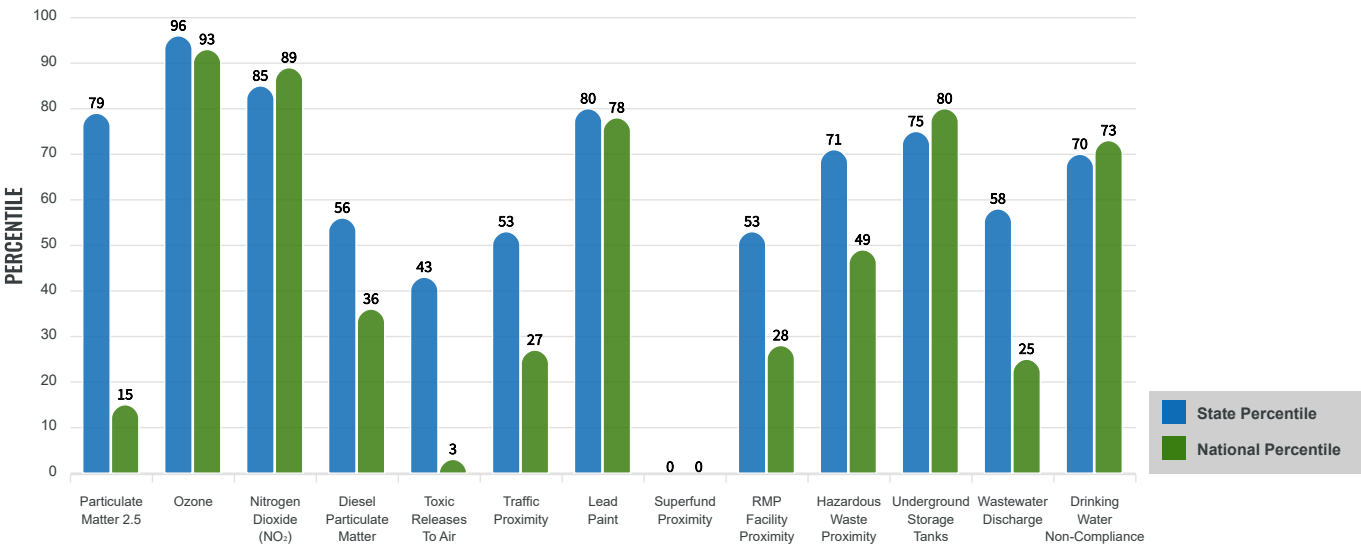
EJ INDEXES FOR THE SELECTED LOCATION



SUPPLEMENTAL INDEXES

The supplemental indexes offer a different perspective on community-level vulnerability. They combine data on percent low income, percent persons with disabilities, percent less than high school education, percent limited English speaking, and percent low life expectancy with a single environmental indicator.

SUPPLEMENTAL INDEXES FOR THE SELECTED LOCATION



Report for 4 miles Ring Centered at 32.370792,-104.228995
Report produced November 1, 2024 using EJScreen Version 2.3

EJScreen Environmental and Socioeconomic Indicators Data

SELECTED VARIABLES	VALUE	STATE AVERAGE	PERCENTILE IN STATE	USA AVERAGE	PERCENTILE IN USA
ENVIRONMENTAL BURDEN INDICATORS					
Particulate Matter 2.5 (µg/m³)	6.37	6.11	61	8.45	9
Ozone (ppb)	69.5	65.3	98	61.8	85
Nitrogen Dioxide (NO₂) (ppbv)	11	8.1	76	7.8	79
Diesel Particulate Matter (µg/m³)	0.0818	0.187	39	0.191	21
Toxic Releases to Air (toxicity-weighted concentration)	0.31	29	39	4,600	3
Traffic Proximity (daily traffic count/distance to road)	99,000	730,000	37	1,700,000	17
Lead Paint (% Pre-1960 Housing)	0.35	0.19	78	0.3	63
Superfund Proximity (site count/km distance)	0	0.34	0	0.39	0
RMP Facility Proximity (facility count/km distance)	0.019	0.2	53	0.57	28
Hazardous Waste Proximity (facility count/km distance)	0.44	1.2	52	3.5	32
Underground Storage Tanks (count/km²)	5.9	2.8	86	3.6	82
Wastewater Discharge (toxicity-weighted concentration/m distance)	0.16	990000	39	700000	16
Drinking Water Non-Compliance (points)	2.1	5.6	83	2.2	87
SOCIOECONOMIC INDICATORS					
Demographic Index USA	1.74	N/A	N/A	1.34	71
Supplemental Demographic Index USA	2.21	N/A	N/A	1.64	81
Demographic Index State	2	2.16	44	N/A	N/A
Supplemental Demographic Index State	1.98	1.62	71	N/A	N/A
People of Color	63%	62%	48	40%	73
Low Income	32%	39%	38	30%	58
Unemployment Rate	3%	6%	44	6%	47
Limited English Speaking Households	7%	6%	72	5%	80
Less Than High School Education	19%	14%	72	11%	80
Under Age 5	7%	5%	74	5%	72
Over Age 64	16%	20%	44	18%	50

*Diesel particulate matter index is from the EPA's Air Toxics Data Update, which is the Agency's ongoing, comprehensive evaluation of air toxics in the United States. This effort aims to prioritize air toxics, emission sources, and locations of interest for further study. It is important to remember that the air toxics data presented here provide broad estimates of health risks over geographic areas of the country, not definitive risks to specific individuals or locations. More information on the Air Toxics Data Update can be found at: <https://www.epa.gov/haps/air-toxics-data-update>.

Sites reporting to EPA within defined area:

Superfund	0
Hazardous Waste, Treatment, Storage, and Disposal Facilities	1
Water Dischargers	95
Air Pollution	43
Brownfields	0
Toxic Release Inventory	3

Other community features within defined area:

Schools	7
Hospitals	1
Places of Worship	11

Other environmental data:

Air Non-attainment	No
Impaired Waters	Yes

Selected location contains American Indian Reservation Lands*	No
Selected location contains a "Justice40 (CEJST)" disadvantaged community	Yes
Selected location contains an EPA IRA disadvantaged community	Yes

Report for 4 miles Ring Centered at 32.370792,-104.228995
Report produced November 1, 2024 using EJScreen Version 2.3

EJScreen Environmental and Socioeconomic Indicators Data

HEALTH INDICATORS					
INDICATOR	VALUE	STATE AVERAGE	STATE PERCENTILE	US AVERAGE	US PERCENTILE
Low Life Expectancy	25%	19%	95	20%	91
Heart Disease	6.1	5.9	53	5.8	58
Asthma	10.5	11.2	35	10.3	61
Cancer	6.2	6.1	53	6.4	42
Persons with Disabilities	17%	17.1%	55	13.7%	74

CLIMATE INDICATORS					
INDICATOR	VALUE	STATE AVERAGE	STATE PERCENTILE	US AVERAGE	US PERCENTILE
Flood Risk	13%	9%	78	12%	75
Wildfire Risk	87%	58%	52	14%	90

CRITICAL SERVICE GAPS					
INDICATOR	VALUE	STATE AVERAGE	STATE PERCENTILE	US AVERAGE	US PERCENTILE
Broadband Internet	20%	20%	58	13%	78
Lack of Health Insurance	9%	10%	55	9%	62
Housing Burden	No	N/A	N/A	N/A	N/A
Transportation Access Burden	Yes	N/A	N/A	N/A	N/A
Food Desert	Yes	N/A	N/A	N/A	N/A

Report for 4 miles Ring Centered at 32.370792,-104.228995

Report produced November 1, 2024 using EJScreen Version 2.3