



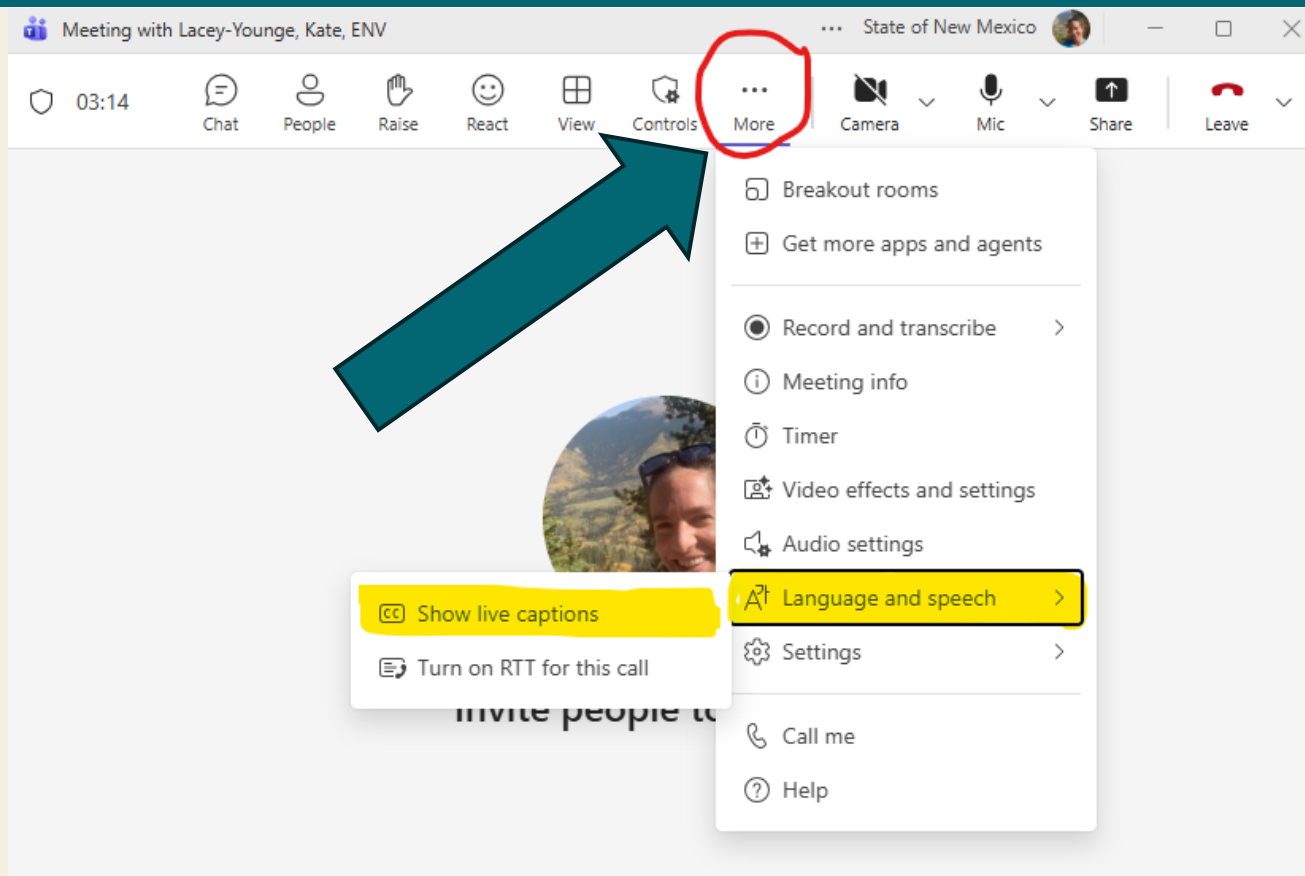
New Mexico Nonpoint Source Program Workshop 2025

Kate Lacey-Young
Watershed Protection Section Program Manager
Surface Water Quality Bureau
November 18, 2025





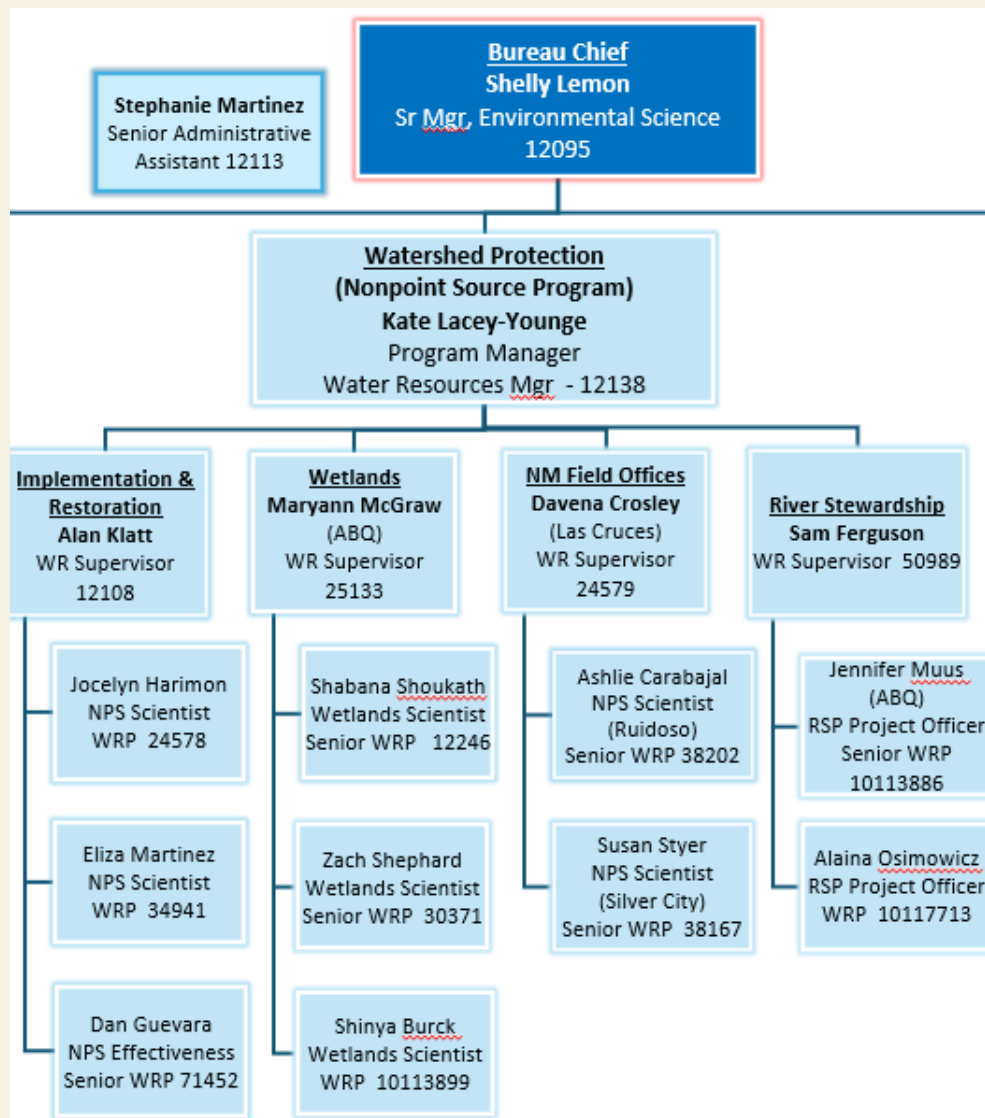
Closed Captioning



- ❑ To turn on live captions for this meeting, select “More” from the menu at the top of the Teams meeting, then “Language and Speech” and “Show live captions”
- ❑ Please sign into the chat with your name and organization.



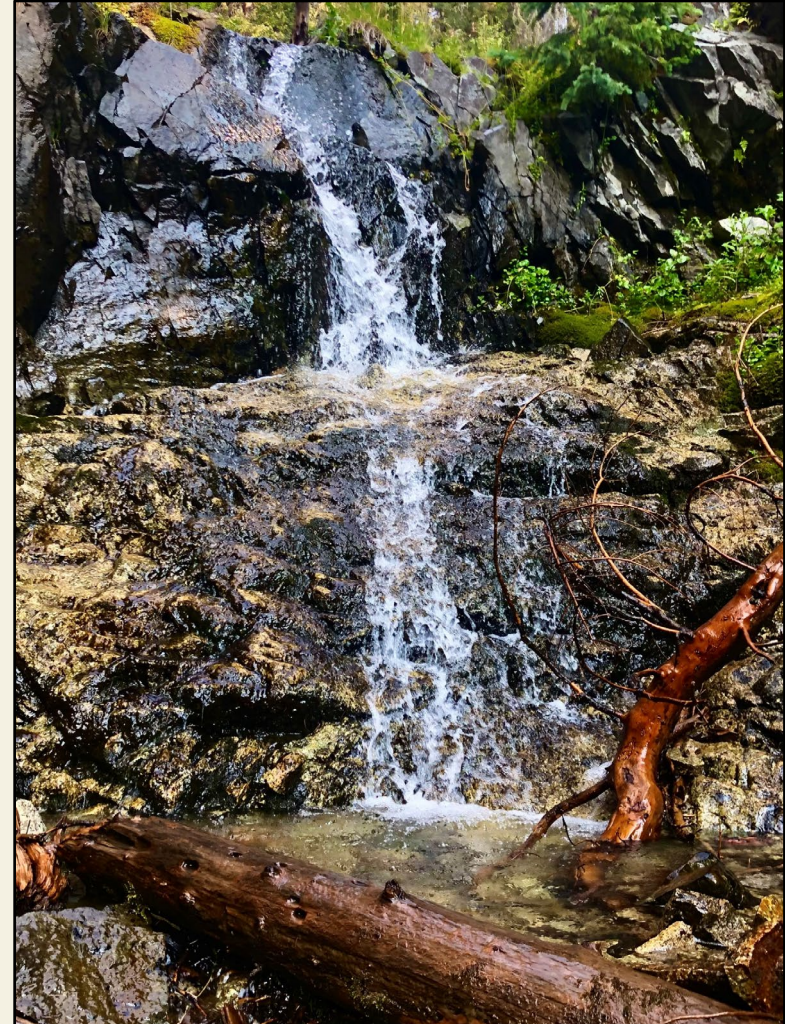
Watershed Protection Section





WPS Active Projects

- Clean Water Act Section 319
 - ▣ 2 - Planning Projects – Ruidoso and San Juan WBPs;
 - Escudilla WRAP to WBP and an Advance Restoration Plan with TMDL Team are internal projects
 - ▣ 7 - Watershed Implementation Projects
- River Stewardship
 - ▣ 21 - Implementation Projects
- Wetlands
 - ▣ 5 - Implementation, Methods and Database Development
 - ▣ 3 – Wetland Action Plan Development
 - ▣ 2 – Wetlands Mapping
- WPS TOTAL PROJECTS: 43



Italianos Falls, Taos, NM



Funding Opportunities

- **Section 319 Watershed Based Planning Request for Proposals (RFP)**
 - ▣ Released October 17, 2025, closing December 18, 2025
 - ▣ Approximately \$500,000 available
 - ▣ Dropped the match requirement to 10%
- **River Stewardship Program RFP**
 - ▣ 2025 RFP closed May 20, 2025
 - ▣ Next RFP coming February 2026
- **Watershed Protection Assistance Program**
 - ▣ Twice yearly applications
 - ▣ Up to \$75,000



Brazos Cliffs, NM



River Stewardship Program



Rio Grande Gorge, near Taos, NM

□ RFP Updates

- Changes coming – likely to have application form for technical and cost proposals
- Priority locations for restoration work based on Clean Water Act Section 319 Implementation Areas
 - Areas that have EPA-approved Watershed-Based Plan or Alternative Watershed-Based Plan



This map of New Mexico displays the geographic distribution of 12 bird species. The species are represented by colored outlines: red, orange, yellow, green, blue, and purple. The map includes major cities such as Albuquerque, Santa Fe, Las Cruces, and El Paso, as well as major highways like I-40, I-25, and I-10. A scale bar at the bottom indicates distances up to 60 miles.

7



Reimbursement Updates

- Proofs of payment have changed!
 - ▣ No longer need:
 - Paystubs
 - Copies of checks
 - ▣ Still need:
 - Invoices from subcontractors
 - Receipts for supplies
- Slight updates to the reimbursement packet





New Workshop

- “How to be Competitive for NMED SWQB Watershed Protection Section Funding Opportunities”
 - ▣ January 13, 2025
 - ▣ 9:00 am to 11:00 am
 - ▣ Virtual
 - ▣ Announcement will come through GovDelivery





Subscribe to SWQB!



Surface Water Quality Bureau

[Surface Water Quality Bureau Home](#)

[Monitoring, Assessment and Standards](#)

[Point Source Regulation](#)

[Watershed Protection](#)

The Surface Water Quality Bureau preserves, protects, and improves New Mexico's surface water quality for present and future generations.

This is accomplished through three bureau sections:

- **Monitoring, Assessment, and Standards Section** – Tasked with collecting surface water quality data, development of surface water quality standards, performing water quality assessments (ie: 303(d) List), and TMDL development.
- **Point Source Regulation Section** – Tasked with implementing ground and surface water protection regulations related to point source pollution permitting (NPDES) and spill reporting.
- **Watershed Protection Section** – Tasked with protecting watersheds from other forms of pollution (nonpoint source) through overseeing and [funding](#) watershed improvement projects.
- **SPECIAL TOPICS:**
 - [Surface Water Quality State Permitting Program](#)
 - [NMED-SWQB ArcGIS StoryMaps](#)
 - [Wildfire Impacts on Surface Water Quality](#)
 - [Watershed Protection Section Funding Opportunities](#)



**50th Anniversary
of the
Clean Water Act**

[Click here to subscribe to receive email updates!](#)



Contact us

Ph: 505-827-0187 Find a list of Surface Water Quality staff contacts [here](#).

Stay up-to-date on
our programs and
funding
opportunities.
Sign up to receive
emails!

<https://www.env.nm.gov/surface-water-quality/>



Questions?

Kate Lacey-Young
Watershed Protection Section Program Manager
kathryn.lacey@env.nm.gov
(505) 946-8863



Statewide Price Agreement #40-00000-23-00037





RAWR Price Agreement

- Riparian, Aquatic, and Wetland Restoration Services Statewide Price Agreement ([#40-00000-23-00037](#))
 - Expedited method of procurement for projects and services
 - 39 vendors – 70 services
 - Includes services in the following categories:
 - Mechanical Treatments
 - Tree cutting, mastication, skidding, tree extraction, seeding, mulching, planting, rock dam building, road drainage maintenance, trash removal, and fencing, etc.
 - Manual Treatments
 - Tree removal, planting, seeding, herbicide, construction of erosion structures, fencing, and trash removal, etc.
 - Professional Services
 - Engineering design and survey, watershed assessment, biological and archaeological surveys, mapping and data analysis, permitting, and drone surveys.
 - Monitoring Services
 - Piezometer installation and monitoring, water quality sampling and monitoring, geomorph surveys, physical habitat monitoring, and wetlands rapid assessment method data collection



Budget Spreadsheet Tool

SWPA Budget Estimator Workbook Instructions

Important:

- This workbook includes 5 sheets to streamline the budgeting process for awarding contracts under Statewide Price Agreement #40-00000-23-00037 for NMED SWQB
- Follow the guidance below to ensure data populates correctly and reflects all project expenses.

Workbook Structure:

1. Sheet 1: Budget Sheet

Data Entry Notes:

Federal Contribution Entry

1. Primary sheet for entering project budget line items.
2. Manually enter: Main task name (Column A), Item/Service from drop down list (Column B), PA (Price Agreement) Item? (Y/N) (Column E), Quantity (Column F), and PA Rate per Unit (Column G).
3. Category will auto-populate based on PA item, If the auto-filled category does not accurately reflect your selected item, select the Category in the Column D cell and the auto populated category will override accordingly.
If the auto populated category is correct, leave the manual entry category from the Column D empty.
4. For non-PA items, use the rows labeled "Other" to enter the item description, and manually select the appropriate category in Column D from drop downs.

Match Contribution Entry

5. For match, select Match in Items/Services from drop down list in Column B, manually select the category for the match from Column D, Match is not a PA item so select No in Column E and then enter the total amount in Column I.

Other Entries

6. Manually enter the NM GRT in the highlighted cell under Rate, Column G.
7. The Requested Funds (Column H) and Total Budget (Column J) auto-calculate.
8. Delete unused rows.

2. Sheet 2: Cost Summary By Category

- No manual data entry required.
- Summarizes NMED (Federal) Cost, Match, and Total Budget from all entries by Categories based on entries on the Budget Sheet.

3. Sheet 3: Rate Schedules

- Manual data entry required.

4. Sheet 4: PA Item List (Reference Only)

- Contains approved Price Agreement Items with defined Category
- Used to auto-populate Category (Column C) in Budget Sheet. **Do not modify.**



Budget Spreadsheet Tool

Task Name	Items/Services	Category-Auto-populated Entry	Category-Manual Entry	PA Item?	Quantity	PA Unit Rate	Requested Funds	Cash or In-Kind Match	Total Budget	Entity (Organization name performing the services)
Task 1	Item Number and Description	Category		Y			\$ -		\$ -	
	Item Number and Description	Category		Y			\$ -		\$ -	
	Item Number and Description	Category		Y			\$ -		\$ -	
	Item Number and Description	Category		Y			\$ -		\$ -	
	Item Number and Description	Category		Y			\$ -		\$ -	
	Item Number and Description	Category		Y			\$ -		\$ -	
	Item Number and Description	Category		Y			\$ -		\$ -	
	Item Number and Description	Category		Y			\$ -		\$ -	
	Other			N			\$ -		\$ -	
	Other			N			\$ -		\$ -	
	Other			N			\$ -		\$ -	
	Other			N			\$ -		\$ -	
Task 2	Item Number and Description	Category		Y			\$ -		\$ -	
	Item Number and Description	Category		Y			\$ -		\$ -	
	Item Number and Description	Category		Y			\$ -		\$ -	
	Item Number and Description	Category		Y			\$ -		\$ -	
	Item Number and Description	Category		Y			\$ -		\$ -	
	Item Number and Description	Category		Y			\$ -		\$ -	
	Item Number and Description	Category		Y			\$ -		\$ -	
	Item Number and Description	Category		Y			\$ -		\$ -	
	Other			N			\$ -		\$ -	
	Other			N			\$ -		\$ -	
	Other			N			\$ -		\$ -	
	Other			N			\$ -		\$ -	
Task 3	Item Number and Description	Category		Y			\$ -		\$ -	
	Estimated GRT (location 1) Tax	Tax		N			\$ -		\$ -	
	Estimated GRT (location 2) Tax	Tax		N			\$ -		\$ -	
	Estimated GRT (location 3) Tax	Tax		N			\$ -		\$ -	
TOTAL							\$ -	\$ -	\$ -	



Budget Spreadsheet Tool

Category ▼	Requested Fund ▼	Cash or In-Kind Match ▼	Total Amount ▼
PERSONNEL	\$ -	\$ -	\$ -
EQUIPMENT	\$ -	\$ -	\$ -
TRAVEL	\$ -	\$ -	\$ -
SUPPLIES	\$ -	\$ -	\$ -
SUB CONTRACTUAL	\$ -	\$ -	\$ -
OTHER	\$ -	\$ -	\$ -
NMGRT on Labor (Alb 7.625%)	\$ -	\$ -	\$ -
Total Project	\$ -	\$ -	\$ -
No Manual Entry Required			

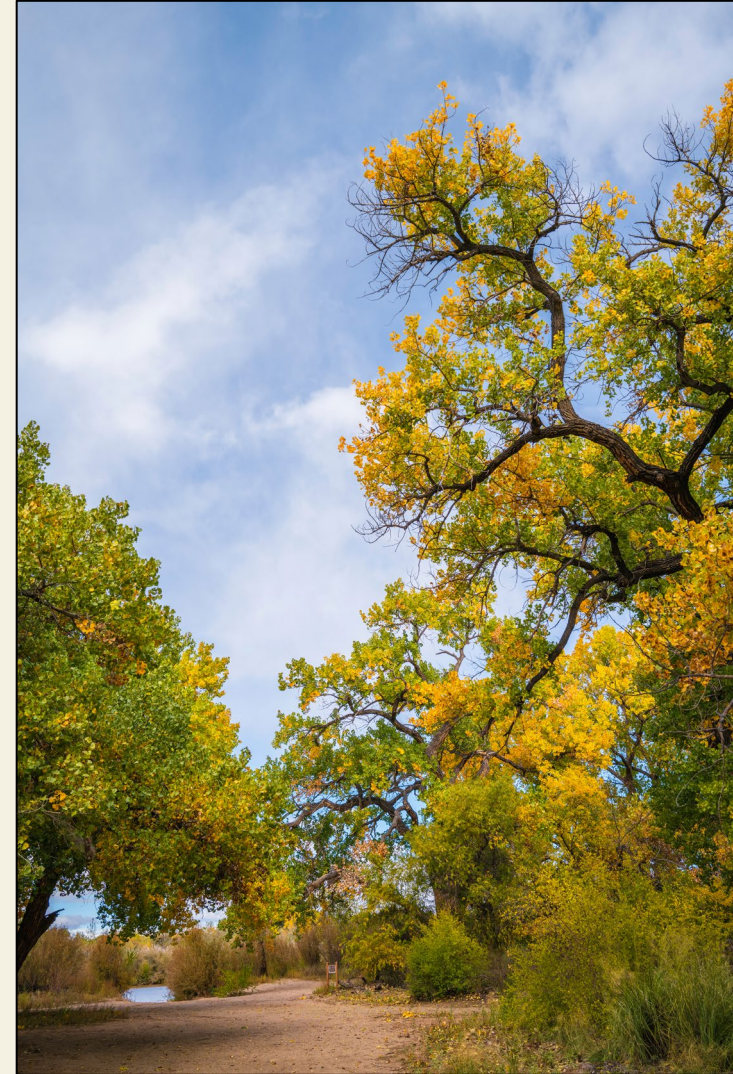


Manual Entry Required



RAWR Price Agreement

- ❑ Expedited method of procurement
- ❑ Can incorporate subcontractors not already included on the price agreement
 - Submit a letter of request to the agency
 - Must be in good standing on SAM.gov
- ❑ Next price agreement renewal anticipated in 2027



Rio Grande Bosque, Albuquerque, NM



Questions?

Kate Lacey-Young
Watershed Protection Section Program Manager
kathryn.lacey@env.nm.gov
(505) 946-8863