



*Environmental Protection & Compliance
Division*

Compliance Programs Group

Los Alamos National Laboratory
PO Box 1663, K490
Los Alamos, NM 87545
505-667-0666

Symbol: EPC-DO: 20-173

LAUR: 20-23998

Date: JUN 04 2020

Lynette Guevara
Assessment Coordinator
Monitoring and Assessment Section
New Mexico Environment Department
Surface Water Quality Bureau
P.O. Box 5469
Santa Fe, New Mexico 87502

**Subject: Sandia Canyon Assessment Units (AUs) Integrated Report Category 4b
Demonstration – AUs AU NM-9000.A_047 and NM-128.A_11**

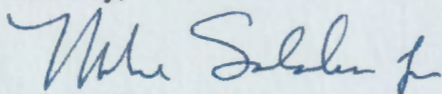
Dear: Ms. Guevara:

Attached for your review and consideration is the Department of Energy (DOE)/Triad National Security, LLC (Triad) Sandia Canyon AU 4b Demonstration (4b Demonstration). The 4b Demonstration presents information to the New Mexico Environmental Department justifying changing 303(d) listings to Category 4b status. The 4b Demonstration encompasses the entire reach of Sandia Canyon within lands managed by the DOE. The upper AU - NM-9000.A_047 - is located between National Pollutant Discharge Elimination System permitted Outfall 001 and Sigma Canyon and the lower - AU NM-128.A_11 - is located between Sigma Canyon and the LANL boundary near State Road 4.

The two parameters determined to be associated with impairments in the upper AU - NM-9000.A_047 are dissolved copper and total recoverable aluminum. The three parameters determined to be associated with impairments in the lower AU - NM-128.A_11 are adjusted gross alpha, total mercury and total recoverable aluminum.

Thank you for your assistance in the development of this document. Please contact Robert Gallegos (505) 665-0450 of the Environmental Compliance Programs (EPC-CP) if you have questions.

Sincerely,



Taunia Van Valkenburg
Group Leader

TVV/MTS/RMG:jdm

Attachment(s): Attachment 1 Sandia Canyon Assessment Unit NM-9000.A_047 and NM-128.A_11Dissolved Copper, Mercury and Total Recoverable Aluminum 4B Demonstration

Copy: Shelly Lemon, NMED/SWQB, Shelly.Lemon@state.nm.us
Kris Barrios, NMED/SWQB, Kristopher.barrios@state.nm.us
Karen E. Armijo, NA-LA, Karen.armijo@nnsa.doe.gov
Michael W. Hazen, ALDESHQSS, mhazen@lanl.gov
William R. Mairson, ALDESHQSS, wrmairson@lanl.gov
Enrique Torres, EWP, etorres@lanl.gov
Jennifer Payne, EPC-DO, jpayne@lanl.gov
Taunia S. Van Valkenburg, EPC-CP, tauniav@lanl.gov
Michael T. Saladen, EPC-CP, saladen@lanl.gov
Robert M. Gallegos, EPC-CP, rgallegos@lanl.gov
epccorrespondence@lanl.gov
adesh-records@lanl.gov

Attachment 1

**Sandia Canyon Assessment Unit NM-
9000.A_047 and NM-128.A_11**

**Dissolved Copper, Mercury and Total
Recoverable Aluminum 4B Demonstration**

EPC-DO: 20-173

LA-UR-20-26998

Date: JUN 04 2020

LA-UR-20-23998

June 4, 2020

EPC-DO: 20-173

**Sandia Canyon Assessment Unit NM-9000.A_047 and NM-128.A_11
Dissolved Copper, Mercury and Total Recoverable Aluminum 4B
Demonstration**

Prepared by the Environment, Safety, Health, Quality, Safeguards, and Security Directorate

Los Alamos National Laboratory (LANL), operated by Triad National Security (LANS), LLC, for the U.S. Department of Energy, has prepared this document. The public may copy and use this document without charge, provided that this notice and any statement of authorship are reproduced on all copies.

EXECUTIVE SUMMARY

The state of New Mexico Clean Water Act (CWA) §303(d)/§305(b) Integrated Report (hereafter, the Integrated Report) satisfies the statutory requirements of §303(d), §305(b), and §314 of the federal Water Pollution Control Act. The Integrated Report presents basic information on water quality and water pollution control programs in New Mexico to the U.S. Environmental Protection Agency (EPA) and the U.S. Congress as well as to the general public. The Integrated Report is first approved by the New Mexico Water Quality Control Commission, after which it is typically submitted to EPA Region 6 by April 1 of every even-numbered year.

The core of the Integrated Report is the CWA §303(d)/§305(b) Integrated List. In accordance with the EPA integrated listing guidance, the state of New Mexico's 2018-2020 Integrated Report listed the Sandia Canyon water quality Assessment Unit (AU) NM-9000.A_047 as not supporting coldwater aquatic life, livestock watering, and wildlife habitat designated uses and listed AU NM-128.A_11 as not supporting limited aquatic life, livestock watering and wildlife habitat. Further, the AUs were assigned a Category 5B and 5C status. Assessment Units assigned Category 5 constitute New Mexico's CWA §303(d) List of Impaired Waters. Section 303(d) and supporting regulations require the state of New Mexico to develop a total maximum daily load (TMDL) for each impaired AU-pollutant combination. TMDLs establish pollution reduction goals and load allocations necessary for impaired water to attain applicable water-quality standards (WQS). The Sandia Canyon AUs were assigned to Category 5B to acknowledge LANL's on-going discussions and research regarding applicable water quality standards on the Pajarito Plateau for these parameters. The Sandia AUs were assigned to Category 5C because concurrent-hardness and other data were not available at the time of assessment. Concurrent-hardness data need to be used, when available, to verify any cause of impairment that is a result of applying hardness-dependent criteria.

Two parameters determined to be associated with impairments in NM-9000.A_047 are dissolved copper and total recoverable aluminum. Three parameters determined to be associated with impairments in NM-128.A_11 are adjusted gross alpha, total mercury and total recoverable aluminum. This document presents information provided by the U.S. Department of Energy (DOE) and Los Alamos National Laboratory (LANL) to the New Mexico Environmental Department (NMED) to justify changing 303(d) listings to Category 4B status for NM-9000.A_047 (dissolved copper and total recoverable aluminum) and NM-128.A_11 (adjusted gross alpha, total mercury and total recoverable aluminum). A 4B status identifies an AU as impaired or threatened for one or more designated uses but does not require developing a TMDL because other pollution control requirements are reasonably expected to result in the attainment of the WQS in the near future.

EPA regulations recognize that alternative pollution control requirements that are stringent enough, in place, and monitored may make developing a TMDL unnecessary because both mechanisms would essentially achieve the same surface water-quality goal. Specifically, TMDLs are not required if technology-based effluent limitations, more stringent effluent limitations, or other pollution control requirements (e.g., best management practices) required by local, state, or federal authority are stringent enough to implement an applicable WQS [see 40 Code of Federal Regulations 130.7(b)(1)] within a reasonable period of time. Impaired water with adequate alternatives to TMDLs in place are commonly referred to as "Category 4b waters".

The Sandia Canyon AU 4B Demonstration (hereafter, the 4B Demonstration) provides the justification that regulatory controls, currently in place and planned, are stringent enough to implement applicable WQS. Water quality data will be developed pursuant to the sampling plan contained in this document and will be used to support this 4B Demonstration going forward.

The 4B Demonstration encompasses the entire reach of Sandia Canyon within lands managed by the USDOE. The upper AU - NM-9000.A_047 is located between National Pollutant Discharge Elimination System– (NPDES) permitted Outfall 001 and Sigma Canyon and the lower - AU NM-128.A_11 is located between Sigma Canyon and the LANL boundary near State Road 4. The upper Sandia AU is classified under water quality Segment 20.6.4.126 as perennial and the lower Sandia AU is classified under water quality Segment 20.6.4.128 as intermittent-ephemeral. A number of NPDES permits including, Industrial Outfall, Multi-Sector General, Construction General and the Individual Permit provide a regulatory framework for water quality standards (WQS) attainment. The Sandia Wetland Stabilization, Supplemental Environmental Projects (SEPs) and implementation of LANL's Storm Water Management Plan are expected to reduce potential migration of contaminated sediments and provide the necessary controls for eventual attainment WQS within the Sandia Canyon AUs.

CONTENTS

1. IDENTIFICATION OF ASSESSMENT UNIT (AU) AND STATEMENT OF PROBLEM CAUSING THE IMPAIRMENT	9
1.1 Assessment Unit Description	9
1.2 Impairment and Pollutant Causing Impairment.....	10
1.3 Sources of Pollutant Causing the Impairment	10
1.3.1 Point Source Locations and Potential Magnitudes.....	10
1.3.1.1 Industrial Point Source Permits (IPSP) Outfalls.....	10
1.3.1.2 Point Sources Covered Under the Storm Water Individual Permit.....	11
1.3.1.3 Point Sources Covered Under the Storm Water Multi-Sector General Permit.....	12
1.3.2 Nonpoint Source Locations and Potential Magnitudes.....	15
1.3.2.1 Nonpoint Sources From Urban and Developed Area Within the Laboratory.....	16
1.3.2.2 Nonpoint Source From Natural Background.....	16
1.3.2.3 Nonpoint Source From SEP Undeveloped Reference Site.....	17
2. DESCRIPTION OF POLLUTION CONTROLS AND HOW THEY WILL ACHIEVE WATER-QUALITY STANDARDS.....	18
2.1 Water Quality Targets	18
2.1.1 Numeric Targets.....	18
2.1.2 Current Conditions.....	18
2.1.3 Necessary Reduction to Meet Target.....	20
2.2 Point and Nonpoint Source Loading That When Implemented Will Achieve WQS	21
2.3 Controls That Will Achieve Water-Quality Standards	21
2.3.1 Point Souce Controls	21
2.3.1.1 Industrial and Sanitary Point Source Discharge Permits (IPSP) Point Source Controls.....	21
2.3.1.2 Individual Permit (IP) Point Source Controls Related to Certain RCRA SWMUs and AOCs.....	21
2.3.1.3 Storm Water Multi-Sector General Permit Controls.....	22
2.3.2 Non - Point Source Controls.....	23
2.3.2.1 Sandia Wetland Stabilization Project.....	23
2.3.2.2 Storm water Controls/Management from Developed Laboratory Areas.....	24
2.3.2.3 Sandia Canyon Monitoring Plan.....	25
2.3.2.4 Storm water Controls/Management from Urban Townsite in Upper Watershed.....	26
2.4 Description of Requirements under Which Pollution Controls Will Be Implemented.....	27
3. ESTIMATE OR PROJECTION OF TIME WHEN WQS WILL BE MET	27
4. SCHEDULE FOR IMPLEMENTING POLLUTION CONTROLS.....	27
5. MONITORING PLAN TO TRACK EFFECTIVENESS OF POLLUTION CONTROLS	28
6. COMMITMENT TO REVISE POLLUTION CONTROLS, AS NECESSARY	29
7. REFERENCES – SANDIA CANYON 4B DEMONSTRATION	29

Figures

Figure 1 Measured copper versus hardness-based acute copper criteria at E-124 and E125 (Sandia Canyon Above TA-72) 19

Figure 2 Total mercury vs wildlife habitat criteria 19

Tables

Table 1 Sandia Canyon AUs Water Quality Standards not Supported 10

Table 2 Industrial Point Source Permit Outfalls Discharging to the Upper and Lower Sandia AU 11

Table 3 Sandia Canyon Site Monitoring Areas Authorized to Discharge under Storm Water Individual Permit NM0030579 14

Table 4 Multi-Sector General Permit Sites in Sandia Canyon Assessment Unit NM-9000.A_47 165

Table 5 SEP Urban Range of Findings (µg/L) 16

Table 6 Background Pajarito Plateau Storm Water Pollutant Concentrations (µg/L) 16

Table 7 SEP Reference (Burnt Mesa 1) Range of Findings (µg/L).....17

Table 8 SEP Reference (Ponderosa 1) Range of Findings (ug/L).....17

Table 9 SEP Reference (San Juan Mesa 1) Range of Findings (ug/L).....17

Table 10 SEP Reference (San Juan Mesa 4) Range of Findings (ug/L).....18

Table 11 Dissolved Copper - 2014 - 201918

Table 12 Total Mercury - 2014 - 2019.....18

Table 13 Total Recoverable Aluminum.....19

Table 14 Storm Water Monitoring Plan.....20

Appendices

Appendix 1 Category 4B Maps

Appendix 2 Storm Water Management Plan

1. IDENTIFICATION OF ASSESSMENT UNITS AND STATEMENT OF PROBLEM CAUSING THE IMPAIRMENT

Appendix 1 contains a series of maps of the Sandia Canyon watershed, located within Los Alamos National Laboratory (the Laboratory). The maps show the two assessment units (AUs) as defined by the New Mexico Environment Department (NMED). The AUs range from National Pollutant Discharge Elimination System (NPDES) Outfall 001 east to the Laboratory boundary at New Mexico State Road 4 (SR-4). The 4b Demonstration covers the upper perennial reach from NPDES Outfall 001 to Sigma Canyon and the lower ephemeral reach from Sigma Canyon to the Laboratory boundary at SR-4. The AUs are described in the state of New Mexico 2018-2020 Clean Water Act (CWA) §303(d)/§305(b) Integrated Report (1).

1.1 Assessment Unit Description

The demonstration should identify the impaired assessment unit, including name, general location and State-specific location identifier.

1. AU Name: Upper Sandia Canyon AU (NPDES Outfall 001 to Sigma Canyon)
 - AU ID: NM-9000.A_047
 - 2.21-mi reach
2. AU Name: Lower Sandia Canyon AU (Sigma Canyon to LANL Boundary)
 - AU ID: NM-128.A_11
 - 3.4-mi reach

Sandia Canyon originates in the main Laboratory Technical Area 03 (TA-03) at an elevation of approximately 7,300 ft. The reach extends downstream for 5.5 mi to the Laboratory boundary at SR-4. Overall, the drainage area for the two AUs is approximately 2.52 mi², encompassing Laboratory property, private property, and the now-closed Los Alamos County landfill.

Three NPDES Permits provide coverage for current and historical activities within the upper and lower AUs:

1. The Industrial Point Source Permit (IPSP, NPDES Permit No. NM0028355) covers four outfalls,
2. The Storm Water Individual Permit (IP, NPDES Permit No. NM0030759) covers nineteen Resource Conservation and Recovery Act (RCRA) solid waste management units (SWMUs) and areas of concern (AOCs) associated with historical Laboratory activities, and
3. The Storm Water Multi-Sector General Permit (MSGP, NPDES Permit Tracking No. NMR05GB21) covers twelve ongoing operational industrial facilities subject to this EPA general permit.

The upper AU is classified as perennial, in Water Quality Segment (Segment) 20.6.4.126 NMAC, with designated uses of coldwater aquatic life, livestock watering, wildlife habitat, and secondary contact (2). The lower AU is classified as ephemeral-intermittent, in Segment 20.6.4.128 NMAC, with designated uses of limited aquatic life, livestock watering, wildlife habitat and secondary contact (2).

1.2 Impairment and Pollutant Causing Impairment

The demonstration should identify the applicable water quality standards not supported and associated pollutant causing the impairment.

According to the 2018 - 2020 CWA §303(d)/§305(b) Integrated List, the following Water Quality Standards (WQS) are not supported (Table 1):

**Table 1
Sandia Canyon AUs Water Quality Standards not Supported**

Designated Use Not Supported	Parameter with Associated WQS	Sandia Canyon AU (LANL Boundary at SR-4 to NPDES outfall 001)
Coldwater Aquatic Life	Dissolved Copper-Acute AL	NM-9000.A_047
Coldwater Aquatic Life	Total Recoverable Aluminum	NM-9000.A_047
Limited Aquatic Life	Total Recoverable Aluminum	NM-128.A_11
Livestock Watering	Total Recoverable Aluminum	NM-128.A_11
Wildlife Habitat	Total Mercury	NM-128.A_11

1.3 Sources of Pollutant Causing the Impairment

The demonstration should include a description of the known and likely point, nonpoint, and background (upstream inputs) sources of the pollutant causing the impairment, including the potential magnitude and locations of the sources. In cases where some portion of the impairment may result from naturally occurring sources (natural background), the demonstration should include a description of the naturally occurring sources of the pollutant to the impaired assessment unit.

1.3.1 Point Source Locations and Potential Magnitudes

1. The Industrial Point Source Permit (IPSP, NPDES Permit No. NM0028355)
2. The Storm Water Individual Permit (IP, NPDES Permit No. NM0030759)
3. The Storm Water Multi-Sector General Permit (MSGP, NPDES Permit Tracking No. NMR05GB21)

1.3.1.1 Industrial Point Source Permit (IPSP) Outfalls

Four outfalls, permitted under the NPDES IPSP, discharge to the upper and lower Sandia AUs, as presented in Table 2 below. The location of the outfalls are indicated in the maps contained in Appendix 1. NPDES Outfall 001, which is the main effluent source of water to the AU, averages approximately 290,000 gal./d from treated sanitary and power plant effluent. Cooling tower outfalls 03A027 and 03A199 contribute less than 100,000 gal./d combined. Cooling tower 03A113 discharges approximately 1000 gal/d.

Table 2
Industrial Point Source Permit Outfalls Discharging to the Upper and Lower Sandia AU

Outfall Category	ID No.	Location/ Facility	Watershed
Power Plant/Sanitary Effluent Reclamation Facility (SERF) Discharge (001)	001	TA-3-22	Sandia (upper)
Treated Cooling Water (03A)	03A027	TA-3-2327	Sandia (upper)
Treated Cooling Water (03A)	03A199	TA-3-1837	Sandia (upper)
Treated Cooling Water (03A)	03A113		Sandia (lower)

The current NPDES permit, issued on August 12, 2014 includes effluent limits for copper, total recoverable aluminum and mercury effective on September 30, 2017. The permit incorporated monitoring requirements for adjusted gross alpha.

NMED's certification of the permit issued on September 19, 2013 required control of copper pollutants. Effluent limitations were established at Outfalls 001, 027, 113 and 199 to ensure that the permit is protective of State WQS. Hardness effluent characteristic of the discharge from Outfall 001 (78.8 mg/L) was used to represent the receiving stream hardness and calculate the effluent limitations for the certification.

On March 26, 2019, LANL submitted a reapplication for permit coverage. On November 30, 2019, EPA issued a draft permit. Based on the draft, effluent limits and monitoring requirements remain in effect for copper at Outfall 001, 027 and 199. Total recoverable aluminum monitoring requirements remain in effect at all outfalls. Monitoring requirements for total mercury are established for Outfall 113. The public comment period has been extended to May 31, 2020.

1.3.1.2 Point Sources Covered Under the Storm Water Individual Permit (IP)

The IP authorizes discharges of storm water associated with industrial activities from specified SWMUs and AOCs. A SWMU is a discernible unit at which solid wastes may have been "routinely and systematically released" and could result in a release of hazardous constituents. The Sites regulated under the IP are a subset of the SWMUs and AOCs that are being addressed under the March 2005 Compliance Order of Consent (the Consent Order) (3).

For purposes of monitoring and management under the IP, Sites are grouped into small watersheds called site-monitoring areas (SMAs). An SMA is a single drainage area within a subwatershed and may include more than one Site. The IP treats the potential historical releases at a Site as an "industrial activity" that creates a "point source discharge" and directs the Permittees to monitor storm water discharges from Sites at specified SMAs. Storm water from a Site may drain to multiple subwatersheds and may be associated with multiple SMAs.

A Site that met the definition of a SWMU or AOC was evaluated for inclusion in the IP based on the following criteria:

1. The SWMU/AOC is exposed to storm water (e.g., not capped or subsurface);
2. The SWMU/AOC contains "significant industrial material" (e.g., not cleaned up or has contamination in place based on storm water, sediment, and soil data available at the time the permit application was submitted); and

3. Potentially impacts surface water. Based on an evaluation in the field for potential to discharge sediment to a Water of the U.S. or Water of the State.

SWMUs and AOCs are grouped for investigation under the Consent Order into watershed-based geographic areas known as aggregate areas. The upper Sandia Canyon Aggregate Area is located in TA-03, TA-60, and TA-61 with a boundary approximately equal to the upper Sandia Canyon AU. Nineteen Sites within Sandia Canyon area are permitted under the IP (Table 3). These nineteen Sites are grouped into nine SMAs.

Storm water monitoring for metals, including copper and total recoverable aluminum is required at all nineteen sites. The IP establishes target action levels (TALs) that are equivalent to New Mexico State water-quality criteria. These TALs are used as benchmarks to determine the effectiveness of control measures implemented under the IP. The maps in Appendix 1 show the locations of the SMAs in the AUs. The Laboratory has been collecting storm water samples under the IP since the spring of 2011.

The IP Program is required, at a minimum, to install and maintain baseline control measures at every SMA to minimize pollutants in storm water discharges. If SMA stormwater samples exceed any TAL, Corrective Actions must be taken to either meet the TAL, achieve total retention of storm water discharge, totally eliminate exposure of pollutants at the Site, or demonstrate that the Site has achieved "corrective action complete with/without controls" status or a Certificate of Completion under NMED's Consent Order.

1.3.1.3 Point Sources Covered Under the Storm Water Multi-Sector General Permit (MSGP)

The MSGP regulates storm water discharges from identified industrial activities and their associated facilities. Currently, there are seven active MSGP-regulated facilities with the potential to discharge storm water to the AU. Five of the seven are located immediately adjacent to upper Sandia Canyon. The other two MSGP facilities convey runoff to upper Sandia Canyon via the Laboratory's storm drain infrastructure. There are no active MSGP-regulated facilities located in lower Sandia Canyon.

Table 4 lists the seven MSGP facilities, along with the monitored outfalls for each facility, and monitoring requirements for aluminum and copper in upper Sandia Canyon. The maps in Appendix 1 shows the location of the MSGP facilities.

MSGP-regulated industrial activities within the AU include metal product fabrication, timber products, electricity generation, vehicle and equipment maintenance, recycling activities, and warehousing activities. For each type of industrial activity regulated by the MSGP, the MSGP identifies specific constituents required to be analyzed for in the permit-required storm water monitoring (i.e., potential pollutant for that activity). The MSGP then stipulates a benchmark concentration for that potential pollutant. Section 9.6.2 of the MSGP contains conditions modifying these benchmarks to reflect State of New Mexico water quality standards. Per the MSGP, aluminum is identified as a potential pollutant at two active MSGP facilities: the TA-3-38 Metals Fab Shop (Sector AA) and TA-60-1 Heavy Equipment Yard (Sector AA); copper is not identified as a potential pollutant associated with MSGP activities located in upper Sandia Canyon.

In addition to monitoring for the MSGP specified benchmark pollutants, if an industrial facility discharges to an impaired water body the MSGP requires monitoring for all pollutants for which the water body is impaired. Therefore, storm water monitoring for dissolved copper and total recoverable aluminum is conducted at all the MSGP facilities discharging to upper Sandia Canyon.

Section 9.6.2 of the MSGP requires hardness-based water quality standards for dissolved copper and total recoverable aluminum that supersede the benchmark values stipulated by the MSGP. Based on an

average calculated hardness of 82 mg/L, the New Mexico hardness-based water quality standards for total recoverable aluminum and dissolved copper in upper Sandia Canyon are 1010 µg/L and 7 µg/L, respectively.

The MSGP permit period is from June 4, 2015 to June 4, 2020. Authorization to discharge was granted to Triad National Security, LLC, the Laboratory's current maintenance and operations contractor, under permit tracking number NMR050013 on November 1, 2018. Due to the semi-arid climate and seasonal freezing conditions in Los Alamos, and in accordance with Section 6.1.6 of the MSGP, a quarterly storm water monitoring period from April 1 - November 30 was established. Quarters were identified as two-month periods (Apr-May, June-July, Aug-Sept, Oct-Nov). At each facility, monitoring commenced in April 2019. For the period April through November 2019, 9 of 14 (64%) of dissolved copper and 12 of 15 (80%) of total recoverable aluminum values at MSGP facilities in upper Sandia Canyon exceeded the hardness-based water quality standard. Routine facility inspections are performed monthly. Section 3.1 of the MSGP requires inspectors to examine the following: Industrial materials, residue or trash that may have or could come into contact with stormwater;

- Leaks or spills from industrial equipment, drums, tanks, and other containers;
- Offsite tracking of industrial or waste materials, or sediments where vehicles enter or exit the site;
- Tracking or blowing of raw, final or waste materials from areas of no exposure to exposed areas;
- Control measures needing replacement, maintenance or repair.

Sections 4.1 and 4.3.1 of the MSGP requires immediate corrective action be taken when any of the following conditions have occurred:

- An unauthorized release or discharge (e.g., spill, leak, or discharge of non-stormwater not authorized by an NPDES permit);
- A discharge violates a numeric effluent limit;
- Control measures are not stringent enough for the discharge to meet applicable water quality standards or the non-numeric effluent limits in the permit; A required control measure was never installed, was installed incorrectly, or is not being properly operated or maintained; or
- Whenever a visual assessment shows evidence of stormwater pollution.

During the current permit period to date, approximately 195 corrective actions have been performed at active MSGP facilities in upper Sandia Canyon. Of those, approximately 3 were in response to the exceedance of a hardness-based benchmark for total recoverable aluminum and 18 in response to the exceedance of the water quality standard for the impaired waters pollutants dissolved copper or total recoverable aluminum. Reference background here if appropriate.

Table 3

Sandia Canyon Site Monitoring Areas Authorized to Discharge under Storm Water Individual Permit NM0030579

SMA	AU	Site Monitoring Requirements ¹
S-SMA-0.25	NM-9000.A_047	Adjusted Gross Alpha, Total Recoverable Aluminum, Total Mercury and, Copper
S-SMA-1.1	NM-9000.A_047	Adjusted Gross Alpha, Total Recoverable Aluminum, Total Mercury and, Copper
S-SMA-2	NM-9000.A_047	Adjusted Gross Alpha, Total Recoverable Aluminum, Total Mercury and, Copper
S-SMA-2.01	NM-9000.A_047	Adjusted Gross Alpha, Total Recoverable Aluminum, Total Mercury and, Copper
S-SMA-2.8	NM-9000.A_047	Adjusted Gross Alpha, Total Recoverable Aluminum, Total Mercury and, Copper
S-SMA-3.51	NM-9000.A_047	Adjusted Gross Alpha, Total Recoverable Aluminum a, Total Mercury nd, Copper
S-SMA-3.52	NM-9000.A_047	Adjusted Gross Alpha, Total Recoverable Aluminum, Total Mercury and, Copper
S-SMA-3.53	NM-9000.A_047	Adjusted Gross Alpha, Total Recoverable Aluminum, Total Mercury and, Copper
S-SMA-3.6	NM-9000.A_047	Adjusted Gross Alpha, Total Recoverable Aluminum, Total Mercury and, Copper
S-SMA-3.7	NM-128.A_11	Adjusted Gross Alpha, Total Recoverable Aluminum, Total Mercury and, Copper
S-SMA-3.71	NM-128.A_11	Adjusted Gross Alpha, Total Recoverable Aluminum, Total Mercury and, Copper
S-SMA-3.72	NM-128.A_11	Adjusted Gross Alpha, Total Recoverable Aluminum, Total Mercury and, Copper
S-SMA-3.95	NM-128.A_11	Adjusted Gross Alpha, Total Recoverable Aluminum, Total Mercury and, Copper
S-SMA-4.1	NM-128.A_11	Adjusted Gross Alpha, Total Recoverable Aluminum, Total Mercury and, Copper
S-SMA-4.45	NM-128.A_11	Adjusted Gross Alpha, Total Recoverable Aluminum, Total Mercury and, Copper
S-SMA-5	NM-128.A_11	Adjusted Gross Alpha, Total Recoverable Aluminum, Total Mercury and, Copper
S-SMA-5.2	NM-128.A_11	Adjusted Gross Alpha, Total Recoverable Aluminum, Total Mercury and, Copper
S-SMA-5.5	NM-128.A_11	Adjusted Gross Alpha, Total Recoverable Aluminum, Total Mercury and, Copper
S-SMA-6	NM-128.A_11	Adjusted Gross Alpha, Total Recoverable Aluminum, Total Mercury and, Copper

¹ Source: Appendix B, NPDES Permit No. NM030759, November 2010.

² Source: 2012 Update to the Site Discharge Pollution Prevention Plan, Revision 1, Los Alamos National Laboratory NPDES Permit No. NM0030759, May 1, 2013, Sandia/Mortandad Watershed Receiving Waters: Sandia Canyon, Cañada del Buey, Mortandad Canyon, and Ten Site Canyon, Volume 2.

³ Upper Sandia Canyon Aggregate Supplemental Investigation Report, August 2013.

**Table 4
Multi-Sector General Permit Sites in Sandia
Canyon Assessment Unit NM-9000.A_47**

Facility Name	Outfall / Location ID#	Sector	Total Recoverable Aluminum	Dissolved Copper
TA-3-22 Power and Steam Plant	005 / MSGP00501	O	IW ¹	IW
	009 / MSGP00901	O	IW	IW
	012 / MSGP01201	O	IW	IW
TA-3-38 Carpenter Shop	074 / MSGP07401	A	IW	IW
TA-3-38 Metals Fab Shop	076 / MSGP07601	AA	B ² , IW	IW
TA-60 Materials Recycling Facility	029 / MSGP02901	N	IW	IW
TA-60 Roads and Grounds	032 / MSGP03201	P	IW	IW
	037 / MSGP03701	P	IW	IW
	039 / MSGP03901	P	IW	IW
	042 / MSGP04201	P	IW	IW
TA-60-1 Heavy Equipment Yard	022 / MSGP02201	AA, P	B, IW	IW
TA-60-2 Warehouse	026 / MSGP02601	P	IW	IW

¹Annual Impaired Waters monitoring requirement

²Quarterly Benchmark monitoring requirement

1.3.2 Non-point Source Locations and Potential Magnitudes

The watershed discharging to the Sandia Canyon AUs is approximately 2.52mi² and includes 29 acres of area under the control of Los Alamos County. Approximately 350 acres are comprised of impervious surfaces located within an urban environment. The majority of the upper watershed consist of impervious surfaces located within an urban environment consisting of buildings, parking lots, and light industrial facilities. Several terrestrial habitats exist within the Upper Sandia AU, including mixed conifer, semi-evergreen shrub-land, dense oak shrub-land and non-forested wetland riparian. Runoff in all urbanized areas is primarily managed through LANL's storm drain infrastructure system and discharged at specific locations near the head of the canyon. Remaining areas discharge to surface conveyances that flow directly to the canyon.

Within this 150 acre area are seven NPDES MSGP regulated facilities with a combined total area of 35 acres. These facilities manage storm water runoff and potential pollutants in accordance with the MSGP requirements, as described in section 1.3.1.3. Also within the 150 acres are nine SWMUs, which are authorized to discharge under the IP, and comprise less than an acre. However, the drainage to these SWMUs comprises discharge to the SMA from 100 acres of developed locations.

1.3.2.1 Non-point Source from Urban and Developed Areas within the Laboratory

Storm water samples from developed areas within TA-3 were collected in 2018 under the Sampling and Monitoring Supplemental Environmental Project (SEP). The purpose of the SEP was to fill data gaps and characterize the sources of pollutants in storm water runoff and impacts on receiving waters in and around the Laboratory. A broad range of pollutants were targeted from Laboratory developed areas and natural landscapes. In the developed areas of the Laboratory, parking lots and associated buildings runoff were characterized. The data will be helpful as a reference when evaluating other monitoring locations down gradient of these sites where multiple sources contribute to water and sediment quality. Only those parameters identified as causing an impairment are summarized in Table 5.

**Table 5
SEP Urban Range of Findings (µg/L)**

Dissolved Copper ug/l	Total Mercury ug/l	Total Recoverable Aluminum ug/l
11.1 - 18.2	<0.067 – 0.11	23.3 - 411

1.3.2.2 Non-point Source from Natural Background

Naturally occurring sources of copper, aluminum and mercury are summarized in the Metals Background Report (4). Background Storm water samples were derived from two primary groups of locations: tributaries that enter the Laboratory’s western (upstream) boundary and tributaries in a remote area north of the community of Los Alamos or Reference Area. The results from Reference Area stations reflect background runoff conditions from landscapes at Sandia Canyon with surficial geological materials derived from Bandelier Tuff, Puye Formation, and the Tschicoma Formation (4). The results from Western Boundary stations reflect background runoff conditions from landscapes with surficial geological materials derived from Bandelier Tuff and diorite-rich Tschicoma Formation (4). Copper, aluminum and mercury background values from undeveloped areas are presented in Table 5b.

**Table 6
Background Pajarito Plateau Storm Water Pollutant Concentrations (µg/L)**

Parameter	Reference Area ^a Background Values	Western Boundary ^b Background Values
Copper	3.43	5.7
Mercury	c	c
Aluminum	2210	1780

Note: All the Reference and Western Boundary station locations were upstream of and distant from Laboratory liquid discharges.

^a Reference Area—Ephemeral tributaries to the Rio Grande north of the Laboratory and urban Los Alamos County. The northernmost tributary sampling stations is located in middle portion of the Pajarito Plateau. Surface water monitored at the Reference sites is mostly generated as storm water from local storms affecting the northern portion of the Pajarito Plateau.

^b Western Boundary—Ephemeral, intermittent, and perennial tributaries to the Rio Grande to the west and upstream of the Laboratory and urban Los Alamos County.

c. Insufficient number of detections to calculate statistical distribution.

1.3.2.3 Non-point Source from SEP Undeveloped Reference Sites

On January 22, 2016 NMED and DOE reach a settlement agreement to resolve issues as they relate to the incident at the Waste Isolation Pilot Project (WIPP). The settlement agreement called for a number of corrective actions including increased sampling and monitoring capabilities for storm water runoff in and around the Laboratory. Water Quality Monitoring sampling under the SEP was carried out in 2017 and 2018. The purpose of the monitoring was to fill data gaps to characterize the sources of pollutants in storm water runoff and impacts on receiving waters in and around the Laboratory including the Sandia Canyon AUs. A broad range of pollutants (including dissolved copper, total recoverable aluminum and total mercury) are targeted from the following sources: Laboratory developed areas, Laboratory firing sites, natural landscapes, and atmospheric deposition. Additionally, storm water samples from undeveloped reference sites on the Pajarito Plateau were collected. Appendix 1 includes maps with the sampling locations. As indicated above past investigations of storm water quality from undeveloped reference sites have been previously conducted by the Laboratory. The SEP selected sampling and monitoring of storm water and related media in undeveloped watersheds to quantify concentrations of pollutants sourced from natural landscapes (primarily originating from natural geologic sources in sediments). The data from the four undeveloped reference are summarized in Tables 7-10:

**Table 7
SEP Reference (Burnt Mesa 1) Range of Findings (µg/L)**

Dissolved Copper ug/l	Total Mercury ug/l	Total Recoverable Aluminum ^d ug/l
1.39 – 3.2	<0.067 – 0.164	1030 - 2860

d. Sample prepared with 10um filter.

**Table 8
SEP Reference (Ponderosa 1) Range of Findings (ug/L)**

Dissolved Copper ug/l	Total Mercury ug/l	Total Recoverable Aluminum ^d ug/l
1.57 – 2.84	<0.067 – 0.079	1290 - 3580

d. Sample prepared with 10um filter.

**Table 9
SEP Reference (San Juan Mesa 1) Range of Findings (ug/L)**

Dissolved Copper ug/l	Total Mercury ug/l	Total Recoverable Aluminum ^d ug/l
1.1 – 2.44	<0.067 – 0.482	766 - 22700

d. Sample prepared with 10um filter.

Table 10
SEP Reference (San Juan Mesa 4) Range of Findings (ug/L)

Dissolved Copper ug/l	Total Mercury ug/l	Total Recoverable Aluminum ^d ug/l
0.601 – 22.2	<0.067 – 0.215	751 - 2210

2. DESCRIPTION OF POLLUTION CONTROLS AND HOW THEY WILL ACHIEVE WATER-QUALITY STANDARDS

2.1 Water Quality Targets

The demonstration should identify a numeric water quality target(s). That is the chemical causing the impairment and the numeric criteria for that chemical in the water quality standard (i.e., the chemical causing the impairment and the water quality standard). Express the relationship between any necessary reduction of the pollutant of concern and the attainment of the numeric water quality target.

2.1.1 Numeric Targets

The acute and chronic numeric water quality hardness based targets for dissolved copper and total recoverable aluminum are described in 20.6.4.900(I)(1) and (2) NMAC(2). The use specific numeric targets for total mercury are described in 20.6.4.900(J)(1) NMAC(2).

2.1.2 Current Conditions

Storm water sampling data obtained for the period of July 2014 to July 2019 from environmental surveillance gages E124 and E125 represents current conditions (Table 11-13). E124 is located near the end of NM-9000.A_047 and E125 is located at the end of NM-128.A_11 (Appendix 1). E124 has been in operation since July of 2014 and E125 has been in operation since October 1994.

Table 11
Dissolved Copper - 2014–2019

Monitoring Location	Min (µg/L)	Max (µg/L)	Mean (µg/L)	No. of Samples	Ratio of Storm water Samples	No. of Acute WQC Exceedances ¹
E124	2.85	5.44	3.7	6	6/6	1/6
E125		3.98		1	1/1	0/1

1. Hardness-acute aquatic life criteria were calculated using the hardness-dependent equations in 20.6.4.900 NMAC Subsection I (2)

Table 12
Total Mercury – 2014 - 2019

Monitoring Location	Min (µg/L)	Max (µg/L)	Mean (µg/L)	No. of Samples	Ratio of Storm water Samples	WQC Exceedances
E124	0.496	2.05	0.761	8	8/8	4/14
E125		4.22		1	1	1

Table 13
Total Recoverable² Aluminum – 2014 – 2019

Monitoring Location	Min (ug/L)	Max (ug/L)	Mean (ug/L)	No. of Samples	Ratio of Storm water Samples	No. of Acute WQC Exceedances ³
E124	4340	13800		3	3/3	3
E125	No Data					

2. Samples filtered with 10um filter

3. Hardness-acute aquatic life criteria were calculated using the hardness-dependent equations in 20.6.4.900 NMAC Subsection I (2)

Figures 1 and 2 show copper and total recoverable aluminum levels in relation to water quality criteria.

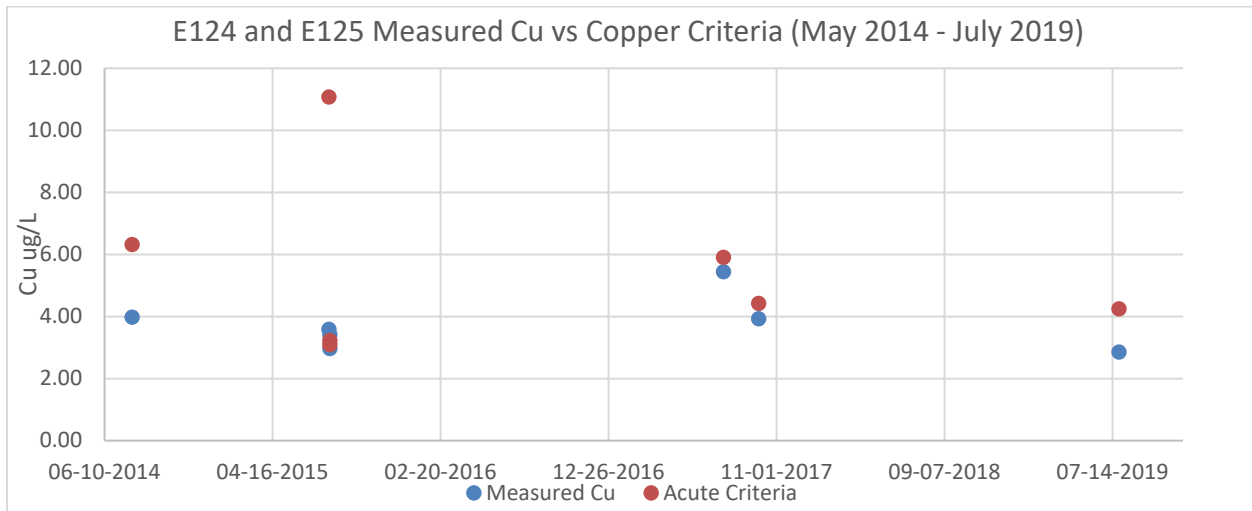


Figure 1 Measured copper versus hardness-based acute copper criteria at E-124 and E125 (Sandia Canyon Above TA-72)

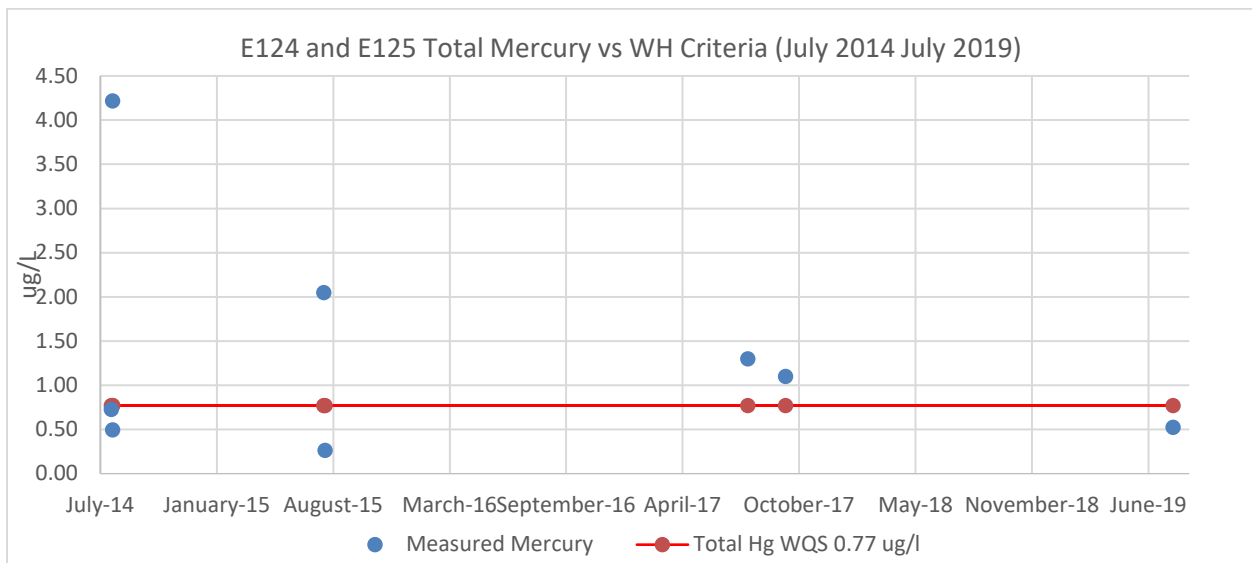


Figure 2 Total mercury vs wildlife habitat criteria

2.1.3 Necessary Reduction to Meet Target

The eventual achievement of water quality targets requires addressing impacts from storm water flows. To help address this issue the Laboratory developed the Sandia Storm Water Management Plan (SWMP), which is included in Appendix 2. The SWMP uses the principles established for the MS4 Phase II Storm Water Program. This requires the development of measurable goals to assess the effectiveness of storm water controls that address the six minimum control measures defined in the regulations. The SWMP was developed in anticipation of an anticipated MS4 permit for the Laboratory. Urban non-point source discharges are an important source of pollutants to Sandia Canyon. The highest values of filtered copper are most often observed in storm water originating from urban runoff from parking lots, roads, and buildings in TA-03. Aluminum and copper exceedances are attributed to urban runoff and naturally occurring sediments. Mercury is associated with SWMU and AOCs.

The sampling points identified in Table 14 will serve as the location for determining reductions in concentrations of parameters causing impairment (dissolved copper, total recoverable aluminum and total mercury) for attainment of water-quality targets under the 4b Demonstration. The locations of the sampling points are shown in the maps in Appendix 1.

Table 14
Storm Water Monitoring Plan

Assessment Unit	Sample Location	DOC (F)	Ca/Mg/ Hardness (F)	Copper (F)	Mercury (UF)	Total Recoverable Aluminum (F10u)
(Upper) Sandia Canyon (Sigma Canyon to NPDES outfall 001) NM-9000.A_047	SWMP-S-01	4	4	4		4
	SWMP-S-02	4	4	4		4
Upper and Lower	E124	4	4	4	4	4
	SWMP-S-03	4	4		4	4
(Lower) Sandia Canyon (within LANL below Sigma Canyon) NM-128-A_11	SWMP-S-04	4	4		4	4
	SWMP-S-05	4	4		4	4
	SWMP-S-06	4	4		4	4

F = Filtered with 0.45 µm filter

2.2 Point and Nonpoint Source Loading That When Implemented Will Achieve WQS

Describe the cause-and-effect relationship between the water quality standard (and numeric water quality targets as discussed above) and the identified pollutant sources and, based on this linkage, identify what loadings are acceptable to achieve the water quality standard.

Existing data indicate that the water quality targets are not currently achieved. This is particularly true under storm water flow conditions. Recent data obtain from the SEP monitoring project indicate that the urban/developed landscapes at the Laboratory are s a major source of pollutants to the AUs. Effective management of storm water flows is key to achieving numeric water quality targets.

2.3 Controls That Will Achieve Water-Quality Standards

The following serve as the primary controls for eventual attainment of the water quality targets:

1. Continued application of NPDES permits and regulatory controls.
2. Sandia Wetland Grade Control Structure
3. Supplemental Environmental Projects
4. Storm Water Management Plan

2.3.1 Point Source Controls

Three major NPDES permits provide the point source controls for the AUs. The permits are specifically designed to monitor and prevent or reduce the amount of pollutants entering the AUs. These programs contain mandated provisions and limits, with specified implementation time lines, to address impaired water conditions.

2.3.1.1 Industrial and Sanitary Point Source Discharge Permit (IPSP) Point Source Controls

The IPSP Discharge Permit is currently the only active NPDES Industrial and Sanitary Outfall Discharge Permit at the Laboratory. The effective dates of the permit: March 27, 2015 to September 30, 2019. Reapplication for a new permit was submitted on March 26, 2019. The permit is extended until a new permit is issued. The IPSP Permit includes 11 outfalls, three of which discharge to the upper AU. Effluent limits and monitoring has been established for dissolved copper, total recoverable aluminum and total mercury. The locations of these outfalls are shown in the maps in Appendix 1.

NPDES Outfall 001 is the main effluent source of water to Sandia Canyon and average discharges are approximately 332,000 gal. per day. Outfall 03A027 and 03A199 contribute less than 100,000 gal. per day. Persistent surface flows in the upper Sandia AU (NM-9000.A_047) originate from IPSP discharges.

SERF, located at the head of Sandia Canyon, provides tertiary treatment of the Sanitary Waste Water System (SWWS) facility effluent so that it can be reused/recycled as makeup water in the cooling towers at the Laboratory or discharged to NPDES Outfall 001. The facility is designed to treat water to meet effluent limitations set in NPDES Permit NM0028355. The facility utilizes chemical precipitation, flocculation, microfiltration, reverse osmosis, and pH adjustment.

2.3.1.2 Individual Permit (IP) Point Source Controls Related to Certain RCRA SWMUs and AOCs

Section 1.3.1.2 provides an overview of the key provisions of the IP and the relationship to the Consent Order requirements. The IP categorizes a Site as having had an “industrial activity” that creates a “point

source discharge” and directs the Permittees to monitor representative storm water discharges from Sites at specified sampling points known as SMAs.

The selection of analytical monitoring suites and Site priority designations is based on historical information and any storm water, sediment, and soil data available at the time the Permit application was submitted. The investigation and remediation of SWMUs and AOCs began during the 1990s before the effective date of the Individual Permit (November 1, 2010) and continue concurrently with implementation of the Individual Permit.

The Permit establishes Target Action Levels (TALs) that are equivalent to New Mexico water-quality criteria. These TALs are used as benchmarks to determine the effectiveness of control measures implemented under the Permit. That is, confirmation monitoring sample results for an SMA are compared with applicable TALs. If one or more confirmation monitoring results exceed a TAL, the Permittees must take corrective action through the installation of measures reasonably expected to (1) meet applicable TALs at the Site, (2) achieve total retention of storm water discharges from the Site, or (3) totally eliminate exposure of pollutants to storm water; otherwise, the Permittees must demonstrate the Site has a Certificate of Completion (COC) under the Consent Order.

The Individual Permit requires that the Permittees certify to EPA completion of corrective action at each Site by a specific deadline based upon the Site’s status as either a High Priority or Moderate Priority Site.

Table 3 lists the 13 permitted sites in the IP for the AUs. The maps in Appendix 1 show the locations of the SMAs.

2.3.1.3 Storm Water Multi-Sector General Permit Controls

The NPDES MSGP regulates storm water discharges from identified industrial activities and their associated facilities. Table 4 lists the MSGP facilities and monitored outfalls discharging storm water to the AU and the maps in Appendix 1 show the location. MSGP regulated activities within the AU include metal fabrication; vehicle and equipment maintenance; recycling activities; electricity generation; and warehousing activities. LANS and the DOE are permitted under the EPA 2015 NPDES Storm Water MSGP for Industrial Activities (2015 MSGP). The proposed 2020 MSGP has been issued but not yet final. Administrative continuance of the 2015 MSGP is in effect until a new permit is issued.

The MSGP requirements include the implementation of control measures, development of facility-specific Storm Water Pollution Prevention Plans (SWPPPs), Corrective Action requirements for identified issues, and monitoring storm water discharges from permitted outfalls. Compliance with these requirements is achieved primarily by:

- Identifying potential pollutant sources and activities that could adversely impact water quality.
- Identifying and providing structural and nonstructural controls to limit the impact of potential pollutants,
- Developing and implementing facility-specific SWPPPs,
- Implementing permit-specified Corrective Actions for any identified issues,
- Monitoring storm water runoff for industrial sector-specific benchmark parameters, impaired water constituents, and effluent limitations, and

- Visually inspecting storm water runoff to assess color; odor; floating, settled, or suspended solids; foam; oil sheen; and other indicators of storm water pollution.

Minimizing the exposure of potential pollutant sources and activities to storm water is primarily achieved through administrative controls associated with work processes and engineering controls such as covering, secondary containment, berms to direct runoff flow, and storm drain inlet protection. Erosion and sediment transport at facilities is also monitored and addressed through the implementation of structural controls or stabilization of areas with asphalt, concrete, or perennial vegetation.

Evaluation of storm water monitoring results is performed to identify the need to modify existing controls or implement new controls. Storm water monitoring under the 2015 MSGP was conducted.

2.3.2 Non-Point Source Controls

A number of non-point source controls and initiatives have been established in the upper and lower Sandia Canyon AUs. Of particular importance to non-point source mitigation was the installation of the Sandia Grade Control Structure (GCS) and two grade control structures completed in the lower AU under the Supplemental Environmental Projects (SEPs). On January 22, 2016 NMED and DOE reach a settlement agreement to resolve issues as they relate to the incident at WIPP. The settlement agreement calls for a number of corrective actions and SEPs. Execution of the SEPs provided the Laboratory the opportunity to address storm water management issues including design and installation of engineering structures to slow storm water flow and decrease sediment load to improve water quality. The SEP also called for increase sampling and monitoring capabilities for storm water runoff in and around the Laboratory as indicted in section 1.3.2.3.

2.3.2.1 Sandia Wetland Stabilization Project

The Sandia Canyon wetland is located within the AU below the primary developed Laboratory area in the upper watershed and approximately 100 yards above monitoring station E-123. A large head cut formed in the lower section of the wetland, resulting in increased sediment migration downcanyon. The wetland is an important historical sediment deposition area. The head cut in the lower section of the wetland was stabilized by constructing a three stepped grade-control structure that allow a grade transition from the current elevation of the wetland to the stream bank near stream gage E-123. The area behind the grade-control structure was backfilled and wetland vegetation to allow expansion of the wetland area. These measures have physically stabilize the wetland by reducing sediment and associated contaminant transport into the lower sections of the canyon.

The grade-control structure was designed to meet the following objectives:

- Provide and even grade to allow wetland expansion and further stabilization
- Be sufficiently impervious to prevent the draining of alluvial soils
- Facilitate nonchannelized flow
- Minimize erosion during large flow events
- Support wetland function under reduced effluent conditions

A 25-year, 2-hour storm event with a peak design flow of 500 cubic feet per second was used for the design of the grade-control structure as required by the Laboratory's design guidance. The primary goal was to reduce the stream velocity in the area of the grade control structure to less than 6 feet per second. Construction of the grade-control structures was completed in November 2013.

Construction of the grade-control structure was required based on the results of investigations conducted under the Order on Consent (Consent Order), which provides the time table and requirements for environmental cleanup of hazardous constituents for the Laboratory. Monitoring pursuant to Consent Order requirement will be conducted as follows:

- Surface water monitoring of base flows at gages upstream and downstream of wetland
- Storm water samples will be collected from gages upstream and downstream of wetland
- Vegetation monitoring will be conducted via semi-annual photo surveys
- A series of repeat cross sections will be established to document geomorphic changes

Suspended sediment concentrations have decreased significantly compared with pre- and post-GCS data immediately downgradient of the wetland at gaging station E123, presumably from eliminating headcutting at the terminus of the wetland and from trapping efficiency because of the dense vegetation within the wetland (6).

The project was permitted under Section 404 of the Clean Water Act - the U.S. Army Corp of Engineers (ACOE) Nation-Wide Permit #38 for Cleanup of Hazardous and Toxic Waste. The ACOE required compensatory mitigation and accepted DOE/LANS performance standards and monitoring plan to measure performance. Performance standards include:

- Vegetation in wetland disturbed area recovers to $\geq 60\%$ native species absolute cover
- Extent of wetland facultative and obligate vegetation west of grade control structure does not decrease below current wetland size (2.97 acres)
- Percent relative cover of wetland facultative and obligate vegetation within delineated wetland boundaries does not decline more than 15% from baseline in years following installation of grade control structure

Monitoring requirement includes:

- Photo documentation
- Vegetative species and cover qualification
- Extent of wetland vegetation
- Water level monitoring

2.3.2.2 Storm water Controls/Management from Developed Laboratory Areas

Controls within the LANL area primarily consist of several small detention ponds, riprap structures at various discharge locations, and a grade control structures within Sandia Canyon. The detention ponds capture runoff from adjacent buildings and surrounding impervious areas, and discharge flow through controlled outlet structures. These ponds are designed to manage runoff velocity to pre-development levels and also facilitate the settling and capture of sediment transported in storm water runoff. As an example, a bio detention pond is currently being constructed within LANL's primary administration area to address runoff from a large parking structure and an adjacent parking lot. The pond will minimize runoff velocity and is designed with a forebay to capture "first flush" sediments and manage site snow removal. This system will provide a first flush treatment before site runoff enters the existing storm drain infrastructure system.

Riprap is placed at various discharge locations to reduce runoff and minimize the potential for erosion within and adjacent to Sandia Canyon. For example, both surface runoff and flow collected in the storm drain infrastructure system from a significant portion of the LANL area discharge directly at the head of Sandia Canyon. A riprap structure and a small riprap basin have been installed at this discharge location

to manage these flows. The riprap reduces runoff velocity in the flows prior to discharge into Sandia Canyon.

Approximately 0.7 miles downstream from the head of Sandia Canyon, a grade control structure has been installed within an existing wetland. This wetland is an important historical sediment deposition area, as the highest concentrations of copper in the AU are located within the wetland reach of the canyon. A large head cut formed in the lower section of the wetland, resulting in increased sediment migration downcanyon. The grade control structure, consisting of a series sheetpile structures designed to reduce flow velocity and increase the width of flow within the watercourse, will stabilize the head cut by facilitating a grade transition from the current elevation of the wetland to the downstream channel. The area behind the sheetpile structures was backfilled and wetland vegetation is being established in these areas. A cascading drop pool constructed with rock at the downstream end of the grade control structures serves as a final energy dissipater for the water flow. By reducing flow velocity and enhancing the sustainability of the wetland, this grade control structure will stabilize existing soils and enhance future sediment deposition, thereby maintaining hydrologic and geochemical conditions that will minimize the migration of pollutants of concern including copper.

A Low Impact Development (LID) Master Plan has been developed and finalized. The LID Master Plan will guide and prioritize future development of LID projects at LANL. The LID Master Plan applies to developed areas across the Laboratory and focuses on identifying opportunities for storm water quality and hydrological improvements in the heavily urbanized areas of Technical Areas 03, 35 and 53. TA-03 primarily drains to Sandia, Mortandad, Two Mile and Los Alamos Canyons. The LID Master Plan is organized to allow the addition of LID projects for other technical areas as time and funds allow in the future.

The LID Master Plan identifies a number of LID projects within the Sandia AU. Under the SEP, 5 projects were designed and 3 were completed in 2019. These projects are designed and constructed with the specific goal of improved storm water management.

2.3.2.3 Sandia Canyon Storm Water Management Plan (SWMP)

LANL has completed development of a Storm Water Management Plan (SWMP). The complete SWMP is included in Appendix 2. The SWMP will be managed through the Environmental Protection and Compliance Division (EPC-CP) with collaboration with personnel from Planning, Utilities and Project Management. The Plan is based on the municipal separate storm water sewer system (MS4) Phase II Storm Water Program that requires permittees develop measureable goals to assess the effectiveness of storm water controls that address the six minimum control measures defined in the regulations.

On March 6, 2015 EPA issued their preliminary determination that discharges of storm water from MS4s on Laboratory property and urban portions of Los Alamos County result in or have the potential to result in exceedances of state water quality standards including impairment of designated uses, or other significant water quality impacts such as habitat and biological impacts. The preliminary designation applies to MS4s within the Laboratory, including the Department of Energy and LANS located within Los Alamos County. In the interim, while the MS4 is developed and finalized, the SWMP will serve as a bridge and key to management of storm water flow in Sandia Canyon.

The initial scope of the SWMP will focus on stormwater discharges into Sandia Canyon. The maps in Appendix 1 show the Sandia Canyon watershed within LANL, the upper and lower assessment units (AUs) and proposed monitoring locations. S-01 and S-02 are the primary storm drain outfalls from TA-03 and will be used as run-on sampling locations for the upper AU. Gage station location E-124 will be used as the runoff sampling location for the upper AU and one of the run-on sampling locations for the lower

AU. Sampling locations S-03, S-04 and S-05 will be used as TA-53 run-on sampling locations for the lower AU. Sampling location S-06 is located just upstream from the Lower Sandia Grade Control Structure and will be used as the runoff sampling location for the lower AU.

In addition, a Sampling and Analysis Plan (SAP) has been prepared that identifies analytical suites and sampling frequencies for each monitoring location. Table 1 is a summary of the SAP. We plan to collect four samples a year at each location. All sample analytical results will be posted on Intellus New Mexico.

2.3.2.4 Storm water Controls/Management from Urban Townsite in Upper Watershed

Los Alamos County property discharging to Sandia Canyon is comprised of approximately 23 acres at the former municipal landfill site and 6 acres within the Royal Crest housing area. The landfill site has a soil cap and operates under a closure plan. At the east end of the site, the ground cover consists of sparse native perennial vegetation and approximately 3.5 acres of compacted basecourse housing a solar array. The west side of the site is primarily a flat area of compacted soil with light industrial activity. With the exception of a small area at the east end of the landfill site, the slopes along Sandia Canyon are stabilized with native perennial vegetation.

Within the Los Alamos County landfill site four rock lined open channel structures collect and convey runoff to Sandia Canyon. Three of the four structures discharge at locations upstream of the grade control structure. Runoff in remaining areas is conveyed to the canyon in multiple locations via sheetflow or minor concentrated flow. The six acre site within the Royal Crest housing area has a system of storm drains that collect runoff from streets and surrounding structures and discharges runoff through a single culvert.

Controls within the Los Alamos County area consist primarily of maintenance of the landfill cap, compliance with the landfill closure plan, and erosion control structures on the east end of the landfill site. Previously, a significant portion of the runoff from the eastern half of the landfill site, from a single drainage area, was conveyed in rock rundowns to a single discharge location due north of the grade control structure. Significant erosion of the canyon slope at this discharge location was occurring, resulting in discharges of sediment into Sandia Canyon. Los Alamos County has initiated work to subdivide the current single drainage area on the east end into two basins, resulting in two new discharge locations. New riprap channels will convey runoff to small basins at these discharge points, facilitating additional reduction of runoff velocity prior to discharge. Creating new discharge locations also bypasses the existing eroded slope, minimizing sediment transport into Sandia Canyon.

In addition to the drainage modification on the landfill site, a large retention structure has been constructed within Sandia Canyon, on the north side of the grade control structure, to capture runoff from approximately five acres of the landfill the landfill. This structure is located within the area of the eroded slope and will retain runoff from the eroded area as well as the concentrated flow from one of the new discharge points. The structure has a controlled outlet and is designed to retain runoff from a 100-year storm event. For events of smaller magnitude this structure will prevent runoff from the landfill from reaching the water course within Sandia Canyon.

2.4 Description of Requirements under Which Pollution Controls Will Be Implemented

The demonstration should describe the basis for concluding that the pollution controls are requirements or why other types of controls already in place may be sufficient.

The programs and permits described above are based on specific requirements contained in the federal CWA or New Mexico State law. NPDES pollution controls and regulatory requirements described are specifically designed with the objective of meeting WQS at the point of compliance. Permit conditions and requirements are tailored specifically for discharges to impaired waters. The Consent Order (3) is the principal regulatory driver for the Laboratory's environmental restoration programs and requires the investigation and, if necessary, remediation of SWMUs and AOCs located on Laboratory property.

3. ESTIMATE OR PROJECTION OF TIME WHEN WQS WILL BE MET

The demonstration should provide a time estimate by which the controls will result in WQS attainment, including an explanation of the basis for the conclusion.

For the pollutants identified, the controls in place are projected to provide measurable decreases in concentrations within 4 years. The time-frame will allow implementation of control measures and confirmation monitoring against water-quality criteria targets. The time frame also facilitates coordination with listing cycles. Where the pollutant has no known anthropogenic source or where significant contributions originate from natural background sources, site-specific water quality criteria may be warranted, as provided for in 20.6.4.10 NMAC (2).

4. SCHEDULE FOR IMPLEMENTING POLLUTION CONTROLS

The demonstration should describe, as appropriate, the schedule by which the pollution controls will be implemented and/or which controls are already in place.

The Permits, projects and controls listed below are in effect. The NPDES permits or regulatory requirements set the schedule for implementation of pollution controls. Each permit or regulatory requirement imposes some combination of effluent limits, compliance schedules, monitoring requirements, enforcement provisions and compliance periods. The Sandia Wetland Stabilization Project is subject to requirements, including monitoring and reporting, under the Consent Order. The SEP and LID projects are completed and subject to maintenance, monitoring and inspection by NMED. LANL's SWMP will remain in effect until the MS4 is established and in effect.

- LANL Storm Water Monitoring Plan (SWMP)
- NPDES Industrial Outfall Permit (IPSP)
- NPDES Storm Water Individual Permit (IP)
- NPDES Storm Water MSGP
- Sandia Wetland Stabilization Project
- SEP Grade Controls and LID Projects
- NPDES – Construction General Permit

5. MONITORING PLAN TO TRACK EFFECTIVENESS OF POLLUTION CONTROLS

The demonstration should include a description of, and schedule for, monitoring milestones to track effectiveness of the pollution controls. The demonstration should describe water quality monitoring that will be performed to determine the combined effectiveness of the pollution controls on ambient water quality.

To track the effectiveness of the 4b Demonstration, the watershed-based gage stations E124 and SWMP-S-06 will be monitored as described in section 2.1.3 and Table 14.

Additionally, E125 is located at the end of AU NM-128.A_11 and is part of the Laboratory's Environmental Surveillance Program (ESP). E124 is also part of the ESP. The ESP has sampled and analyzed sediments and surface water in Sandia Canyon since approximately 1970. This work, reported in annual Environmental Reports, supports the evaluation of long-term trends in contamination in different media and understanding of the role of storm water transport.

In addition to ESP, and SWMP surface water monitoring and assessments at the Laboratory occur at several levels.

1. The annual Interim Facility-Wide Groundwater Monitoring Plan (IFGMP) includes monitoring of base flow or persistent surface water in main drainages and some tributary channels for an extensive list of constituents.
2. Sampling of snowmelt runoff and storm water at gaging stations occurred as part of the Laboratory's environmental surveillance activities.
3. Storm water sampling at locations and frequencies specified in the IP.
4. Ongoing storm water sampling at MSGP regulated facilities per the requirements of and at frequencies specified in the MSGP.
5. On-going monitoring to determine compliance with Industrial Outfall permit limitations.
6. Continuation of storm water sampling as part of a special study to evaluate background and baseline concentrations of PCBs, metals, and gross-alpha radiation in and near the Laboratory.

The demonstration should identify how and when assessment results from the monitoring will be reported to the public and USEPA.

The Laboratory's environmental data records are available on a single cloud-based, web-accessible system to the public. The cloud-based data system houses more than 12 million records, including 27,000 locations and 250,000 samples. All sampling data used in the 4b Demonstration are available to the public. The sampling locations described in the SWMP will also be placed in the cloud-based system. The publicly available view of the database requires no feeds or transformations of the data. The site can be accessed at <http://www.intellusnmdata.com/>.

Information on Environmental Surveillance activities is reported annually in the Laboratory's Annual Environmental Report. The most recent report, issued in December 2019, is for the 2018 calendar year (5). The report can be accessed at <http://www.lanl.gov/community-environment/environmental-stewardship/environmental-report.php>.

6. COMMITMENT TO REVISE POLLUTION CONTROLS, AS NECESSARY

The demonstration should provide a statement with a commitment to revise the pollution controls, as necessary, if progress towards meeting water quality standards is not being shown.

DOE/Triad will comply with permit conditions and limitations. In the event that progress towards meeting water-quality targets are not achieved, changes in permit and regulatory requirements may be sought. This provided it can be demonstrated that changes will result in compliance with water quality targets. NPDES permits provide an array of procedures and mechanisms to measure and ensure progress is achieved, including (1) schedules of compliance, (2) compliance status reports, (3) reopener clauses, (4) inspections, and (5) reporting requirements. EPA may change permit limitations and conditions. Under section 401 of the CWA, NMED certifies that permitted activities will comply with New Mexico WQS. As previously stated the SWMP has been developed for the LANL and is in effect. The SWMP includes increased controls to manage storm water runoff from urban and developed areas at the Laboratory. This plan will aid in further identifying storm water runoff locations, quantifying runoff volumes, identifying potential pollutant sources affecting water quality, and assisting in the identification of appropriate Best Management Practices and control measures for both current and future sites and activities.

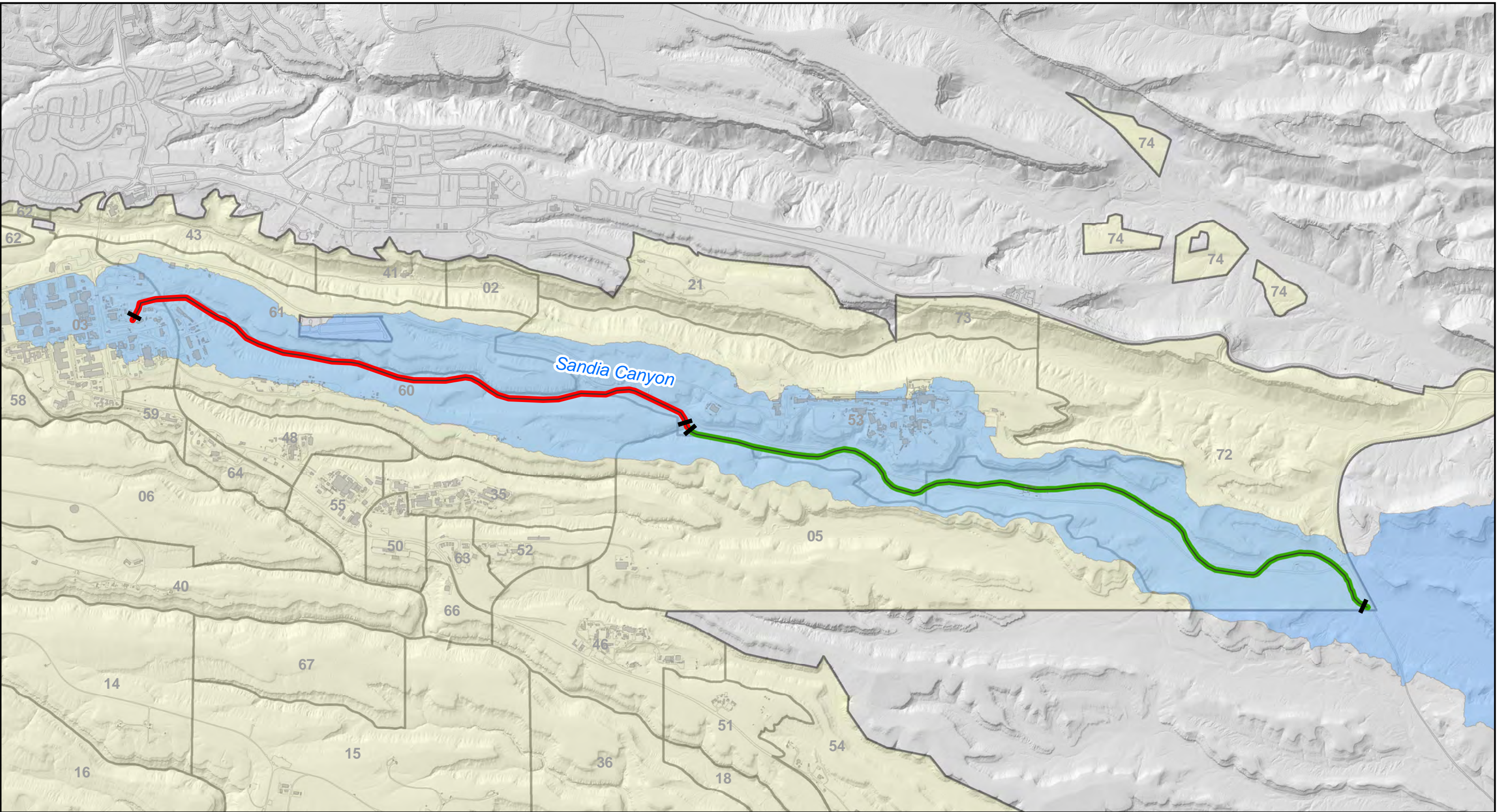
7. REFERENCES

The following list includes all documents cited in this report. They can be accessed at the following links: Electronic Public Reading Room, http://www.lanl.gov/community-environment/environmental-stewardship/public-reading-room.php#.Un0T_3eK7Dt.

1. NMED (under development). State of NM 2018-2020 Clean Water Act § 303(d)/§ 305 (b) Integrated List.
2. New Mexico Water Quality Control Commission (NMWQCC). State of New Mexico Standards of Interstate and Intrastate Surface Waters, 20.6.4 NMAC.
3. NMED (2005 and 2012 revision). Compliance Order on Consent – The United States Department of Energy and the Regents of the University of California
4. LANL (2013). Background Metals Concentrations and Radioactivity in Storm Water on the Pajarito Plateau, Northern New Mexico. Los Alamos National Laboratory document LA-UR-13-22841, Los Alamos, New Mexico.
5. LANL (December 2019), Los Alamos National Laboratory Environmental Report 2018, Los Alamos National Laboratory document LA-UR-19-28950, Los Alamos, New Mexico.
6. LANL (2018). 2017 Sandia Wetland Performance Report

Appendix 1

Category 4B MAPS



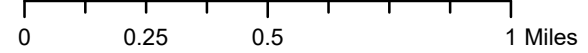
4B Demonstration Sandia Canyon Assessment Units

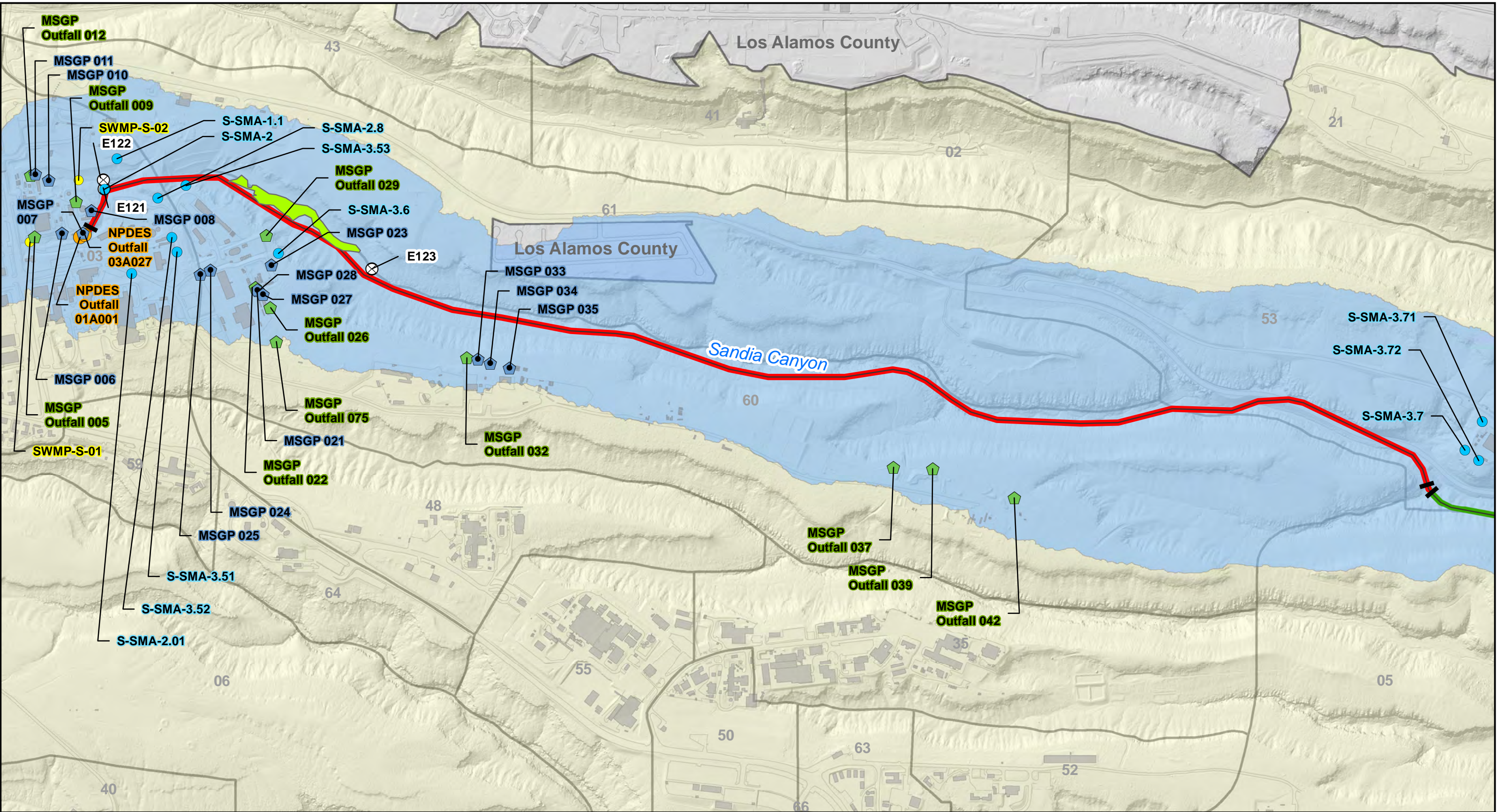
- Assessment Unit demarcation
- Sandia Canyon Watershed
- Sandia Canyon (NM-9000.A_047)
- LANL Structure
- Sandia Canyon (NM-128.A_11)
- Technical Area
- Paved Road
- LANL

Map #19-227-04_4B_Overview
 Created by Ben Sutter, IFPROG.
 November 26, 2019.

This map was created for work processes associated with EPC. All other uses for this map should be confirmed with LANL EPC-CP staff.

State Plane Coordinate System
 New Mexico, Central Zone, US Feet
 NAD 1983 Datum





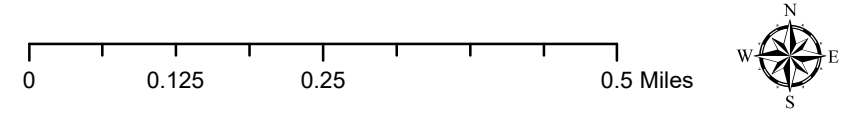
4B Demonstration Sandia Canyon Assessment Units (Upper Sandia)

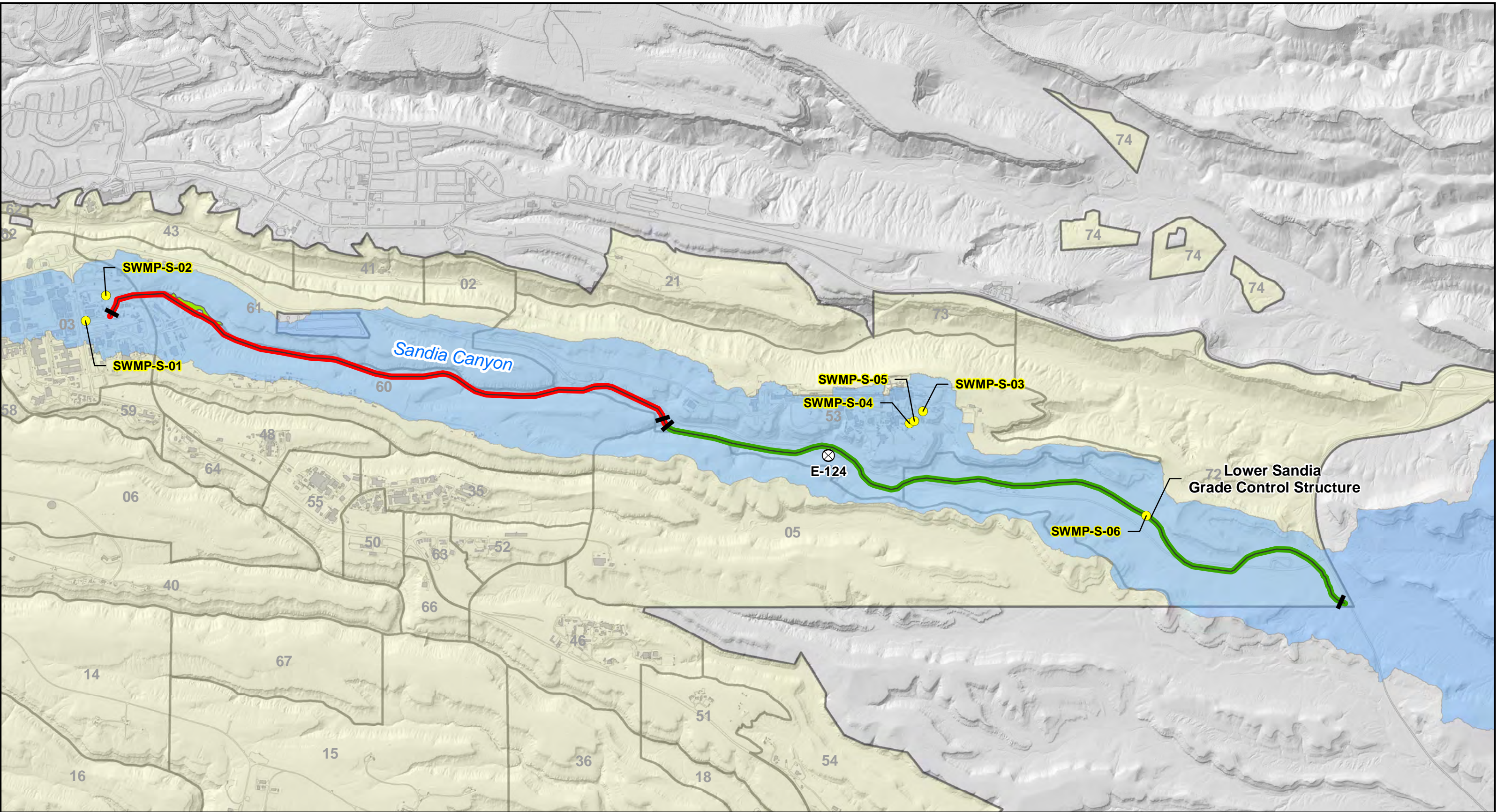
- SWMP Sampler
- IP Sampler
- Active Gage
- ◆ SIO
- ◆ Monitoring Outfall
- NPDES Outfall
- Assessment Unit demarcation
- Sandia Canyon (NM-9000.A_047)
- Sandia Canyon (NM-128.A_11)
- Paved Road
- Sandia Canyon Watershed
- Wetland and Upper Sandia Canyon Grade Control Structure
- LANL Structure
- Technical Area
- LANL

Map #19-227-02_Upper_Sandia
 Created by Ben Sutter, IFPROG.
 November 26, 2019.

This map was created for work processes associated with EPC. All other uses for this map should be confirmed with LANL EPC-CP staff.

State Plane Coordinate System
 New Mexico, Central Zone, US Feet
 NAD 1983 Datum





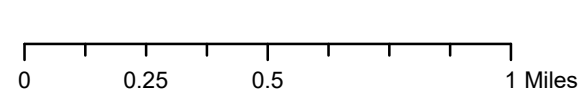
Sandia Stormwater Management Plan

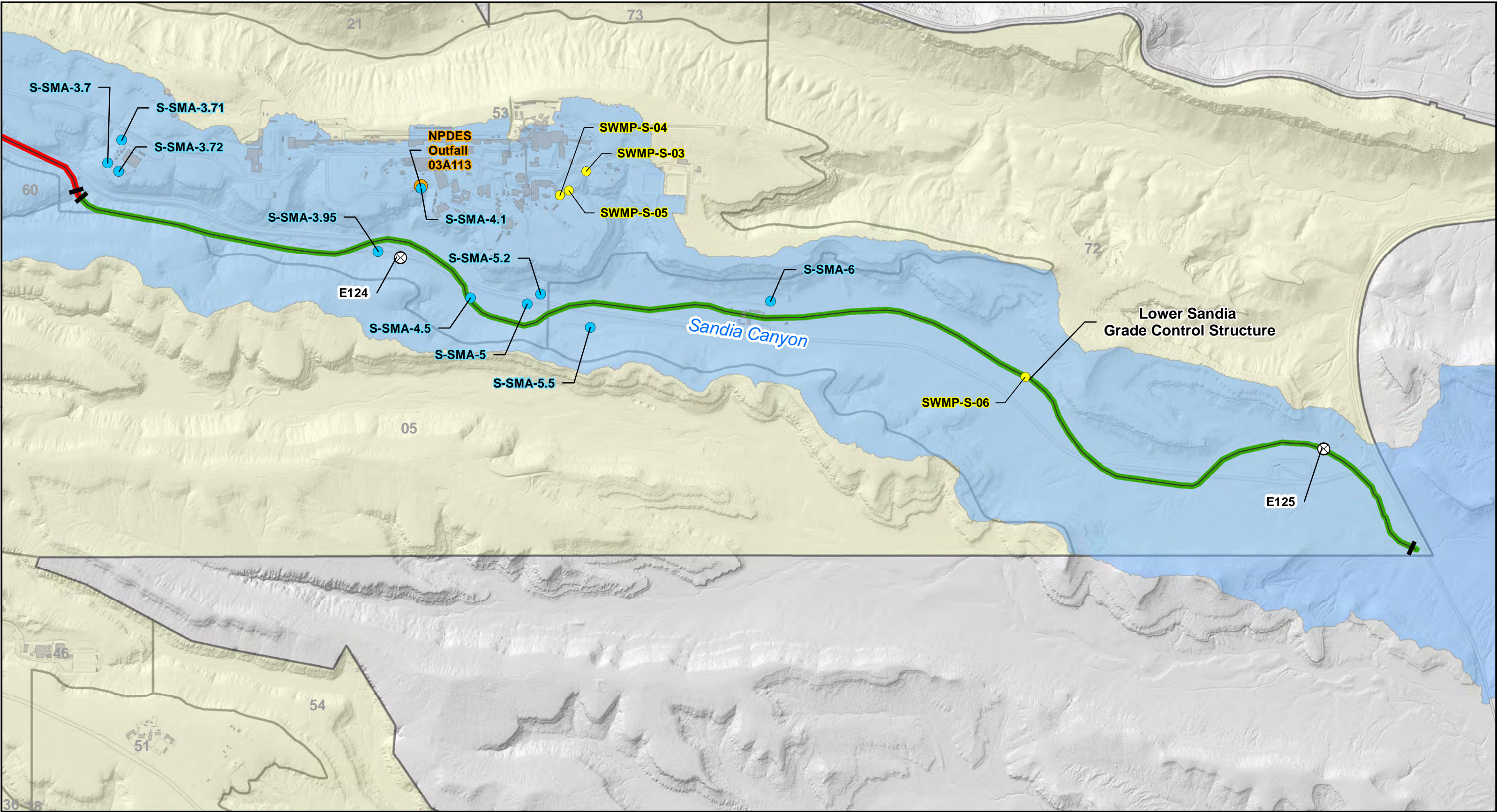
- SWMP Sampler
- ⊗ Active Gage
- Sandia Canyon (NM-9000.A_047)
- Sandia Canyon (NM-128.A_11)
- Paved Road
- Wetland and Upper Sandia Grade Control Structure
- Sandia Canyon Watershed
- LANL Structure
- LANL
- Technical Area

Map #19-227-01_Stormwater_Management_Plan
 Created by Ben Sutter, IFPROG.
 November 26, 2019.

This map was created for work processes associated with EPC. All other uses for this map should be confirmed with LANL EPC-CP staff.

State Plane Coordinate System
 New Mexico, Central Zone, US Feet
 NAD 1983 Datum





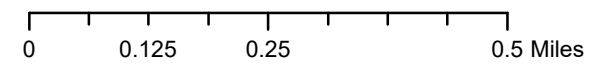
4B Demonstration Sandia Canyon Assessment Units (Lower Sandia)

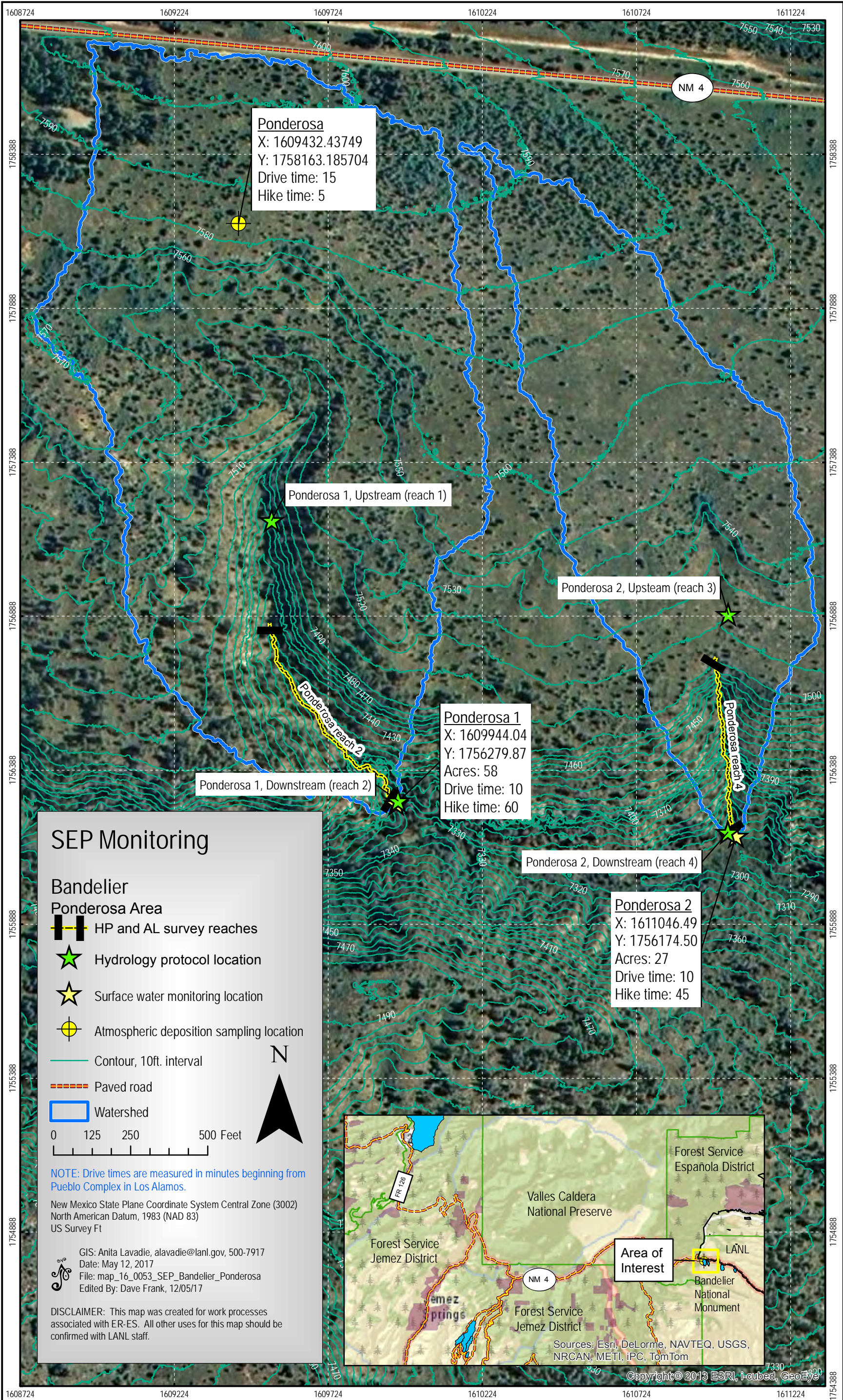
- SWMP Sampler
- IP Sampler
- ⊗ Active Gage
- NPDES Outfall
- Assessment Unit demarcation
- Sandia Canyon (NM-9000.A_047)
- Sandia Canyon (NM-128.A_11)
- Paved Road
- Sandia Canyon Watershed
- LANL Structure
- Technical Area
- LANL

Map #19-227-02_Lower_Sandia
 Created by Ben Sutter, IFPROG.
 November 26, 2019.

This map was created for work processes associated with EPC. All other uses for this map should be confirmed with LANL EPC-CP staff.

State Plane Coordinate System
 New Mexico, Central Zone, US Feet
 NAD 1983 Datum





Ponderosa
 X: 1609432.43749
 Y: 1758163.185704
 Drive time: 15
 Hike time: 5

Ponderosa 1, Upstream (reach 1)

Ponderosa 2, Upstream (reach 3)

Ponderosa 1
 X: 1609944.04
 Y: 1756279.87
 Acres: 58
 Drive time: 10
 Hike time: 60

Ponderosa 1, Downstream (reach 2)

Ponderosa reach 4

Ponderosa 2, Downstream (reach 4)

Ponderosa 2
 X: 1611046.49
 Y: 1756174.50
 Acres: 27
 Drive time: 10
 Hike time: 45

SEP Monitoring

Bandelier Ponderosa Area

- HP and AL survey reaches
- Hydrology protocol location
- Surface water monitoring location
- Atmospheric deposition sampling location
- Contour, 10ft. interval
- Paved road
- Watershed

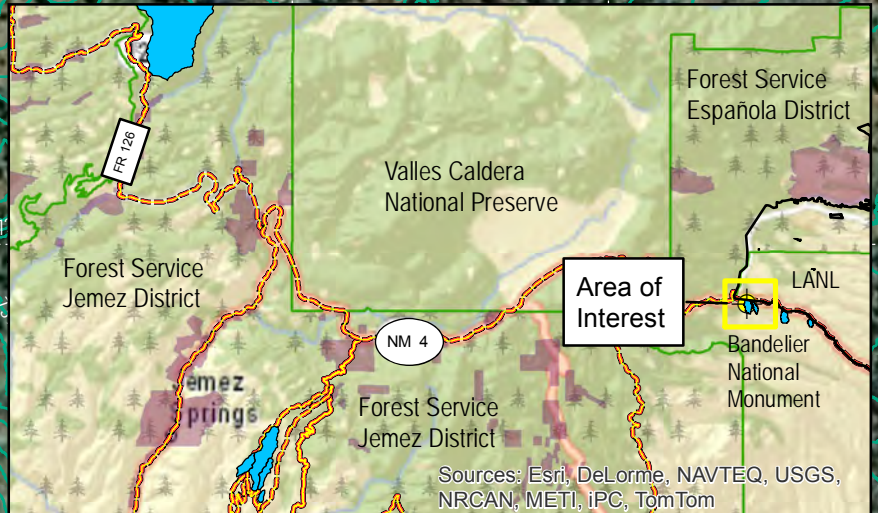
0 125 250 500 Feet

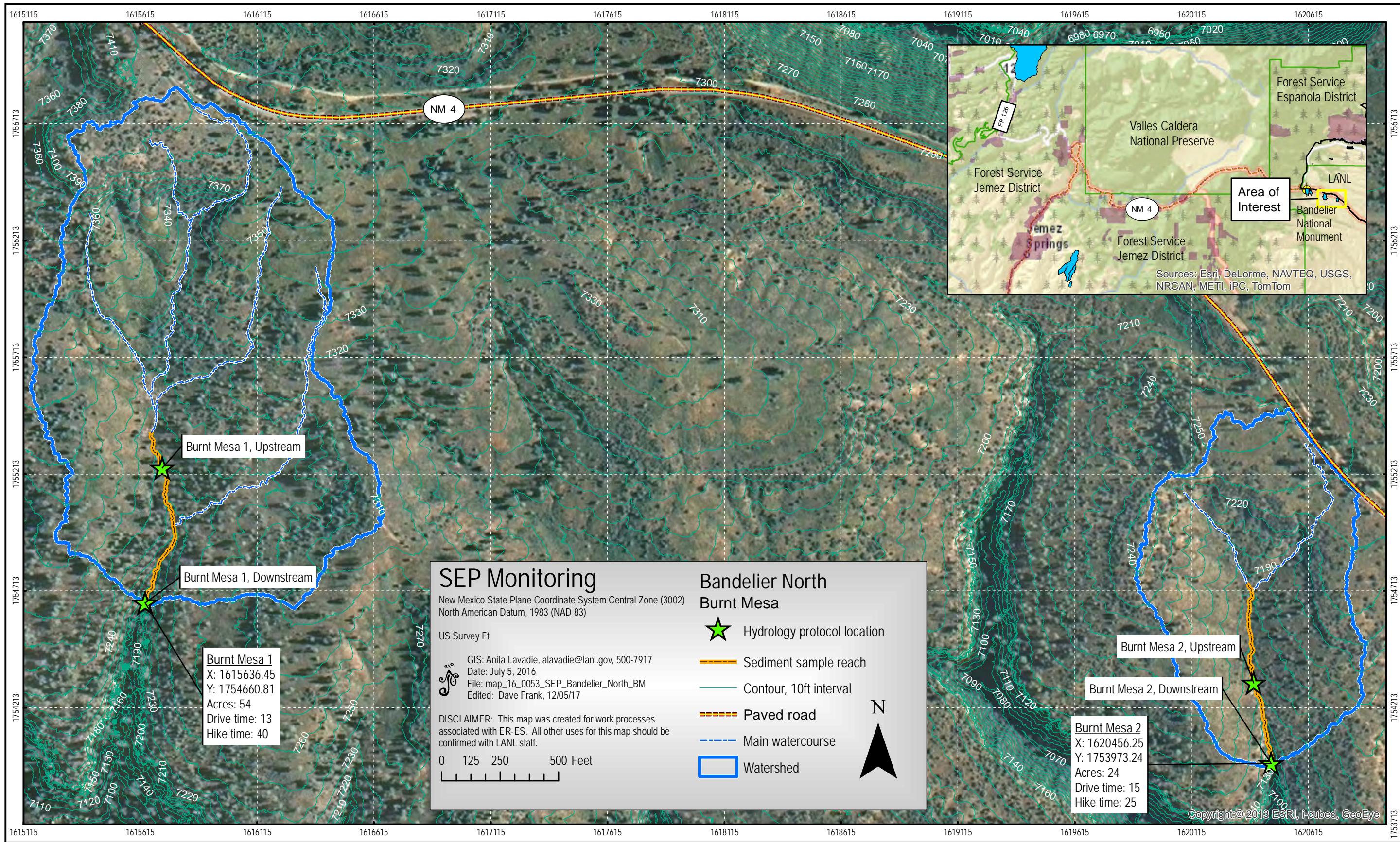
NOTE: Drive times are measured in minutes beginning from Pueblo Complex in Los Alamos.

New Mexico State Plane Coordinate System Central Zone (3002)
 North American Datum, 1983 (NAD 83)
 US Survey Ft

GIS: Anita Lavadie, alavadie@lanl.gov, 500-7917
 Date: May 12, 2017
 File: map_16_0053_SEP_Bandelier_Ponderosa
 Edited By: Dave Frank, 12/05/17

DISCLAIMER: This map was created for work processes associated with ER-ES. All other uses for this map should be confirmed with LANL staff.





Burnt Mesa 1, Upstream

Burnt Mesa 1, Downstream

Burnt Mesa 1
 X: 1615636.45
 Y: 1754660.81
 Acres: 54
 Drive time: 13
 Hike time: 40

Burnt Mesa 2, Upstream

Burnt Mesa 2, Downstream

Burnt Mesa 2
 X: 1620456.25
 Y: 1753973.24
 Acres: 24
 Drive time: 15
 Hike time: 25

SEP Monitoring

New Mexico State Plane Coordinate System Central Zone (3002)
 North American Datum, 1983 (NAD 83)

US Survey Ft

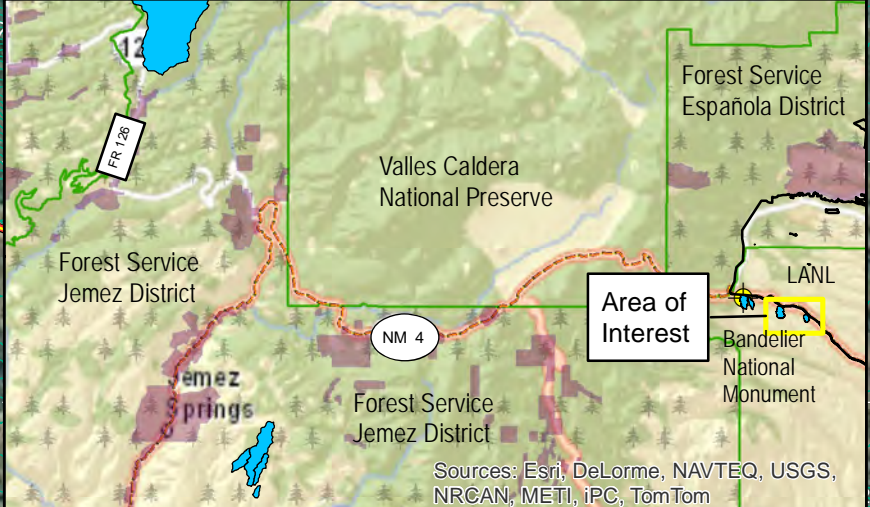
GIS: Anita Lavadie, alavadie@lanl.gov, 500-7917
 Date: July 5, 2016
 File: map_16_0053_SEP_Bandelier_North_BM
 Edited: Dave Frank, 12/05/17

DISCLAIMER: This map was created for work processes associated with ER-ES. All other uses for this map should be confirmed with LANL staff.

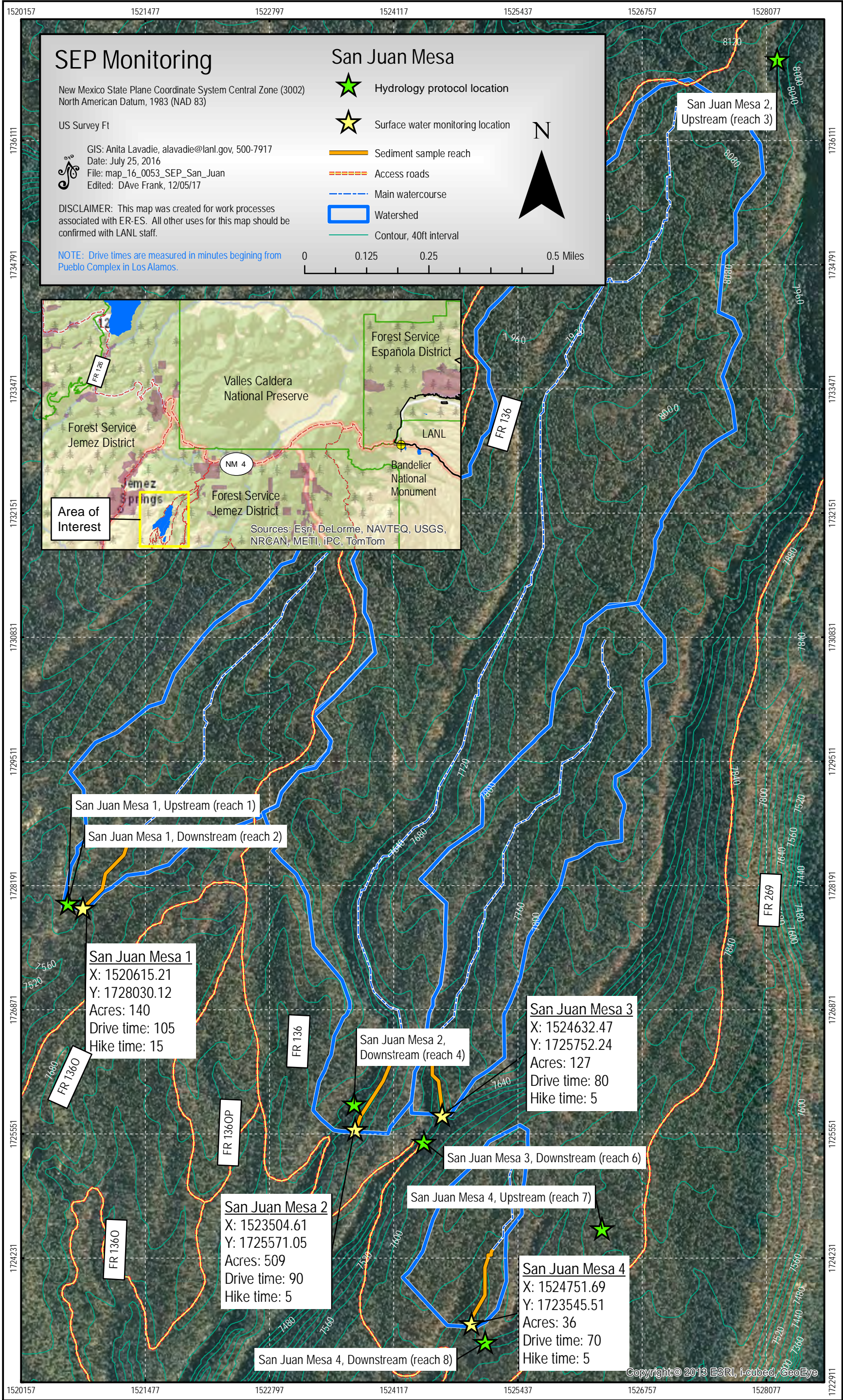


Bandelier North Burnt Mesa

- Hydrology protocol location
- Sediment sample reach
- Contour, 10ft interval
- Paved road
- Main watercourse
- Watershed



Sources: Esri, DeLorme, NAVTEQ, USGS, NRCAN, METI, iPC, TomTom



SEP Monitoring

New Mexico State Plane Coordinate System Central Zone (3002)
North American Datum, 1983 (NAD 83)

US Survey Ft

GIS: Anita Lavadie, alavadie@lanl.gov, 500-7917
Date: July 25, 2016
File: map_16_0053_SEP_San_Juan
Edited: DAve Frank, 12/05/17

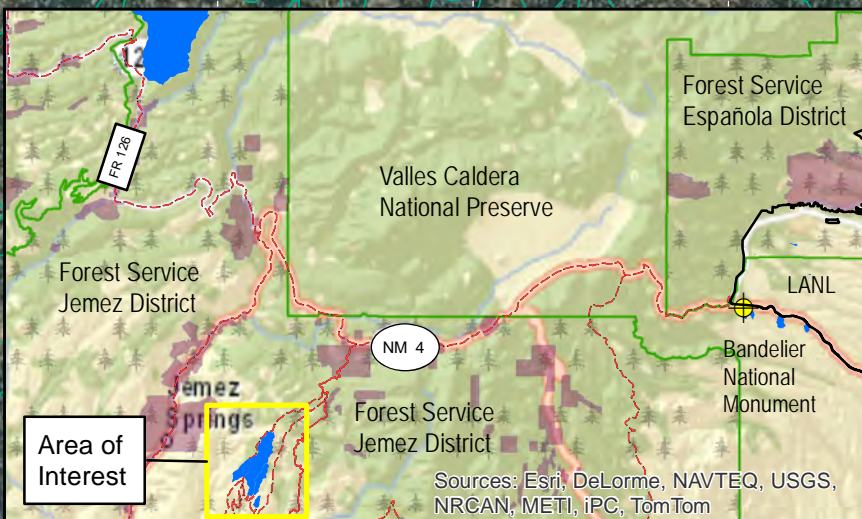
DISCLAIMER: This map was created for work processes associated with ER-ES. All other uses for this map should be confirmed with LANL staff.

NOTE: Drive times are measured in minutes beginning from Pueblo Complex in Los Alamos.

San Juan Mesa

- ★ Hydrology protocol location
- ★ Surface water monitoring location
- Sediment sample reach
- Access roads
- Main watercourse
- Watershed
- Contour, 40ft interval

0 0.125 0.25 0.5 Miles



San Juan Mesa 1, Upstream (reach 1)

San Juan Mesa 1, Downstream (reach 2)

San Juan Mesa 1
X: 1520615.21
Y: 1728030.12
Acres: 140
Drive time: 105
Hike time: 15

San Juan Mesa 2, Downstream (reach 4)

San Juan Mesa 2
X: 1523504.61
Y: 1725571.05
Acres: 509
Drive time: 90
Hike time: 5

San Juan Mesa 3
X: 1524632.47
Y: 1725752.24
Acres: 127
Drive time: 80
Hike time: 5

San Juan Mesa 3, Downstream (reach 6)

San Juan Mesa 4, Upstream (reach 7)

San Juan Mesa 4
X: 1524751.69
Y: 1723545.51
Acres: 36
Drive time: 70
Hike time: 5

San Juan Mesa 4, Downstream (reach 8)

Appendix 2

Storm Water Management Plan

Sandia Canyon Storm Water Management Plan

(LA-UR-20-20421)

1. Introduction

The Sandia Canyon Storm Water Management Plan (SWMP) Program will be managed through EPC-CP with collaboration with personnel from Planning, UI, and Project Management. The MS4 Phase II Storm Water Program requires that permittees develop measurable goals to assess the effectiveness of storm water controls that address the six minimum control measures defined in the regulations. Although this SWMP is not directly in support of an MS4 permit, we feel it will be beneficial to use this template in anticipation of an MS4 permit for the Laboratory. Section 3 outlines the details of the monitoring program.

2. Minimum Control Measures

The standard MS4 Six Minimum Control Measures have been modified to better represent a LANL-internal approach. Planned activities and measurable goals for each control measure are outlined and described below. At this time LANL has not dedicated additional funding for these activities. Therefore, we have focused on identifying currently-funded activities in addition to some planned activities that support the goals of the SWMP. We anticipate it will require up to 5 years to implement all planned activities in support of the SWMP.

A. LANL Workforce Education and Outreach

An informed and knowledgeable workforce is crucial to the success of our program. The LANL SWMP program will need to communicate program goals, processes and progress to the LANL workforce. Activities and measurable goals for this Control Measure include:

- I. Outreach to Lab personnel via website, presentations, newsletters and email. At a minimum we will establish a link to our SWMP from the Environmental Protection Division website.
- II. Training for LANL personnel. We will investigate the possibility to incorporate storm water management goals and awareness into the General Employee Training and Environmental Management System curricula.
- III. Both the Annual Site Environmental Report and the Site Wide Environmental Impact Statement Yearbook will be used to provide information on Storm Water Program activities. The reports will be available online or through the Publications Reading Room in Pojoaque.
- IV. Informational signs will be used at locations such as drop inlets and LID stormwater controls to inform and remind the workforce about storm water management features or issues in the field.

- V. We will work with the Bradbury Museum in Los Alamos to develop a display communicating the issues, goals and progress of the Storm Water Management Program.
- VI. We will participate in workforce outreach opportunities such as the annual Worker Safety and Security Team Festival or Earth Day Celebration.

B. LANL Workforce Participation/Involvement

Our workforce can provide valuable input and assistance in developing and implementing the SWMP. Workforce participation and involvement in the development and implementation of the SWMP will be encouraged and facilitated. Activities and measurable goals for this Control Measure include:

- I. Outreach and feedback from Lab personnel via website, presentations, newsletters and email. At a minimum we will establish a link to our SWMP from the Environmental Protection Division website and include links for questions and comments.
- II. Utilize the Stormwater@lanl.gov email address to solicit feedback on the Storm Water Management Program.
- III. We could develop employee surveys to evaluate worker knowledge and interest in storm water management.
- IV. We will co-sponsor and/or participate in the annual Garbage Grab event sponsored by the LANL Pollution Prevention Program.
- V. LANL will investigate the practicality of developing an Adopt-A-LID type program to facilitate workforce awareness and involvement in storm water management.

C. Illicit Discharge Detection and Elimination

Stormwater and certain authorized types of uncontaminated non-stormwater are the only allowable non-permitted discharges from LANL property. Illegal dumping and storm drain connections can result in illicit discharges of non-stormwater wastes like car oil and sanitary waste. The LANL SWMP will include a program to detect and eliminate illicit discharges. Activities and measurable goals for this Control Measure include:

- I. The Spill Prevention, Control, and Countermeasure (SPCC) Program ensures current pollution prevention and emergency response controls are in place and can be implemented in the event of an accidental release at specific oil containing facilities.
- II. The LANL Spill Response Program provides immediate mitigation and timely notification of appropriate regulatory organizations in the event of a spill or unplanned discharge that has or may affect the environment
- III. ChemDB is the LANL institutional chemical inventory database used to manage potentially hazardous chemicals and assure proper storage and disposal practices.
- IV. The National Pollutant Discharge Elimination System (NPDES) Multi-Sector General Permit for Storm Water Discharges associated with Industrial Activities (MSGP) is a

general permit (not LANL-specific) that regulates storm water discharges from specific industrial activities and their associated facilities. Triad National Security, LLC (Triad) manages 8 active facilities in 6 industrial sectors for the Laboratory, including a steam electric generating plant, an asphalt batch plant, metal fabrication, warehousing, heavy equipment maintenance, material recycling, and timber products, and 57 no-exposure facilities. Seven of these active facilities are located within the Sandia Canyon watershed. The MSGP provides specific conditions for permit authorization, such as implementation of control measures, development of storm water pollution prevention plans (SWPPPs), inspection requirements, monitoring of storm water discharges at all active facilities, compliance with numeric and non-numeric effluent limits, corrective actions, and compliance with biological and cultural resource protection laws.

- V. The Deployed Environment, Safety and Health Division provides ESH support throughout the Laboratory via trained Deployed Environmental Professionals that work with EPC-CP and facility personnel.
- VI. LANL has a robust and well established NPDES Construction General Permit compliance program managed by EPC-CP. All projects that disturb ≥ 1 acre or are part of a common plan of development, are required to develop a Storm Water Pollution Prevention Plan (SWPPP) that includes storm water controls and an inspection schedule. LANL is a permittee or co-permittee on all LANL projects and EPC-CP writes the SWPPPs and conducts the training and all inspections. EPC-CP conducts on average, over 600 SWPPP inspections a year.
- VII. All subcontracts for construction work at LANL contain language that explicitly describes all storm water compliance requirements, including CGP and EISA requirements.

D. Construction Site Runoff Control

Management of storm water, sediments and potential pollutants during construction activities is essential for a successful storm water management program. Potential activities and measurable goals for this Control Measure includes:

- I. The Laboratory has an Integrated Review Tool (IRT) to review projects for issues and requirements. All projects submitted to the IRT are reviewed for compliance with the CGP and EISA as well as best management practices.
- II. Storm Water Compliance personnel participate in 30, 60 and 90% project design reviews prior to project construction to assure compliance with CGP and EISA requirements. LANL uses an automated online Design Review System to manage the review process.
- III. LANL has a robust and well established NPDES Construction General Permit compliance program managed by EPC-CP. All projects that disturb ≥ 1 acre or are part of a common plan of development, are required to develop a Storm Water Pollution Prevention Plan (SWPPP) that includes storm water controls and an inspection schedule. LANL is a permittee or co-permittee on all LANL projects and EPC-CP writes the SWPPPs and conducts the training and all inspections. EPC-CP conducts on average, over 600 SWPPP inspections a year.

- IV. Required pre-construction project-specific SWPPP training is provided by EPC-CP for all CGP projects and informs construction workers of the storm water controls and requirements in the project SWPPP.
- V. The Deployed Environment, Safety and Health Division provides ESH support throughout the Laboratory via trained Deployed Environmental Professionals that work with EPC-CP and facility personnel.
- VI. EPC-CP has produced a Best Management Practices Manual which provides information on types of BMPs and BMP installation. The BMP manual is available on line and through a link from the LANL online Engineering Standards Manual.
- VII. Construction-related wastes and appropriate waste disposal practices are identified through the LANL Waste Compliance and Tracking System process. Each project is assigned a Waste Management Coordinator to assist project personnel with the process.

E. Post-Construction Runoff Control

Managing stormwater after construction activities end is a key part of the SWMP. The LANL SWMP will include a program to reduce pollutants from new development and redevelopment projects that disturb $\geq 5,000$ ft² of land. Activities and measurable goals for this Control Measure include:

- I. The Laboratory has an Integrated Review Tool (IRT) to review projects for issues and requirements. All projects submitted to the IRT are reviewed for compliance with the CGP and EISA as well as best management practices.
- II. Storm Water Compliance personnel participate in 30, 60 and 90% project design reviews prior to construction to assure compliance with CGP and EISA requirements. LANL uses an automated online Design Review System to manage the review process.
- III. LANL has a relatively new but effective EISA 438 compliance program. All development or re-development projects over 5,000 ft² are required to use LID to provide detention for the 95th percentile storm.
- IV. The NPDES Construction General Permit requires permanent controls to manage the 2-yr, 24-hr storm to pre-development discharge rates. EPC-CP assists in the design and installation of required controls.
- V. The LANL LID Master Plan and LID Standards documents provide information on LID construction and maintenance information and options for LID throughout developed areas of the Laboratory. Existing buildings and facilities will be retrofitted with LID as funding is available.
- VI. We are revising of the Engineering Standards Manual to streamline CGP and EISA storm water requirements for LANL project managers.
- VII. The Federal Insecticide, Fungicide, and Rodenticide Act (FIFRA) regulates the distribution, sale, and use of pesticides (chemicals that destroy plant, fungal, or animal pests). The New Mexico Pesticide Control Act requires that LANL license and certify pesticide workers, inspect equipment and maintain a database that tracks application,

storage, and disposal of pesticides. LANL compliance with FIFRA is managed in accordance with our National Pollutant Discharge Elimination System Pesticide General Permit. FIFRA activities are reported in the Annual Site Environmental Report.

F. Pollution Prevention/Good Housekeeping

Minimizing the potential pathways for contaminants carried in runoff is a key way to control pollutant discharges. The LANL SWMP will include a program to prevent or reduce pollutant runoff from municipal operations into the storm drain system. Activities and measurable goals for this Control Measure include:

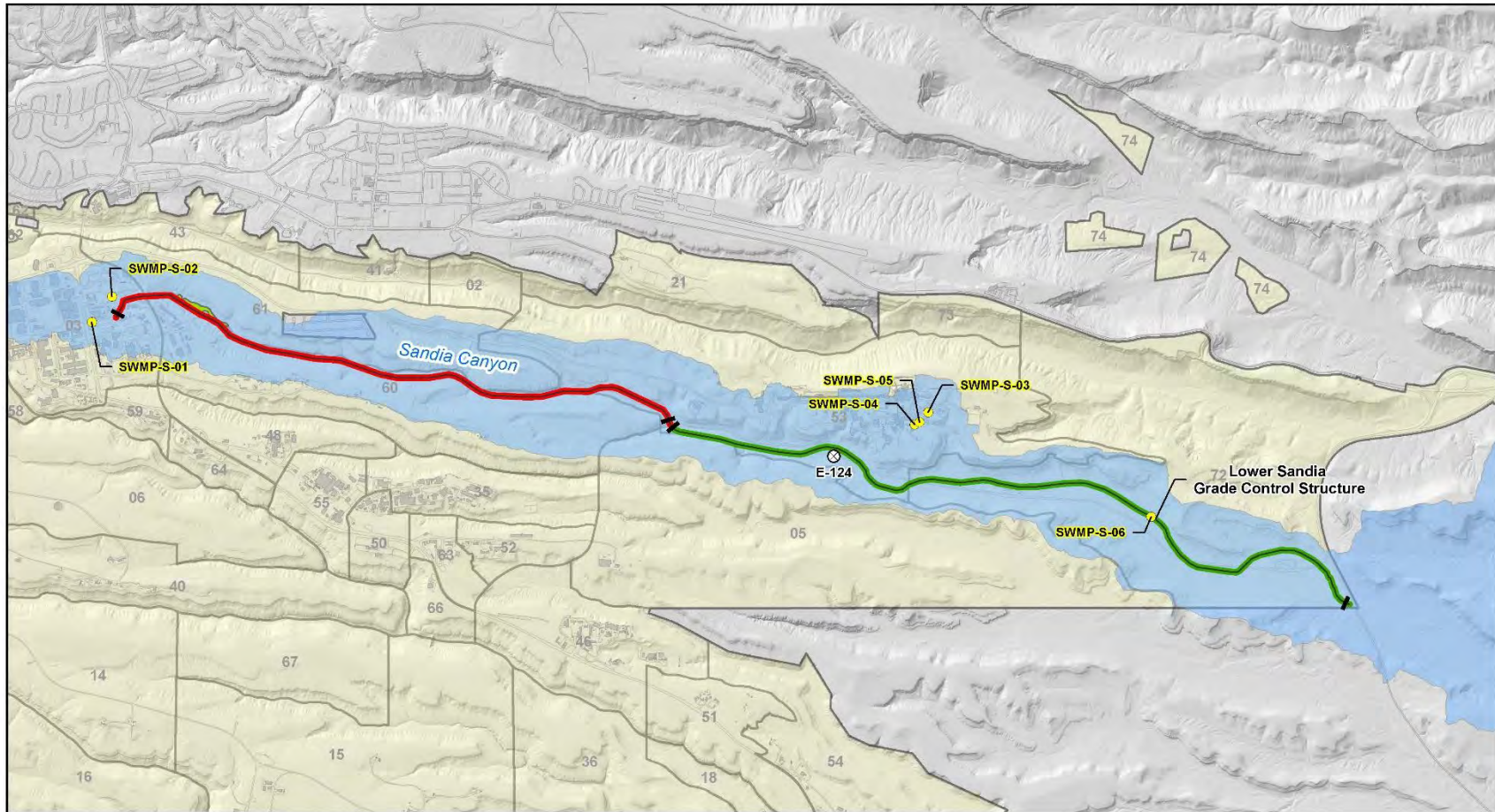
- I. Training for LANL personnel. We will investigate the possibility to incorporate storm water management goals and awareness into the General Employee Training and Environmental Management System curricula.
- II. The Laboratory has an Integrated Review Tool (IRT) to review projects for issues and requirements. All projects submitted to the IRT are reviewed for environmental compliance as well as best management/good housekeeping practices.
- III. EPC-CP will work with Utilities and Institutional Facilities to review and update maintenance and inspection procedures for storm water features and activities.
- IV. EPC-CP will work with Utilities and Institutional Facilities to review and update street sweeping and snow removal/de-icing procedures.
- V. The LANL Pollution Prevention program actively works to fund source reduction opportunities wherever possible with regard to potential pollutants entering the environment. The program places particular emphasis on water resources. One such example is setting up an on-site PCB analysis capability to better understand site contributions of PCBs from legacy buildings and aging infrastructure which can affect storm water. Additionally, Pollution Prevention is working closely with acquisition services management, and LANL vendors, to identify more sustainable products with surface water at the forefront of this mission.
- VI. The MSGP regulates storm water discharges from specific industrial activities and their associated facilities. Triad manages 8 active facilities in 6 industrial sectors for the Laboratory, including a steam electric generating plant, an asphalt batch plant, metal fabrication, warehousing, heavy equipment maintenance, material recycling, and timber products, and 57 no-exposure facilities. Seven of these active facilities are located within the Sandia Canyon watershed. The MSGP provides specific conditions for permit authorization, such as implementation of control measures, development of SWPPPs, inspection requirements, monitoring of storm water discharges at all active facilities, compliance with numeric and non-numeric effluent limits, corrective actions, and compliance with biological and cultural resource protection laws.
- VII. EPC-CP will co-sponsor and/or participate in the annual Garbage Grab event sponsored by the Pollution Prevention Program.

- VIII. LANL will investigate the practicality of developing an Adopt-A-LID type program to help maintain LID features and facilitate workforce awareness and involvement in storm water management.
- IX. The Federal Insecticide, Fungicide, and Rodenticide Act (FIFRA) regulates the distribution, sale, and use of pesticides (chemicals that destroy plant, fungal, or animal pests). The New Mexico Pesticide Control Act requires that LANL license and certify pesticide workers, inspect equipment and maintain a database that tracks application, storage, and disposal of pesticides. LANL compliance with FIFRA is managed in accordance with our National Pollutant Discharge Elimination System Pesticide General Permit. FIFRA activities are reported in the Annual Site Environmental Report.

3. Monitoring Program

The initial scope of the SWMP will focus on stormwater discharges into Sandia Canyon. Figure 1 shows the Sandia Canyon watershed within LANL, the upper and lower assessment units (AUs) and proposed monitoring locations. S-01 and S-02 are the primary storm drain outfalls from TA-03 and will be used as run-on sampling locations for the upper AU. Gage station location E-124 will be used as the runoff sampling location for the upper AU and one of the run-on sampling locations for the lower AU. Sampling locations S-03, S-04 and S-05 will be used as TA-53 run-on sampling locations for the lower AU. Sampling location S-06 is located just upstream from the Lower Sandia Grade Control Structure and will be used as the runoff sampling location for the lower AU.

In addition, a Sampling and Analysis Plan (SAP) has been prepared that identifies analytical suites and sampling frequencies for each monitoring location. Table 1 is a summary of the SAP. We plan to collect four samples a year at each location. All sample analytical results will be posted on Intellus New Mexico.



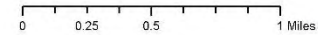
Sandia Stormwater Management Plan

- SWMP Sampler
- ⊗ Active Gage
- Sandia Canyon (NM-9000_A_047)
- Sandia Canyon (NM-128_A_11)
- Paved Road
- Wetland and Upper Sandia Grade Control Structure
- Sandia Canyon Watershed
- LANL Structure
- LANL
- Technical Area

Map #19-227-01_Stormwater_Management_Plan
 Created by Ben Sutter, IFPROG.
 November 26, 2019.

This map was created for work processes associated with EPC. All other uses for this map should be confirmed with LANL EPC-CP staff.

State Plane Coordinate System
 New Mexico, Central Zone, US Feet
 NAD 1983 Datum



GIS Program



Figure 1. Map showing Sandia Canyon watershed within LANL, upper and lower Assessment Units and proposed sampling locations.

Assessment Unit	Sample Location	DOC (F)	Ca/Mg/ Hardness (F)	Copper (F)	Mercury (UF)	Total Recoverable Aluminum (F10u)	Adjusted Gross Alpha (UF)
(Upper) Sandia Canyon (Sigma Canyon to NPDES outfall 001) NM-9000.A_047	SWMP-S-01	4	4	4		4	4
	SWMP-S-02	4	4	4		4	4
Upper and Lower	Sandia above Firing Range/E124	4	4	4	4	4	4
(Lower) Sandia Canyon (within LANL below Sigma Canyon) NM-128-A_11	SWMP-S-03	4	4		4	4	4
	SWMP-S-04	4	4		4	4	4
	SWMP-S-05	4	4		4	4	4
	SWMP-S-06	4	4		4	4	4

F = Filtered with 0.45 µm filter
 UF = Unfiltered
 F10u = Filtered with 10 µm filter

Table 1. Summary of the Storm Water Management Plan SAP.