




NMED Public Participation Policy Policy 07-13

Public Involvement Plan for Notice of a Remediation Plan

Chevron Isleta
3401 Isleta Boulevard SW
Albuquerque, New Mexico

Approved: 
Dana Bahar
Chief, Petroleum Storage Tank Bureau

Date: 9/6/2018

Petroleum Storage Tank Bureau
August 16, 2018

1. Public Involvement Plan (PIP) Overview

The New Mexico Environment Department (“NMED” or “Department”), Petroleum Storage Tank Bureau (“PSTB”) developed this Public Involvement Plan (“PIP”) for the Remediation Plan review for the Chevron Isleta site located at 3401 Isleta Boulevard SW, Albuquerque, New Mexico.

The PSTB has developed this PIP to provide public participation opportunities and information to facilitate the public’s participation in the remediation planning process related to this site.

This PIP integrates information about the community and identifies resources needed by the PSTB to successfully incorporate community participation activities into the decision-making process for the planning process. The PIP identifies the PSTB staff and resources needed to accomplish these activities.

The remediation planning process may require public participation throughout different stages. The PSTB will meet the public participation requirements for the planning process by following this PIP, which includes all applicable policy, regulatory and statutory public notice and participation requirements.

In developing this PIP, community participation needs at the site were assessed to ensure appropriate promotion of public outreach is conducted by identifying whether there is a combination of environmental and demographic factors (i.e., low income community, minority community, limited English proficiency individuals, Linguistically Isolated Households, etc.) that may affect public participation (refer to Element 4 of this PIP). This assessment identifies community outreach needs and provides for public access opportunities above and beyond statutorily mandated requirements and underscores the provision of adequate public access to information about the remediation planning process.

As much as possible, public participation and informational activities related to the remediation planning process will be held within the timelines outlined in the table below. This timeline is tentative and subject to change; activities subject to statutory or regulatory deadlines are noted.

In the timeline for this remediation planning process, public comments may be submitted to the PSTB prior to the PSTB’s determination that the Remediation Plan is acceptable. Upon a determination that the Remediation Plan is acceptable, the PSTB will implement the Remediation Plan.

The Chevron Isleta site is in Albuquerque, New Mexico in an area that has a relatively large community of Spanish speakers. Therefore, the PSTB will provide information in both English and Spanish notices.

As deemed necessary based on knowledge of the surrounding community, arrangements may be made for translation services. At any time during the planning process, the Remediation Plan and relevant documents may be reviewed at either of the repositories listed.

More detailed information about planned PSTB outreach is available in this PIP.

Activity	Dates
Posting of PIP (PSTB website and office)	October 12, 2018
Public Comment Period for PIP	Ongoing
PIP Revision	As necessary
Posting of Revised PIP	Within 21 days of receipt of substantial comment
Public Notice of Planned Submission of Draft Remediation Plan	December 26, 2018
Submittal of Draft Remediation Plan	December 28, 2018
Posting of Draft Remediation Plan (PSTB website and office)	December 28, 2018
Second Public Notice of Submission of Draft Remediation Plan	January 3, 2019
Public Comment Period for Draft Remediation Plan	January 24, 2019
Incorporation of Comments and Preparation of Final Remediation Plan	February 1, 2019
FRP Implementation	March 14, 2019
Post-Injection Sampling	April 15, 2019
Report Submittal	April 30, 2019

The Chief of the PSTB provides final approval of the PIP and amendments. This PIP is a “living” document that may be amended after considering public comments and feedback.

2. Contacts

If you have questions about the remediation planning process, site, or this PIP, please contact:

Mike Timmer
Project Manager
NMED Petroleum Storage Tank Bureau
121 Tijeras NE, Suite 1000
Albuquerque, NM 87102
Tel (505) 222-9562
E-mail: michael.timmer@state.nm.us

Non-English Language Speaker Assistance and Accommodations

Non-English speakers or readers may call the PSTB contact listed in this PIP and request language assistance services, such as an interpreter, so they can learn more about the planning process. Services may be arranged for translation of documents, for interpreters, and for obtaining services for persons with disabilities. A phone-based interpretation service may be available for languages other than English.

Persons requiring non-English Language Speaker Assistance, assistance for an interpreter or auxiliary aid (e.g., accommodations for persons who are disabled) to participate in the planning process should be directed to contact the PSTB, allowing at least 14 days prior to the end of the comment review period

Mike Timmer
Project Manager
NMED Petroleum Storage Tank Bureau
121 Tijeras NE, Suite 1000
Albuquerque, NM 87102
Tel (505) 222-9562
E-mail: michael.timmer@state.nm.us

TDD or TTY users please access the number via the New Mexico Relay Network, 1-800-659-1779 (voice); TTY users: 1-800-659-8331).

Department Websites

New Mexico Environment Department - <https://www.env.nm.gov/>
Petroleum Storage Tank Bureau - https://www.env.nm.gov/petroleum_storage_tank/

3. Regulatory Framework for Public Participation

There are existing federal and state laws governing the management of petroleum hydrocarbon releases. The United States Congress enacted the Resource Conservation and Recovery Act (RCRA), an amendment to the Solid Waste Disposal Act, in 1976 to ensure safe management and disposal of household, municipal and industrial waste generated nationwide. 42 U.S.C. § 6901 *et. seq.*, 42 U.S.C. § 6921 *et. seq.*

In 1984, Congress added Subtitle I to the Solid Waste Disposal Act, which required the U.S. Environmental Protection Agency (“EPA”) to develop a comprehensive regulatory program for Underground Storage Tank (“UST”) systems storing petroleum or certain hazardous substances to protect the environment and human health from UST releases. 42 U.S.C. § 6991 *et. seq.* In 1988, the EPA promulgated the UST regulations (40 CFR Part 280) and the regulations for state program approval (40 CFR Part 281). State program approval delegates the primary responsibility of implementing the federal UST program to individual states in lieu of the EPA. NMED PSTB currently has SPA from EPA.

New Mexico’s Petroleum Storage Tank regulations, 20.5 NMAC, are promulgated pursuant to the provisions of the Hazardous Waste Act, Sections 74-4-1 through 74-4-14 NMSA 1978; the Ground Water Protection Act, Sections 74-6B-1 through 74-6B-14 NMSA 1978; and the general provisions of the Environmental Improvement Act, Sections 74-1-1 through 74-1-17 NMSA 1978.

Owners and operators of petroleum storage tanks where a release has occurred which requires a final remediation plan shall develop a final remediation plan which includes public notice that meets the requirements of paragraph (10) of subsection D of 20.5.119.1923 NMAC, and paragraph B of 20.5.119.1928 NMAC.

The Department may provide for public participation in the review process as the Department deems appropriate or when there is significant public interest as provided for in subsection D of 20.5.119.1924 NMAC. In the event that an informal public meeting, public hearing or other form of public participation is conducted, the Department may postpone its decision on the final remediation plan until after a public hearing or meeting is held and a determination is made. Any public hearing or meeting that is held due to significant public interest shall be held within 60 days of determining that there is significant public interest.

Facility Background

The Chevron Isleta site is a former gas station located at 3401 Isleta Boulevard SW in Albuquerque’s South Valley, New Mexico. All the USTs were removed from the site in 1994. A Walgreens store was built at the site in 2012. Remedial activities have included the excavation of contaminated soil followed by operation of an air sparge/soil vapor extraction system. The State of New Mexico has designated the site a state-lead site because the responsible party (the owner/operator of the site at the time of the release of petroleum products) was unable to perform its responsibilities as required by the Petroleum Storage Tank Regulations.

Depth to water at the site ranges from six to eight feet below the ground surface. Groundwater

flow has been consistently to the south at a gradient of 0.001 ft/ft.

Groundwater monitoring has been on-going since 1995. The last monitoring event at the site was performed in April 2018, when groundwater samples were collected from each of the three groundwater monitor wells at the site. Benzene and total naphthalenes were detected in the groundwater samples from two of the monitor wells at concentrations that exceeded their New Mexico Water Quality Control Commission groundwater quality standards. Exceedances of the groundwater standards have occurred in these two wells consistently. No petroleum hydrocarbons were detected in the sample from the other well.

The planned remediation consists of the injection of a mixture of activated carbon to adsorb (trap) the petroleum constituents in the groundwater and nutrients and organisms to enhance the bioremediation (treatment to augment removal) of the petroleum constituents.

4. Affected Communities and Stakeholders

To provide for adequate public participation opportunities and meaningful involvement of persons in the planning process and to address potential or existing environmental justice areas, the affected communities must first be identified, informed about proposed environmental actions affecting the community, and invited to share their comments and concerns. The EJSCREEN tool developed by the U.S. Environmental Protection Agency (EPA) helps identify communities that are low income and minority populations that may benefit from a variety of approaches for notification and outreach communication. This information is used to help encourage the community's involvement in the public process for environmental activities or actions. In this case, the activity is consideration of a Remediation Plan for a petroleum storage tank site.

Using the results of the EJSCREEN ACS Summary Report (see Attachment 1), there are 2,241 households within a 1-mile radius from the facility (i.e., affected community); the minority percentage for the affected community is 87 percent, with the Hispanic population accounting for 84 percent and the Black, American Indian, and mix of two or more races accounting for 1 percent each of the minority population (for populations reporting one race). The percentage of persons that communicate in a language other than English (non-English) at home is 53 percent. The percentage of linguistically isolated households is 9%. The per capita income for the affected community is \$16,081 as compared to the national per capita income of \$28,930. These results indicate that for the affected community, the percentage of Spanish language communication (9 percent) is considerable (i.e., greater than the state or national percentage). Additionally, the EJ Screen report indicates that of the linguistically isolated households in the affected area, 95% speak Spanish.

To help incorporate the language and communication needs of this community when conducting public outreach and participation activities (see Attachment 2), the PSTB will provide the same information in Spanish and English in public comment notices and other announcements (brochures, signs, mailings, etc.) and strive to make public participation efforts as inclusive as possible within PSTB budget and time limitations.

For example, as much as possible, mass communication methods will be used in addition to public notices in appropriate newspapers or mailings, as many residents in the affected community may not have regular access to newspapers or daily postal service and may rely on publicly posted notices. Informational flyers shall be posted at the site (front window of the Walgreens at 3401 Isleta Boulevard SW) that also describe public information repositories.

It is important for the PSTB to consider the linguistic and communication needs of the affected community when providing notice of submission of Remediation Plans. Based on the EJSCREEN results, the PSTB will provide information in Spanish and English when providing such notices for the Chevron Isleta site.

5. Detailed Public Participation and Outreach Activities for Remediation Plan, Chevron Isleta

The PSTB evaluates all public comments, places the comments in the administrative files for the remedial action, and incorporates public input into the PSTB's comments on Remediation Plans as appropriate.

The PSTB's plans for facilitating public participation in the remediation planning action for the Chevron Isleta site are detailed below.

Public Notice Requirements per Applicable Laws

The Petroleum Storage Tank Regulations, 20.5.119.1923.D (10) NMAC, as detailed below, address notices to be provided by the owner or operator (*for this state-lead site, the PSTB*) to the public regarding the submission of a Remediation Plan for public comment. This notice is provided prior to the submission of the Remediation Plan and informs the public that the PSTB will be reviewing the Plan. The PSTB will provide notice of the submission of a Remediation Plan in English and Spanish. Spanish-language notices will be translated from English into Spanish by a translator certified by the American Translators Association for English to Spanish translation.

The **bolded information in brackets** is responsive to the regulatory requirements *in italics* below.

The owner/operator [for this state-lead site, the PSTB] is required to provide notice in the following manner:

(a) *owners and operators [the PSTB] shall publish a legal notice of the submission or planned submission of the final remediation plan at least twice in a paper of general circulation [Legal Section of the Classified Ads of the Albuquerque Journal] in the county in which soil or water has been contaminated by the release; the first notice shall appear within one week of, but not later than, the day of submission of the final remediation plan to the Department; the second publication of this notice shall occur no later than seven days after the date the remediation plan is submitted to the Department, and owners and operators shall submit two certified affidavits of publication from the newspaper to the Department within 21 days after the date the final remediation plan is submitted;*

(b) *the notice shall contain the information specified in this section including the following:*

(i) *a statement that a remediation plan has been submitted to the Department proposing actions to remediate a release of petroleum products;*

(ii) *the name and physical address of the site at which the release occurred and the names and physical addresses of properties where any part of the remediation system will be located, using adequate identification of the properties, including street addresses if applicable [3401 Isleta Boulevard SW, Albuquerque];*

(iii) a statement that a copy of the remediation plan and all data and modeling related to the remediation plan, if applicable, can be viewed at the Department's **[PSTB's] main office [located at 2905 Rodeo Park Drive East, Building 1, Santa Fe, New Mexico 87505]** and at the Department's field office for the area in which the release occurred **[District 1 Albuquerque office located at 121 Tijeras, NE, Suite 1000, Albuquerque, New Mexico 87102]**; and

(iv) a statement that public comments on the plan must be delivered, within 21 days of the publication of the second notice, to the owner or operator's assigned project manager **[Mike Timmer]** at the petroleum storage tank bureau, New Mexico environment Department, or a district office **[District 1 Albuquerque office located at 121 Tijeras, NE, Suite 1000, Albuquerque, New Mexico 87102]** if approved by the Department, and to the secretary of the environment Department;

(c) within seven days of the date a remediation plan is submitted to the Department, owners and operators **[the PSTB]** shall also mail by certified mail a copy of the legal notice **[in English and Spanish]** to adjacent property owners; and

(d) owners and operators **[the PSTB]** shall post a notice **[in English and Spanish]** of the submission of the remediation plan at the release site within seven days of the submission of the remediation plan; the notice shall contain the information specified in this subsection and shall be at least 8.5 inches by 11 inches in size and prominently displayed in a location where it is likely to be seen by members of the public for a continuous period until the remediation plan is approved and implemented; public comments must be received by the Department within 21 days of the date of the second publication of the public notice;

Proposed Public Participation and Outreach Activities for Chevron Isleta Site

The PSTB will perform the following public participation and outreach activities during the review phase of the planning process for the Chevron Isleta remediation:

1. **Information Repository:** A copy of the Remediation Plan and the PIP will be made available for public review at the PSTB's main office at **2905 Rodeo Park Drive East, Building 1, Santa Fe, New Mexico 87505** and at the NMED District 1 Albuquerque office located at **121 Tijeras Avenue NE, Suite 1000, Albuquerque, New Mexico 87102**. In addition, the Remediation Plan, the PIP, and all applicable data may be viewed at the following website:

<https://cloud.env.nm.gov/waste/pages/search.php?search=%21collection2397&k=bc358790b3>

2. **Electronic Posting of Public Notice:** The PSTB will post the notice and the PIP on the PSTB's portion of NMED's website (https://www.env.nm.gov/petroleum_storage_tank/). Electronically-posted notices will be provided in English and Spanish.
3. **Language Assistance Services:** Non-English speakers or readers will be directed in notices to call the PSTB contact listed in this PIP and request language assistance services,

such as an interpreter, so they can learn more about the planning process. Services may be arranged by the PSTB for translation of documents, for interpreters, and for obtaining services for persons with disabilities. A phone-based interpretation service is available to the PSTB for speakers of languages other than English.

Attachment 1: Preliminary Screening (EJSCREEN)

Public Outreach Preliminary Screen (EJSCREEN)

Facility: Chevron Isleta
Location: 3401 Isleta Boulevard SW, Albuquerque, NM 87105
Buffer: 1 mile
Date: June 13, 2018

Total population within 1-mile radius*:	6,795
Total population age 5+ years within 1-mile radius*:	6,398
Number of households within 1-mile radius*:	2,241
Per capita income within 1-mile radius*:	\$16,081
Per capita income, USA**:	\$28,930
Percent minority population within 1-mile radius*(population reporting one race):	87%
Percent minority population by race within 1-mile radius*:	
Hispanic:	84%
Black:	1%
American Indian:	1%
Non-Hispanic Asian:	1%
Pacific Islander:	0%
Other race alone:	0%
Two or more races alone:	1%
<i>Sum:</i>	87%
Percent linguistically isolated households within 1-mile radius**:	9%
Percent linguistically isolated households by language within 1-mile radius:	
Spanish***:	95%
Other Indo-European languages:	0%
Other Asian-Pacific Island languages****:	5%
Other languages:	0%
<i>Sum:</i>	100%
Population age 5+ yrs speaking English "less than very well" within 1-mile radius*:	19%

*: From EJSCREEN ACS Summary Report

** : 208 households /2,241 total households

*** : 197 Spanish speaking households /208 linguistically isolated households

**** : 11 Other Asian-Pacific Island speaking households/208 linguistically isolated households

Detail may not sum to total due to rounding.



Location: User-specified point center at 35.027248, -106.680626
 Ring (buffer): 1-mile radius
 Description: Chevron Isleta

Summary of ACS Estimates		2011 - 2015		
Population				6,795
Population Density (per sq. mile)				2,671
Minority Population				5,901
% Minority				87%
Households				2,241
Housing Units				2,391
Housing Units Built Before 1950				277
Per Capita Income				16,081
Land Area (sq. miles) (Source: SF1)				2.54
% Land Area				93%
Water Area (sq. miles) (Source: SF1)				0.18
% Water Area				7%
		2011 - 2015 ACS Estimates	Percent	MOE (±)
Population by Race				
Total		6,795	100%	529
Population Reporting One Race		6,598	97%	1,325
White		4,146	61%	566
Black		53	1%	76
American Indian		171	3%	160
Asian		18	0%	69
Pacific Islander		0	0%	11
Some Other Race		2,209	33%	443
Population Reporting Two or More Races		197	3%	127
Total Hispanic Population		5,709	84%	525
Total Non-Hispanic Population		1,086		
White Alone		894	13%	220
Black Alone		41	1%	76
American Indian Alone		47	1%	61
Non-Hispanic Asian Alone		18	0%	69
Pacific Islander Alone		0	0%	11
Other Race Alone		0	0%	16
Two or More Races Alone		85	1%	126
Population by Sex				
Male		3,253	48%	330
Female		3,542	52%	303
Population by Age				
Age 0-4		397	6%	125
Age 0-17		1,593	23%	205
Age 18+		5,202	77%	301
Age 65+		989	15%	135

Data Note: Detail may not sum to totals due to rounding. Hispanic population can be of any race. N/A means not available.
 Source: U.S. Census Bureau, American Community Survey (ACS) 2011 - 2015.



Location: User-specified point center at 35.027248, -106.680626

Ring (buffer): 1-mile radius

Description: Chevron Isleta

	2011 - 2015 ACS Estimates	Percent	MOE (±)
Population 25+ by Educational Attainment			
Total	4,505	100%	316
Less than 9th Grade	757	17%	125
9th - 12th Grade, No Diploma	630	14%	147
High School Graduate	1,643	36%	168
Some College, No Degree	1,024	23%	141
Associate Degree	226	5%	80
Bachelor's Degree or more	452	10%	132
Population Age 5+ Years by Ability to Speak English			
Total	6,398	100%	520
Speak only English	2,981	47%	340
Non-English at Home ¹⁺²⁺³⁺⁴	3,417	53%	371
¹ Speak English "very well"	2,191	34%	322
² Speak English "well"	517	8%	149
³ Speak English "not well"	402	6%	114
⁴ Speak English "not at all"	306	5%	141
³⁺⁴ Speak English "less than well"	708	11%	181
²⁺³⁺⁴ Speak English "less than very well"	1,225	19%	195
Linguistically Isolated Households*			
Total	208	100%	75
Speak Spanish	197	95%	74
Speak Other Indo-European Languages	0	0%	11
Speak Asian-Pacific Island Languages	11	5%	28
Speak Other Languages	0	0%	11
Households by Household Income			
Household Income Base	2,241	100%	123
< \$15,000	466	21%	108
\$15,000 - \$25,000	400	18%	70
\$25,000 - \$50,000	537	24%	90
\$50,000 - \$75,000	381	17%	83
\$75,000 +	456	20%	99
Occupied Housing Units by Tenure			
Total	2,241	100%	123
Owner Occupied	1,776	79%	129
Renter Occupied	464	21%	104
Employed Population Age 16+ Years			
Total	5,366	100%	435
In Labor Force	3,125	58%	390
Civilian Unemployed in Labor Force	341	6%	88
Not In Labor Force	2,241	42%	224

Data Note: Detail may not sum to totals due to rounding. Hispanic population can be of any race. N/A means not available. **Source:** U.S. Census Bureau, American Community Survey (ACS) 2011 - 2015.

*Households in which no one 14 and over speaks English "very well" or speaks English only.



Location: User-specified point center at 35.027248, -106.680626
 Ring (buffer): 1-mile radius
 Description: Chevron Isleta

	2011 - 2015 ACS Estimates	Percent	MOE (±)
Population by Language Spoken at Home*			
Total (persons age 5 and above)	6,398	100%	520
English	N/A	N/A	N/A
Spanish	N/A	N/A	N/A
French	N/A	N/A	N/A
French Creole	N/A	N/A	N/A
Italian	N/A	N/A	N/A
Portuguese	N/A	N/A	N/A
German	N/A	N/A	N/A
Yiddish	N/A	N/A	N/A
Other West Germanic	N/A	N/A	N/A
Scandinavian	N/A	N/A	N/A
Greek	N/A	N/A	N/A
Russian	N/A	N/A	N/A
Polish	N/A	N/A	N/A
Serbo-Croatian	N/A	N/A	N/A
Other Slavic	N/A	N/A	N/A
Armenian	N/A	N/A	N/A
Persian	N/A	N/A	N/A
Gujarathi	N/A	N/A	N/A
Hindi	N/A	N/A	N/A
Urdu	N/A	N/A	N/A
Other Indic	N/A	N/A	N/A
Other Indo-European	N/A	N/A	N/A
Chinese	N/A	N/A	N/A
Japanese	N/A	N/A	N/A
Korean	N/A	N/A	N/A
Mon-Khmer, Cambodian	N/A	N/A	N/A
Hmong	N/A	N/A	N/A
Thai	N/A	N/A	N/A
Laotian	N/A	N/A	N/A
Vietnamese	N/A	N/A	N/A
Other Asian	N/A	N/A	N/A
Tagalog	N/A	N/A	N/A
Other Pacific Island	N/A	N/A	N/A
Navajo	N/A	N/A	N/A
Other Native American	N/A	N/A	N/A
Hungarian	N/A	N/A	N/A
Arabic	N/A	N/A	N/A
Hebrew	N/A	N/A	N/A
African	N/A	N/A	N/A
Other and non-specified	N/A	N/A	N/A
Total Non-English	N/A	N/A	N/A

Data Note: Detail may not sum to totals due to rounding. Hispanic population can be of any race. N/A means not available. **Source:** U.S. Census Bureau, American Community Survey (ACS) 2011 - 2015.

*Population by Language Spoken at Home is available at the census tract summary level and up.

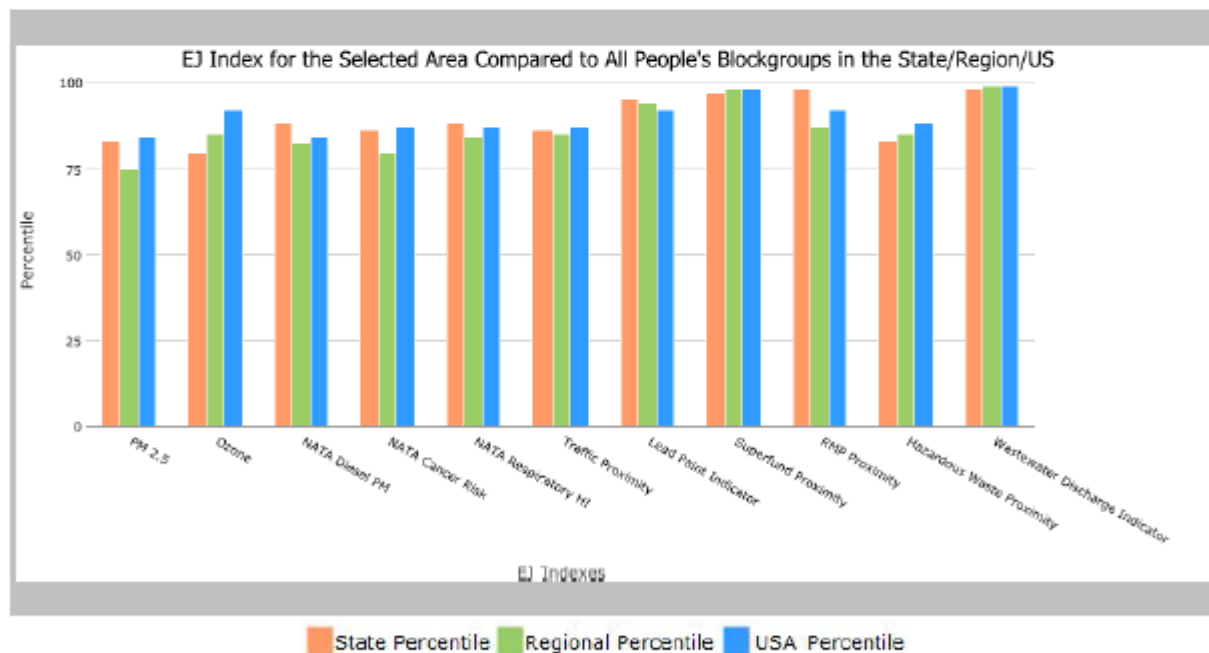
1 mile Ring Centered at 35.027248,-106.680626, NEW MEXICO, EPA Region 6

Approximate Population: 6,795

Input Area (sq. miles): 3.14

Chevron Isleta

Selected Variables	State Percentile	EPA Region Percentile	USA Percentile
EJ Indexes			
EJ Index for PM2.5	83	75	84
EJ Index for Ozone	80	85	92
EJ Index for NATA [*] Diesel PM	88	82	84
EJ Index for NATA [*] Air Toxics Cancer Risk	86	80	87
EJ Index for NATA [*] Respiratory Hazard Index	88	84	87
EJ Index for Traffic Proximity and Volume	86	85	87
EJ Index for Lead Paint Indicator	95	94	92
EJ Index for Superfund Proximity	97	98	98
EJ Index for RMP Proximity	98	87	92
EJ Index for Hazardous Waste Proximity	83	85	88
EJ Index for Wastewater Discharge Indicator	98	99	99



This report shows the values for environmental and demographic indicators and EJSCREEN indexes. It shows environmental and demographic raw data (e.g., the estimated concentration of ozone in the air), and also shows what percentile each raw data value represents. These percentiles provide perspective on how the selected block group or buffer area compares to the entire state, EPA region, or nation. For example, if a given location is at the 95th percentile nationwide, this means that only 5 percent of the US population has a higher block group value than the average person in the location being analyzed. The years for which the data are available, and the methods used, vary across these indicators. Important caveats and uncertainties apply to this screening-level information, so it is essential to understand the limitations on appropriate interpretations and applications of these indicators. Please see EJSCREEN documentation for discussion of these issues before using reports.



EJSCREEN Report (Version 2017)



1 mile Ring Centered at 35.027248,-106.680626, NEW MEXICO, EPA Region 6

Approximate Population: 6,795

Input Area (sq. miles): 3.14

Chevron Isleta

Selected Variables	Value	State Avg.	%ile in State	EPA Region Avg.	%ile in EPA Region	USA Avg.	%ile in USA
Environmental Indicators							
Particulate Matter (PM 2.5 in $\mu\text{g}/\text{m}^3$)	7.18	6.35	83	9.15	10	9.14	13
Ozone (ppb)	48.2	47.4	49	40.2	97	38.4	97
NATA* Diesel PM ($\mu\text{g}/\text{m}^3$)	0.823	0.473	83	0.721	60-70th	0.938	50-60th
NATA* Cancer Risk (lifetime risk per million)	41	32	81	42	<50th	40	50-60th
NATA* Respiratory Hazard Index	2	1.4	82	1.8	60-70th	1.8	60-70th
Traffic Proximity and Volume (daily traffic count/distance to road)	330	290	74	320	76	590	71
Lead Paint Indicator (% Pre-1960 Housing)	0.4	0.19	83	0.18	84	0.29	69
Superfund Proximity (site count/km distance)	0.55	0.14	94	0.078	98	0.13	95
RMP Proximity (facility count/km distance)	1.4	0.24	98	0.8	83	0.73	84
Hazardous Waste Proximity (facility count/km distance)	0.089	0.13	68	0.083	74	0.093	70
Wastewater Discharge Indicator (toxicity-weighted concentration/m distance)	8.9	2.1	97	0.37	99	30	98
Demographic Indicators							
Demographic Index	70%	52%	76	45%	81	36%	88
Minority Population	87%	61%	82	50%	82	38%	88
Low Income Population	53%	43%	65	39%	72	34%	79
Linguistically Isolated Population	9%	5%	77	6%	76	5%	82
Population With Less Than High School Education	31%	16%	84	17%	82	13%	89
Population Under 5 years of age	6%	7%	47	7%	40	6%	50
Population over 64 years of age	15%	15%	56	12%	68	14%	59

* The National-Scale Air Toxics Assessment (NATA) is EPA's ongoing, comprehensive evaluation of air toxics in the United States. EPA developed the NATA to prioritize air toxics, emission sources, and locations of interest for further study. It is important to remember that NATA provides broad estimates of health risks over geographic areas of the country, not definitive risks to specific individuals or locations. More information on the NATA analysis can be found at: <https://www.epa.gov/national-air-toxics-assessment>.

For additional information, see: www.epa.gov/environmentaljustice

EJSCREEN is a screening tool for pre-decisional use only. It can help identify areas that may warrant additional consideration, analysis, or outreach. It does not provide a basis for decision-making, but it may help identify potential areas of EJ concern. Users should keep in mind that screening tools are subject to substantial uncertainty in their demographic and environmental data, particularly when looking at small geographic areas. Important caveats and uncertainties apply to this screening-level information, so it is essential to understand the limitations on appropriate interpretations and applications of these indicators. Please see EJSCREEN documentation for discussion of these issues before using reports. This screening tool does not provide data on every environmental impact and demographic factor that may be relevant to a particular location. EJSCREEN outputs should be supplemented with additional information and local knowledge before taking any action to address potential EJ concerns.

June 13, 2018

3/3

Attachment 2: Limited English Proficiency Assessment

Limited English Proficiency ("LEP") Assessment

Facility: Chevron Isleta
Location: 3401 Isleta Boulevard, Albuquerque, NM
Buffer: 1 mile
Date: June 20, 2018

Factor 1: *Number and Proportion of LEP Individuals Eligible to be Served or Likely to be Encountered in Community of Concern*

Percent linguistically isolated households within 1-mile radius*:	9.3%
Percent linguistically isolated households by language within 1-mile radius*:	
Spanish:	8.8%
Other Indo-European languages:	0.0%
Other Asian-Pacific Island languages:	0.5%
Other languages:	0.0%
Sum:	9.3%
Percent linguistically isolated population, New Mexico**:	5%
Percent linguistically isolated population, USA**:	5%
Population age 5+ yrs speaking English "less than very well" within 1-mile radius*:	19.1%

* : From "EJSCREEN ACS Report"

** : From "EJSCREEN Report (Version 2017)"

Conclusions:

- 1) Proportion of LEP persons within one mile is somewhat greater than the statewide and national proportions.
- 2) Spanish is the primary non-English language spoken by LEP persons.
- 3) Historical participation: Not applicable (new remediation plan notice).

Factor 2: *Frequency with which LEP Individuals Come in Contact with the Program*

Frequency Assessment ("frequent" / "occasional" / "not frequent"):

Not frequent

This determination based on the lack of response to past notices of submission by the public.

Factor 3: *Nature or Importance of the Activity or Service Provided by the Program*

All Remediation Plans for PSTB sites are required by the NM Petroleum Storage Tank regulations to be made available for review prior to their finalization and implementation. The Remediation Plans are reviewed by the PSTB to assess compliance with regulatory requirements and to evaluate their technical adequacy. The Remediation Plan is approved after the PSTB's review is complete, any inadequacies are addressed, and the public comments are evaluated and addressed as appropriate.

The Remediation Plan review is deemed by the PSTB to be "important" to NMED, the affected community, and the State of New Mexico. Remediation Plan review is important to the NMED because it establishes site-specific requirements that must be met to ensure protection of public health, welfare, and the environment. Remediation Plan review is important to the affected community because poorly implemented or poorly operated remediation activities have the potential to pose a public nuisance and adversely affect the quality of life of people living in the vicinity of the leaking petroleum storage tank site. Remediation Plan review is important to the State of New Mexico because implementation of effective remedial actions ensures that leaking petroleum tank sites will limit their effect on the State's limited groundwater resources.

Factor 4: *Resources Available to NMED and Associated Costs*

In accordance with regulatory requirements, the PSTB posts notices of submission in both English and Spanish and utilizes the services of a certified translator for creation of the Spanish-language notices. This translation cost is included in the Bureau's annual budget requests. As the need for additional translation/interpretation services has typically been limited, the PSTB has been able to provide these additional services within budgetary constraints.

LEP Services Plan:

The PSTB plans to provide notice of submission of Remediation Plans in both English and Spanish, which is consistent with statutory requirements and program practice and is appropriate as the majority of the LEP population speaks Spanish. As the PSTB's contact with LEP individuals has not been frequent and the proportion of LEP individuals within one mile of the facility is only slightly greater than the statewide data, the PSTB is not planning to provide further LEP services at this time. However, the PSTB will reconsider this decision if members of the affected community contact the Bureau to request additional LEP services.