



Public Involvement Plan

New Mexico Environment Department

Air Quality Bureau, Planning Section

Project: Operating (Part 71) and Construction (Part 75) Fees Rule Revision

Planning timeframe: February 2024 – September 2024

Project Planners: Armando Paz and Neal Butt

Approval: _____
Elizabeth Bisbey-Kuehn, Chief, Air Quality Bureau

Date: _____

Purpose

The New Mexico Environment Department (“NMED” or “Department”) developed this Public Involvement Plan (“Plan”) to provide public participation opportunities and information that may be needed to participate in the operating and construction fees rule revision project. The operating and construction fees rule revision project is being undertaken pursuant to the federal Clean Air Act (“CAA”) Section 502(b)(3)(B) and the New Mexico Air Quality Control Act, which requires NMED to periodically assess the operating and construction fee schedules to determine whether they are reasonable in sustaining the permit program’s administrative and operational duties under 20.2.71 New Mexico Administrative Code (NMAC) and 20.2.75 NMAC, respectively.

The Air Quality Bureau (“AQB” or “Bureau”) has developed this Plan to increase transparency regarding the planning and decision-making processes. This Plan integrates information about potentially affected communities and identifies resources needed by the Bureau to successfully incorporate community participation activities into the decision-making process. The Plan identifies the NMED staff and resources needed to accomplish these activities.

In developing this Plan, NMED assessed community participation needs to ensure appropriate promotion of public outreach, by identifying whether there is a combination of environmental and demographic factors (e.g., low-income communities, people of color communities, limited English proficient individuals, linguistically isolated households, etc.) that may impact public participation. This assessment identifies community outreach needs, provides for public access opportunities beyond statutory requirements, and supports the provision of adequate public access to information about the operating and construction fees rule revision project.

The operating and construction fees rule revision project may require public participation throughout different stages of planning and decision-making. The Bureau will follow this Plan, designed to ensure nondiscriminatory access to all applicable public participation opportunities related to policy, regulatory actions and statutory requirements.

Project Overview

The operating and construction fees rule revision project is being undertaken pursuant to the federal CAA Section 502(b)(3)(B) and the New Mexico Air Quality Control Act which requires the Department to periodically assess fees to determine if the revenue will be sufficient to sustain projected expenditures to successfully implement the permit programs’ administrative and operational obligations under 20.2.71 NMAC and 20.2.75 NMAC, respectively.

The operating and construction fees rule revision project is a planning effort, beginning in February 2024 and continuing through September 2024 when the final SIP revision will be submitted to EPA for construction fees. Outreach efforts will include opportunity to comment on documentation required by EPA and public hearings to incorporate those documents into the New Mexico SIP for construction fees.

Contacts

The following are the contacts for this action. These contacts will be included in the notice of proposed rulemaking and outreach materials.

Project and Public Involvement Plan contacts:

Armando Paz
Air Quality Bureau
2301 Entrada del Sol
Las Cruces, NM 88001
(505) 629-3242
armando.paz@state.nm.us

Neal Butt
Air Quality Bureau
525 Camino de los Marquez
Santa Fe, NM 87505
(505) 629-2972
neal.butt@state.nm.us

Website:

Outreach materials and the notice of proposed rulemaking will include links to the following website:

<https://www.env.nm.gov/public-notices/>

Non-English Language Speaker Assistance and Accommodations:

The Bureau will provide Spanish interpretation services upon request at all public meetings, including public hearings, and will also include information in the notice of proposed rulemaking about how persons may request interpretation services and/or accommodations for persons with disabilities. If any person requires an auxiliary aid (e.g., accommodations for persons who are disabled) to participate in any aspect of the project, they may contact one of the project contacts above, preferably 14 days prior to the end of any given public comment period. TDD or TTY users may access the number via the New Mexico Relay Network, 1-800-659-1779 (voice); TTY users, 1-800-659-8331.

Community Description / LEP Analysis

To address potential or existing environmental justice areas, Bureau staff completed an initial screening of the potentially affected communities, using the EJSCREEN tool developed by the EPA and the US Census Bureau website as support. This tool helps identify communities with demographic factors which may benefit from a variety of approaches for notification and outreach communication.

Table 1, below, summarizes the demographics of potentially affected communities analyzed using the EJSCREEN tool and the U.S. Census Bureau website data, including the proportion of limited English proficiency individuals.

Table 1: Potentially affected communities and their estimated demographics. Statistics are derived from American Community Survey reports (2018-2022) via the U.S. Census Bureau Website.

Potentially Affected Communities	Total number of households	Per capita income	Persons of Color population (%)	Linguistically Isolated Households* (%)	Predominant Language in Linguistically Isolated Households	LEP Individual† (%)
USA	125,736,353	\$41,261	41.1%	4.2%	Spanish	8.2%
New Mexico	812,852	\$32,667	64.4%	5.3%	Spanish	8.8%

* Linguistically Isolated Households are those in which no one 5 and over speaks English “very well,” or speaks English only.

† Limited English Proficient Individuals are those that speak a language other than English at home **and** who speak English “less than very well.”

The results of this screening suggest that attention should be paid to the linguistic and logistical needs of the low income, people of color, linguistically isolated and limited English proficiency populations in New Mexico. The results of the initial screening indicate that the per capita income is approximately 80 percent the U.S. mean per capita income and people of color represent the majority of residents. In addition, New Mexico has a comparable percentage of linguistically isolated households, of which all speak Spanish, and a correspondingly high percentage of limited English proficient individuals, relative to the U.S. average.

Historically, participation by LEP individuals in New Mexico-led permit hearings has been frequent and it is very important for the Bureau to incorporate the linguistic and communication needs of these communities when conducting public outreach and participation activities, to foster and support further participation by these communities.

An additional consideration is the low per capita income. The Bureau will consider transportation needs and typical work schedule issues when arranging public meetings and public hearings.

To help accomplish this, the Bureau will translate all fact sheets and the notice of proposed rulemaking into Spanish. Spanish interpretation services will be provided upon request at all public meetings and public hearings. The following are average costs associated with various services:

Costs associated with translation: \$1,000

Costs associated with providing a translator: \$2,500-5,000, depending on the length of the proceeding

Costs for a court reporter: \$2,000

The Bureau strives to make public participation efforts as inclusive as possible within budget and time limitations. The Department will use in-house translation and interpretation services whenever possible; however, contracted services may sometimes be necessary.

The operating and construction fees rule revision project is very important to the State, local governments, and industry. The revised fees will reasonably economically impact the stationary sources of air pollution. The operating and construction fees rule revision is important to the Department to not only meet federal requirements, but also to carry out its mission of protecting the air quality for the

State’s residents. Neighborhood residents and environmental organizations should view this planning effort as important for protecting their health as well.

Details of Outreach Activities

Based on the demographics outlined above, the history of public involvement for related projects, and projected impacts to potentially affected communities, the Bureau will provide important documents and the notice of proposed rulemaking in Spanish as well as English. The notice of proposed rulemaking will include information on how to request other communication assistance through NMED.

The following table offers information on how the public will be invited to participate in this project. A virtual public meeting and hearing will be utilized to facilitate public engagement.

Table 2: Timeline of initial public involvement opportunities. Note that dates may be approximate. The notice of proposed rulemaking will contain final dates, and specific locations and times. Following the initial planning period, a second, similar timeline will be added for the final SIP revisions.

Date(s)	Activity	Venue / Location	Time	Language service
March – April 2024	Email announcements for public meetings for Parts 71 & 75	AQB ListServ	n/a	English
March - April 2024	Public education meeting(s) to introduce Parts 71 & 75	In-person hybrid virtual meetings	variable – including some evenings	English with Spanish interpretive services (Upon request)
April 2024	Publish announcements for public hearing (Parts 71 & 75))	Carlsbad Current Argus; Albuquerque Journal; Farmington Daily Times	n/a	English and Spanish
April 2024	Email announcements for public hearing (Parts 71 & 75)	AQB ListServ	n/a	English and Spanish
June 2024	Public Hearing	In-person hybrid virtual hearing	TBD	English with Spanish interpretive services (Upon request)

The notice of proposed rulemaking and outreach materials will direct the public that they can receive email updates through NMED’s listserv by signing up electronically at <https://public.govdelivery.com/accounts/NMED/subscriber/new>, then choosing which topics they are most interested in. This project will periodically send updates to the AQB *Regulatory and SIP Announcements*, *Border Air Quality Announcements*, and *Ozone Attainment Initiative* listservs.

The following web sites provide access to the official notices electronically, per the publication outlets described above:

Carlsbad Current Argus

<https://www.currentargus.com/public-notices>

Albuquerque Journal

<http://legals.abqjournal.com/>

Farmington Daily Times

<https://www.daily-times.com/public-notices>

The notice of proposed rulemaking will be sent to the 23 active land grants to the email addresses that the Department maintains an active list for:

- Abiquiu
- Anton Chico
- Atrisco
- Cañon de Carnue
- Cebolleta
- Chilili
- Cristóbal de la Serna
- Cubero
- Don Fernando de Taos
- Juan Bautista Baldez
- Manzano
- San Antonio de Las Huertas
- San Antonio del Rio Colorado
- San Joaquín del Rio de Chama
- San Miguel del Bado
- Santa Barbara
- Santo Domingo de Cundiyó
- Santo Tomas Apóstol del Río de Trampas
- Tajique
- Tecolote
- Tierra Amarilla
- Town of Tomé
- Town of Torreón

The notice of proposed rulemaking will be sent to the five Council of Governments (COGs) and two Economic Development Districts listed below via email:

- Northwest NM COGs
- North Central NM Economic Development District
- Mid-Region COGs
- Eastern Plains COGs
- Southwest NM COGs
- Southeastern NM Economic Development District
- South Central COGs

The notice of proposed rulemaking will be sent to the 25 listed Pueblos, Nations, and Tribes email addresses that the Department maintains an active list for:

- Acoma
- Santa Clara

- Cochiti
- Isleta
- Jemez
- Laguna
- Nambe
- Ohkay Owingeh (San Juan)
- Picuris
- Pojoaque
- San Felipe
- San Ildefonso
- Sandia
- Santa Ana
- Kewa (Santo Domingo)
- Taos
- Tesuque
- Zia
- Zuni
- Ysleta del Sur
- Navajo Nation
- Navajo Nation Council
- Jicarilla Apache
- Mescalero Apache
- Fort Sill Apache

Document Repositories

The following is a list of locations where copies of relevant documents will be available to the community. Notice of proposed rulemaking and outreach materials will inform the public of these locations, as appropriate:

NMED District I Field Office – Albuquerque
 121 Tijeras Ave. NE
 STE 1000
 Albuquerque, NM 87102-3400
 Phone (505) 222-9500

Air Quality Bureau (in District II)
 525 Camino de los Marquez
 Santa Fe, New Mexico 87505
 (505) 476-4300

NMED District III Field Office – Las Cruces
 2301 Entrada del Sol
 Las Cruces, NM 88001
 (575) 288-2050

Electronic copies will be available at the following link, which will be included in the notice of proposed rulemaking and outreach materials as appropriate:

<https://www.env.nm.gov/public-notices/>



Limited English Proficiency (LEP) Services Evaluation

Air Quality Bureau

Project: Operating (Part 71) and Construction (Part 75) Fees Rules Revisions

Regulatory Significance: The Air Quality Bureau’s permit fees support the functions of the day-to-day operations for staff to carry out their mission of protecting resident’s health from sources of harmful air pollutants. Title V major sources emit more than 100 tons per year (tpy) of criteria pollutants or belong to certain categories of sources and are subject to 20.2.71 NMAC – *Operating Permit Emission Fees* (Part 71). In addition, new sources and modifications of existing sources with a potential to emit greater than 10 tpy of criteria air pollutants (or 1 ton of lead) are subject to the requirements of 20.2.75 NMAC *Construction Permit Fees* (Part 75). Operating and Construction permit fees must be increased to support programmatic duties the Department is implementing to comply with the federal Clean Air Act and the New Mexico Air Quality Control Act as the regulatory authority carrying out the permit programs for stationary sources of air pollutants located in the State of New Mexico, outside of the City of Albuquerque-Bernalillo County and tribal pueblos.

Factor 1 – The Number and Proportion of Limited-English Proficient Individuals Eligible to be Served or Likely to be Encountered in the Community of Concern.

Table 1 contains demographic indicators related to language obtained from the US Census Bureau’s American Community Survey (ACS) Five-Year Summary Reports (2018-2022) prepared for the project’s Public Involvement Plan (PIP). The results of the US Census Bureau’s ACS Summary Reports indicate that a larger percentage of population (64%) of the State of New Mexico are a person of color compared with the population of the United States (41%). Linguistically isolated households in the State of New Mexico (5.3%) are slightly higher than the U.S. average (4.2%). Spanish is the predominant language in these households. The per capita income is \$32,667 in the State of New Mexico; which is slightly less than 80 percent the average of U.S. per capita income (\$41,261). These results indicate that attention should be paid to additional language assistance, especially Spanish.

Table 1: Potentially affected communities and their estimated demographics.

Potentially Affected Communities	Total number of households	Per capita income	Person of Color population (%)	Linguistically Isolated Households* (%)	Predominant Language in Linguistically Isolated Households	LEP Individuals† (%)
USA	125,736,353	\$41,261	41.1%	4.2%	Spanish	8.2%
New Mexico	812,852	\$32,667	64.4%	5.3%	Spanish	8.8%

* Linguistically Isolated Households are those in which no one 5 and over speaks English “very well,” or speaks English only.

† Limited English Proficient Individuals are those that speak a language other than English at home **and** who speak English “less than very well.”

Factor 2 – The Frequency with Which LEP Individuals Come in Contact with the Program.

There are instances of contact with LEP individuals regarding permit hearings. As a result, all outreach materials will be translated into Spanish, due to the demographics noted in Table 1, above. In addition, due to the sizeable percentage of linguistically isolated households who speak Spanish, interpretation services will be offered for public meetings, including the required Environmental Improvement Board hearing. Through the outreach campaign, the Air Quality Bureau (AQB) intends to monitor the need for additional language services.

Factor 3 – The Nature and Importance of the Activity or Service Provided by the Program. (Moderately Important, Important, Very Important):

The Parts 71 and 75 fees rules revisions project is not very important to the public; however, it is very important for the New Mexico Environment Department (NMED or Department) and industry. The Department is required to periodically assess revenue and expenditures to determine whether the Operating and Construction fees are reasonable in sufficiently sustaining the operating budget through the current and future fiscal years to carry out operational and administrative duties.

Factor 4 – Resources Available to NMED and Associated Costs:

The Department has an in-house translator to assist Spanish speakers. In the event the in-house translation services are not available, the AQB has sufficient funds for the translation of material into Spanish and to provide Spanish interpretation services at meetings. The following are the anticipated costs for various portions of the proceedings:

- Costs associated with translation: \$1,000;
- Costs associated with providing a language interpreter: \$2,500-5,000, depending on the number and length of the proceeding(s) and the language assistance requested;
- Costs for a court reporter: \$2,000.

Conclusion: Based on the demographics outlined above, the history of public involvement for related projects, and projected impacts to potentially affected communities, additional language services will be provided. Fact sheets and public notices will be translated and available in Spanish. Spanish interpretation services for meetings, hearings or other procedures will be available upon request. All public notices will include information on how to request other communication assistance through NMED.

Additional information on how the public will be invited to participate in this project can be found in the PIP.

The LEP Services Evaluation has been reviewed and approved by the Air Quality Bureau Chief.

For _____
Liz Bisbey-Kuehn
Bureau Chief
Air Quality Bureau

Date approved

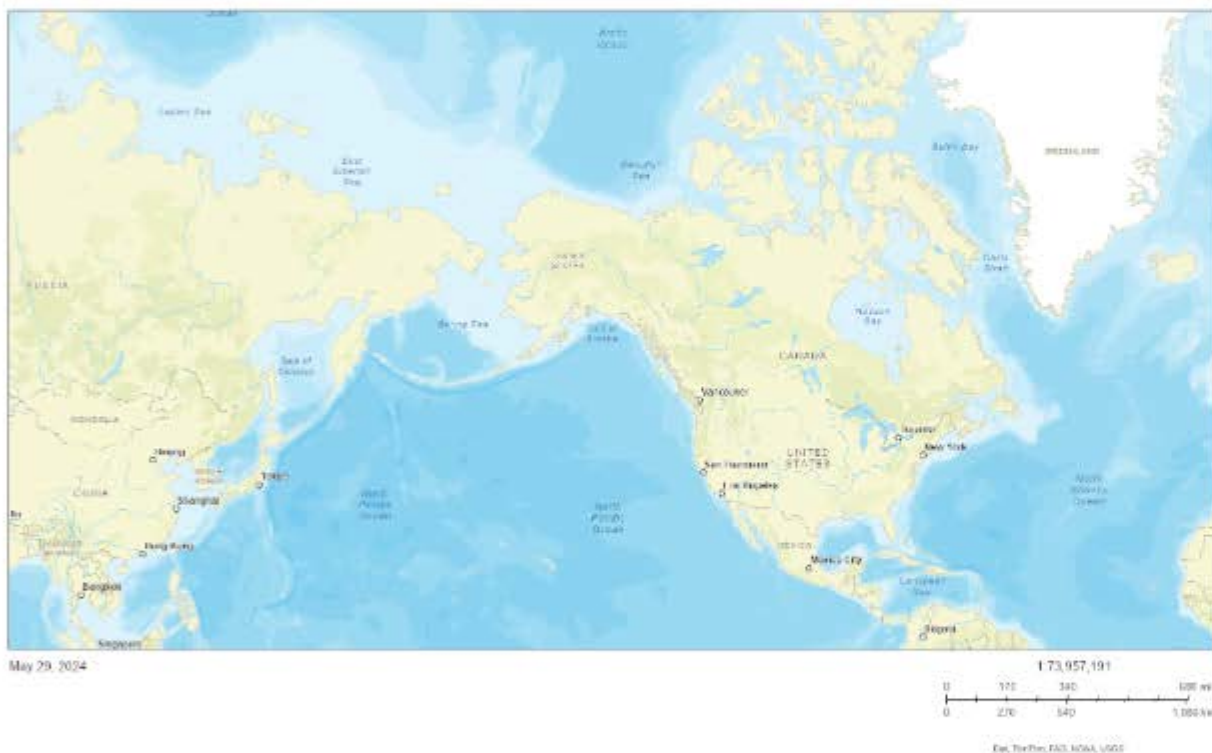
EJScreen Community Report

This report provides environmental and socioeconomic information for user-defined areas, and combines that data into environmental justice and supplemental indexes.

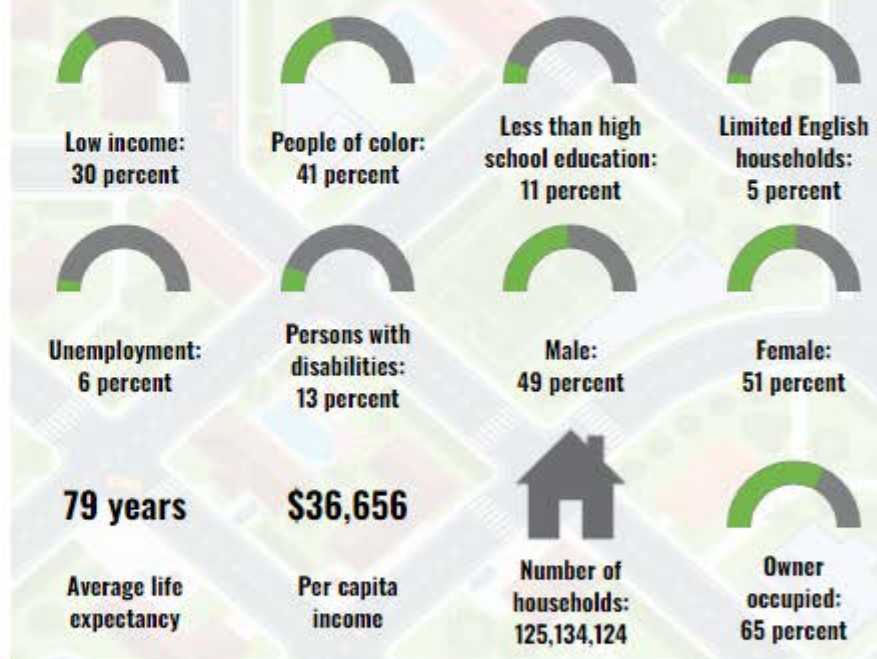
XX

the User Specified Area
 Population: 332,848,942
 Area in square miles: 6208962.12

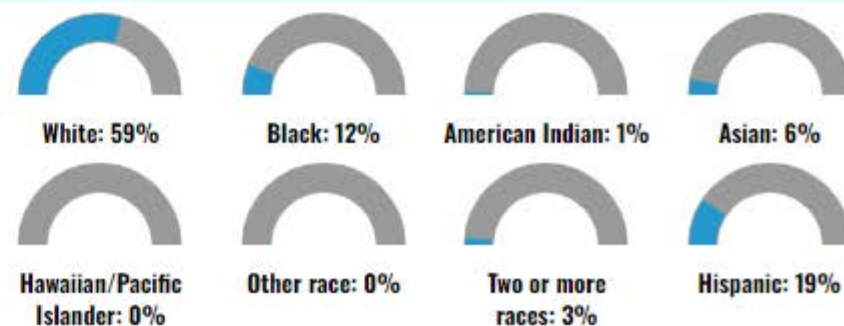
A3 Landscape



COMMUNITY INFORMATION



BREAKDOWN BY RACE



LANGUAGES SPOKEN AT HOME

LANGUAGE	PERCENT
English	78%
Spanish	14%
French, Haitian, or Cajun	1%
Russian, Polish, or Other Slavic	1%

BREAKDOWN BY AGE

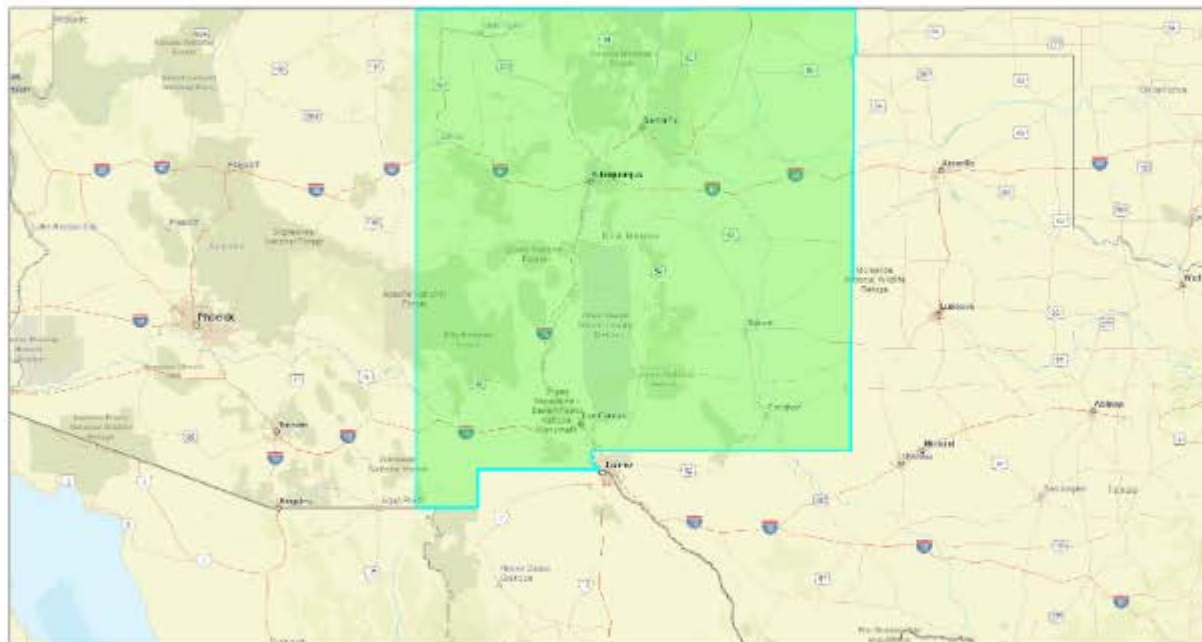
EJScreen Community Report

This report provides environmental and socioeconomic information for user-defined areas, and combines that data into environmental justice and supplemental indexes.

XX

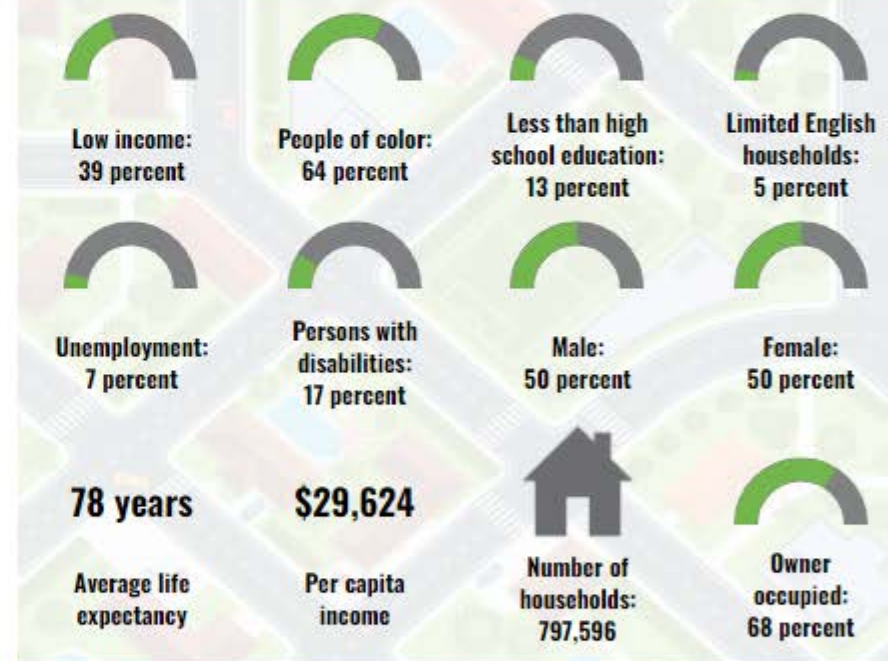
the User Specified Area
 Population: 2,109,366
 Area in square miles: 121768.76

A3 Landscape



May 29, 2024
 Project 1
 14,622,324
 0 45 90 180 360 mi
 0 75 150 300 km
Base File: A3Landscape, Doc: Doc001, Date: 10/11/2010, NOAA, USGS, Bureau of Land Management, EPA, IPR, USFWS

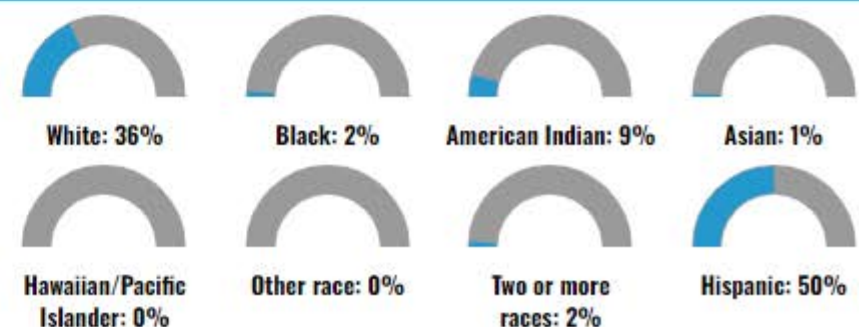
COMMUNITY INFORMATION



LANGUAGES SPOKEN AT HOME

LANGUAGE	PERCENT
English	67%
Spanish	26%
Other and Unspecified	5%
Total Non-English	33%

BREAKDOWN BY RACE



BREAKDOWN BY AGE

Population 65 Years and Over in the United States		United States[®] Census Bureau
Note: The table shown may have been modified by user selections. Some information may be missing.		
DATA NOTES		
TABLE ID:	S0103	
SURVEY/PROGRAM:	American Community Survey	
VINTAGE:	2022	
DATASET:	ACSST5Y2022	
PRODUCT:	ACS 5-Year Estimates Subject Tables	
UNIVERSE:	None	
MLA:	U.S. Census Bureau. "Population 65 Years and Over in the United States." American Community Survey, ACS 5-Year Estimates Subject Tables, Table S0103, 2022, https://data.census.gov/table/ACSST5Y2022.S0103?q=newmexico&g=010XX00US&d=ACS 5-Year Estimates Subject Tables&moe=false . Accessed on May 29, 2024.	
FTP URL:	None	
API URL:	https://api.census.gov/data/2022/acs/acs5/subject	
USER SELECTIONS		
GEOS	New Mexico; United States	
DATASETS	ACS 5-Year Estimates Subject Tables	
EXCLUDED COLUMNS		
	United States!!Total!!Margin of Error	
	United States!!65 years and over!!Margin of Error	
	New Mexico!!Total!!Margin of Error	
	New Mexico!!65 years and over!!Margin of Error	
APPLIED FILTERS		
	None	
APPLIED SORTS		
	None	
PIVOT & GROUPING		
PIVOT COLUMNS	None	
PIVOT MODE	Off	
ROW GROUPS	None	
VALUE COLUMNS	None	

Table: ACSST5Y2022.S0103

WEB ADDRESS	https://data.census.gov/table/ACSST5Y2022.S0103?q=new%20mexico&g=010XX00US&d=ACS%205-Year%20Estimates%20Subject%20Tables&moe=false
TABLE NOTES	
	<p>Although the American Community Survey (ACS) produces population, demographic and housing unit estimates, the decennial census is the official source of population totals for April 1st of each decennial year. In between censuses, the Census Bureau's Population Estimates Program produces and disseminates the official estimates of the population for the nation, states, counties, cities, and towns and estimates of housing units for states and counties.</p>
	<p>Information about the American Community Survey (ACS) can be found on the ACS website. Supporting documentation including code lists, subject definitions, data accuracy, and statistical testing, and a full list of ACS tables and table shells (without estimates) can be found on the Technical Documentation section of the ACS website.</p> <p>Sample size and data quality measures (including coverage rates, allocation rates, and response rates) can be found on the American Community Survey website in the Methodology section.</p>
	<p>Source: U.S. Census Bureau, 2018-2022 American Community Survey 5-Year Estimates</p>
	<p>Data are based on a sample and are subject to sampling variability. The degree of uncertainty for an estimate arising from sampling variability is represented through the use of a margin of error. The value shown here is the 90 percent margin of error. The margin of error can be interpreted roughly as providing a 90 percent probability that the interval defined by the estimate minus the margin of error and the estimate plus the margin of error (the lower and upper confidence bounds) contains the true value. In addition to sampling variability, the ACS estimates are subject to nonsampling error (for a discussion of nonsampling variability, see ACS Technical Documentation). The effect of nonsampling error is not represented</p>
	<p>The 65 years and over column of data refers to the age of the householder for the estimates of households, occupied housing units, owner-occupied housing units, and renter-occupied housing units lines.</p>
	<p>The age specified on the population 15 years and over, population 25 years and over, population 30 years and over, civilian population 18 years and over, civilian population 5 years and over, population 1 years and over, population 5 years and over, and population 16 years and over lines refer to the data shown in the "Total" column while the second column is limited to the population 65 years and over.</p>
	<p>The Census Bureau introduced a new set of disability questions in the 2008 ACS questionnaire. Accordingly, comparisons of disability data from 2008 or later with data from prior years are not recommended. For more information on these questions and their evaluation in the 2006 ACS Content Test, see the Evaluation Report Covering Disability.</p>
	<p>Telephone service data are not available for certain geographic areas due to problems with data collection of this question that occurred in 2019. Both ACS 1-year and ACS 5-year files were affected. It may take several years in the ACS 5-year files until the estimates are available for the geographic areas affected.</p>

Table: ACSST5Y2022.S0103

	The categories for relationship to householder were revised in 2019. For more information see Revisions to the Relationship to Household item.
	The 2018-2022 American Community Survey (ACS) data generally reflect the March 2020 Office of Management and Budget (OMB) delineations of metropolitan and micropolitan statistical areas. In certain instances, the names, codes, and boundaries of the principal cities shown in ACS tables may differ from the OMB delineation lists due to differences in the effective dates of the geographic entities.
	Estimates of urban and rural populations, housing units, and characteristics reflect boundaries of urban areas defined based on 2020 Census data. As a result, data for urban and rural areas from the ACS do not necessarily reflect the results of ongoing urbanization.
	Explanation of Symbols:- The estimate could not be computed because there were an insufficient number of sample observations. For a ratio of medians estimate, one or both of the median estimates falls in the lowest interval or highest interval of an open-ended distribution. For a 5-year median estimate, the margin of error associated with a median was larger than the median itself.N The estimate or margin of error cannot be displayed because there were an insufficient number of sample cases in the selected geographic area. (X) The estimate or margin of error is not applicable or not available.median- The median falls in the lowest interval of an open-ended distribution (for example "2,500-")median+ The median falls in the highest interval of an open-ended distribution (for example "250,000+").** The margin of error could not be computed because there were an insufficient number of sample observations.*** The margin of error could not be computed because the median falls in the lowest interval or highest interval of an open-ended distribution.***** A margin of error is not appropriate because the corresponding estimate is controlled to an independent population or housing
COLUMN NOTES	None

Table: ACSST5Y2022.S0103

Label	United States		New Mexico	
	Total	65 years and over	Total	65 years and over
	Estimate	Estimate	Estimate	Estimate
Total population	331,097,593	54,737,648	2,112,463	382,672
SEX AND AGE				
Male	49.6%	44.7%	49.8%	45.9%
Female	50.4%	55.3%	50.2%	54.1%
Median age (years)	38.5	73.1	38.6	72.9
RACE AND HISPANIC OR LATINO ORIGIN				
One race	91.2%	95.9%	83.5%	88.6%
White	65.9%	78.4%	59.2%	71.0%
Black or African American	12.5%	9.2%	2.1%	1.4%
American Indian and Alaska Native	0.8%	0.5%	9.4%	5.7%
Asian	5.8%	4.7%	1.6%	1.1%
Native Hawaiian and Other Pacific Islander	0.2%	0.1%	0.1%	0.1%
Some other race	6.0%	3.0%	11.1%	9.3%
Two or more races	8.8%	4.1%	16.5%	11.4%
Hispanic or Latino origin (of any race)	18.7%	8.7%	49.8%	33.3%
White alone, not Hispanic or Latino	58.9%	75.2%	35.6%	56.8%
RELATIONSHIP				
Population in households	322,994,302	53,055,394	2,069,657	375,702
Householder or spouse	57.4%	89.0%	55.7%	89.4%
Parent	1.3%	4.9%	1.2%	4.0%
Other relatives	35.1%	3.6%	36.8%	3.4%
Nonrelatives	6.2%	2.5%	6.3%	3.2%
Unmarried partner	2.7%	1.1%	3.3%	1.5%
HOUSEHOLDS BY TYPE				
Households	125,736,353	33,591,776	812,852	242,762
Family households	64.8%	53.9%	61.9%	51.8%
Married-couple family	47.5%	43.3%	42.0%	40.6%

Table: ACSST5Y2022.S0103

	United States		New Mexico	
	Total	65 years and over	Total	65 years and over
Label	Estimate	Estimate	Estimate	Estimate
Female householder, no spouse present, family	12.2%	8.0%	13.8%	8.3%
Nonfamily households	35.2%	46.1%	38.1%	48.2%
Householder living alone	28.3%	43.0%	31.6%	44.3%
MARITAL STATUS				
Population 15 years and over	270,721,372	54,737,648	1,723,724	382,672
Now married, except separated	47.8%	55.3%	43.1%	52.6%
Widowed	5.6%	22.1%	5.9%	20.8%
Divorced	10.7%	14.9%	13.2%	18.5%
Separated	1.7%	1.2%	1.6%	1.0%
Never married	34.1%	6.4%	36.2%	7.2%
EDUCATIONAL ATTAINMENT				
Population 25 years and over	226,600,992	54,737,648	1,433,908	382,672
Less than high school graduate	10.9%	13.2%	12.9%	14.7%
High school graduate, GED, or alternative	26.4%	30.3%	25.9%	25.0%
Some college or associate's degree	28.5%	26.9%	32.1%	28.5%
Bachelor's degree or higher	34.3%	29.7%	29.1%	31.9%
RESPONSIBILITY FOR GRANDCHILDREN UNDER 18 YEARS				
Population 30 years and over	203,927,181	54,737,648	1,293,442	382,672
Living with grandchild(ren)	3.4%	5.0%	3.8%	4.5%
Responsible for grandchild(ren)	1.1%	1.2%	1.7%	1.6%
VETERAN STATUS				
Civilian population 18 years and over	256,649,167	54,737,648	1,625,139	382,672
Civilian veteran	6.6%	15.4%	8.4%	18.0%
DISABILITY STATUS				

Table: ACSST5Y2022.S0103

	United States		New Mexico	
	Total	65 years and over	Total	65 years and over
Label	Estimate	Estimate	Estimate	Estimate
Civilian noninstitutionalized population	326,147,510	53,352,418	2,076,263	377,626
With any disability	12.9%	33.3%	16.3%	38.3%
No disability	87.1%	66.7%	83.7%	61.7%
RESIDENCE 1 YEAR AGO				
Population 1 year and over	327,615,004	54,737,648	2,091,251	382,672
Same house	86.9%	93.9%	87.5%	94.0%
Different house in the United States	12.6%	5.8%	12.1%	5.6%
Same county	7.0%	3.2%	6.7%	2.8%
Different county	5.6%	2.6%	5.4%	2.8%
Same state	3.2%	1.4%	2.3%	1.0%
Different state	2.3%	1.2%	3.1%	1.8%
Abroad	0.6%	0.3%	0.5%	0.3%
PLACE OF BIRTH, NATIVITY AND CITIZENSHIP STATUS, AND YEAR OF ENTRY				
Total population	331,097,593	54,737,648	2,112,463	382,672
Native	285,816,522	47,117,053	1,918,143	348,953
Foreign born	45,281,071	7,620,595	194,320	33,719
Entered 2010 or later	26.8%	7.8%	21.1%	5.2%
Entered 2000 to 2009	24.1%	8.8%	24.6%	6.2%
Entered before 2000	49.1%	83.4%	54.3%	88.6%
Naturalized U.S. citizen	52.3%	76.6%	44.5%	68.7%
Not a U.S. citizen	47.7%	23.4%	55.5%	31.3%
LANGUAGE SPOKEN AT HOME AND ABILITY TO SPEAK ENGLISH				
Population 5 years and over	312,092,668	54,737,648	1,996,536	382,672
English only	78.3%	84.8%	67.4%	66.3%
Language other than English	21.7%	15.2%	32.6%	33.7%
Speak English less than "very well"	8.2%	8.6%	8.8%	10.3%
EMPLOYMENT STATUS				

Table: ACSST5Y2022.S0103

	United States		New Mexico	
	Total	65 years and over	Total	65 years and over
Label	Estimate	Estimate	Estimate	Estimate
Civilian population 16 years and over	265,175,595	54,737,648	1,682,451	382,672
In labor force	63.3%	18.7%	57.2%	16.6%
Employed	59.9%	17.9%	53.7%	15.9%
Unemployed	3.4%	0.7%	3.6%	0.7%
Percent of civilian labor force	5.3%	4.0%	6.2%	4.3%
Not in labor force	36.7%	81.3%	42.8%	83.4%
INCOME IN THE PAST 12 MONTHS (IN 2022 INFLATION-ADJUSTED DOLLARS)				
Households	125,736,353	33,591,776	812,852	242,762
With earnings	77.6%	37.9%	72.6%	34.9%
Mean earnings (dollars)	107,743	73,218	80,643	60,381
With Social Security income	31.2%	88.3%	35.3%	89.0%
Mean Social Security income (dollars)	22,683	24,678	20,979	22,759
With Supplemental Security Income	5.1%	6.5%	6.1%	6.9%
Mean Supplemental Security Income (dollars)	11,137	11,053	10,768	10,205
With cash public assistance income	2.7%	1.9%	3.7%	2.5%
Mean cash public assistance income (dollars)	4,243	3,628	3,294	2,679
With retirement income	23.1%	56.3%	25.0%	54.0%
Mean retirement income (dollars)	32,050	34,177	32,865	34,478
With Food Stamp/SNAP benefits	11.5%	9.3%	18.1%	12.1%
POVERTY STATUS IN THE PAST 12 MONTHS				

Table: ACSST5Y2022.S0103

	United States		New Mexico	
	Total	65 years and over	Total	65 years and over
Label	Estimate	Estimate	Estimate	Estimate
Population for whom poverty status is determined	323,275,448	53,352,363	2,070,966	377,626
Below 100 percent of the poverty level	12.5%	10.0%	18.3%	12.9%
100 to 149 percent of the poverty level	8.0%	8.6%	10.8%	10.0%
At or above 150 percent of the poverty level	79.5%	81.5%	70.9%	77.1%
Occupied housing units	125,736,353	33,591,776	812,852	242,762
HOUSING TENURE				
Owner-occupied housing units	64.8%	78.3%	68.7%	82.2%
Renter-occupied housing units	35.2%	21.7%	31.3%	17.8%
Average household size of owner-occupied unit	2.67	1.96	2.64	1.99
Average household size of renter-occupied unit	2.38	1.56	2.34	1.59
SELECTED CHARACTERISTICS				
No telephone service available	1.0%	1.2%	1.7%	1.7%
1.01 or more occupants per room	3.4%	0.9%	3.3%	1.1%
Owner-occupied housing units	81,497,760	26,311,020	558,179	199,573
SELECTED MONTHLY OWNER COSTS AS A PERCENTAGE OF HOUSEHOLD INCOME IN THE PAST 12 MONTHS				
Less than 30 percent	78.1%	74.5%	79.8%	79.2%
30 percent or more	21.9%	25.5%	20.2%	20.8%
OWNER CHARACTERISTICS				
Median value (dollars)	281,900	263,300	216,000	220,800

Table: ACSST5Y2022.S0103

Label	United States		New Mexico	
	Total	65 years and over	Total	65 years and over
	Estimate	Estimate	Estimate	Estimate
Median selected monthly owner costs with a mortgage (dollars)	1,828	1,591	1,457	1,338
Median selected monthly owner costs without a mortgage (dollars)	584	576	413	423
Renter-occupied housing units	44,238,593	7,280,756	254,673	43,189
GROSS RENT AS A PERCENTAGE OF HOUSEHOLD INCOME IN THE PAST 12 MONTHS				
Less than 30 percent	53.6%	44.9%	56.1%	50.8%
30 percent or more	46.4%	55.1%	43.9%	49.2%
GROSS RENT				
Median gross rent (dollars)	1,268	1,020	966	829

Mean Income in the Past 12 Months (in 2022 Inflation-Adjusted Dollars)		United States® Census Bureau
Note: The table shown may have been modified by user selections. Some information may be missing.		
DATA NOTES		
TABLE ID:	S1902	
SURVEY/PROGRAM:	American Community Survey	
VINTAGE:	2022	
DATASET:	ACSST5Y2022	
PRODUCT:	ACS 5-Year Estimates Subject Tables	
UNIVERSE:	None	
MLA:	U.S. Census Bureau. "Mean Income in the Past 12 Months (in 2022 Inflation-Adjusted Dollars)." American Community Survey, ACS 5-Year Estimates Subject Tables, Table S1902, 2022, https://data.census.gov/table/ACSST5Y2022.S1902?q=new+mexico&t=Earnings+(Individuals):Income+(Households,+Families,+Individuals):Income+and+Earnings:Income+and+Poverty&g=010XX00US&d=ACS+5-Year+Estimates+Subject+Tables&moe=false . Accessed on May 29, 2024.	
FTP URL:	None	
API URL:	https://api.census.gov/data/2022/acs/acs5/subject	
USER SELECTIONS		
GEOS	New Mexico; United States	
DATASETS	ACS 5-Year Estimates Subject Tables	
TOPICS	Income (Households, Families, Individuals); Earnings (Individuals); Income and Earnings; Income and Poverty	
EXCLUDED COLUMNS		
	United States!!Number!!Margin of Error	
	United States!!Percent Distribution!!Margin of Error	
	United States!!Mean income (dollars)!!Margin of Error	
	New Mexico!!Number!!Margin of Error	
	New Mexico!!Percent Distribution!!Margin of Error	
	New Mexico!!Mean income (dollars)!!Margin of Error	
APPLIED FILTERS		
	None	
APPLIED SORTS		
	None	
PIVOT & GROUPING		
PIVOT COLUMNS	None	

Table: ACSST5Y2022.S1902

PIVOT MODE	Off
ROW GROUPS	None
VALUE COLUMNS	None
WEB ADDRESS	https://data.census.gov/table/ACSST5Y2022.S1902?q=new%20mexico&t=Earnings%20(Individuals):Income%20(Households,%20Families,%20Individuals):Income%20and%20Earnings:Income%20and%20Poverty&g=010XX00US&d=ACS%205-Year%20Estimates%20Subject%20Tables&mqe=false
TABLE NOTES	
	Although the American Community Survey (ACS) produces population, demographic and housing unit estimates, the decennial census is the official source of population totals for April 1st of each decennial year. In between censuses, the Census Bureau's Population Estimates Program produces and disseminates the official estimates of the population for the nation, states, counties, cities, and towns and estimates of housing units for states and counties.
	Information about the American Community Survey (ACS) can be found on the ACS website. Supporting documentation including code lists, subject definitions, data accuracy, and statistical testing, and a full list of ACS tables and table shells (without estimates) can be found on the Technical Documentation section of the ACS website. Sample size and data quality measures (including coverage rates, allocation rates, and response rates) can be found on the American Community Survey website in the Methodology section.
	Source: U.S. Census Bureau, 2018-2022 American Community Survey 5-Year Estimates
	Data are based on a sample and are subject to sampling variability. The degree of uncertainty for an estimate arising from sampling variability is represented through the use of a margin of error. The value shown here is the 90 percent margin of error. The margin of error can be interpreted roughly as providing a 90 percent probability that the interval defined by the estimate minus the margin of error and the estimate plus the margin of error (the lower and upper confidence bounds) contains the true value. In addition to sampling variability, the ACS estimates are subject to nonsampling error (for a discussion of nonsampling variability, see ACS Technical Documentation). The effect of nonsampling error is not represented
	Between 2018 and 2019 the American Community Survey retirement income question changed. These changes resulted in an increase in both the number of households reporting retirement income and higher aggregate retirement income at the national level. For more information see Changes to the Retirement Income Question .
	The categories for relationship to householder were revised in 2019. For more information see Revisions to the Relationship to Household item

Table: ACSST5Y2022.S1902

	<p>In 2019, methodological changes were made to the class of worker question. These changes involved modifications to the question wording, the category wording, and the visual format of the categories on the questionnaire. The format for the class of worker categories are now listed under the headings "Private Sector Employee," "Government Employee," and "Self-Employed or Other." Additionally, the category of Active Duty was added as one of the response categories under the "Government Employee" section for the mail questionnaire. For more detailed information about the 2019 changes, see the 2016 American Community Survey Content Test Report for Class of Worker located at</p>
	<p>The 2018-2022 American Community Survey (ACS) data generally reflect the March 2020 Office of Management and Budget (OMB) delineations of metropolitan and micropolitan statistical areas. In certain instances, the names, codes, and boundaries of the principal cities shown in ACS tables may differ from the OMB delineation lists due to differences in the</p>
	<p>Estimates of urban and rural populations, housing units, and characteristics reflect boundaries of urban areas defined based on 2020 Census data. As a result, data for urban and rural areas from the ACS do not necessarily reflect the results of</p>
	<p>Explanation of Symbols:- The estimate could not be computed because there were an insufficient number of sample observations. For a ratio of medians estimate, one or both of the median estimates falls in the lowest interval or highest interval of an open-ended distribution. For a 5-year median estimate, the margin of error associated with a median was larger than the median itself.N The estimate or margin of error cannot be displayed because there were an insufficient number of sample cases in the selected geographic area. (X) The estimate or margin of error is not applicable or not available.median- The median falls in the lowest interval of an open-ended distribution (for example "2,500-")median+ The median falls in the highest interval of an open-ended distribution (for example "250,000+").** The margin of error could not be computed because there were an insufficient number of sample observations.*** The margin of error could not be computed because the median falls in the lowest interval or highest interval of an open-ended distribution.***** A margin of error is not appropriate because the corresponding estimate is controlled to an independent population or housing</p>
COLUMN NOTES	None

Table: ACSST5Y2022.S1902

Label	United States			New Mexico		
	Number	Percent Distribution	Mean income (dollars)	Number	Percent Distribution	Mean income (dollars)
	Estimate	Estimate	Estimate	Estimate	Estimate	Estimate
HOUSEHOLD INCOME						
All households	125,736,353	125,736,353	105,833	812,852	812,852	81,035
With earnings	97,603,973	77.6%	107,743	589,849	72.6%	80,643
With wages or salary income	94,173,527	74.9%	104,919	561,534	69.1%	79,415
With self-employment income	13,845,133	11.0%	45,934	82,226	10.1%	36,157
With interest, dividends, or net rental income	24,870,021	19.8%	27,142	142,838	17.6%	24,590
With Social Security income	39,273,890	31.2%	22,683	286,900	35.3%	20,979
With Supplemental Security Income (SSI)	6,457,476	5.1%	11,137	49,452	6.1%	10,768
With cash public assistance income or Food Stamps/SNAP	15,757,876	12.5%	(X)	155,029	19.1%	(X)
With cash public assistance	3,339,152	2.7%	4,243	30,314	3.7%	3,294
With retirement income	29,084,404	23.1%	32,050	203,616	25.0%	32,865
With other types of income	13,744,915	10.9%	15,018	91,443	11.2%	15,820
FAMILY INCOME BY NUMBER OF WORKERS IN FAMILY						
All families	81,432,908	81,432,908	124,530	503,154	503,154	95,066
No workers	12,008,873	14.7%	69,356	96,472	19.2%	61,914
1 worker	25,756,665	31.6%	95,889	186,623	37.1%	75,357
2 workers, both spouses worked	25,551,878	31.4%	165,832	125,166	24.9%	139,026
2 workers, other	8,293,324	10.2%	107,642	52,075	10.3%	84,838
3 or more workers, both spouses worked	7,140,849	8.8%	185,665	29,572	5.9%	150,825
3 or more workers, other	2,681,319	3.3%	142,594	13,246	2.6%	114,531
PER CAPITA INCOME BY RACE AND HISPANIC OR LATINO ORIGIN						
Total population	331,097,593	331,097,593	41,261	2,112,463	2,112,463	32,667
One race--						
White	218,123,424	65.9%	46,218	1,250,614	59.2%	37,726
Black or African American	41,288,572	12.5%	28,689	44,894	2.1%	31,393
American Indian and Alaska Native	2,786,431	0.8%	24,901	198,140	9.4%	19,521
Asian	19,112,979	5.8%	51,224	34,400	1.6%	41,864
Native Hawaiian and Other Pacific Islander	624,863	0.2%	30,940	1,849	0.1%	48,917
Some other race	20,018,544	6.0%	24,544	233,978	11.1%	24,561
Two or more races	29,142,780	8.8%	28,713	348,588	16.5%	26,601

Table: ACSST5Y2022.S1902

	United States			New Mexico		
	Number	Percent Distribution	Mean income (dollars)	Number	Percent Distribution	Mean income (dollars)
Label	Estimate	Estimate	Estimate	Estimate	Estimate	Estimate
Hispanic or Latino origin (of any race)	61,755,866	18.7%	26,124	1,051,626	49.8%	25,243
White alone, not Hispanic or Latino	194,886,464	58.9%	48,525	752,424	35.6%	45,802

Language Spoken at Home		United States® Census Bureau
Note: The table shown may have been modified by user selections. Some information may be missing.		
DATA NOTES		
TABLE ID:	S1601	
SURVEY/PROGRAM:	American Community Survey	
VINTAGE:	2022	
DATASET:	ACSST5Y2022	
PRODUCT:	ACS 5-Year Estimates Subject Tables	
UNIVERSE:	None	
MLA:	U.S. Census Bureau. "Language Spoken at Home." American Community Survey, ACS 5-Year Estimates Subject Tables, Table S1601, 2022, https://data.census.gov/table/ACSST5Y2022.S1601?q=new mexico&g=010XX00US&d=ACS 5-Year Estimates Subject Tables&mo=false . Accessed on May 29, 2024.	
FTP URL:	None	
API URL:	https://api.census.gov/data/2022/acs/acs5/subject	
USER SELECTIONS		
GEOS	New Mexico; United States	
DATASETS	ACS 5-Year Estimates Subject Tables	
EXCLUDED COLUMNS		
	United States!!Total!!Margin of Error	
	United States!!Percent!!Margin of Error	
	United States!!Percent of specified language speakers!!Speak English only or speak English "very well"!!Margin of Error	
	United States!!Percent of specified language speakers!!Percent speak English only or speak English "very well"!!Margin of Error	
	United States!!Percent of specified language speakers!!Speak English less than "very well"!!Margin of Error	
	United States!!Percent of specified language speakers!!Percent speak English less than "very well"!!Margin of Error	
	New Mexico!!Total!!Margin of Error	
	New Mexico!!Percent!!Margin of Error	
	New Mexico!!Percent of specified language speakers!!Speak English only or speak English "very well"!!Margin of Error	
	New Mexico!!Percent of specified language speakers!!Percent speak English only or speak English "very well"!!Margin of Error	

Table: ACSST5Y2022.S1601

	New Mexico!!Percent of specified language speakers!!Speak English less than "very well"!!Margin of Error
	New Mexico!!Percent of specified language speakers!!Percent speak English less than "very well"!!Margin of Error
APPLIED FILTERS	None
APPLIED SORTS	None
PIVOT & GROUPING	
PIVOT COLUMNS	None
PIVOT MODE	Off
ROW GROUPS	None
VALUE COLUMNS	None
WEB ADDRESS	https://data.census.gov/table/ACSST5Y2022.S1601?q=new%20mexico&g=010XX00US&d=ACS%205-Year%20Estimates%20Subiect%20Tables&moe=false
TABLE NOTES	
	Although the American Community Survey (ACS) produces population, demographic and housing unit estimates, the decennial census is the official source of population totals for April 1st of each decennial year. In between censuses, the Census Bureau's Population Estimates Program produces and disseminates the official estimates of the population for the nation, states, counties, cities, and towns and estimates of housing units for states and counties.
	Information about the American Community Survey (ACS) can be found on the ACS website. Supporting documentation including code lists, subject definitions, data accuracy, and statistical testing, and a full list of ACS tables and table shells (without estimates) can be found on the Technical Documentation section of the ACS website. Sample size and data quality measures (including coverage rates, allocation rates, and response rates) can be found on the American Community Survey website in the Methodology section.
	Source: U.S. Census Bureau, 2018-2022 American Community Survey 5-Year Estimates
	Data are based on a sample and are subject to sampling variability. The degree of uncertainty for an estimate arising from sampling variability is represented through the use of a margin of error. The value shown here is the 90 percent margin of error. The margin of error can be interpreted roughly as providing a 90 percent probability that the interval defined by the estimate minus the margin of error and the estimate plus the margin of error (the lower and upper confidence bounds) contains the true value. In addition to sampling variability, the ACS estimates are subject to nonsampling error (for a discussion of nonsampling variability, see ACS Technical Documentation). The effect of nonsampling error is not represented

Table: ACSST5Y2022.S1601

	<p>The 2018-2022 American Community Survey (ACS) data generally reflect the March 2020 Office of Management and Budget (OMB) delineations of metropolitan and micropolitan statistical areas. In certain instances, the names, codes, and boundaries of the principal cities shown in ACS tables may differ from the OMB delineation lists due to differences in the effective dates of the geographic entities.</p>
	<p>Estimates of urban and rural populations, housing units, and characteristics reflect boundaries of urban areas defined based on 2020 Census data. As a result, data for urban and rural areas from the ACS do not necessarily reflect the results of ongoing urbanization.</p>
	<p>Explanation of Symbols:- The estimate could not be computed because there were an insufficient number of sample observations. For a ratio of medians estimate, one or both of the median estimates falls in the lowest interval or highest interval of an open-ended distribution. For a 5-year median estimate, the margin of error associated with a median was larger than the median itself.N The estimate or margin of error cannot be displayed because there were an insufficient number of sample cases in the selected geographic area. (X) The estimate or margin of error is not applicable or not available.median- The median falls in the lowest interval of an open-ended distribution (for example "2,500-")median+ The median falls in the highest interval of an open-ended distribution (for example "250,000+").** The margin of error could not be computed because there were an insufficient number of sample observations.*** The margin of error could not be computed because the median falls in the lowest interval or highest interval of an open-ended distribution.***** A margin of error is not appropriate because the corresponding estimate is controlled to an independent population or housing</p>
<p>COLUMN NOTES</p>	<p>None</p>

Label	United States						New Mexico					
	Total	Percent	Percent of specified language speakers				Total	Percent	Percent of specified language speakers			
	Estimate	Estimate	Speak English only or speak English "very well"	Percent speak English only or speak English "very well"	Speak English less than "very well"	Percent speak English less than "very well"	Estimate	Estimate	Speak English only or speak English "very well"	Percent speak English only or speak English "very well"	Speak English less than "very well"	Percent speak English less than "very well"
Population 5 years and over	312,092,668	(X)	286,387,822	91.8%	25,704,846	8.2%	1,996,536	(X)	1,820,003	91.2%	176,533	8.8%
Speak only English	244,232,103	78.3%	(X)	(X)	(X)	(X)	1,346,155	67.4%	(X)	(X)	(X)	(X)
Speak a language other than English	67,860,565	21.7%	42,155,719	62.1%	25,704,846	37.9%	650,381	32.6%	473,848	72.9%	176,533	27.1%
SPEAK A LANGUAGE OTHER THAN ENGLISH												
Spanish	41,434,050	13.3%	25,258,199	61.0%	16,175,851	39.0%	507,789	25.4%	367,960	72.5%	139,829	27.5%
5 to 17 years old	8,244,756	2.6%	6,581,556	79.8%	1,663,200	20.2%	75,841	3.8%	61,589	81.2%	14,252	18.8%
18 to 64 years old	29,103,987	9.3%	16,976,355	58.3%	12,127,632	41.7%	329,700	16.5%	233,615	70.9%	96,085	29.1%
65 years old and over	4,085,307	1.3%	1,700,288	41.6%	2,385,019	58.4%	102,248	5.1%	72,756	71.2%	29,492	28.8%
Other Indo-European languages	11,697,220	3.7%	8,146,926	69.6%	3,550,294	30.4%	20,877	1.0%	17,133	82.1%	3,744	17.9%
5 to 17 years old	1,613,160	0.5%	1,277,083	79.2%	336,077	20.8%	1,641	0.1%	1,418	86.4%	223	13.6%
18 to 64 years old	8,041,880	2.6%	5,755,139	71.6%	2,286,741	28.4%	13,717	0.7%	11,223	81.8%	2,494	18.2%
65 years old and over	2,042,180	0.7%	1,114,704	54.6%	927,476	45.4%	5,519	0.3%	4,492	81.4%	1,027	18.6%
Asian and Pacific Island languages	11,013,422	3.5%	6,134,951	55.7%	4,878,471	44.3%	21,069	1.1%	13,424	63.7%	7,645	36.3%
5 to 17 years old	1,283,050	0.4%	970,811	75.7%	312,239	24.3%	2,347	0.1%	1,776	75.7%	571	24.3%
18 to 64 years old	7,890,219	2.5%	4,575,172	58.0%	3,315,047	42.0%	15,716	0.8%	10,244	65.2%	5,472	34.8%
65 years old and over	1,840,153	0.6%	588,968	32.0%	1,251,185	68.0%	3,006	0.2%	1,404	46.7%	1,602	53.3%
Other languages	3,715,873	1.2%	2,615,643	70.4%	1,100,230	29.6%	100,646	5.0%	75,331	74.8%	25,315	25.2%
5 to 17 years old	637,888	0.2%	522,529	81.9%	115,359	18.1%	12,812	0.6%	9,781	76.3%	3,031	23.7%
18 to 64 years old	2,706,726	0.9%	1,879,672	69.4%	827,054	30.6%	69,802	3.5%	54,660	78.3%	15,142	21.7%
65 years old and over	371,259	0.1%	213,442	57.5%	157,817	42.5%	18,032	0.9%	10,890	60.4%	7,142	39.6%
CITIZENS 18 YEARS AND OVER												
All citizens 18 years old and over	238,133,933	(X)	226,216,566	95.0%	11,917,367	5.0%	1,538,095	(X)	1,438,510	93.5%	99,585	6.5%
Speak only English	199,359,841	83.7%	(X)	(X)	(X)	(X)	1,070,962	69.6%	(X)	(X)	(X)	(X)
Speak a language other than English	38,774,092	16.3%	26,856,725	69.3%	11,917,367	30.7%	467,133	30.4%	367,548	78.7%	99,585	21.3%
Spanish	22,746,957	9.6%	16,172,882	71.1%	6,574,075	28.9%	355,271	23.1%	282,960	79.6%	72,311	20.4%
Other languages	16,027,135	6.7%	10,683,843	66.7%	5,343,292	33.3%	111,862	7.3%	84,588	75.6%	27,274	24.4%

Limited English Speaking Households		United States[®] Census Bureau
Note: The table shown may have been modified by user selections. Some information may be missing.		
DATA NOTES		
TABLE ID:	S1602	
SURVEY/PROGRAM:	American Community Survey	
VINTAGE:	2022	
DATASET:	ACSST5Y2022	
PRODUCT:	ACS 5-Year Estimates Subject Tables	
UNIVERSE:	None	
MLA:	U.S. Census Bureau. "Limited English Speaking Households." American Community Survey, ACS 5-Year Estimates Subject Tables, Table S1602, 2022, https://data.census.gov/table/ACSST5Y2022.S1602?q=new mexico&g=010XX00US&d=ACS 5-Year Estimates Subject Tables&geo=false . Accessed on May 29, 2024.	
FTP URL:	None	
API URL:	https://api.census.gov/data/2022/acs/acs5/subject	
USER SELECTIONS		
GEOS	New Mexico; United States	
DATASETS	ACS 5-Year Estimates Subject Tables	
EXCLUDED COLUMNS		
	United States!!Total!!Margin of Error	
	United States!!Percent!!Margin of Error	
	United States!!Limited English-speaking households!!Margin of Error	
	United States!!Percent limited English-speaking households!!Margin of Error	
	New Mexico!!Total!!Margin of Error	
	New Mexico!!Percent!!Margin of Error	
	New Mexico!!Limited English-speaking households!!Margin of Error	
	New Mexico!!Percent limited English-speaking households!!Margin of Error	
APPLIED FILTERS		
	None	
APPLIED SORTS		
	None	

Table: ACSST5Y2022.S1602

PIVOT & GROUPING	
PIVOT COLUMNS	None
PIVOT MODE	Off
ROW GROUPS	None
VALUE COLUMNS	None
WEB ADDRESS	
	https://data.census.gov/table/ACSST5Y2022.S1602?q=new%20mexico&g=010XX00US&d=ACS%205-Year%20Estimates%20Subject%20Tables&moe=false
TABLE NOTES	
	Although the American Community Survey (ACS) produces population, demographic and housing unit estimates, the decennial census is the official source of population totals for April 1st of each decennial year. In between censuses, the Census Bureau's Population Estimates Program produces and disseminates the official estimates of the population for the nation, states, counties, cities, and towns and estimates of housing units for states and counties.
	Information about the American Community Survey (ACS) can be found on the ACS website. Supporting documentation including code lists, subject definitions, data accuracy, and statistical testing, and a full list of ACS tables and table shells (without estimates) can be found on the Technical Documentation section of the ACS website. Sample size and data quality measures (including coverage rates, allocation rates, and response rates) can be found on the American Community Survey website in the Methodology section.
	Source: U.S. Census Bureau, 2018-2022 American Community Survey 5-Year Estimates
	Data are based on a sample and are subject to sampling variability. The degree of uncertainty for an estimate arising from sampling variability is represented through the use of a margin of error. The value shown here is the 90 percent margin of error. The margin of error can be interpreted roughly as providing a 90 percent probability that the interval defined by the estimate minus the margin of error and the estimate plus the margin of error (the lower and upper confidence bounds) contains the true value. In addition to sampling variability, the ACS estimates are subject to nonsampling error (for a discussion of nonsampling variability, see ACS Technical Documentation). The effect of nonsampling error is not represented
	A "limited English speaking household" is one in which no member 14 years old and over (1) speaks only English or (2) speaks a non-English language and speaks English "very well." In other words, all members 14 years old and over have at least some difficulty with English. By definition, English-only households cannot belong to this group. Previous Census Bureau data products have referred to these households as "linguistically isolated" and "Households in which no one 14 and over speaks English only or speaks a language other than English at home and speaks English 'very well'." This table is directly comparable to tables from earlier years that used these labels.

Table: ACSST5Y2022.S1602

	The household language assigned to the housing unit is the non-English language spoken by the first person with a non-English language in the following order: reference person, spouse, parent, sibling, child, grandchild, in-law, other relative, unmarried partner, housemate/roommate, roomer/boarder, foster child, or other nonrelative. If no member of the household age 5 and over speaks a language other than English at home then the household language is English only.
	The 2018-2022 American Community Survey (ACS) data generally reflect the March 2020 Office of Management and Budget (OMB) delineations of metropolitan and micropolitan statistical areas. In certain instances, the names, codes, and boundaries of the principal cities shown in ACS tables may differ from the OMB delineation lists due to differences in the effective dates of the geographic entities.
	Estimates of urban and rural populations, housing units, and characteristics reflect boundaries of urban areas defined based on 2020 Census data. As a result, data for urban and rural areas from the ACS do not necessarily reflect the results of ongoing urbanization.
	Explanation of Symbols:- The estimate could not be computed because there were an insufficient number of sample observations. For a ratio of medians estimate, one or both of the median estimates falls in the lowest interval or highest interval of an open-ended distribution. For a 5-year median estimate, the margin of error associated with a median was larger than the median itself.N The estimate or margin of error cannot be displayed because there were an insufficient number of sample cases in the selected geographic area. (X) The estimate or margin of error is not applicable or not available.median- The median falls in the lowest interval of an open-ended distribution (for example "2,500-")median+ The median falls in the highest interval of an open-ended distribution (for example "250,000+").** The margin of error could not be computed because there were an insufficient number of sample observations.*** The margin of error could not be computed because the median falls in the lowest interval or highest interval of an open-ended distribution.***** A margin of error is not appropriate because the corresponding estimate is controlled to an independent population or housing
COLUMN NOTES	None

Table: ACSST5Y2022.S1602

	United States				New Mexico			
	Total	Percent	Limited English-speaking households	Percent limited English-speaking households	Total	Percent	Limited English-speaking households	Percent limited English-speaking households
Label	Estimate	Estimate	Estimate	Estimate	Estimate	Estimate	Estimate	Estimate
All households	125,736,353	(X)	5,280,039	4.2%	812,852	(X)	43,420	5.3%
Households speaking --								
Spanish	16,017,296	12.7%	3,125,134	19.5%	248,528	30.6%	34,317	13.8%
Other Indo-European languages	5,666,996	4.5%	816,170	14.4%	13,090	1.6%	908	6.9%
Asian and Pacific Island languages	4,823,412	3.8%	1,099,641	22.8%	10,594	1.3%	1,951	18.4%
Other languages	1,624,090	1.3%	239,094	14.7%	41,704	5.1%	6,244	15.0%