



**NEW MEXICO ENVIRONMENT DEPARTMENT  
GROUND WATER QUALITY BUREAU**



**PUBLIC INVOLVEMENT PLAN  
(PIP)**

**Facility Name:** Waste Isolation Pilot Plant

**Facility Location:** Highway 128, approximately 26 miles southeast of Carlsbad  
Sections 20, 21, 28, and 29, T22S, R31E

**County:** Eddy

**Responsible Party:** Mr. Gregory Sosson, Acting Manager  
U.S. Department of Energy, Carlsbad Field Office  
P.O. Box 3090  
Carlsbad, NM 88221

**Agency:** Ground Water Quality Bureau  
Pollution Prevention Section

**GWQB Action:** Permitting - Renewal/Modification  
DP-831

**Bureau Contact:** Avery Young, Environmental Scientist  
(505) 827-2909  
avery.young@state.nm.us

Main bureau telephone number:  
(505) 827-2900

**EFFECTIVE DATE:** February 12, 2019

**REVISION DATE:** September 24, 2020

Steve Pullen Digitally signed by Steve Pullen  
Date: 2020.09.24 11:18:42 -0600

for

**Michelle Hunter**  
**Chief, Ground Water Quality Bureau**

## Element 1 – Public Involvement Plan (PIP) Overview

The New Mexico Environment Department (NMED or Department), Ground Water Quality Bureau (Bureau) has developed this PIP for the application for a Ground Water Discharge Permit renewal and modification for the Waste Isolation Pilot Plant (WIPP). The permit for this facility is referred to as DP-831.

The purpose of this PIP is to facilitate NMED’s planning for providing public participation opportunities and information that may be needed for the community to participate in the groundwater discharge permitting process for this facility. This PIP identifies information about the community and resources needed by the Bureau to incorporate community participation activities into the decision-making process. This PIP is developed in accordance with the Department’s *Public Participation Policy* (Policy 07-13 or Policy), and incorporates the requirements of the Policy, as well as applicable regulatory and statutory public participation requirements.

This PIP implements the “elements” set forth in the Policy. Those elements include:

1. An overview of the Public Involvement Plan for the community affected by the activity
2. Bureau contact names and contact information, specifically for Limited English Proficiency (LEP) language assistance services (e.g., translation, interpreters) or for disability accommodations
3. A summary of the regulatory public participation framework associated with discharge permits
4. A description of community/stakeholder groups based on results of a preliminary environmental justice (EJ) screening
5. Details about planned public outreach activities

In developing this PIP, the Bureau assessed community participation needs to ensure appropriate public outreach. This was accomplished by identifying whether there is a combination of environmental and demographic factors that may impact public participation (e.g., low income community, minority community, LEP individuals, linguistically isolated households). Because the community located near the Waste Isolation Pilot Plant includes a significant percentage of Spanish speakers, the Bureau will provide appropriate information in both English and Spanish.

Public involvement associated with groundwater discharge permits occurs at different stages and in different forms. Public involvement activities required by statute or regulation are mandatory and subject to statutory or regulatory deadlines. Mandatory public involvement activities and associated time requirements relevant to this PIP are noted in the *Table of Mandated Public Involvement Activities* at the end of this PIP.

The Bureau plans to conduct the public involvement activities related to the permitting process outlined in the *Table of Public Involvement Activities* below. The activity timeline and dates are tentative and subject to change.

**Table of Public Involvement Activities**

<b>Activity</b>	<b>Date</b>
<p><b>Application Notice (PN-1)</b>  <i>See Table of Mandated Public Involvement Activities at the end of this PIP for details.</i></p>	<p align="center">January 2019</p>
<p><b>Placement of a hardcopy of the PIP in the local field office dependent upon whether the office is open to the public:</b></p> <p>Carlsbad NMED Office            406 N. Guadalupe, Suite C            Carlsbad, NM 88220            Phone (575) 885-9023</p> <p><b>And at the following Document Repositories dependent upon whether the libraries are open to the public:</b></p> <p>Eunice Public Library            1003 Avenue N            Eunice, NM 88231</p> <p>Carlsbad Public Library            1010 S. Halagueno Street            Carlsbad, NM 88220</p>	<p align="center">March 2020</p>
<p><b>Notice of availability of the draft permit and the fact sheet (PN-2)</b>  <i>See Table of Mandated Public Involvement Activities.</i></p>	<p align="center">October 2020</p>
<p><b>Fact Sheet</b>  <i>See Table of Mandated Public Involvement Activities.</i></p>	<p align="center">With the PN-2</p>
<p><b>Response to Comments</b>  <i>See Table of Mandated Public Involvement Activities.</i></p>	<p align="center">30 days after the administrative record is complete and all required information is available</p>

All notices for upcoming meetings or hearings will include a statement that any person who requires assistance, an interpreter, or an auxiliary aid to participate in the process may contact a specifically identified Department person to request those services. Requested interpretation services during the meeting and accommodations or services for persons with disabilities will be arranged to the extent possible.

This PIP is a “living” document that may be amended for numerous reasons, including the consideration of public comments and feedback.

## **Element 2 – Bureau Contact Information**

### **PIP Specific Contacts**

The Bureau contact for this discharge permit is:

Avery Young, Environmental Scientist  
NMED Ground Water Quality Bureau  
P.O. Box 5469  
Santa Fe, New Mexico 87502-5469  
(505) 827-2909  
avery.young@state.nm.us

### **Non-English Language Speaker Assistance**

All public notices will contain a statement that non-English speakers may call the Bureau contact listed above and request language assistance in order to learn more about this permit or the permitting process. Arrangements may be made for document translation or interpretation related to the permitting process as necessary and as resources allow.

### **Individuals with Disabilities Assistance**

All public notices will contain a statement that disabled individuals may call the Bureau contact listed above and request assistance needed to participate in activities associated with the permitting process.

The following information will be provided in public notices so that hearing-impaired callers can contact the Bureau and ask questions about the activity or proceeding: Toll-free numbers are available for TDD or TTY users to access the New Mexico Relay network (for deaf or hearing-impaired callers), 1-800-659-1779; TTY users: 1-800-659-8331.

## Websites

Outreach materials and notices will include links to the following website, where the Bureau's public notices and PIP information are posted:

Ground Water Quality Bureau – <https://www.env.nm.gov/gwqb/public-notice/>

## Element 3 – Regulatory Framework for Public Participation Related to the Permitting Process

The public participation regulatory framework associated with the permitting process is identified in the *Table of Mandated Public Involvement Activities* at the end of this PIP. The Table identifies activities subject to statutory or regulatory deadlines, the associated regulatory requirements, and the associated dates or time periods.

## Element 4 – Description of Community/Stakeholder Groups Based on the EJSCREEN

### EJSCREEN Summary

To provide for adequate public participation opportunities and meaningful involvement of persons in the permitting process, the affected communities must first be identified, informed about proposed environmental actions affecting the community, and invited to share their comments and concerns. The EJSCREEN tool developed by the U.S. Environmental Protection Agency (EPA) helps identify communities that are low income, have minority populations, and have limited English proficiency that may benefit from a variety of approaches for notification and outreach communication. This information is used to help plan for the community's involvement in the public process for environmental activities or actions. In addition to the EJSCREEN results, the Bureau may consider additional information such as the U.S. Census Bureau website or NMED's EJ Mapping Tool.

The Bureau considers the affected community to be those persons living within a block of Southeast New Mexico, which is approximately 9,452 square miles and includes the WIPP Facility, much of Eddy, Lea and Chaves Counties, the cities of Carlsbad, Artesia, Roswell, Lovington, Hobbs, Eunice, and communities in between. The results of the EJSCREEN American Community Survey (ACS) Summary Report, dated May 6, 2020 and attached to this PIP, are summarized in the table below.

**EJSCREEN Results for the Affected Community**

	SE NM Block
Total population	186,214
Total number of households	64,503
Percentage minority population	58%

Percentage Hispanic population	54%
Percentage of the population by race	Population reporting one race: White: .....87% Black: .....2% American Indian: .....1% Asian: .....0% Pacific Islander: .....0% Some Other Race: .....6%
Total number of persons greater than the age of five who speak English “less than very well”	17,975
Percentage of persons greater than the age of five who speak English “less than very well”	10%
Total number of linguistically isolated households	3,536
Percentage of linguistically isolated households (Total number of linguistically isolated households ÷ total number of households X 100)	5.5%
Languages by percentage in linguistically isolated households	Spanish: ..... 97% Other Indo-European languages:2% Asian-Pacific Island languages: 1% Other languages: ..... 1%
Percent linguistically isolated population, New Mexico*:	5.4%
Per capita income	\$24,701
Per capita income, USA**	\$29,979

\* U.S. Census Bureau. 2011-2015 American Community Survey 5-Year Estimates, Table S1602. Limited English-Speaking Households. [https://factfinder.census.gov/bkmk/table/1.0/en/ACS/15\\_5YR/S1602/0400000US35](https://factfinder.census.gov/bkmk/table/1.0/en/ACS/15_5YR/S1602/0400000US35) (date of access: 7/26/2018).

\*\* U.S. Census Bureau. 2015 American Community Survey 1-Year Estimates, Table S0201. Selected Population Profile in the United States. [https://factfinder.census.gov/bkmk/table/1.0/en/ACS/15\\_1YR/S0201/0100000US](https://factfinder.census.gov/bkmk/table/1.0/en/ACS/15_1YR/S0201/0100000US) (date of access: 7/26/2018).

The EJSscreen results indicate that for the affected community the proportion of the population with limited English proficiency (LEP) is significant. The Bureau has therefore performed a LEP assessment for the community and attaches that assessment to this PIP.

Because the affected community has a significant percentage of persons with difficulties communicating in English, the Bureau will consider the language and communication needs of this community when conducting public outreach and participation activities. To accomplish this the Bureau will provide the same information in Spanish as in English in public comment notices, public meeting notices, and other announcements (e.g., radio broadcasts, brochures, signs, postcards) and will strive to make public participation efforts as inclusive as possible within the Bureau’s budget and time limitations. See Element 5 for more specifics on the public outreach and participation activities. The Bureau will also provide the Fact Sheet in both Spanish and English.

## **Element 5 – Detailed Actions and Outreach Activities with the Affected Public**

Public involvement activities required by statute or regulation for this permitting action are listed in the *Table of Mandated Public Involvement Activities* at the end of this document.

### **Public Participation – Outreach Activities**

The Bureau will conduct the following outreach activities during this permitting process:

- Placement of this PIP on the Bureau website and in nearby NMED field office
- Postal mailing and email notices
- Newspaper notices
- Notice posted on NMED website
- Document Repositories
- Fact Sheets

Newspapers utilized in the notification process include:

- Statewide circulation (English): Albuquerque Journal
- Local circulation (English and Spanish): Carlsbad Current-Argus - Eddy County

Local, state, and federal government agencies, tribal entities, and land grant officials will be notified about the permitting process. A list of the agencies and officials notified can be provided upon request.

Indian Tribes, Pueblos and Nations will be notified about the permitting action through the contacts maintained by the Indian Affairs Department at the following URLs:

<http://www.iad.state.nm.us/apaches.html>

<http://www.iad.state.nm.us/navajo.html>

<http://www.iad.state.nm.us/pueblos.html>

Timelines and methods for submitting public comments are specified in the *Table of Mandated Public Involvement Activities*. Final discharge permit documents will be available from the Bureau's contact identified in Element 2 of this PIP.

### **Postal Mailing or E-Mailing of Notices to Persons on the Facility-Specific Mailing List**

The Bureau solicits the names and contact information of interested parties with all public notices. The Bureau maintains those names on a Facility-Specific Mailing List and provides the individuals with information about regulatory activities for the facility. Individuals, organizations, and other interested parties are added to the mailing list as requested. All public notices will contain a statement directing interested individuals to contact the Bureau contact for this permit if they want to be added to the facility specific mailing list.

Other means of outreach such as fliers announcing public comment periods and/or public meetings or hearings may be posted in locations throughout the community (e.g., local businesses, schools, libraries) and on the Department’s website, at the Bureau’s discretion after consideration of public interest and input.

## **Document Repositories**

Hard copies of important documents relevant to this permitting action, and information about how to submit comments and/or participate in any public hearings or meetings that may be held will be made available at the following locations:

- NMED Carlsbad Field Office, 406 N. Guadalupe, Carlsbad, NM 88220
- Carlsbad Public Library, 1010 S. Halagueno Street, Carlsbad, NM 88220
- Eunice Public Library, 1003 Avenue N, Eunice, NM 88231

In the event the State of New Mexico Executive Order 2020-004 issued in response to the Coronavirus Disease 2019 (“COVID-2019”) is still in effect or affects access to the above state offices and/or libraries, please contact Avery Young at (505) 827-2909 for more information. See PIP Contingency Plan below.

## **PIP Contingency Plan**

During a public health emergency or other unforeseen event outside the control of the Department, the Department will make every effort to ensure the public remains involved in and informed of the decision making and permit processes. The purpose of this PIP Contingency Plan is in part to address circumstances when public spaces are closed because of potential human exposure risks. The Department will attempt to identify and utilize alternate methods of document delivery to the public and public viewing when conventional methods and locations are unavailable. When it is unsafe to utilize the physical PIP and document repositories, the Department will consider utilizing electronic delivery methods deemed appropriate for the permitting action. While operating under the PIP Contingency Plan, the PN-2 will include a statement specifying that the PIP Contingency Plan is in effect and that, instead of placing a copy of the PIP for a permitting action in a public location, NMED will make the PIP available to the community by sending the PIP by email or US mail to any community member requesting a copy. An individual may request a copy of the PIP utilizing the Bureau contact information in this public notice. When making such a request, the public is advised to specify how the individual would like the document delivered. If the individual requests a copy of a PIP, they will receive a revised PIP should the PIP be updated in the future. The Department will ensure that during times of potential human exposure risks and the resultant implementation of this PIP Contingency Plan, public meetings and hearings will only be held when or through means by which the Department can ensure the public’s health and safety. The Department will further ensure full adherence to this PIP.



**Attachments**

- LEP Assessment
- A copy of the EJSCREEN ACS Summary Report, and a map showing the area evaluated

## Table of Mandated Public Involvement Activities

Activity	Dates
<p>Application Notice (PN-1): The first notice of the Bureau receipt of the permit application – applicant’s obligations at 20.6.2.3108.B – Bureau’s obligations at 20.6.2.3108.E NMAC</p> <ul style="list-style-type: none"> <li>• Signs (PN-1 synopsis<sup>1</sup> in English and Spanish) - Applicant obligation</li> <li>• Mailings to owners of nearby properties - Applicant obligation</li> <li>• Newspaper ads (PN-1 synopsis in English and Spanish)- Applicant obligation</li> <li>• NMED website <a href="https://www.env.nm.gov/qwqb/public-notice/">https://www.env.nm.gov/qwqb/public-notice/</a></li> <li>• Notice to government agencies</li> <li>• Notice to interested parties</li> </ul>	<p>Within 30 days of the department deeming the application administratively complete</p>
<p>Permit Notice (PN-2): Notice to the public of the availability of a draft permit and a fact sheet for a 45-day review and comment period – the notice will outline the process for requesting a public hearing – obligation at 20.6.2.3108.H NMAC</p> <ul style="list-style-type: none"> <li>• NMED website <a href="https://www.env.nm.gov/qwqb/public-notice/">https://www.env.nm.gov/qwqb/public-notice/</a></li> <li>• Newspaper ads</li> <li>• Notification of interested parties</li> <li>• Notice to government agencies</li> <li>• Notice to Indian Tribes, Pueblos and Nations</li> </ul>	<p>Within 60 days of the department determining the application is technically complete and drafting a permit.</p>
<p>Fact Sheet (for federal facilities, except those with only domestic waste discharges): To include general information regarding the permittee, the facility, the discharge, procedures to be followed in making a final permit determination, the comment period, procedures for a person to request a hearing, contact information to obtain a copy of the draft permit and fact sheet, and a brief summary of the basis of draft permit conditions – obligation at 20.6.2.3108.I NMAC<sup>2</sup></p>	<p>With the PN-2</p>
<p>Public Hearing Notice (if required): Upon the Department’s</p>	<p>Notice of the hearing shall occur at</p>

<sup>1</sup> Suitable for display, the abbreviated format of the PN-1 synopsis does not contain all the information provided by a full public notice, e.g. language assistance or non-discrimination information.

<sup>2</sup> NMED considers the cited regulation to more appropriately reference the information in 20.6.2.3108.K instead distribution methods of 20.6.2.3108.J NMAC.

<p>determination that there is substantial public interest in the permit – obligation at 20.6.2.3108.L NMAC. Notice includes information on how to participate in the hearing, and how to request an interpreter or auxiliary aid if needed.</p> <ul style="list-style-type: none"> <li>• NMED website <a href="https://www.env.nm.gov/gwqb/public-notice/">https://www.env.nm.gov/gwqb/public-notice/</a></li> <li>• Newspapers</li> <li>• Notice to interested parties</li> <li>• Notice to government agencies</li> <li>• Notice to Indian Tribes, Pueblos and Nations</li> </ul>	<p>least 30 days prior to the hearing.</p>
<p>Response to Comments (if comments received): Upon the Secretary’s decision regarding issuance of a discharge permit – obligation at 20.6.2.3109.B NMAC. The Response to Comments shall specify which provisions, if any, in the draft permit were changed and the reasons for the change, and shall briefly describe and respond to all significant comments on the draft permit raised during the public comment period or at any hearing. The Secretary shall notify persons who participated in the permitting action by mail or email of the action taken and the reasons for such action and shall include a copy of the Response to Comments.</p>	<p>Response is issued 30 days after the administrative record is complete and all required information is available</p>

## Limited English Proficiency (LEP) Assessment

Facility: Waste Isolation Pilot Plant, DP-831

### Factor 1: The Number and Proportion of LEP Individuals Eligible to be Served or Likely to be Encountered in Community of Concern

See Public Involvement Plan (PIP), Table of EJSCREEN Results for the Affected Community.

#### Conclusions:

1. The number of LEP individuals (persons over the age of 5 who speak English “less than very well” in the affected community) is 17,975.
2. The percentage of LEP individuals in the affected community is 10%.
3. The percentage of linguistically isolated households is 5.5%, which is somewhat greater than the statewide average.
4. Spanish is the predominant non-English language spoken by LEP persons.
5. A review of the administrative record for this facility indicates considerable public interest/participation overall during the past 10 years. The portion of that public interest attributable to the LEP community is not determinable.

### Factor 2: Frequency with which LEP Individuals Might Come in Contact with the Program

Contact with the discharge permitting process primarily occurs when a permit application is under review. The GWQB provides notice to the public and encourages participation. Individuals may participate by requesting information, submitting comments on draft permits, requesting hearings, and taking part in hearings. Some permits generate considerable public interest, but participation is low for most permits. Historical participation in permitting activities for this facility is summarized under Factor 1.

#### Conclusion:

Although LEP participation has been limited, given the demographics of the area and the considerable overall public interest in this facility, the Bureau considers the potential for LEP contact with the permitting process to be “occasional”.

### Factor 3: Nature and Importance of the Activity or Service Provided by the Program

The permitting activity is deemed by the GWQB to be "important" to NMED, the impacted community, and the State of New Mexico. The permitting activity is important to NMED because the permit establishes site-specific requirements that must be met to ensure protection of public health and groundwater quality and provides a means to enforce those requirements. The permitting activity is important to the impacted community because poorly-operated waste treatment facilities have the potential to pose a public nuisance and adversely affect the quality of life of people living in the vicinity of the facility. The permitting activity is important to the State of New Mexico because establishment of effective permits ensures that discharges will not impact

the State's limited groundwater resources and that waste disposal is conducted in a consistent manner throughout the State.

Conclusion:

The GWQB considers the permitting activity “important” to NMED, to the state as a whole, and to the impacted community.

**Factor 4: Resources Available to NMED for LEP Services and Associated Costs**

For outreach to LEP communities associated with this permit action, NMED employs an in-house Spanish translator/interpreter. NMED contracts with a certified translator and utilizes a phone interpretation service to assist during direct communication between LEP individuals and NMED staff. The costs of newspaper publication of public notice in Spanish and of interpretive services for a public meeting or hearing are being incorporated into the Bureau’s budget, to the extent possible. Fees collected from the permittee in accordance with the schedule at 20.6.2.3114 NMAC are not sufficient to cover these costs.

Conclusion:

The Bureau can accommodate the costs of the LEP services identified in this plan. If additional services are requested, the budgetary implications will be reviewed.

**LEP Services Plan:**

The Bureau plans to:

1. Translate the Public Notice Two (PN-2) and any subsequent public notices into Spanish and publish in a paper serving the local community.
2. Translate the Fact Sheet into Spanish and provide it in the document repositories, online, and by request.
3. Provide interpretive services at any public meeting or public hearing, if requested.
4. Interact with members of the LEP community using certified interpreters, when needed.

The Bureau will consider requests from members of the affected community for additional LEP services.

Location: User-specified polygonal location  
 Ring (buffer): 0-miles radius  
 Description: WIPP SE NM

Summary of ACS Estimates		2013 - 2017
Population		186,214
Population Density (per sq. mile)		20
Minority Population		108,660
% Minority		58%
Households		64,503
Housing Units		74,547
Housing Units Built Before 1950		9,778
Per Capita Income		24,701
Land Area (sq. miles) (Source: SF1)		9,451.99
% Land Area		100%
Water Area (sq. miles) (Source: SF1)		26.17
% Water Area		0%

	2013 - 2017 ACS Estimates	Percent	MOE (±)
<b>Population by Race</b>			
Total	186,214	100%	0
Population Reporting One Race	182,391	98%	2,734
White	162,913	87%	1,026
Black	4,468	2%	286
American Indian	2,284	1%	264
Asian	736	0%	196
Pacific Islander	87	0%	41
Some Other Race	11,903	6%	921
Population Reporting Two or More Races	3,823	2%	427
Total Hispanic Population	99,771	54%	0
Total Non-Hispanic Population	86,443		
White Alone	77,554	42%	143
Black Alone	4,242	2%	265
American Indian Alone	1,652	1%	162
Non-Hispanic Asian Alone	661	0%	143
Pacific Islander Alone	78	0%	37
Other Race Alone	256	0%	137
Two or More Races Alone	1,999	1%	290
<b>Population by Sex</b>			
Male	94,379	51%	139
Female	91,835	49%	139
<b>Population by Age</b>			
Age 0-4	13,953	7%	112
Age 0-17	52,083	28%	575
Age 18+	134,131	72%	980
Age 65+	24,599	13%	532

**Data Note:** Detail may not sum to totals due to rounding. Hispanic population can be of any race.

N/A means not available. **Source:** U.S. Census Bureau, American Community Survey (ACS) 2013 - 2017

Location: User-specified polygonal location  
 Ring (buffer): 0-miles radius  
 Description: WIPP SE NM

	2013 - 2017 ACS Estimates	Percent	MOE (±)
<b>Population 25+ by Educational Attainment</b>			
Total	115,996	100%	191
Less than 9th Grade	11,606	10%	487
9th - 12th Grade, No Diploma	13,420	12%	496
High School Graduate	36,732	32%	797
Some College, No Degree	35,677	31%	770
Associate Degree	9,571	8%	436
Bachelor's Degree or more	18,561	16%	579
<b>Population Age 5+ Years by Ability to Speak English</b>			
Total	172,262	100%	98
Speak only English	114,514	66%	950
Non-English at Home <sup>1+2+3+4</sup>	57,748	34%	933
<sup>1</sup> Speak English "very well"	39,773	23%	894
<sup>2</sup> Speak English "well"	8,183	5%	493
<sup>3</sup> Speak English "not well"	7,293	4%	453
<sup>4</sup> Speak English "not at all"	2,499	1%	269
<sup>3+4</sup> Speak English "less than well"	9,792	6%	511
<sup>2+3+4</sup> Speak English "less than very well"	17,975	10%	709
<b>Linguistically Isolated Households*</b>			
Total	3,536	100%	280
Speak Spanish	3,423	97%	275
Speak Other Indo-European Languages	57	2%	40
Speak Asian-Pacific Island Languages	22	1%	28
Speak Other Languages	34	1%	37
<b>Households by Household Income</b>			
Household Income Base	64,503	100%	500
< \$15,000	8,254	13%	432
\$15,000 - \$25,000	7,356	11%	395
\$25,000 - \$50,000	15,009	23%	585
\$50,000 - \$75,000	12,145	19%	493
\$75,000 +	21,738	34%	647
<b>Occupied Housing Units by Tenure</b>			
Total	64,503	100%	500
Owner Occupied	44,425	69%	568
Renter Occupied	20,078	31%	553
<b>Employed Population Age 16+ Years</b>			
Total	139,952	100%	206
In Labor Force	84,397	60%	694
Civilian Unemployed in Labor Force	4,929	4%	320
Not In Labor Force	55,556	40%	739

**Data Note:** Detail may not sum to totals due to rounding. Hispanic population can be of anyrace.

N/A means not available. **Source:** U.S. Census Bureau, American Community Survey (ACS)

\*Households in which no one 14 and over speaks English "very well" or speaks English only.

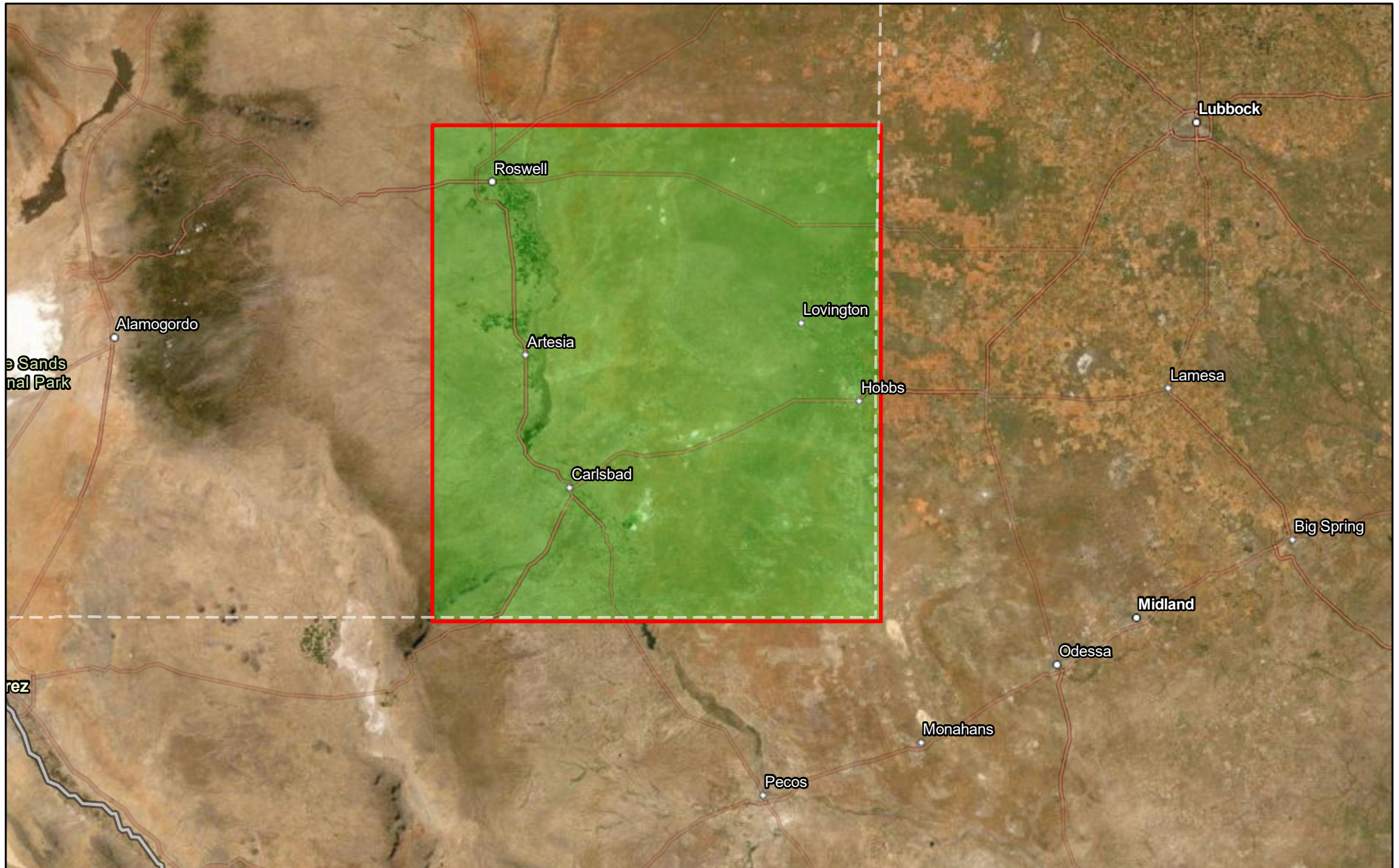
Location: User-specified polygonal location  
 Ring (buffer): 0-miles radius  
 Description: WIPP SE NM

	2013 - 2017 ACS Estimates	Percent	MOE (±)
<b>Population by Language Spoken at Home*</b>			
Total (persons age 5 and above)	172,262	100%	98
English	114,514	66%	1,124
Spanish	55,852	32%	1,092
French	213	0%	58
French Creole	N/A	N/A	N/A
Italian	N/A	N/A	N/A
Portuguese	N/A	N/A	N/A
German	301	0%	78
Yiddish	N/A	N/A	N/A
Other West Germanic	N/A	N/A	N/A
Scandinavian	N/A	N/A	N/A
Greek	N/A	N/A	N/A
Russian	N/A	N/A	N/A
Polish	N/A	N/A	N/A
Serbo-Croatian	N/A	N/A	N/A
Other Slavic	N/A	N/A	N/A
Armenian	N/A	N/A	N/A
Persian	N/A	N/A	N/A
Gujarathi	N/A	N/A	N/A
Hindi	N/A	N/A	N/A
Urdu	N/A	N/A	N/A
Other Indic	N/A	N/A	N/A
Other Indo-European	118	0%	64
Chinese	101	0%	89
Japanese	N/A	N/A	N/A
Korean	82	0%	102
Mon-Khmer, Cambodian	N/A	N/A	N/A
Hmong	N/A	N/A	N/A
Thai	N/A	N/A	N/A
Laotian	N/A	N/A	N/A
Vietnamese	83	0%	106
Other Asian	282	0%	232
Tagalog	124	0%	118
Other Pacific Island	N/A	N/A	N/A
Navajo	N/A	N/A	N/A
Other Native American	N/A	N/A	N/A
Hungarian	N/A	N/A	N/A
Arabic	53	0%	54
Hebrew	N/A	N/A	N/A
African	N/A	N/A	N/A
Other and non-specified	418	0%	82
Total Non-English	57,748	34%	1,128

**Data Note:** Detail may not sum to totals due to rounding. Hispanic population can be of any race.  
 N/A means not available. **Source:** U.S. Census Bureau, American Community Survey (ACS) 2013 - 2017.  
 \*Population by Language Spoken at Home is available at the census tract summary level and up.

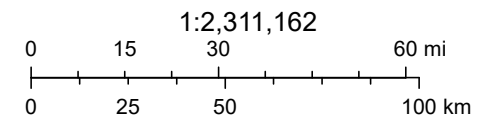


# Waste Isolation Pilot Plant DP-831



July 15, 2020

 Waste Isolation Pilot Plant DP-831



Source: Esri, Maxar, GeoEye, Earthstar Geographics, CNES/Airbus DS, USDA, USGS, AeroGRID, IGN, and the GIS User Community, Sources: Esri,