



Quick Reference Guide

Example (pg 1)

Contingency Plan - Quick Reference Guide

ABC FACILITY

1000 SW Main Street

Anytown, NM 87000

8) Facility Contacts:

Primary Emergency Coordinator: George Washington

Mobile Number: 505-555-0000

Secondary Emergency Coordinator: Abraham Lincoln

Mobile Number: 505-555-0001

Tertiary Emergency Coordinator: Martha Washington

Mobile Number: 505-555-0002

Note: ABC Facility operates 24/7, but the order of contact during an emergency is above.



Quick Reference Guide

Example (pg 1) (continued)

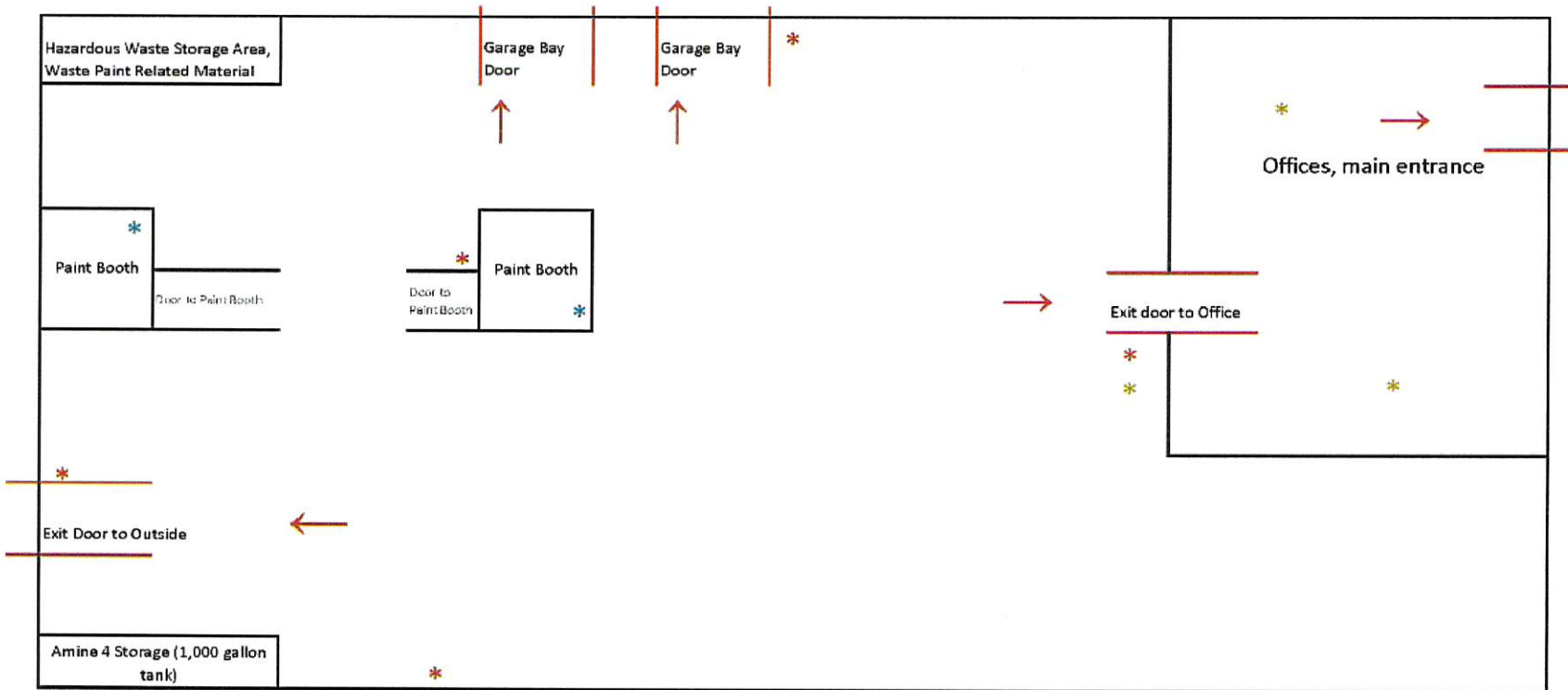
1) Waste	1) Waste Codes/Hazards	Location Accumulated	2) Maximum Amounts Present	3) Response Notes	3) Special Notes to Hospital personnel
Paint Related Wastes (liquid)	D001 (ignitability, flash point <140 °F); F003, F005 (Benzene, Methyl Ethyl Ketone, Toluene, Toxicity)	NW corner of Warehouse, hazardous waste storage area	Five, 55-gallon drums (2,065 pounds)	If personnel come into contact with material, decontamination at the hospital may be required prior to treatment.	None
Paint Related Wastes (liquid)	D001 (ignitability, flash point <140 °F); F003, F005 (Benzene, Methyl Ethyl Ketone, Toluene, Toxicity)	Two Satellite Accumulation Areas as noted with asterisks on the attached map.	One, 55-gallon drum (440 pounds)	If personnel come into contact with material, decontamination at the hospital may be required prior to treatment.	None
Off-spec 2, 4-D , a herbicide, (brand name is Amine 4) (liquid)	D016 (toxicity); Flashpoint 190 °F.	SW corner of warehouse near new product storage of Amine.	Off-Spec – 1 tank, 1,000 gallons New product – 1 tank, 1,000 gallons	Use PPE to prevent contact with skin and eyes. Prevent spills from entering drains and waterways. Prevent sources of ignition and open flames.	Contact Chemtrac for emergency treatment information at 800-424-9300. If in eyes, wash eyes for several minutes.



Quick Reference Guide

Example (pg 2)

4)
5)
7)



- * Satellite Accumulation Area for Paint Related Waste Material (D001, F003, F005)
- * Fire Alarms (ring on-site only, there are no fire alarms that notify off-site personnel)
- * Telephone for off-site notification of emergency

→ Indicates evacuation route out of the building.

Note 1: Hazardous waste (paint related waste) is generated and accumulated inside each of the two paint booths, and is accumulated in the hazardous waste storage area. Amine 4 can be a hazardous waste if it is off-specification and it is generated and accumulated in the SW corner at the Amine 4 tank.

Note 2: Smoke detectors are located throughout the office and main warehouse on the ceiling, in a grid about every 25 feet. Smoke detectors are connected to an automatic sprinkler system.



Quick Reference Guide

Example (pg 3)

Street Map

5)
6)

