

Figure B1-1
 Headspace Gas Drum Age Criteria Sampling Scenario Selection Process

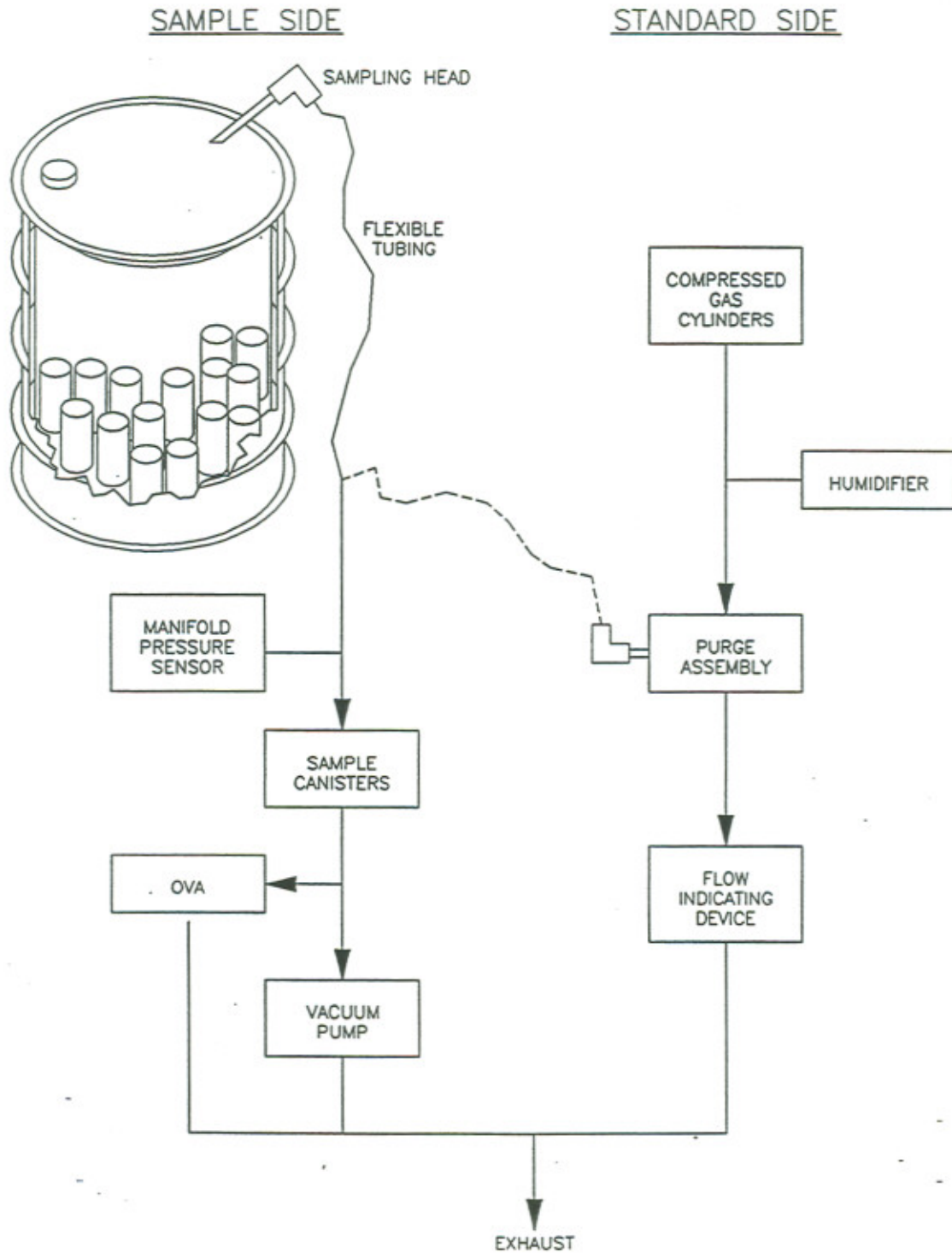


Figure B1-2
Headspace Sampling Manifold

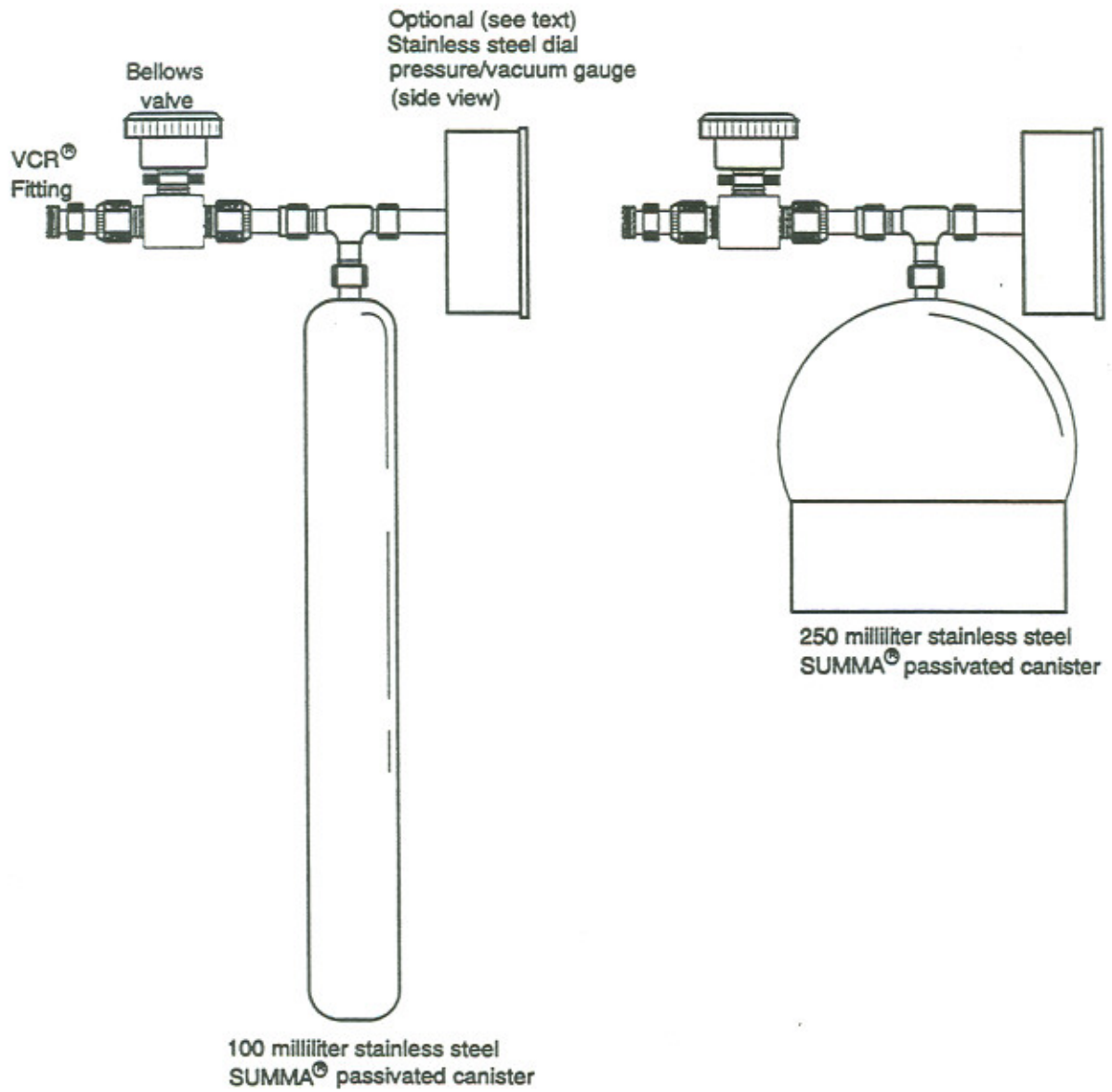


Figure B1-3
SUMMA[®] Canister Components Configuration (Not to Scale)

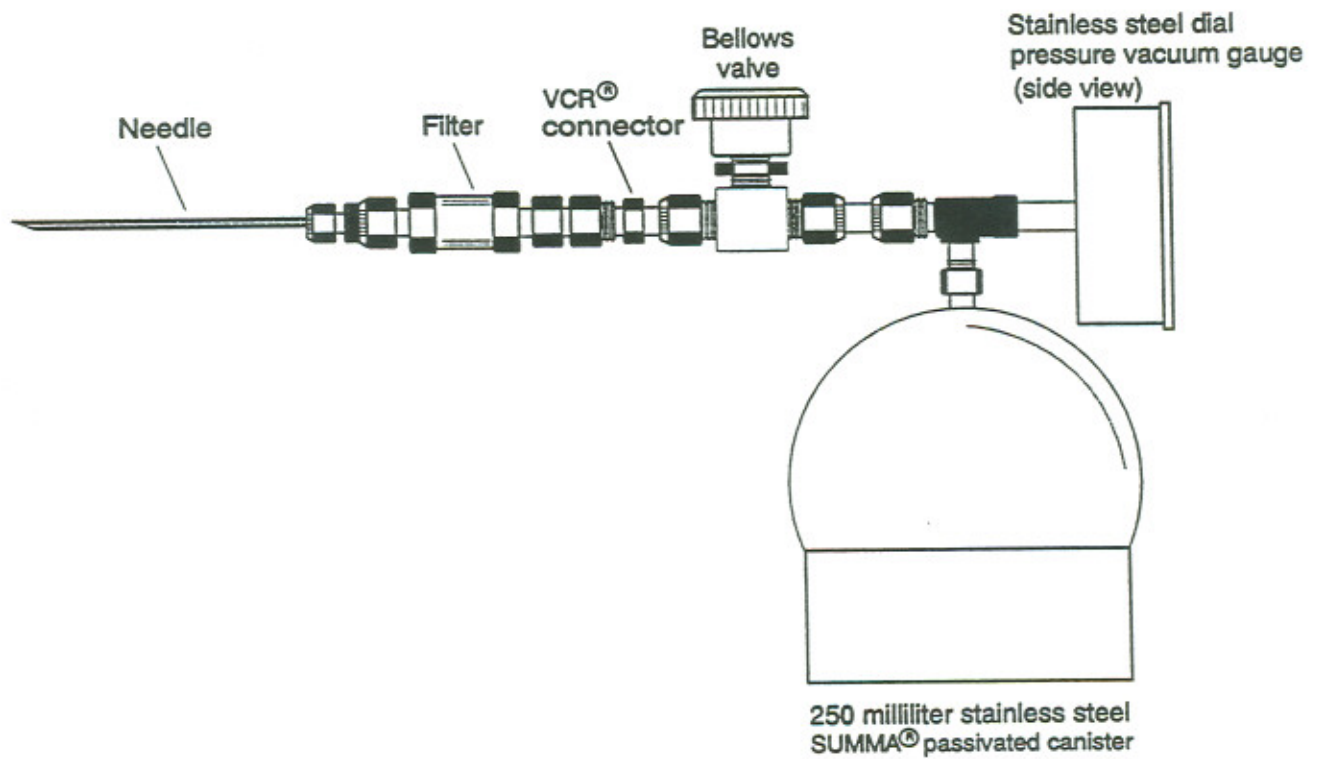
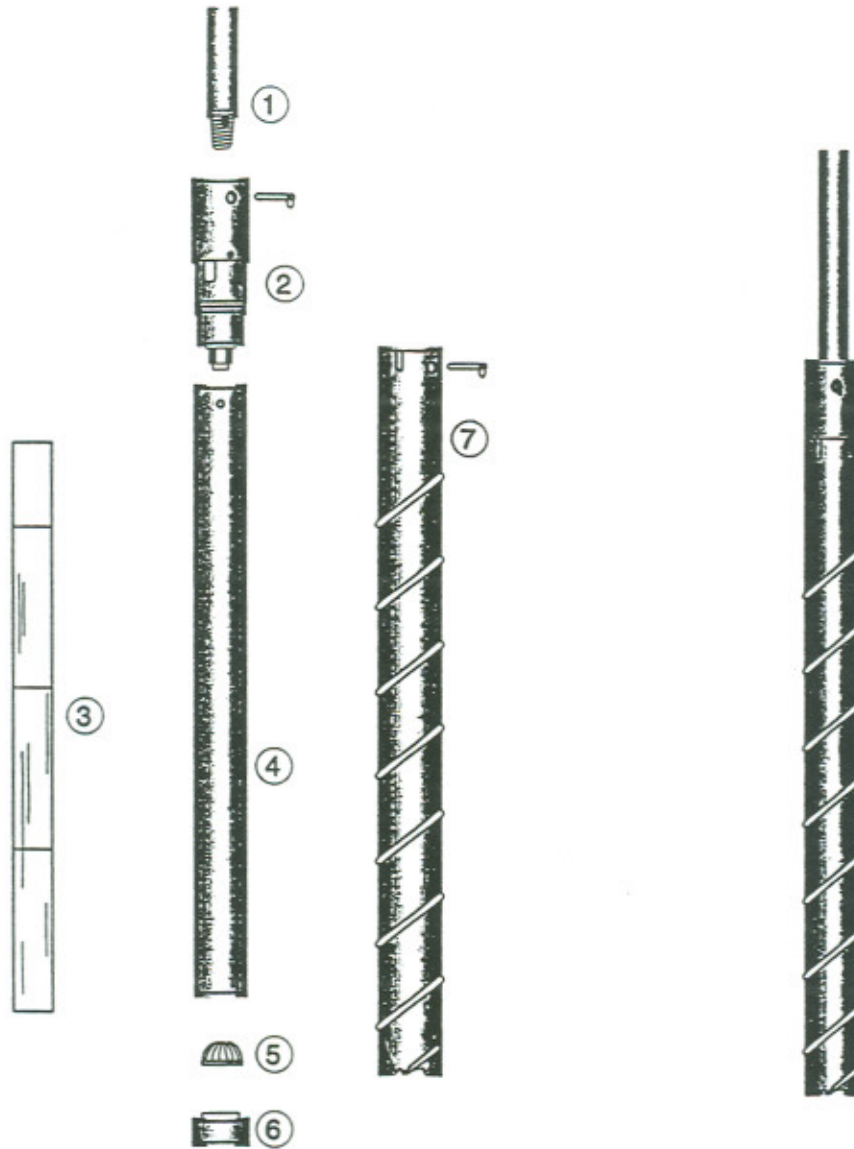


Figure B1-4
Schematic Diagram of Direct Canister with the Poly Bag Sampling Head



- ① Drill Rod
- ② Thrust Bearing Ball Check Valve
- ③ Clear Teflon[®] Liners
- ④ Core Barrel
- ⑤ Spring Retainer (optional)
- ⑥ Core barrel tip
- ⑦ Auger and Pin

Figure B1-5
Rotational Coring Tool (Light Weight Auger)

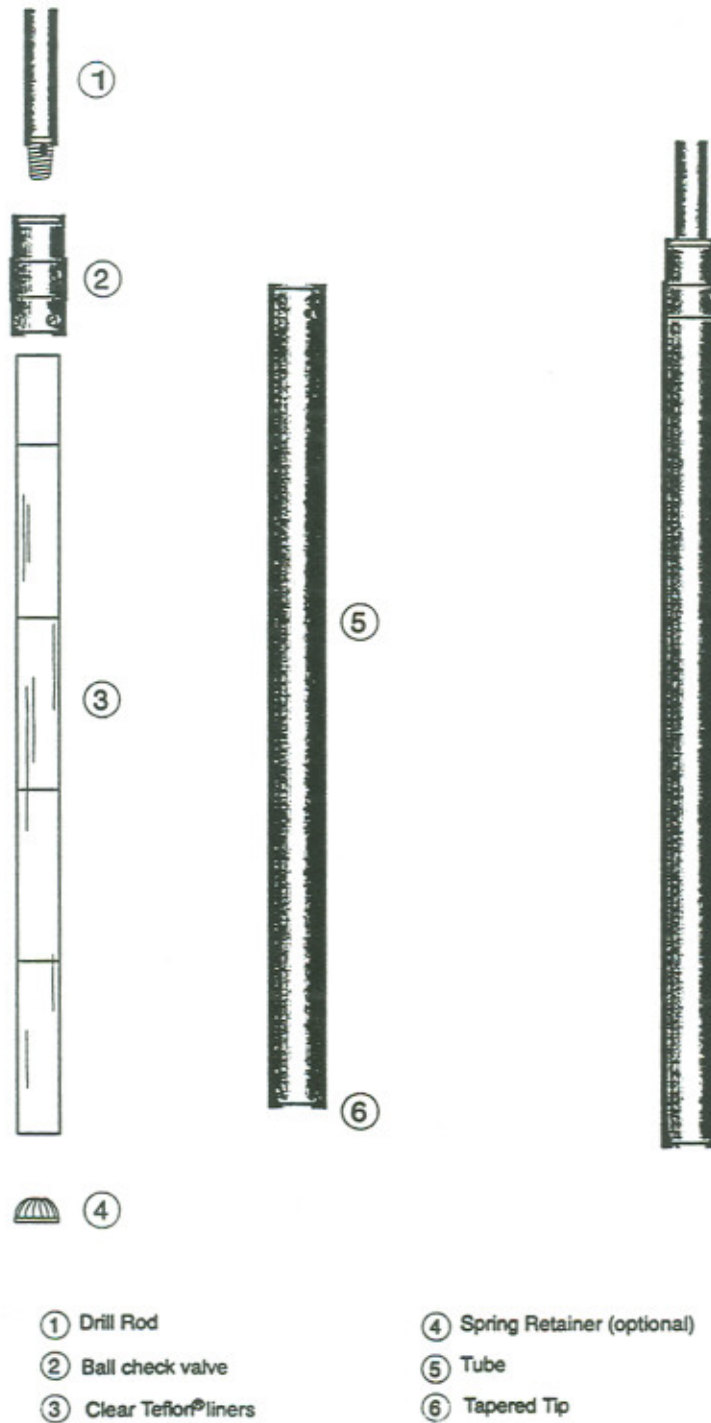


Figure B1-6
Non-Rotational Coring Tool (Thin Walled Sampler)

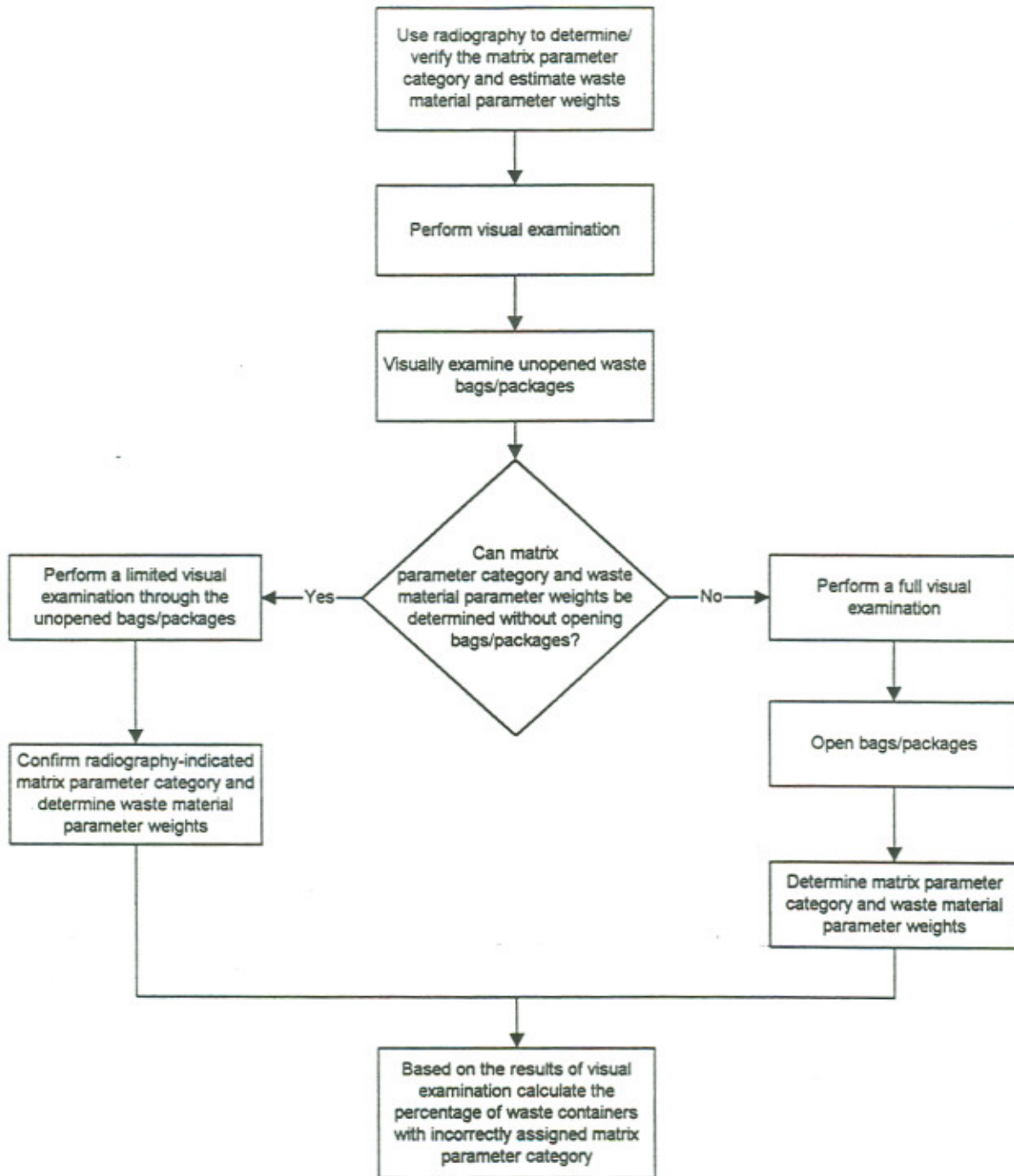


Figure B1-7
Overall Programmatic Approach to Visual Examination