

Figure O2-1
General Location of the WIPP Facility

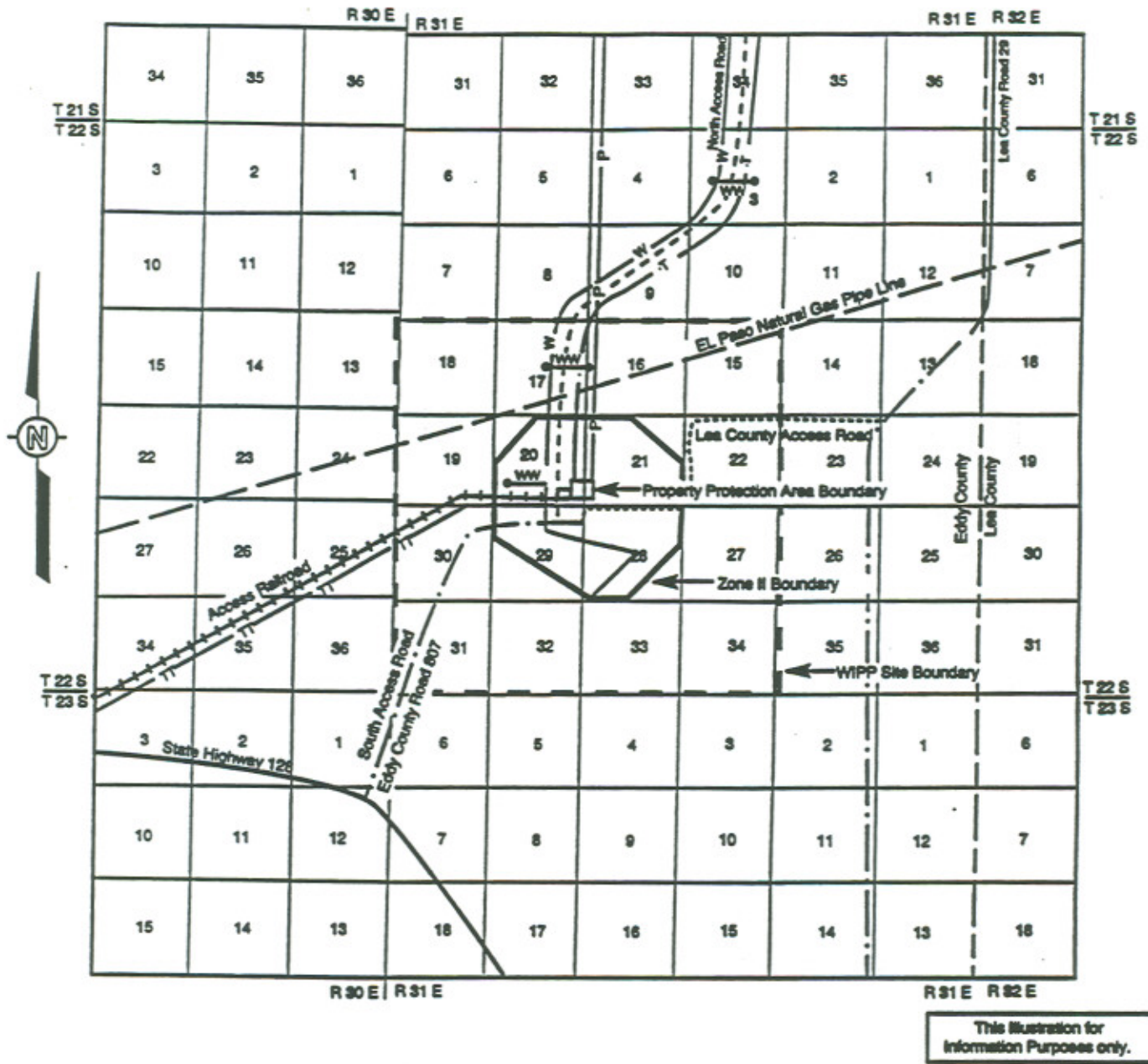


Figure O2-2
 Planimetric Map-WIPP Facility Boundaries

LEGEND

- . . . WIPP Site Boundary 10,240 Acres.
- w — U.S. DOE Right of Way Number NM-53809. For Waterline, 50 Feet Wide.
The DOE had Agreed with the City of Carlsbad to Allow the Individuals to Tap this Line Located within the North Access Road Right of Way.
- WAW — Stock Water Tanks and Tap Lines Connected to the Main WIPP Waterline.
- P — Southwestern Public Service Company Right of Way Number NM-43203 for Power 60 Feet Wide.
- T — General Telephone of the Southwest Right of Way for Telephone Line, 30 Feet Wide, Located within the North access Road Right of Way.
- TT — General Telephone of the Southwest Right of Way Number NM-60174 for Telephone Line, 30 Feet Wide, Located within the Railroad Right of Way.
- U.S. DOE Right of Way Number NM-55675 for North Access Road, 170 Feet Wide.
- — El Paso Natural Gas company Right of Way for Gas Pipeline, 30 Feet Wide in Section 16, 50 Feet Wide Elsewhere.
- + + + U.S. DOE Right of Way Number NM-55699 for Access Railroad, 150 Feet Wide.
- . — Eddy County Right of Way for Access Roads Includes Right of Way Number NM-4130 for the South Access Road Which is 150 Feet Wide.

NOTES

1. The Property Protection Area is a fenced area of approximately 35 acres. It contains all surface facilities with the exception of salt storage piles, parking lot, landfill and waste water stabilization lagoons.
2. Zone II overlies the maximum extent of the Area available for underground development.
3. WIPP site boundary (WSB) provides a one mile buffer area around the area available for underground development.

Figure O2-2a
Legend to Figure O2-2

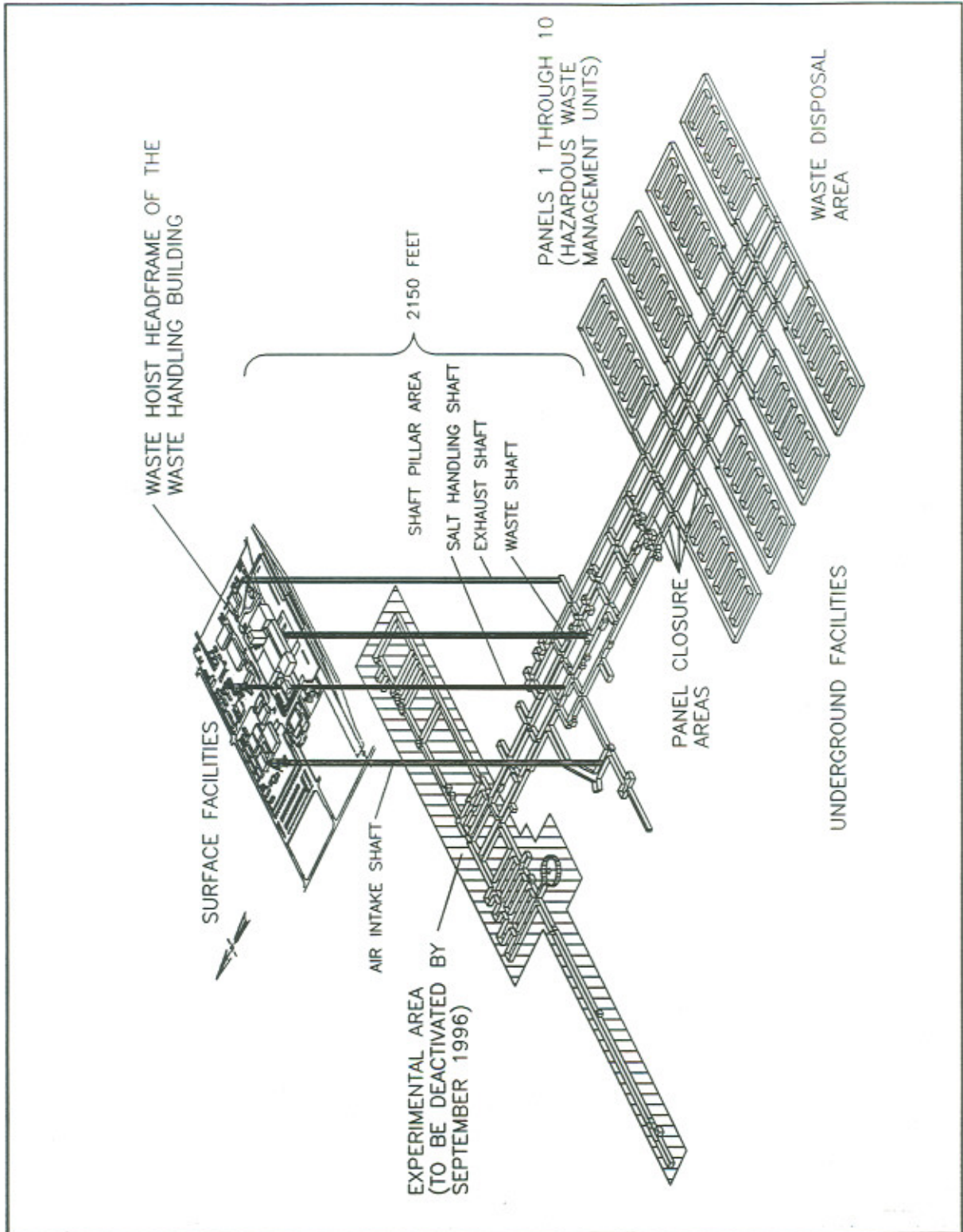


Figure O3-1
Spatial View of the WIPP Facility

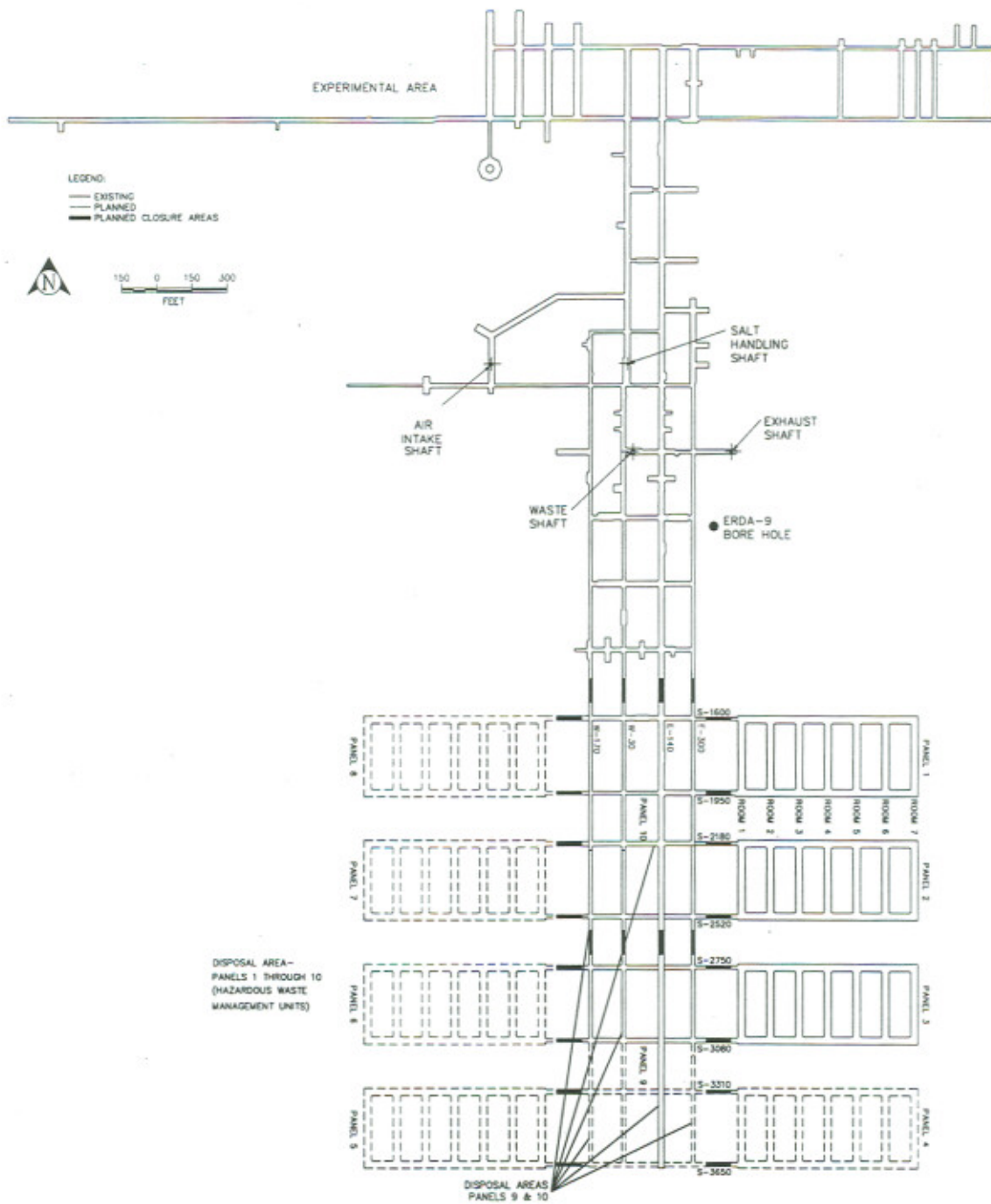


Figure O3-2
 Repository Horizon

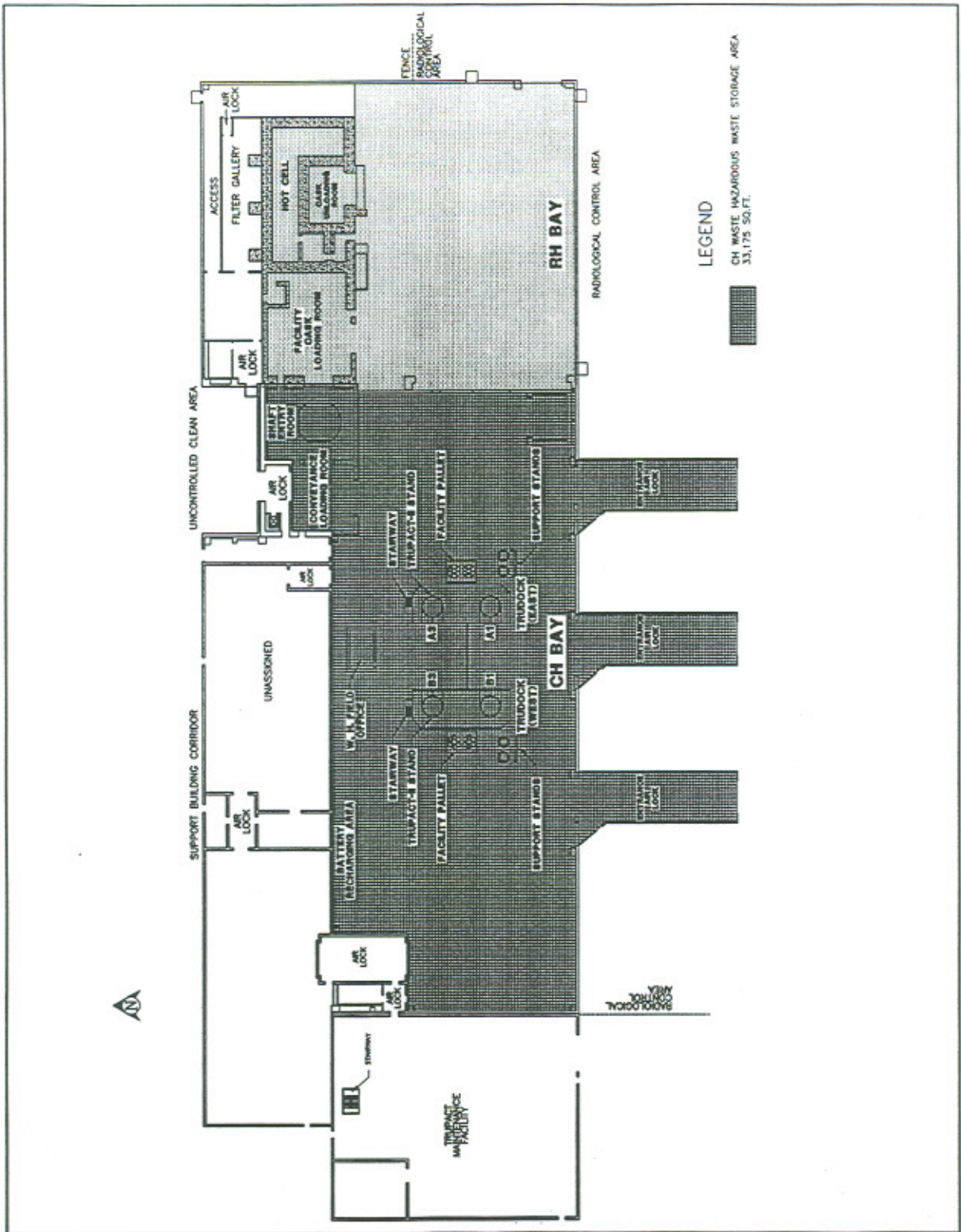


Figure O3-3
 Waste Handling Building-Container Storage Unit

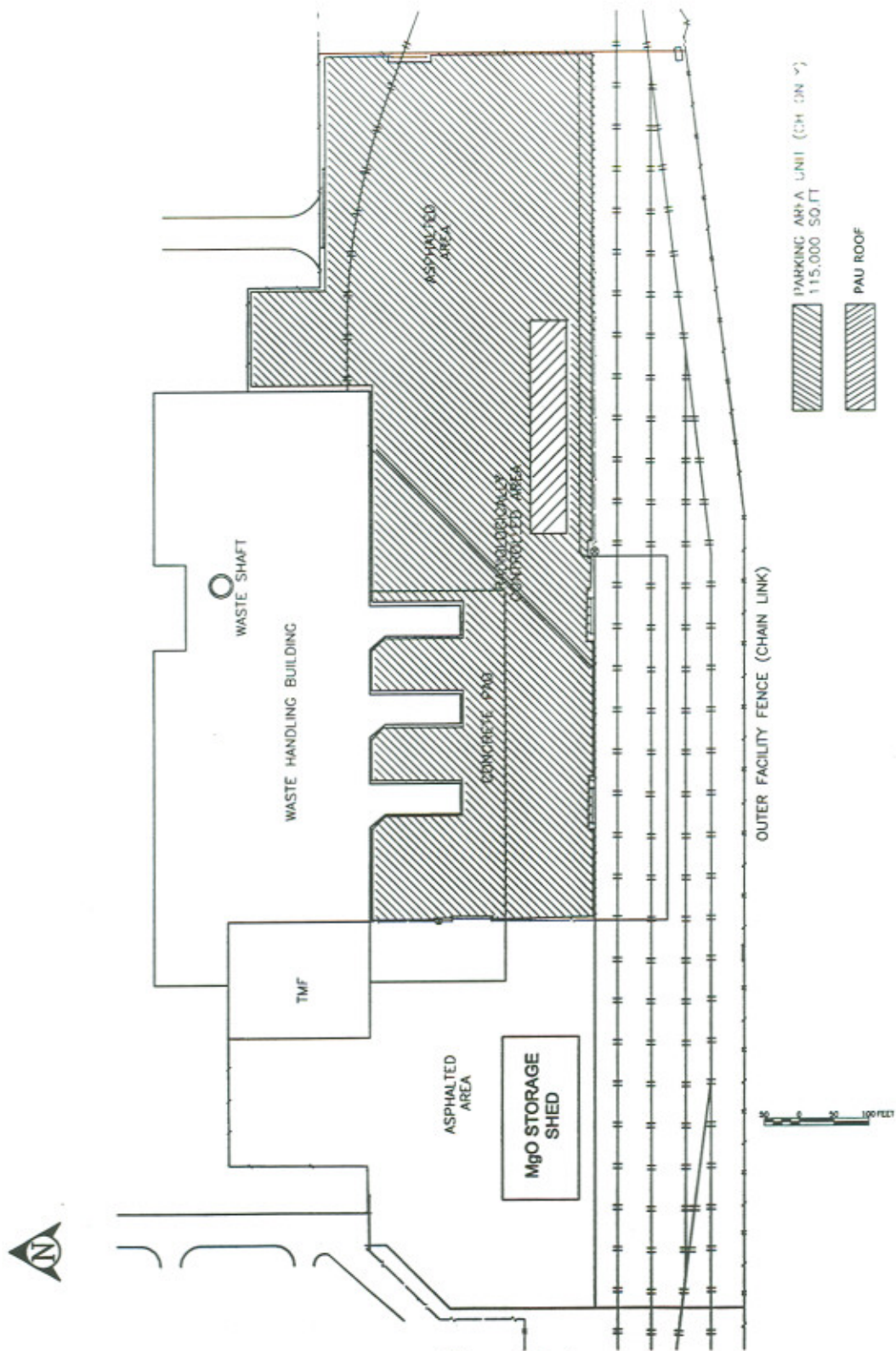


Figure O3-4
Parking Area-Container Storage Unit

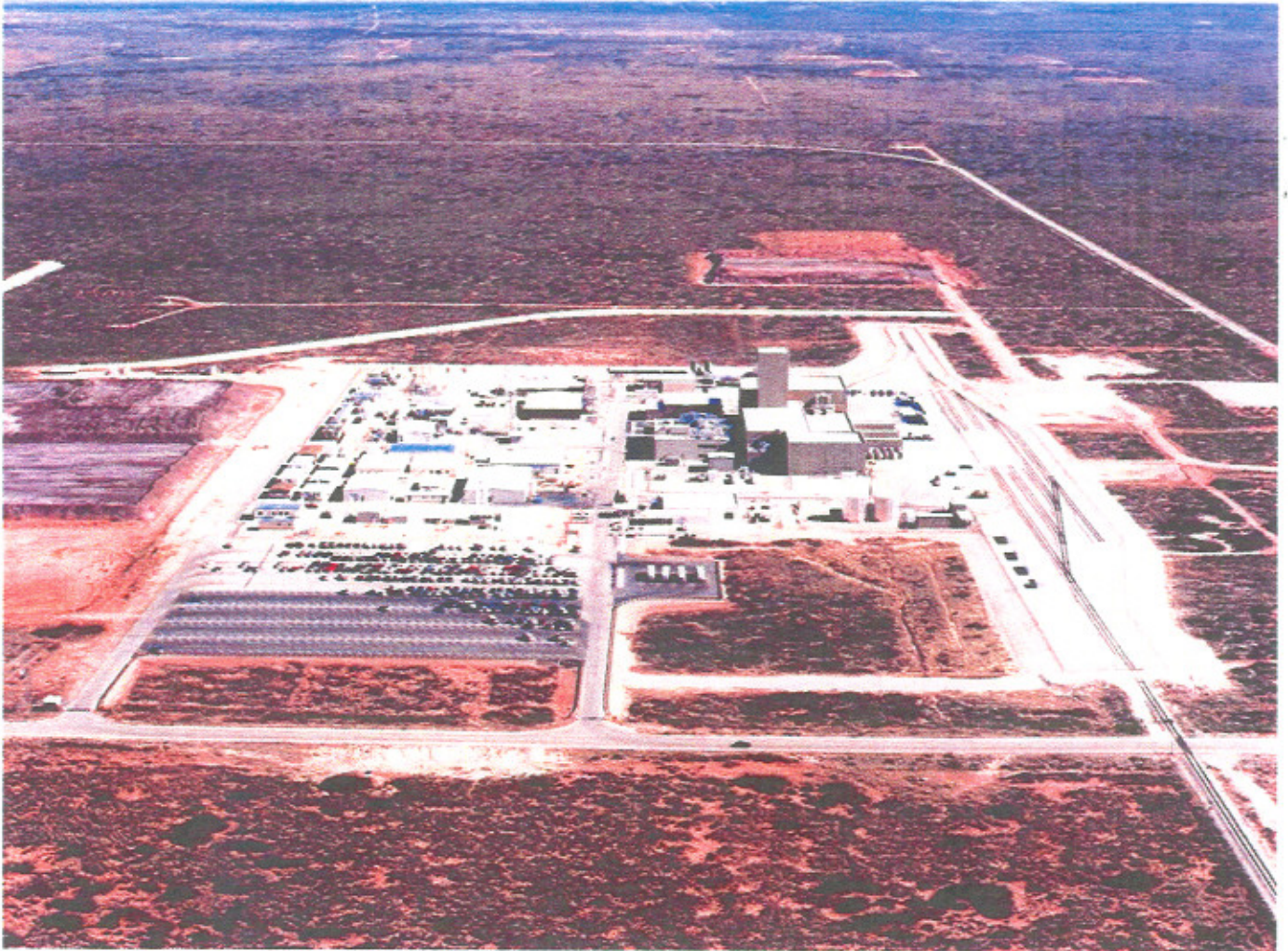


Figure O4-1
Aerial Photograph of the Waste Isolation Pilot Plant



Figure O4-2
Underground - Panel One - Waste Storage Disposal Room



Figure O4-3
Aerial Photograph of the Waste Handling Building



Figure O4-4
TRUDOCKs in CH Bay of the Waste Handling Building



Figure O4-5
NE Corner of CH Bay of the Waste Handling Building



Figure O4-6
Westward View of CH Bay of the Waste Handling Building



Figure O4-7
Waste Hoist Conveyance - Loading Facility Pallet with CH Waste, Waste Handling Building

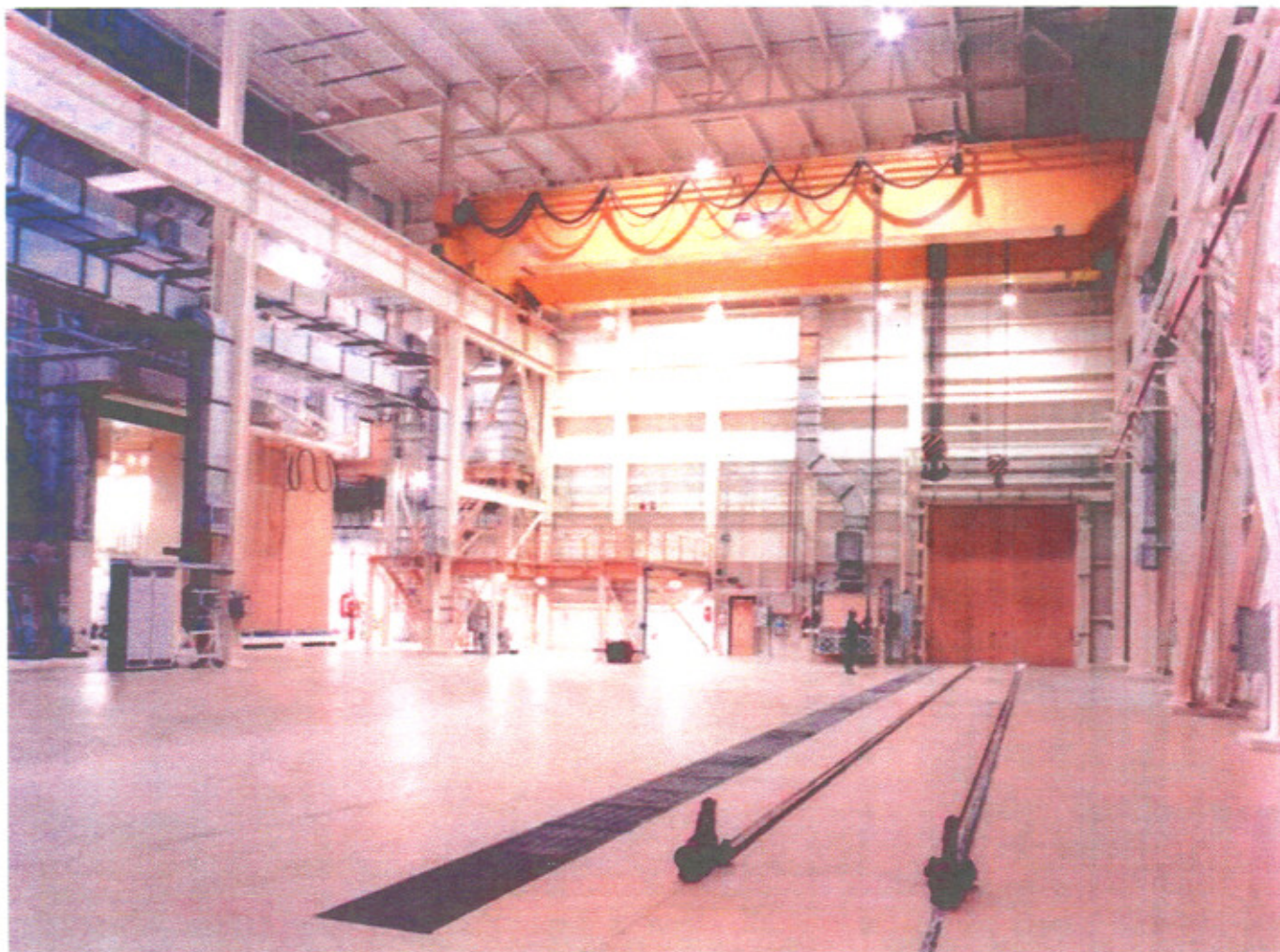


Figure O4-8
RH Bay (Photo Taken July 2000)

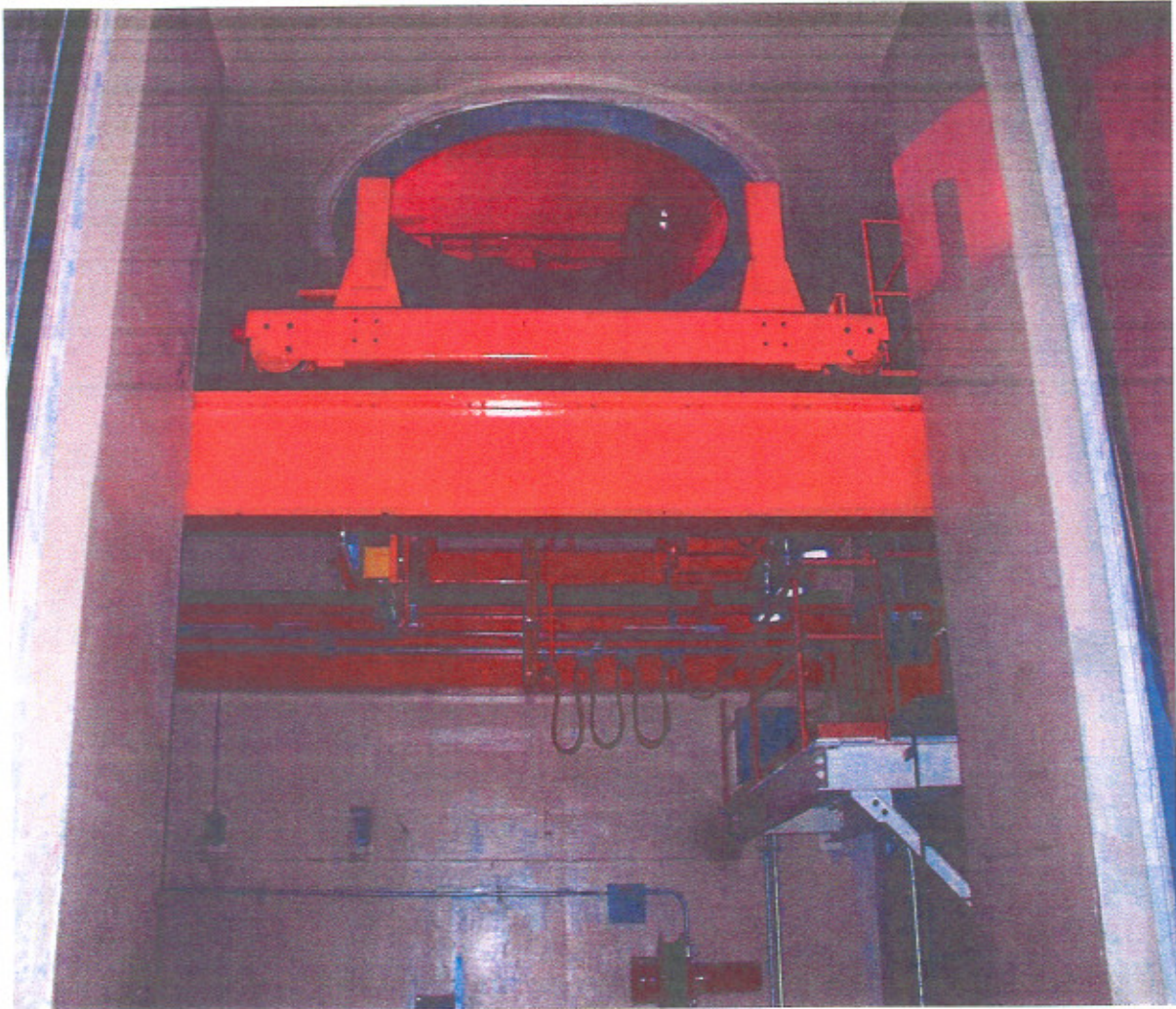


Figure O4-9
Cask Unloading Room and Bridge Crane

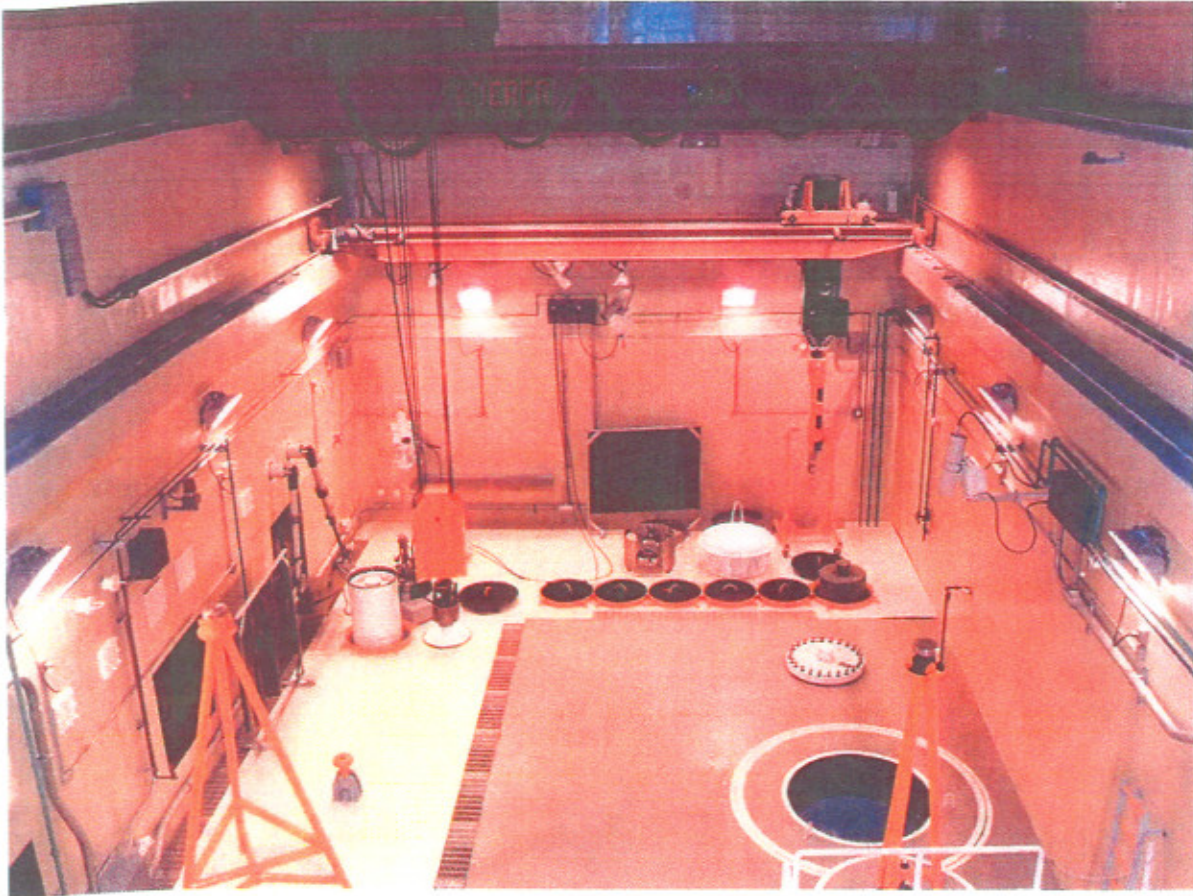


Figure O4-10
Hot Cell



Figure O4-11
Transfer Cell

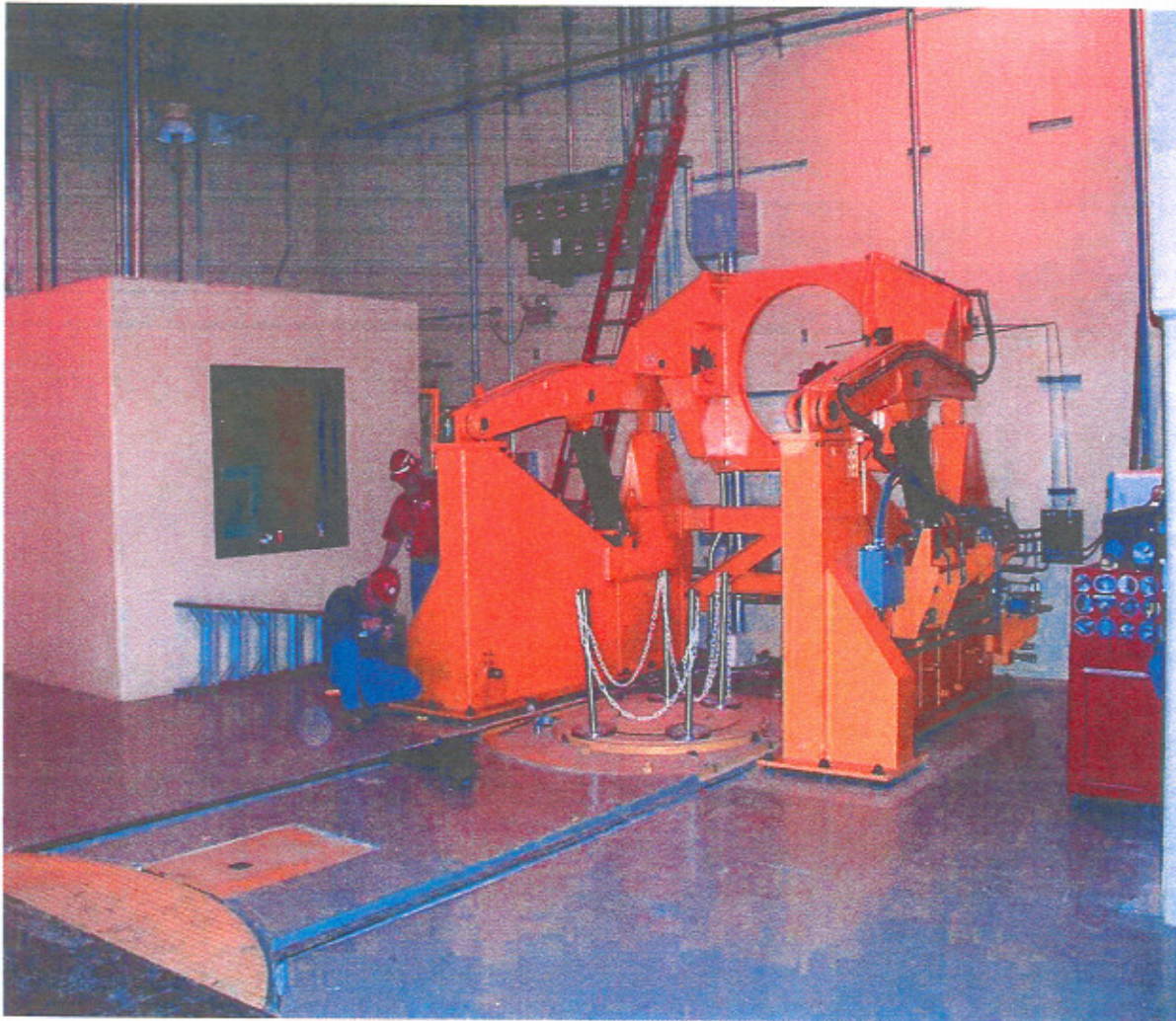


Figure O4-12
Facility Cask Loading Room and Facility Cask Rotating Device