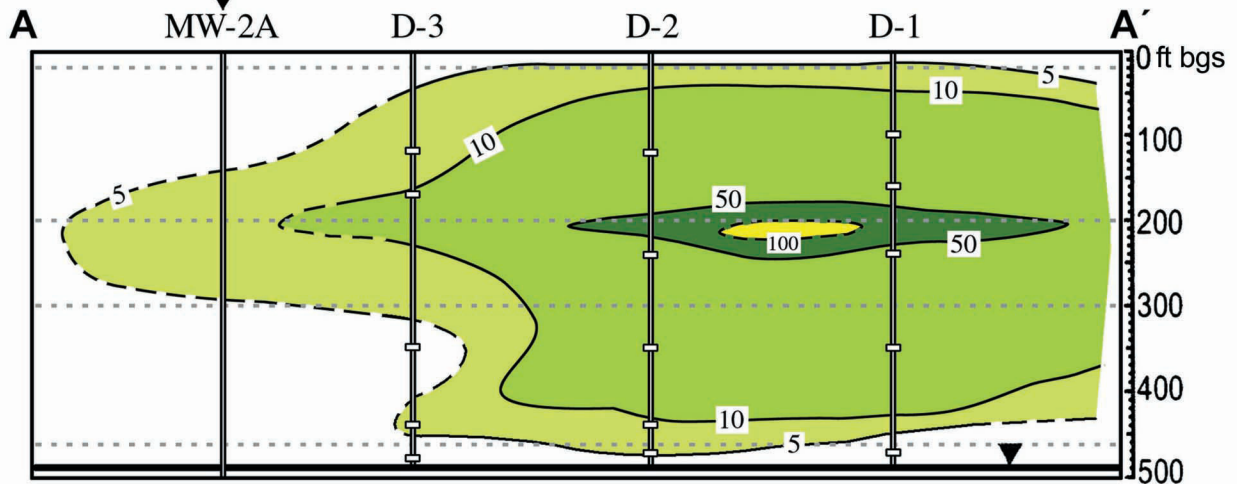


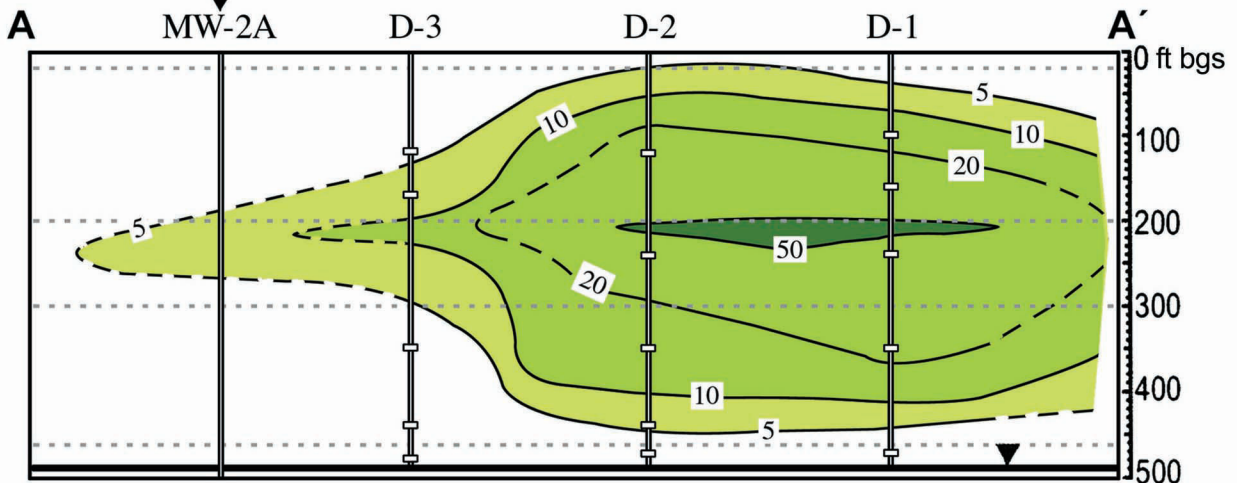
Post-VE VCM Total VOC Concentration - September 2004

(Plugged & Abandoned)



Post-VE VCM TCE Concentration - September 2004

(Plugged & Abandoned)



LEGEND:

- Soil Gas Monitoring Port Location
- Screen Interval
- Water Table
- BGS = Below Ground Surface
- VE = Vapor Extraction
- VOC = Volatile Organic Compounds
- VCM = Voluntary Corrective Measure
- = Concentration Parts per Million Volume Basis

NOT TO SCALE These illustrations are approximate in nature

840857.01100000 A10

Figure 4
Post-VE VCM Volatile Organic Compound Soil-Gas Plume - September 2004
Chemical Waste Landfill