



PPE in General Industry

- **29 CFR 1910.132**
 - **29 CFR 1910.133**
 - **29 CFR 1910.135**
 - **29 CFR 1910.136**
 - **29 CFR 1910.138**
-

Objectives

- Review general requirements
 - Review PPE essentials
 - Review new payment requirements
 - Discuss how to conduct a hazard assessment
 - Discuss basic hazard categories
-

What is PPE?

- Equipment that creates a barrier against workplace hazards
- Examples include hard hats, goggles, gloves, and hearing protection
- A temporary measure



Personal Protective Equipment

1910.132(a)

- General requirements
 - Application
 - » Protective equipment, including personal protective equipment, shall be provided, used, and maintained in a sanitary and reliable condition.



Employee-Owned Equipment

1910.132(b)

- Where employees provide their own protective equipment, the employer shall be responsible to assure its adequacy, including proper maintenance, and sanitation.



PPE Design

1910.132(c)

- All personal protective equipment shall be of safe design and construction for the work to be performed.



PPE Essentials

- Hazard assessment and equipment selection
- Training and documentation
- Payment for PPE



Hazard Assessment

1910.132(d)

- A requirement
 - Employer must select PPE based on the assessment and require employees to use them
 - Communicate selection decisions to employees
- Involve managers and workers



Hazard Assessment Process

- Must be job and area based
- Requires written certification identifying the document as such including:
 - Person certifying that the evaluation was performed
 - Date of evaluation



Hazard Assessment Process

- Walk around
- Hazard control
- PPE selection



Basic Hazard Categories

- Impact
- Penetration
- Compression
- Chemical
- Heat/cold/wet
- Harmful dust
- Light radiation





Training

1910.132(f)

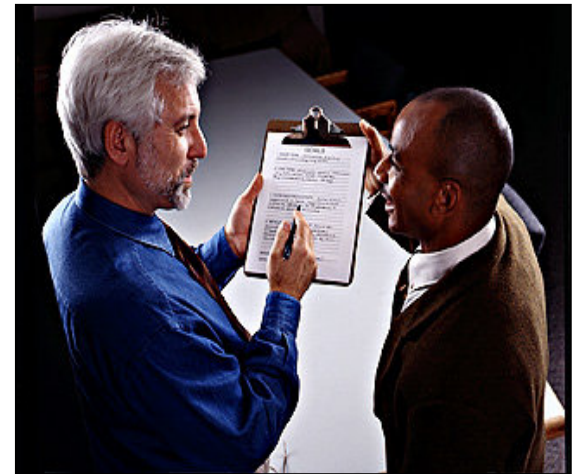
- Training subjects:
 - What PPE is required
 - When PPE is required
 - How to don, doff, adjust and wear PPE
 - The limitations of use
 - How to maintain and clean PPE
 - When to replace PPE
 - Employee must demonstrate knowledge
 - Retraining
-



Training Records

- Written certification required including:
 - Name of employee
 - Date of training
 - Subject of the certification

- Additional training materials



PPE Payment

1910.132(h)

- The employer must pay for all PPE used in the workplace, **except**:
 - Non-specialty safety-toe footwear and non-specialty prescription safety eyewear provided the employer allows it to be worn off the jobsite
 - Built-in metatarsals (as long as the employer provides another type of metatarsal protection when required)
 - Logging boots
 - Everyday work clothing and ordinary clothing, skin creams, etc., used solely for protection from weather
-

PPE Payment

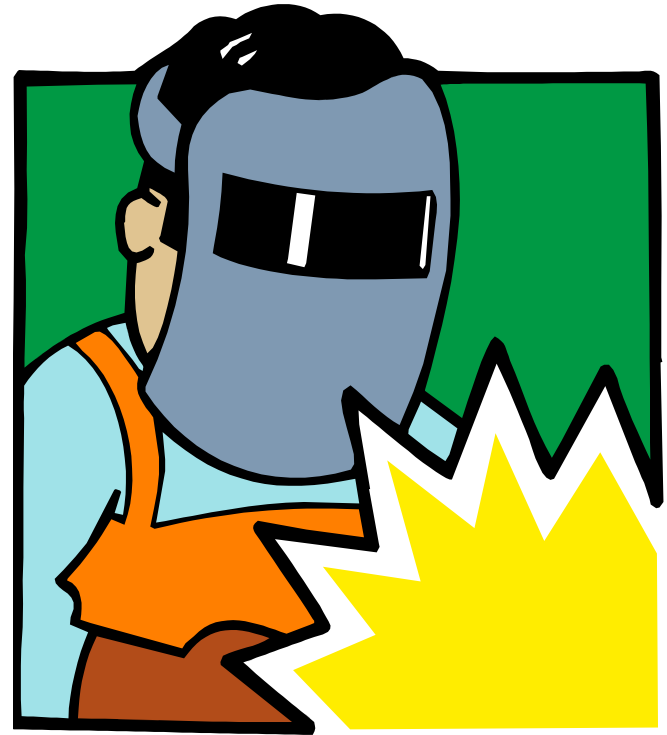
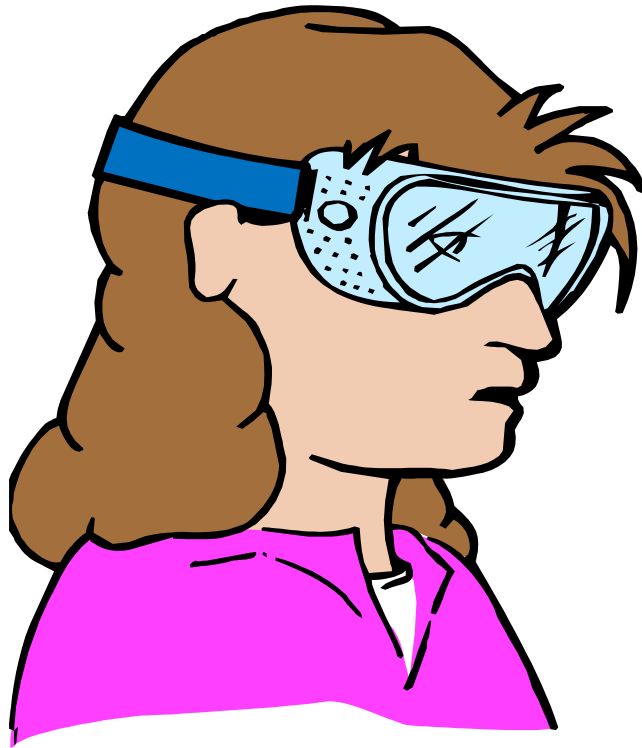
1910.132(h)

- The employer must pay for replacement PPE unless it is lost or intentionally damaged.
- If the employer provides adequate and appropriate PPE, but the employee prefers a different type, the employer does not have to pay for it.

Note: New requirements for PPE payment became effective May 13, 2008.

Eye and Face Protection

1910.133



Eye and Face Protection

1910.133(a)(1)

- General requirements
 - The employer shall ensure that each affected employee uses appropriate eye or face protection when exposed to eye or face hazards.



Eye and Face Protection

1910.133(a)(2)

- The employer shall ensure that each affected employee uses eye protection that provides side protection when there is a hazard of flying objects.



Eye and Face Protection

1910.133(a)(3)

- The employer shall ensure that each affected employee who wears prescription lenses while engaged in operations that involve eye hazards wears eye protection that incorporates the prescription in its design, or wears eye protection that can be worn over the prescription lenses.



Eye and Face Protection

- Criteria for eye and face protection
 - ANSI Z87.1-2003
 - ANSI Z87.1-1989 (R1998)
 - Protective eye and face protection that the employer demonstrates is as least as effective as the above consensus standards





Head Protection

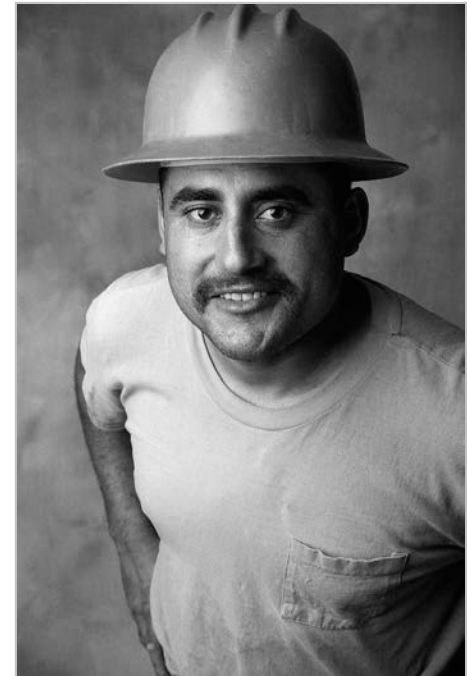
1910.135



Head Protection

1910.135(a)(1)

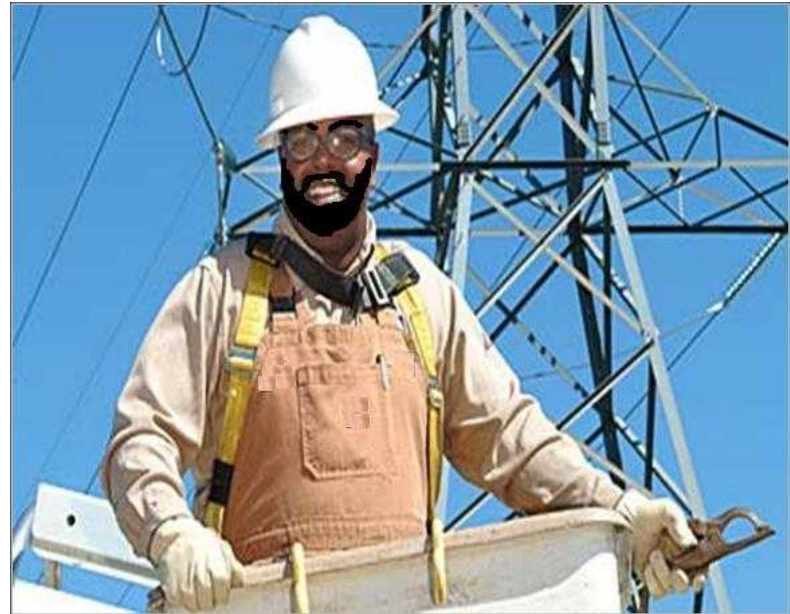
- General requirements
 - The employer shall ensure that each affected employee wears a protective helmet when working in areas where there is a potential for injuries to the head from falling objects.



Head Protection

1910.135(a)(2)

- The employer shall ensure that a protective helmet designed to reduce electrical shock hazard is worn by each such affected employee when near exposed electrical conductors which could contact the head.



Head Protection

1910.135(b)(1)-(2)

- Criteria for head protection
 - ANSI Z89.1-2003
 - ANSI Z89.1-1997
 - ANSI Z89.1-1986
 - Head protection that the employer demonstrates is as least as effective as the above consensus standards



Foot Protection

1910.136(a)

- General requirements
 - The employer shall ensure that each affected employee uses protective footwear when working in areas where there is a danger of foot injuries.



Foot Protection

1910.136(b)(1)-(2)

- Criteria for protective footwear
 - ASTM F2412-2005 & ASTM F2413-2005
 - ANSI Z41-1999
 - ANSI Z41-1991
 - Protective footwear that the employer demonstrates is as least as effective as the above consensus standards



Hand Protection

1910.138(a)

- General requirements
 - Employers shall select and require employees to use appropriate hand protection when employees' hands are exposed to hazards.
 - » Skin absorption
 - » Cuts and lacerations
 - » Abrasions
 - » Burns
 - » Temperature extremes



Hand Protection

1910.138(b)

- Selection
 - Employers shall base the selection of the appropriate hand protection on an evaluation of the performance characteristics of the hand protection relative to the task(s) to be performed, conditions present, duration of use, and hazards identified.



Summary

We have covered the following topics:

- General requirements
- PPE essentials
- Hazard assessment
- Basic hazard categories



Thank You For Attending!

Final Questions?
