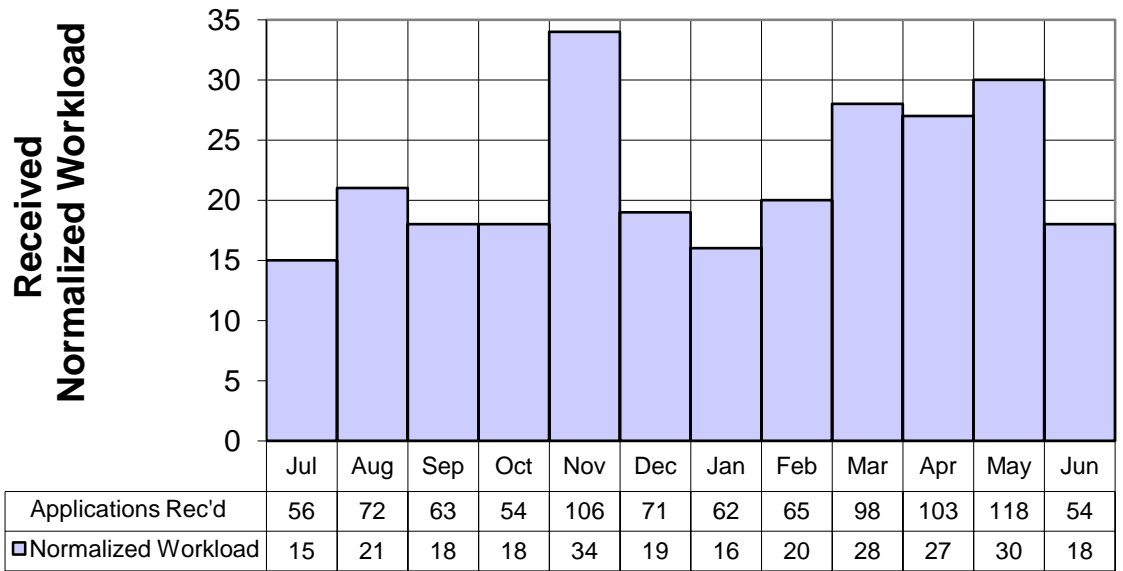
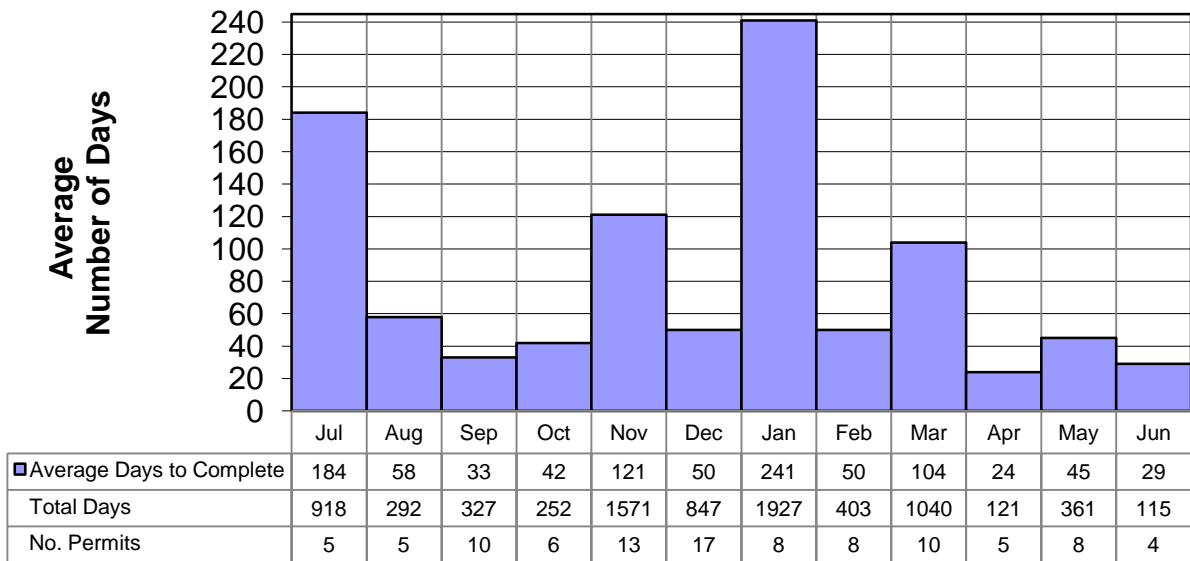


FY 2011 Air Quality NSR Normalized Workload

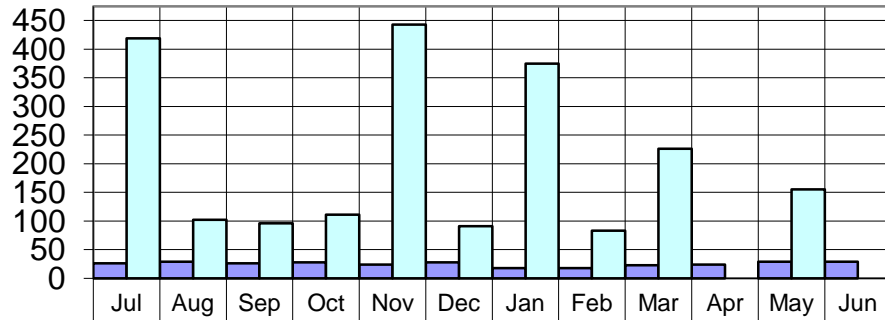


FY 2011 Air Quality NSR Average Number of Days to Rule Complete



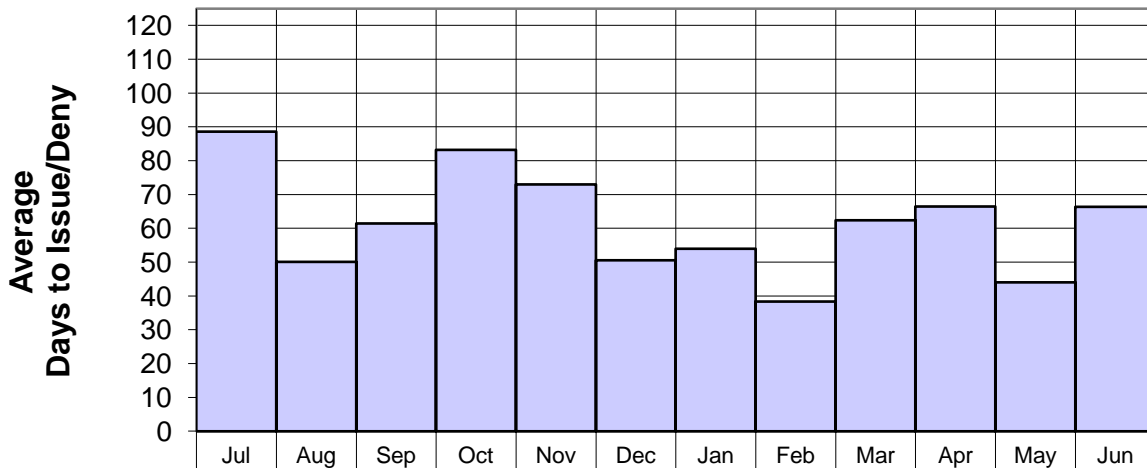
**FY 2011 Air Quality
Average Number of Days to Rule Complete by Category
(Complete First-Time Vs. Previously Ruled Incomplete)**

**Average
Days To Rule Complete**



■ Avg. Days-Complete First Time	26	29	26	28	24	28	18	18	23	24	29	29
□ Avg. Days-Previously Ruled Incomplete	419	102	96	111	443	91	375	83	226	0	155	0
First Time-Total Days	79	88	230	141	241	304	54	70	136	121	206	115
Number Permits	3	3	9	5	10	11	3	4	6	5	7	4
Prev Incmpt-Total Days	839	204	96	111	1330	543	1873	333	904	0	155	0
Number Permits	2	2	1	1	3	6	5	4	4	0	1	0

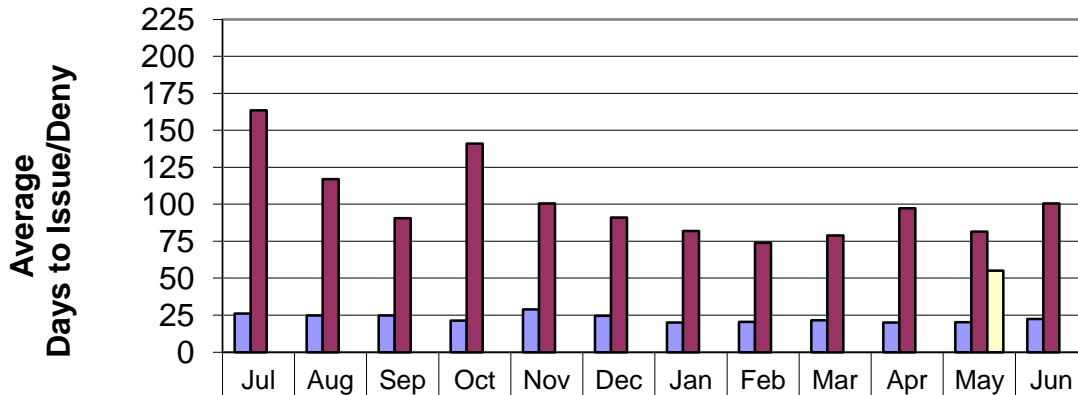
**FY 2011 Air Quality
Average Number of Days
to Issue or Deny NSR Permits ***



Total # Days	975	551	1106	832	588	1417	594	576	1310	665	748	1062
# Permits	11	11	18	10	8	28	11	15	21	10	17	16
□ Avg. Days	89	50	61	83	73	51	54	38	62	67	44	66

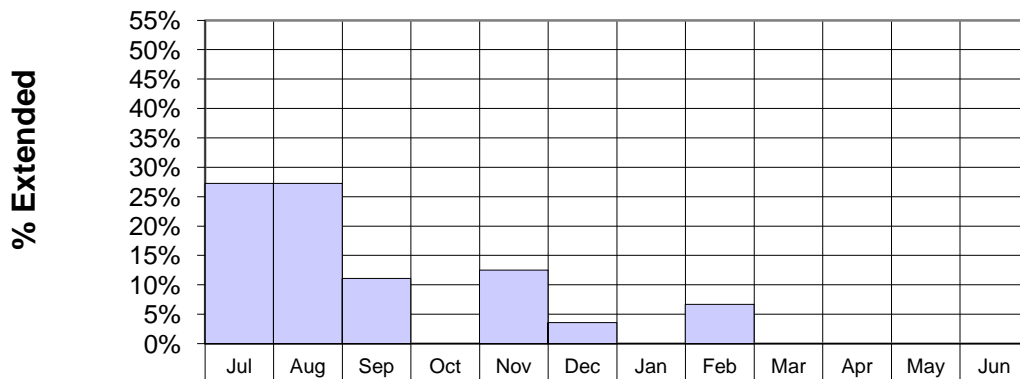
*Excludes PSD (Maj Mod & New) & NOIs, includes GCP's and technical revisions

FY 2011 Air Quality Average Number of Days to Issue or Deny NSR Permits by Categories



■ Ave 30 Days	26	25	25	21	29	25	20	21	22	20	20	22
■ Ave 90 Days	164	117	91	141	101	91	82	74	79	97	82	101
□ Ave 180 Days	0	0	0	0	0	0	0	0	0	0	55	0
No. 30-Day Actions	6	8	8	5	3	17	5	10	6	4	10	7
No. 90-Day Actions	5	3	10	5	5	11	6	5	15	6	6	9
No. 180-Day Actions	0	0	0	0	0	0	0	0	0	0	1	0

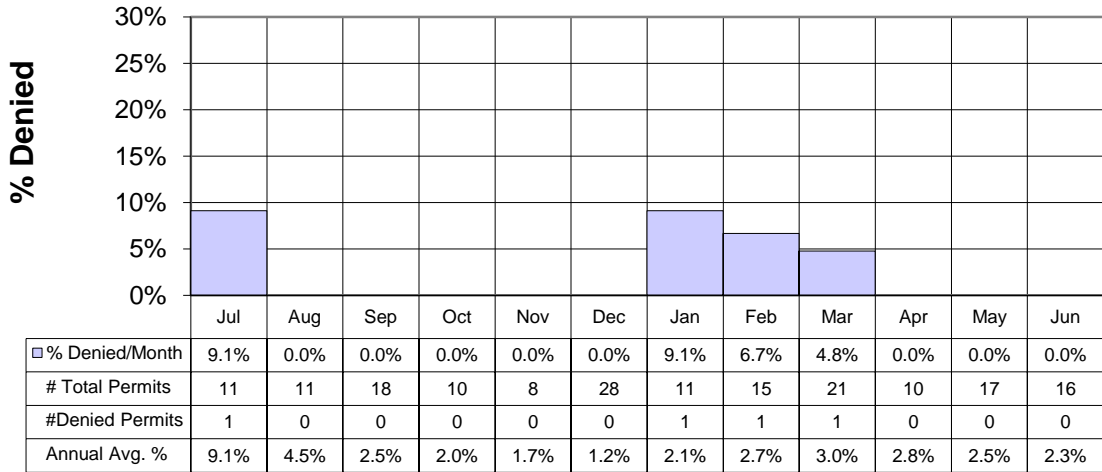
FY 2011 Air Quality Permit Extensions Approved



□ % Extended/Month	27.3%	27.3%	11.1%	0.0%	12.5%	3.6%	0.0%	6.7%	0.0%	0.0%	0.0%	0.0%
# Total Permits	11	11	18	10	8	28	11	15	21	10	17	16
#Extended Permits	3	3	2	0	1	1	0	1	0	0	0	0
Annual Avg. %	27.3%	27.3%	20.0%	16.0%	15.5%	11.6%	10.3%	9.8%	8.3%	7.7%	6.9%	6.3%

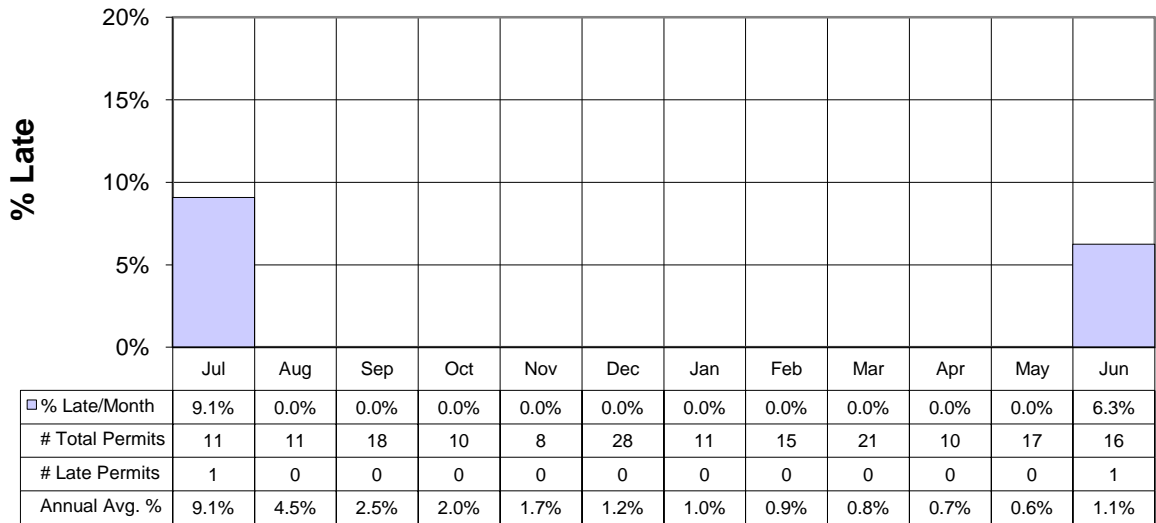
001M7 - Agave Dagger Draw Gas Plant, 90 days, 2620M1 - Valencia Power Plant, 90 days, 1684M3 - North Indian Basin No11 Compressor Station, 90 days, 1555M4 - Chaco Gas Plant, 90 days, 0495M10 - Mosaic Potash Carlsbad, 90 days, 4166 - Premier Pellets, 90 days, 4167- XTO/Tiger 12 Production Facility, 90 days
2910M1 - Peavey Company/W Clovis Animal Feed Manufacturing Facility, 90 days, 3063M2 - Mainline Rock and Ballast - Torrance Quarry and Rail Loadout, 90 days, 1554M1- EP Electric -Rio Grande Gen Station, 90 days, 755M7 - Intrepid

FY 2011 Air Quality NSR Permit Denials



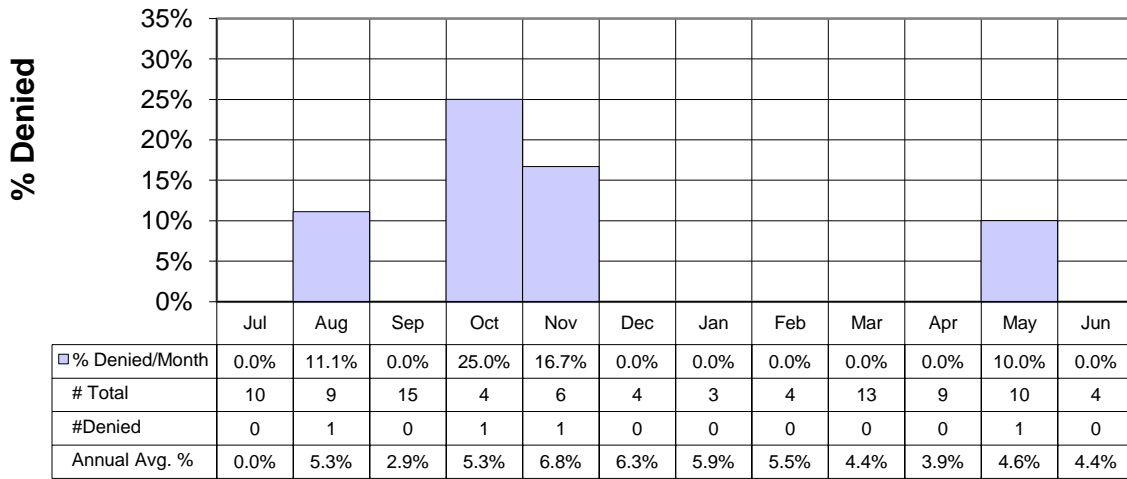
1347M2R1 - Oldcastle / Asphalt Plant, 0613M6R5 - ConocoPhillips / San Juan Gas Plant, 0339M4 - Williams / La Jara

FY 2011 Air Quality NSR Permit Issuance Delinquencies

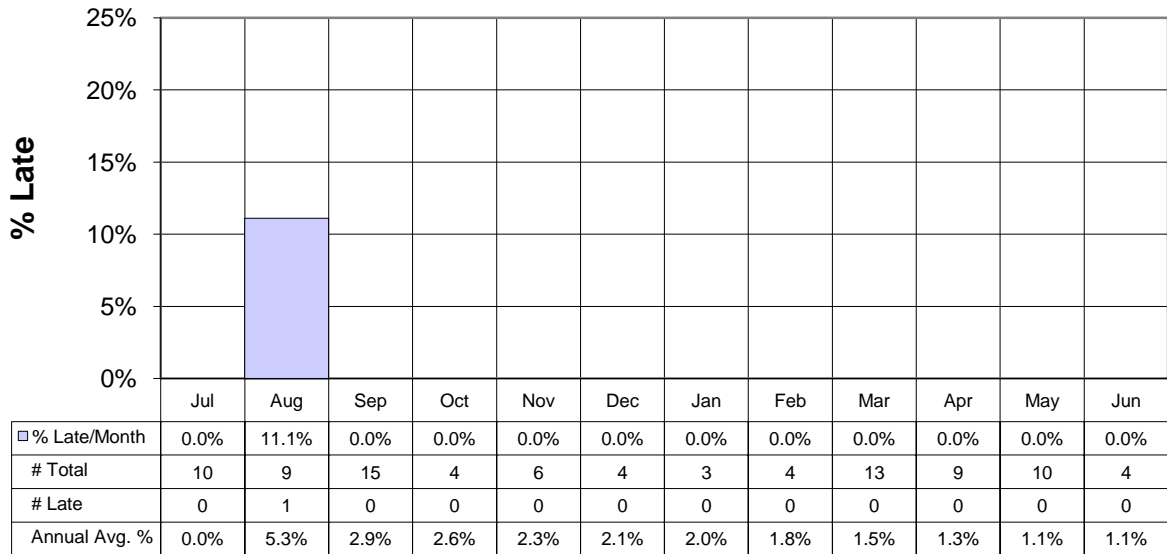


0042M6 - Dicaperl /Socorro Perlite Plant, 1554M1 - El Paso Electric/Rio Grande Generation station,

FY 2011 Air Quality NSR Relocation Denials



FY 2011 Air Quality NSR Relocation Approval Delinquencies



GCP2 2864 - Fowler Brothers/Portable Crusher