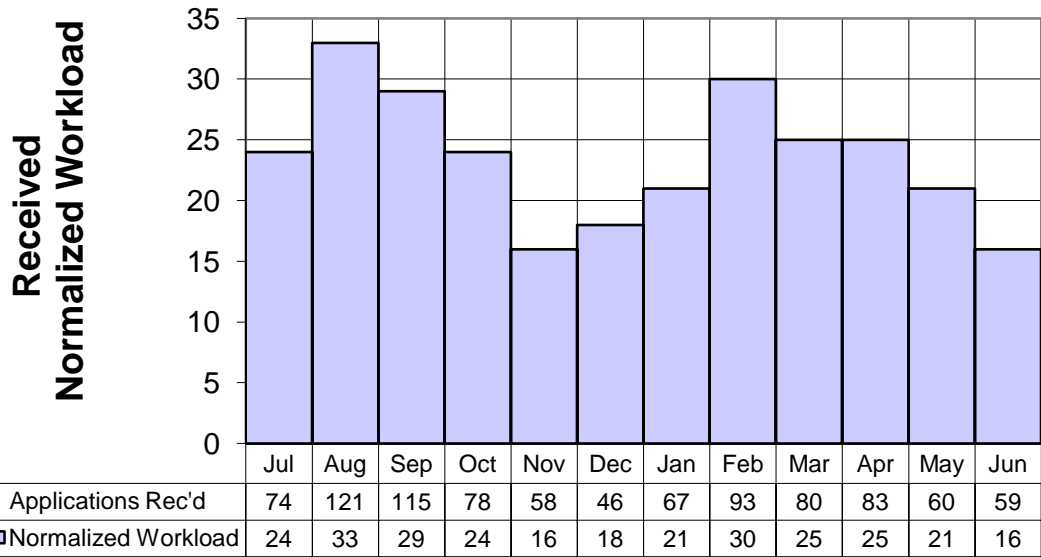
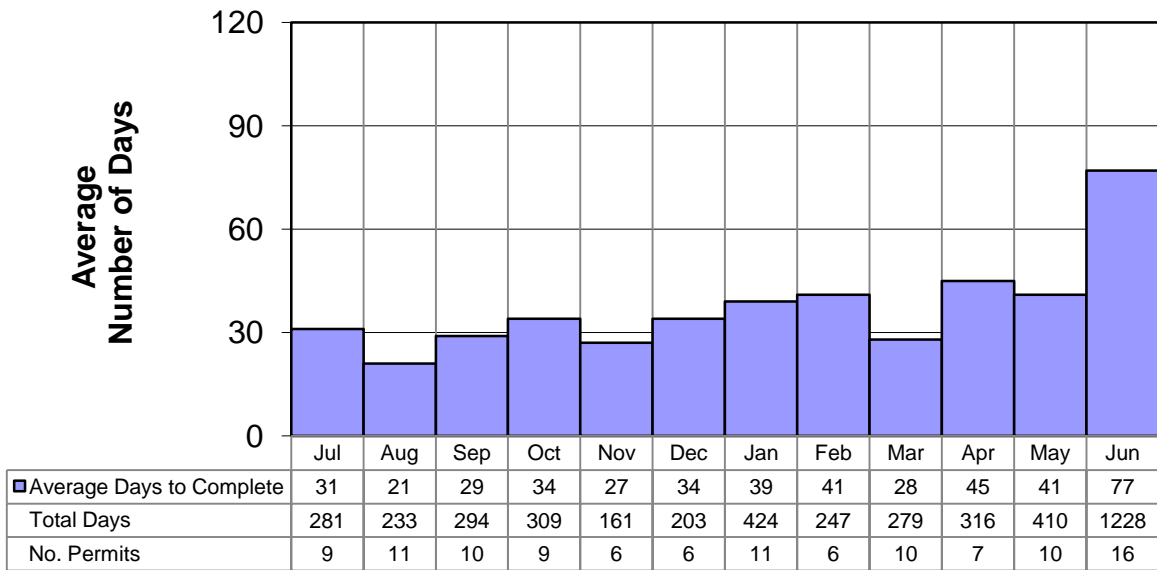


### FY 2012 Air Quality NSR Normalized Workload

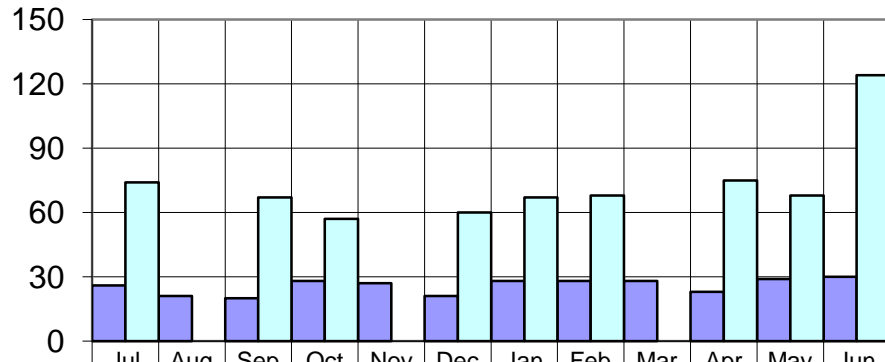


### FY 2012 Air Quality NSR Average Number of Days to Rule Complete



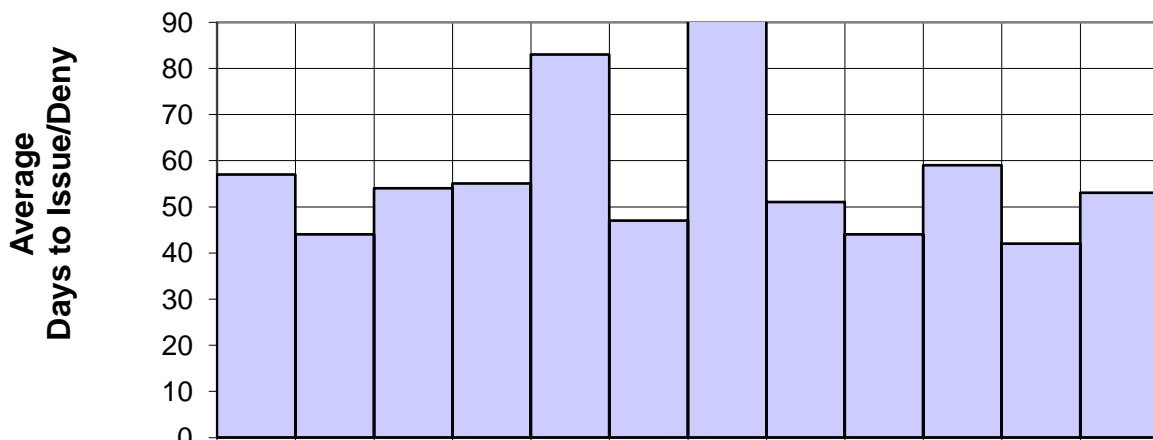
**FY 2012 Air Quality  
Average Number of Days to Rule Complete by Category  
(Complete First-Time Vs. Previously Ruled Incomplete)**

**Average  
Days To Rule Complete**



■ Avg. Days-Complete First Time	26	21	20	28	27	21	28	28	28	23	29	30
□ Avg. Days-Previously Ruled Incomplete	74	0	67	57	0	60	67	68	0	75	68	124
First Time-Total Days	207	233	160	195	161	83	223	111	279	91	206	237
Number Permits	8	11	8	7	6	4	8	4	10	4	7	8
Prev Incmpt-Total Days	74	0	134	114	0	120	201	136	0	225	203	991
Number Permits	1	0	2	2	0	2	3	2	0	3	3	8

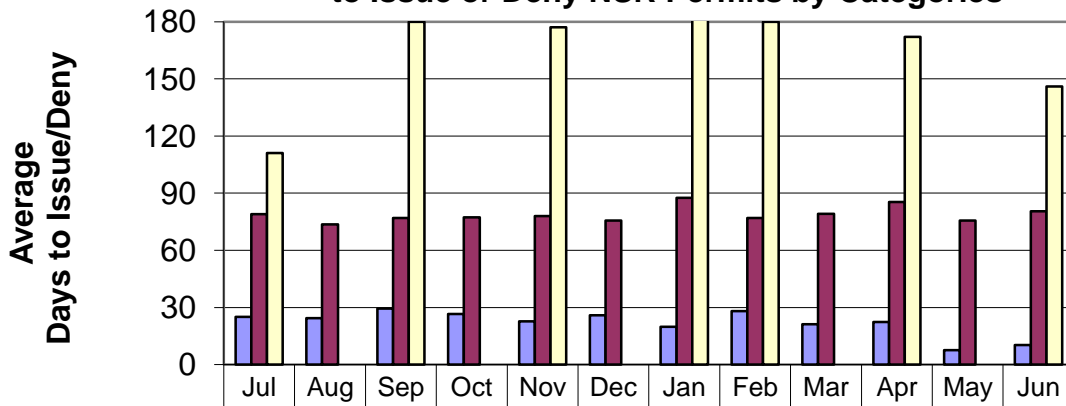
**FY 2012 Air Quality  
Average Number of Days  
to Issue or Deny NSR Permits \***



	Jul	Aug	Sep	Oct	Nov	Dec	Jan	Feb	Mar	Apr	May	Jun
Total # Days	742	661	649	1090	1168	662	1499	872	566	1249	416	691
# Permits	13	15	12	20	15	14	11	17	13	21	10	13
□ Avg. Days	57	44	54	55	83	47	136	51	44	59	42	53

\*Excludes PSD (Maj Mod & New) & NOIs, includes GCP's and technical revisions

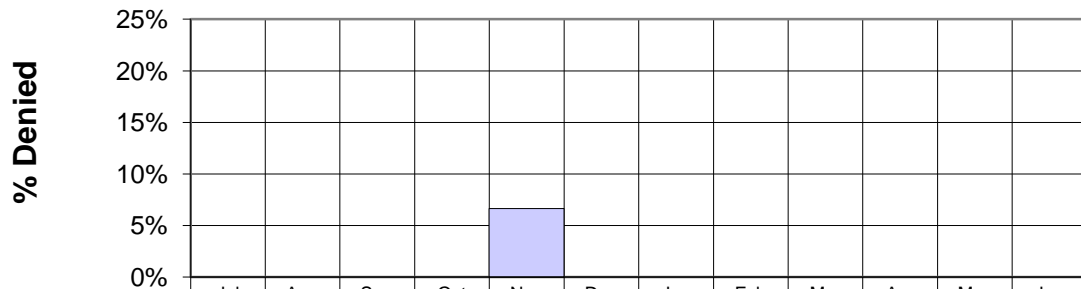
### FY 2012 Air Quality Average Number of Days to Issue or Deny NSR Permits by Categories



■ Avg 30 Days	25	24	30	27	23	26	20	28	21	22	8	10
■ Avg 90 Days	79	74	77	77	78	76	88	77	79	85	76	81
□ Avg 180 Days	111	0	180	0	177	0	401	180	0	172	0	146
No. 30-Day Actions	6	9	8	9	7	8	6	11	8	10	5	6
No. 90-Day Actions	6	6	3	11	4	6	2	5	5	10	5	6
No. 180-Day Actions	1	0	1	0	4	0	3	1	0	1	0	1

\*180 day actions includes 90 day extensions and PSD

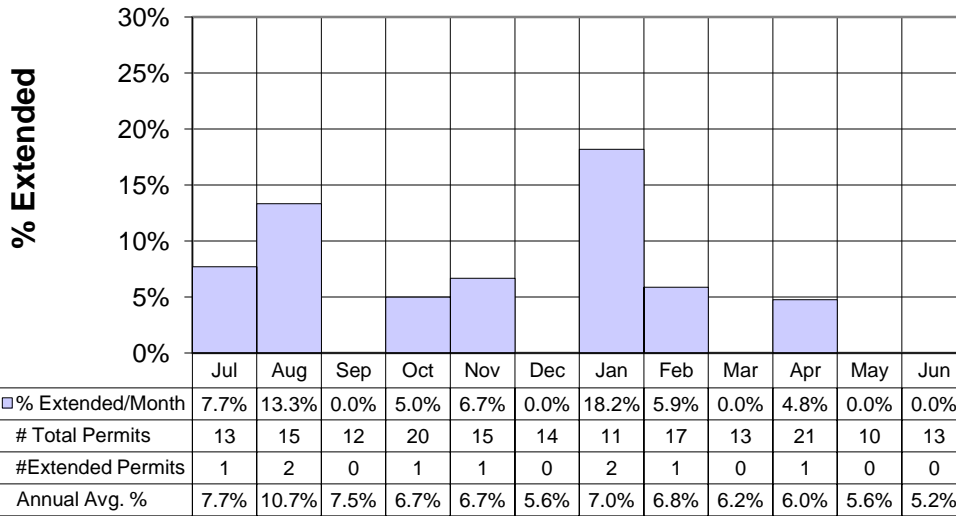
### FY 2012 Air Quality NSR Permit Denials



■ % Denied/Month	0.0%	0.0%	0.0%	0.0%	6.7%	0.0%	0.0%	0.0%	0.0%	0.0%	0.0%	0.0%
# Total Permits	13	15	12	20	15	14	11	17	13	21	10	13
#Denied Permits	0	0	0	0	1	0	0	0	0	0	0	0
Annual Avg. %	0.0%	0.0%	0.0%	0.0%	1.3%	1.1%	1.0%	0.9%	0.8%	0.7%	0.6%	0.6%
Series5												

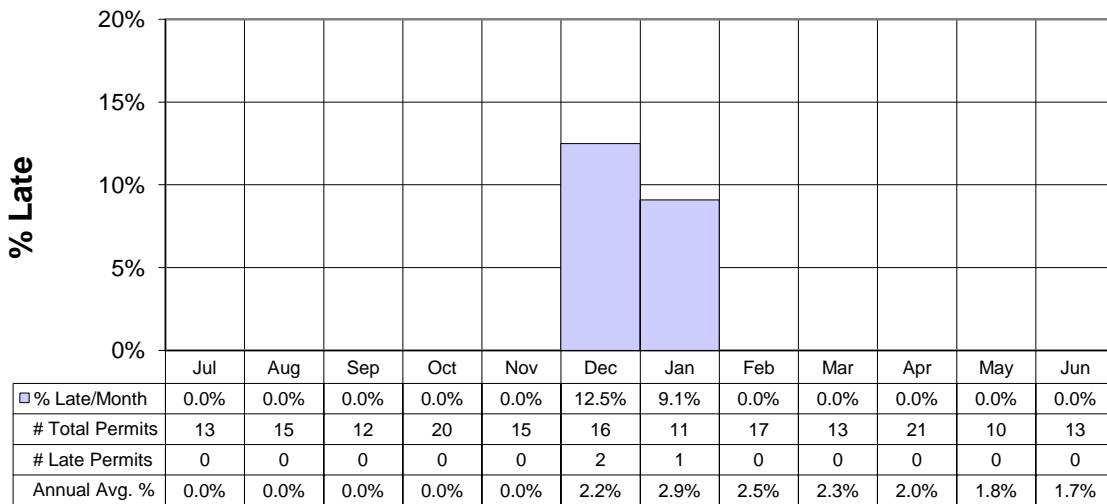
GCP1 - 1649, Tipe Construction

### FY 2012 Air Quality Permit Extensions Approved



110M5 - Versado, Monument Gas Plant / 0039M6 - DCP, Linam Ranch Gas Plant / 3295M1 - Mesa Verde Crushing Plant 600 TPH / 0298M5 - Freeport-McMoRan, Chino Mines Co. / 4512 - C & E Concrete, Pulverized Limestone Crushing Operation / 4561 - SPS, Quay County Generating Plant / 4573 - International Isotopes Fluorine Products Facility / 0879M3 - C&E Concrete, Tinaja Pit / 1313M5 - ConocoPhillips, Wingate Frac Plant

### FY 2012 Air Quality NSR Permit Issuance Delinquencies



3594 - JHC, Crusher No 3 / 3691 - JHC, Hot Mix Asphalt No 3 / 4053 - J  
D Heiskell Co, Portales Plant

