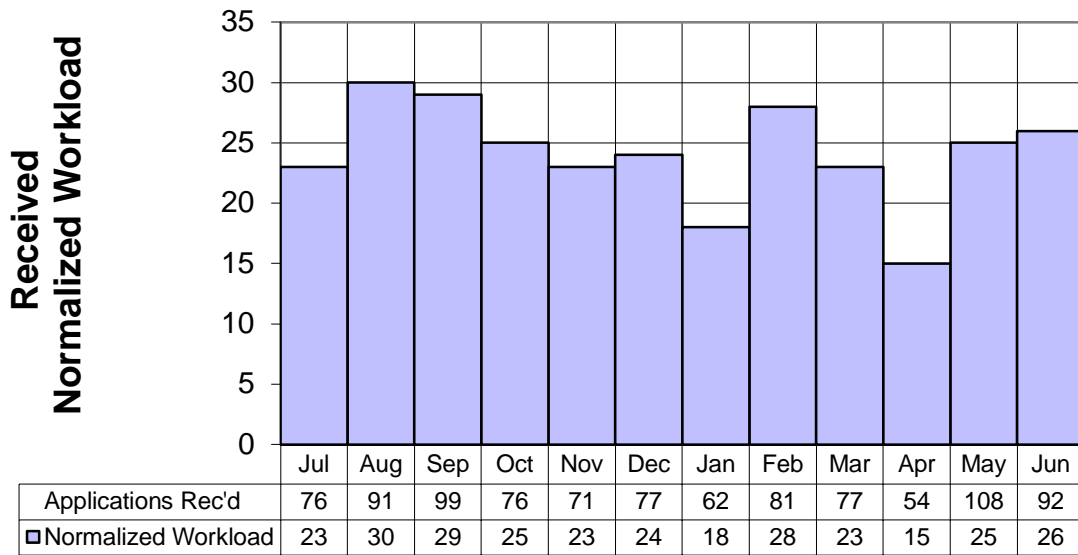
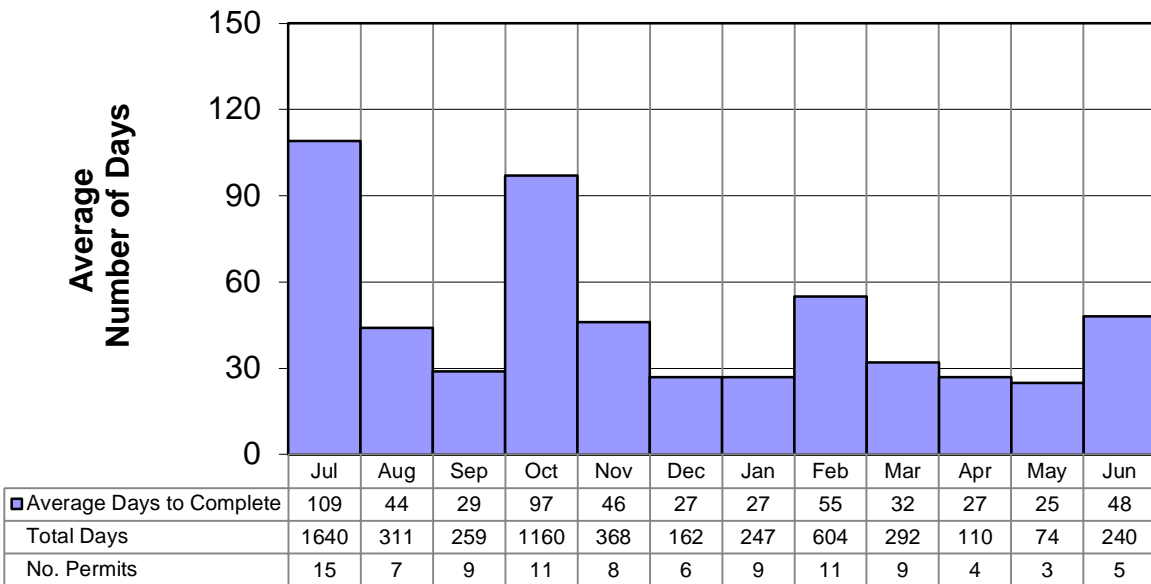


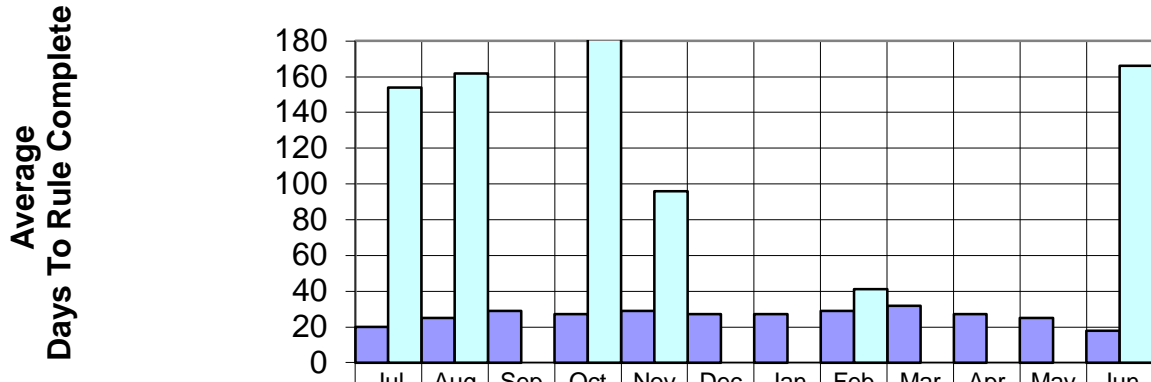
### FY 2013 Air Quality NSR Normalized Workload



### FY 2013 Air Quality NSR Average Number of Days to Rule Complete

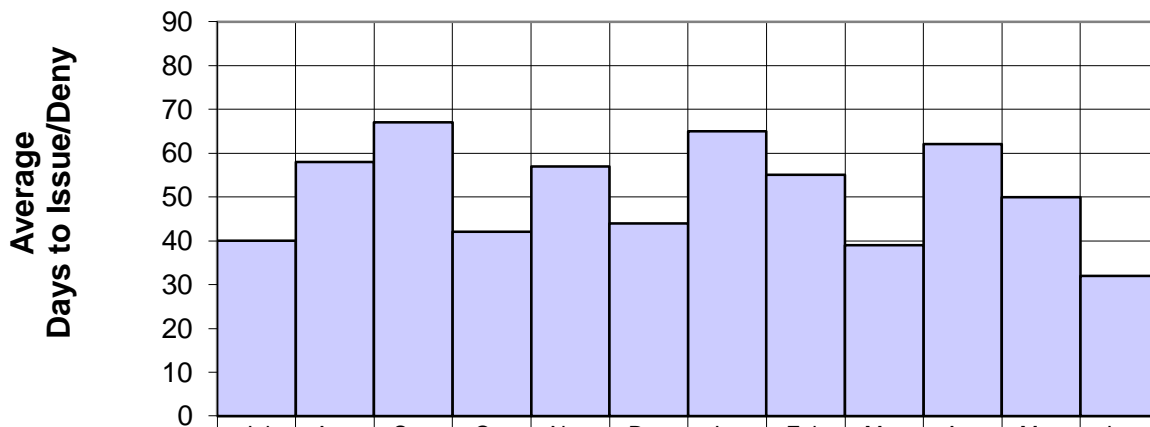


**FY 2013 Air Quality  
Average Number of Days to Rule Complete by Category  
(Complete First-Time Vs. Previously Ruled Incomplete)**



■ Avg. Days-Complete First Time	20	25	29	27	29	27	27	29	32	27	25	18
□ Avg. Days-Previously Ruled Incomplete	154	162	0	860	96	0	0	41	0	0	0	166
First Time-Total Days	102	149	259	300	175	162	247	145	292	110	74	74
Number Permits	5	6	9	11	6	6	9	5	9	4	3	4
Prev Incmpt-Total Days	1538	162	0	860	193	0	0	41	0	0	0	166
Number Permits	10	1	0	1	2	0	0	1	0	0	0	1

**FY 2013 Air Quality  
Average Number of Days  
to Issue or Deny NSR Permits \***

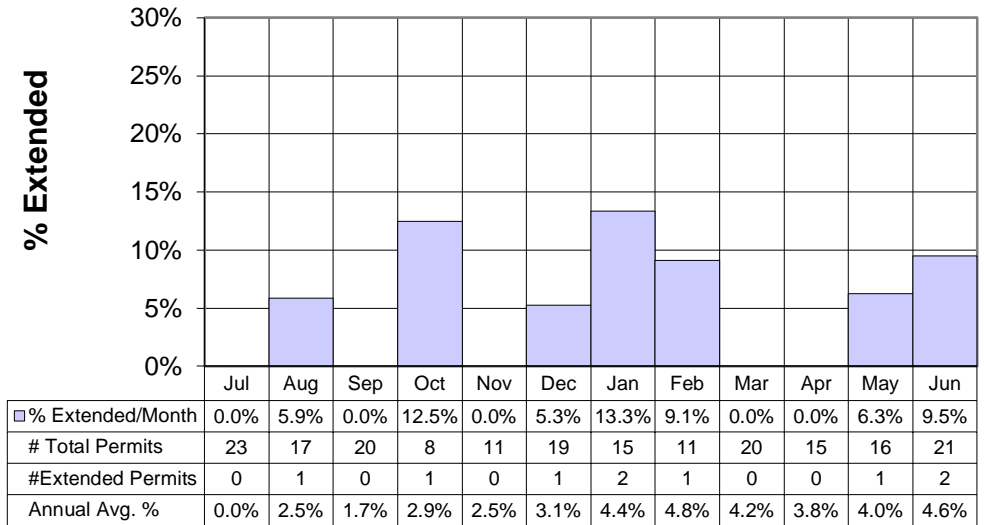


Total No. Days	922	990	1340	338	622	845	973	604	789	935	792	677
No. Permits	23	17	20	8	11	19	15	11	20	15	16	21
□ Avg. Days	40	58	67	42	57	44	65	55	39	62	50	32

\*Excludes PSD (Maj Mod & New) & NOIs, includes GCP's and technical revisions

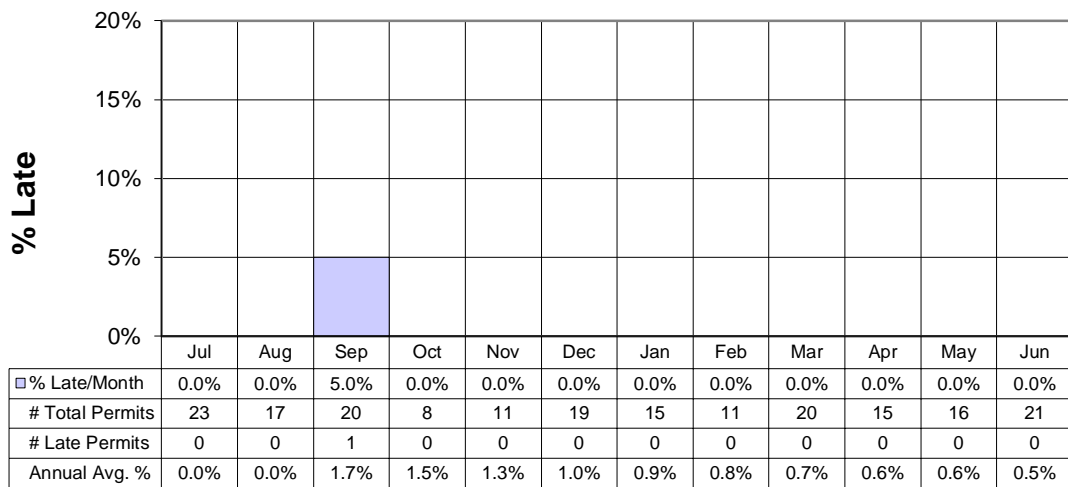


### FY 2013 Air Quality Permit Extensions Approved



4772 - Pecos Valley Renewable Power Plant , 90 days 313M4 -Baker Hughes, Artesia Blend Plant, 90 days 1664M4 - DCP Hobbs Gas Plant, 90 days 2013M4 - San Juan River Gas Plant, 90 days PSD2450M2 - PNM Luna Energy Facility, 90 days 1097M7 - SUGS, Jal No 3 Gas Plant, 90 days 201M4 - Questa Mine, 90 days 2112M1 - Cemex, Vado Plant 400TPH, 90 days

### FY 2013 Air Quality NSR Permit Issuance Delinquencies



0879M3- C & E Concrete - 600 TPH Portable Rock Crushing Facility - Tinaja Pit

