



SUSANA MARTINEZ
GOVERNOR

JOHN A. SANCHEZ
LT. GOVERNOR

New Mexico
ENVIRONMENT DEPARTMENT

525 Camino de los Marquez, Suite 1
Santa Fe, NM 87505-1816
Phone (505) 476-4300
Fax (505) 476-4375
www.env.nm.gov



BUTCH TONGATE
CABINET SECRETARY

BRUCE YURDIN
ACTING DEPUTY SECRETARY

PUBLIC INVOLVEMENT PLAN (PIP)
Air Quality Bureau Air Permit Application

Version P08.06.18

Date: September 28, 2018

Applicant: Western Farmers Electric Cooperative (Owner); PIC Group, Inc. (Operator)

Facility Name: LCEC Generation

Air Quality Permit Application Number: P262-R1

Location: Approximately 1.5 miles northeast of Lovington, Lea County, New Mexico

Latitude: 32.970833

Longitude: -103.322222

1. Overview of Air Quality Bureau's plan of action for addressing the community's needs and concerns for processing Air Quality Permit Applications:

The New Mexico Environment Department (Department), Air Quality Bureau (AQB) developed this Public Involvement Plan (PIP) for the processing of air quality permit applications in accordance with the requirements at 20.2.70 NMAC for the facility listed above.

The AQB encourages the public to learn about and get involved in regulatory decision-making opportunities for this permit application. The purpose of this PIP is to provide public participation opportunities and information that may be needed to participate in this permitting activity.

This air quality regulation does require public participation outreach throughout different stages of the permitting process. The AQB will meet the public participation requirements by following this PIP, which includes all applicable policy, regulatory and statutory public participation requirements.

In developing this PIP, community participation needs for this permitting action were assessed to ensure appropriate promotion of public outreach by identifying whether there is a combination of environmental and demographic factors (i.e., low income community, minority community, limited English proficiency individuals, Linguistically Isolated Households, etc.) that may impact public participation. This assessment identifies community outreach needs and provides for public access opportunities above and beyond statutorily mandated requirements, and underscores the provision of adequate public access to information about this permit application.

As much as possible, public participation and informational activities related to this permit application will be held within the regulatory timelines outlined below.

- a. AQB regulations at 20.2.70 NMAC require that the application must be ruled complete no more than 60 days after receipt. The AQB will publish a public notice for this application in a newspaper of general circulation in the area closest to the location of the facility, when the draft permit is issued for comment. See section 4.d below for more information. The public notice contains a paragraph in Spanish directing Spanish speaking interested parties to call the AQB at (505) 476-5557 to speak to Spanish speaking staff for additional information regarding this permitting action.
- b. The AQB will provide a copy of the public notice, the air quality permit application, and this PIP to the NMED field office at:

Hobbs
2120 N. Alto
Hobbs, NM 88240
Phone (575) 397-6910
Fax (575) 397-6916

- c. AQB regulations require that the public notice be sent to interested parties maintained on a mailing list. See Section 4.b below for more information.
- d. AQB regulations require that the public notice be sent to the “affected programs” as defined at 20.2.70 NMAC. See Section 4.f below for more information.
- e. Public notice shall be followed by a 30-day public comment period that starts on the day that the notice is published in the newspaper. See Section 4.h below for details.
- f. AQB regulations require that the permit must be issued, issued subject to conditions, or denied within eighteen (18) months after the department deems the application administratively complete.

2. Contact list of Department and AQB staff with phone numbers and email addresses:

a. AQB contact for questions about this application or PIP:

Joseph Mashburn
New Mexico Environment Department
Air Quality Bureau
525 Camino de los Marquez, Suite 1
Santa Fe, New Mexico, 87505
505-476-4329
Joseph.Mashburn@state.nm.us

See Section 1 above for contact information for the NMED District office.

In addition, a contact list for Air Quality Bureau personnel can be found at:
<https://www.env.nm.gov/air-quality/air-quality-bureau-contacts/>

b. Non-English Language Speaker Assistance and Accommodations

Non-English speakers may call the AQB contact listed in this PIP and request language assistance services, such as an interpreter, so they can learn more about this permit application. Services may be arranged for translation of documents for meetings, for translators during meetings and for obtaining services for persons with disabilities. A phone-based interpretation service may be available for languages other than English.

The AQB may hold public meetings, open houses, stakeholder meetings, and/or a formal hearing depending on the interest in the application. In the event that a public meeting will be held regarding this permit application, any person requiring non-English Language Speaker Assistance, assistance for an interpreter or auxiliary aid (e.g., accommodations for persons who are disabled) to participate in public meetings related to this permit application (if applicable), please contact the person listed in item 2.a above, allowing at least 14 days prior to the meeting date. TDD or TTY users please access the number via the New Mexico Relay Network, 1-800-659-1779 (voice); TTY users: 1-800-659-8331).

c. Department Websites

New Mexico Environment Department - <https://www.env.nm.gov/>

Air Quality Bureau - <https://www.env.nm.gov/air-quality/>

d. Site Website

The AQB maintains a website location for the public notice for this permit application at: <https://www.env.nm.gov/air-quality/public-notice-of-permitting-actions/>.

3. Description of the community/stakeholder groups:

To provide for adequate public participation opportunities and meaningful involvement of persons regarding this permit application and to address potential or existing environmental justice areas, the affected communities must first be identified, informed about proposed environmental actions affecting the community, and invited to share their comments and concerns. The EJSCREEN tool developed by the U.S. Environmental Protection Agency (EPA) helps identify communities that are low income and minority populations that may benefit from a variety of approaches for notification and outreach communication. This information is used to help encourage the community’s involvement in the public process for environmental activities or actions.

Using the default 4-mile radius from the facility, the results of the EJScreen ACS Summary Report (attached) are listed in the table below.

Population and Income Data				
Total Population:	13,728		Per capita income of community:	\$23,245
Minority Population, %:	67%		US Per Capita Income*:	\$29,829
Total number of households:	4,168		Total Number (and Percent) of Linguistically Isolated Households:	438 (10.5%)

*US Per Capita Income 2012-2016; <https://www.census.gov/quickfacts/fact/table/US/HSG030210>

Population by Race, %		Population by Ability to Speak English, %	
White	86%	Speak Only English	50%
Black	1%	Non-English at Home	50%
American Indian	0%	Speak English "very well"	31%
Asian	0%	Speak English "well"	7%
Pacific Islander	0%	Speak English "not well"	8%
Other Race	11%	Speak English "not at all"	4%
Two or More Races	2%	Speak English "less than very well"	19%

Linguistically Isolated Household Details, %	List other Languages (if applicable)
Speak Spanish	100%
Speak Other Indo-European Languages	0%
Speak Asian Pacific Island Languages	0%
Speak Other Languages	0%

No additional community or stakeholder groups have been identified other than those listed in 4.e and 4.f in this document. No comments have been received from any stakeholder group.

It is important for the AQB to incorporate the linguistic and communication needs of this community when conducting public outreach and participation activities. To help accomplish this, the AQB will provide information in English, in public comment notices, public meeting notices (if applicable), and other announcements (radio broadcasts, brochures, signs, postcards, etc.) and strive to make public participation efforts as inclusive as possible within AQB budget and time limitations. The NMED Hobbs field office will serve as an access area for the AQB to leave hard copies of important documents and information about how to comment on this permit application.

The AQB maintains information regarding this air quality permit application at the following locations:

- a. On the Air Quality Bureau website, see Section 2.c above.**
- b. At the District Office listed in Section 1.b above.**
- c. At the main office location:**
 New Mexico Environment Department
 Air Quality Bureau
 525 Camino de los Marquez, Suite 1
 Santa Fe, New Mexico, 87505

4. Detailed actions and outreach activities the AQB Permitting Section will take to reach the affected public:

a. Overview

The public may ask questions about this permit application at any time. Interested community members do not need to wait for a formal public comment period to contact the AQB.

However, the AQB emphasizes that to be included in the administrative record, comments solicited by public notices about the proposed activity must be submitted during the noticed comment periods, and in accordance with the public notice. Additionally, the public may request to review documents related to the facility at the AQB or one of the document repositories listed in items 1.b and 2.c above. This is the most direct way to learn more about and be involved in the decision-making process for the proposed activity or proceeding.

Based on the demographics report discussed in the PIP, the history of public involvement at the facility and the facility background, basic information about public involvement opportunities will be in English. This information will include how to request materials in Spanish or to speak with AQB staff through an interpreter. Further details about public participation for this activity are outlined below.

b. Postal Mailing or E-Mailing of Notices to Persons on the Facility-Specific Mailing List

AQB regulations require the use of a mailing list. The AQB maintains a mailing list that includes individuals interested in this permit application. This list is updated on a regular basis as a combination of all previously interested persons who requested that the AQB provide them with information about permit applications for this facility. The AQB regularly maintains contact information which is updated or supplemented, if additional information is found.

The list also includes addresses of states, local air pollution control programs, and Indian tribes and pueblos, that are within 50 miles of the source.

Additional individuals, organizations, and other interested parties are added to the mailing list as requested. If you would like to be added to the mailing list for this facility, contact the permit writer listed in item number 2a above.

c. Email Updates

The AQB may use email updates. To sign up for email updates, go to the AQB website at: <https://www.env.nm.gov/air-quality/> and click on the “Subscribe to Email Alerts” button (see graphic below):



Subscribe to Email Alerts

d. Notices in the State Newspaper and Local Newspapers

The public notice for this permit application will be published in English in the Legal Section of the following newspaper:

Hobbs News Sun: <http://www.hobbsnews.com/>

e. Mailing to the Governor or President of Indian Tribes, Pueblos or Nations

AQB regulations and the evaluation of the facility location and associated demographics, require notification to Tribes, Pueblos or Nations about this permit application for facilities located within a specified distance.

Email notification will be sent to the contacts at the Tribes, Pueblos and/or Nations listed below:

There are no Tribes, Pueblos, or Nations within 50 miles of this facility.

f. Affected Local, State, or Federal Government Agencies, and Active Land Grants

AQB regulations require identifying and notifying local, state or federal government agencies about this permit application.

The following affected Local, State, or Federal Government Agencies will be notified by email:

US EPA Region VI and State of Texas.

g. Public Meeting Notices, Public Comment Notices, and Other Notices

AQB may hold public meetings, open houses, stakeholder meetings, and/or a formal hearing depending on the interest in the application. Based on historical information and the results of the initial screening, there is no public meeting planned at this time for this permit application. If it is determined that a public meeting will be required, notice will be provided to the community as follows:

- 1) Via a newspaper of general circulation in the area closest to the location of the facility.
- 2) Locations commonly frequented by the general public, such as a nearby post office, public library, or city hall.
- 3) All persons and organizations that have expressed interest and are on a list maintained by AQB.
- 4) Via a public service announcement to at least one radio or television station which serves the municipality or county in which the source is or is proposed to be located.
- 5) The notices will be translated for non-English speaking participants, if required.
- 6) The notices will include information for requesting accommodations for those with disabilities as listed in item 2b above.

AQB will locate an appropriate venue based on the availability to the community to access the meeting, and the specific needs of the affected community (e.g. size of community, community locations, impacts, etc.).

AQB may reschedule the meeting due to inclement weather. If rescheduled, AQB will provide as much advance notice as possible and reschedule for an appropriate time and date.

Meetings will be scheduled to make them as accessible and user-friendly as practical, considering work schedules, dinner hours and other community commitments. To the extent possible, the meeting will be held at a location that is local and convenient, and meet American with Disabilities Act (ADA) standards. In addition, whenever practical and appropriate, translators for limited-English speaking communities, or assistance for hearing-impaired individuals may be available. Information in public notices for a public meeting will adhere to AQB regulations, statutes and policies.

h. Public Comment Periods


AQB regulations require that thirty (30) days shall be provided for public and affected program comment on the draft permit. Interested persons may obtain the draft operating permit, submit written comments, or request a public hearing by contacting the permit writer listed in section 2.a above.

To determine the end of the EPA 45-day Proposed permit review period, see the “Operating Permit Timeline for New Mexico or Albuquerque” located on the EPA website at:
<https://www.epa.gov/caa-permitting/operating-permit-timeline-new-mexico-or-albuquerque>

The PIP has been reviewed and approved by the AQB Bureau Chief.



Liz Bisbey-Kuehn
Bureau Chief
Air Quality Bureau



Date approved

Attachments: EJSCREEN Printout

Location: User-specified point center at 32.970833, -103.322222
 Ring (buffer): 4-mile radius
 Description: ACS Western Farmers- LCEC Gen (P262R1)

Summary of ACS Estimates		2012 - 2016
Population		13,728
Population Density (per sq. mile)		275
Minority Population		9,149
% Minority		67%
Households		4,168
Housing Units		4,846
Housing Units Built Before 1950		501
Per Capita Income		23,245
Land Area (sq. miles) (Source: SF1)		49.89
% Land Area		100%
Water Area (sq. miles) (Source: SF1)		0.09
% Water Area		0%

	2012 - 2016 ACS Estimates	Percent	MOE (±)
Population by Race			
Total	13,728	100%	468
Population Reporting One Race	13,477	98%	1,114
White	11,739	86%	511
Black	148	1%	144
American Indian	32	0%	17
Asian	0	0%	11
Pacific Islander	0	0%	11
Some Other Race	1,558	11%	420
Population Reporting Two or More Races	251	2%	91
Total Hispanic Population	8,953	65%	461
Total Non-Hispanic Population	4,775		
White Alone	4,579	33%	231
Black Alone	67	0%	69
American Indian Alone	17	0%	17
Non-Hispanic Asian Alone	0	0%	11
Pacific Islander Alone	0	0%	11
Other Race Alone	44	0%	49
Two or More Races Alone	68	0%	66
Population by Sex			
Male	6,749	49%	266
Female	6,979	51%	308
Population by Age			
Age 0-4	1,179	9%	121
Age 0-17	4,170	30%	194
Age 18+	9,558	70%	272
Age 65+	1,517	11%	100

Data Note: Detail may not sum to totals due to rounding. Hispanic population can be of any race.
 N/A means not available. Source: U.S. Census Bureau, American Community Survey (ACS) 2012 - 2016.

Location: User-specified point center at 32.970833, -103.322222

Ring (buffer): 4-mile radius

Description: ACS Western Farmers- LCEC Gen (P262R1)

	2012 - 2016 ACS Estimates	Percent	MOE (±)
Population 25+ by Educational Attainment			
Total	7,939	100%	259
Less than 9th Grade	1,198	15%	104
9th - 12th Grade, No Diploma	1,368	17%	107
High School Graduate	2,359	30%	164
Some College, No Degree	2,284	29%	144
Associate Degree	546	7%	73
Bachelor's Degree or more	729	9%	84
Population Age 5+ Years by Ability to Speak English			
Total	12,549	100%	409
Speak only English	6,292	50%	277
Non-English at Home ¹⁺²⁺³⁺⁴	6,257	50%	280
¹ Speak English "very well"	3,899	31%	250
² Speak English "well"	867	7%	120
³ Speak English "not well"	984	8%	131
⁴ Speak English "not at all"	507	4%	97
³⁺⁴ Speak English "less than well"	1,491	12%	144
²⁺³⁺⁴ Speak English "less than very well"	2,358	19%	174
Linguistically Isolated Households*			
Total	438	100%	86
Speak Spanish	438	100%	85
Speak Other Indo-European Languages	0	0%	11
Speak Asian-Pacific Island Languages	0	0%	11
Speak Other Languages	0	0%	11
Households by Household Income			
Household Income Base	4,168	100%	132
< \$15,000	525	13%	80
\$15,000 - \$25,000	399	10%	63
\$25,000 - \$50,000	1,079	26%	90
\$50,000 - \$75,000	645	15%	88
\$75,000 +	1,520	36%	107
Occupied Housing Units by Tenure			
Total	4,168	100%	132
Owner Occupied	2,877	69%	102
Renter Occupied	1,291	31%	113
Employed Population Age 16+ Years			
Total	9,980	100%	332
In Labor Force	6,029	60%	245
Civilian Unemployed in Labor Force	503	5%	89
Not In Labor Force	3,951	40%	196

Data Note: Detail may not sum to totals due to rounding. Hispanic population can be of any race.

N/A means not available. Source: U.S. Census Bureau, American Community Survey (ACS)

*Households in which no one 14 and over speaks English "very well" or speaks English only.

Location: User-specified point center at 32.970833, -103.322222

Ring (buffer): 4-mile radius

Description: ACS Western Farmers- LCEC Gen (P262R1)

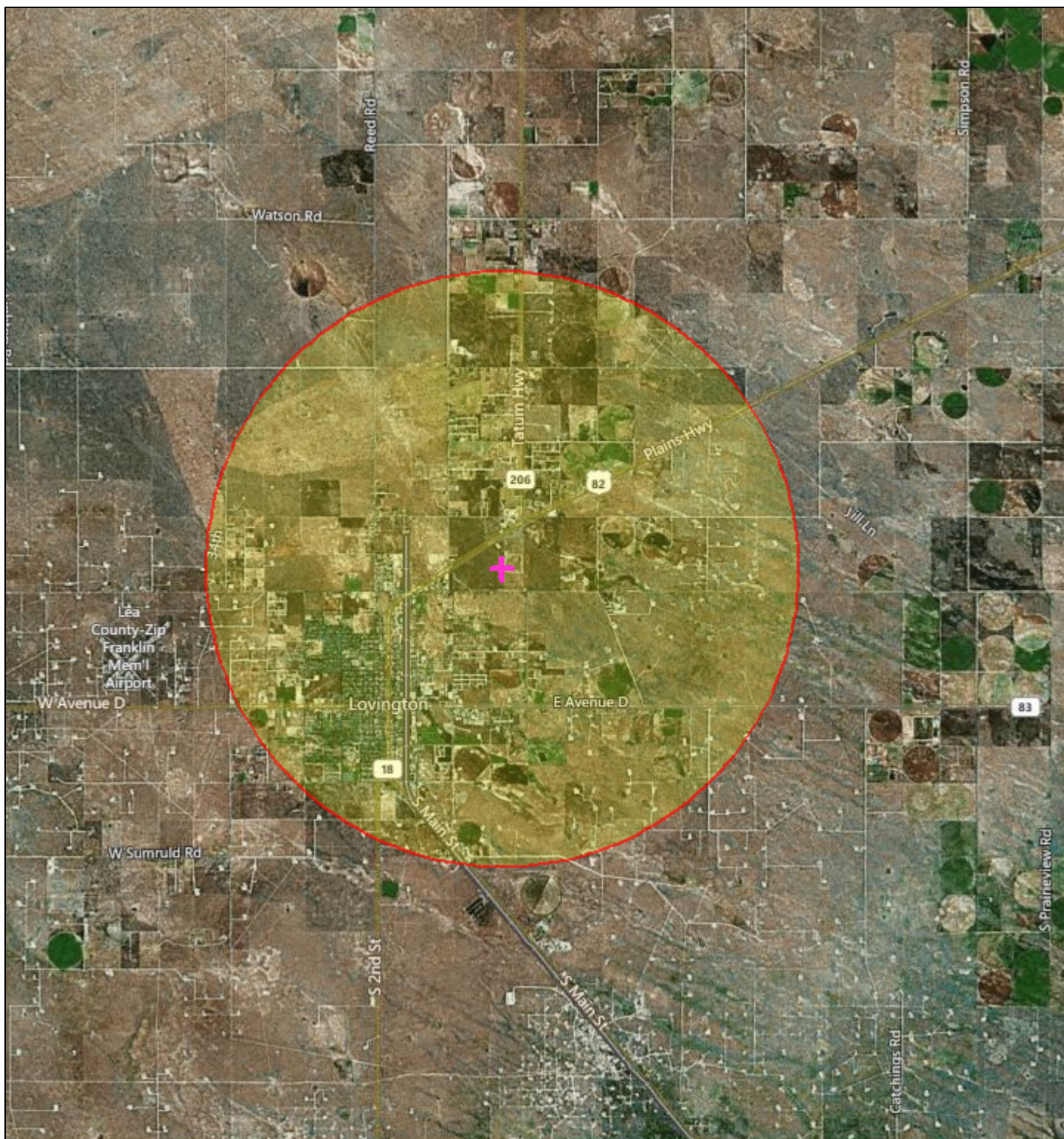
	2012 - 2016 ACS Estimates	Percent	MOE (±)
Population by Language Spoken at Home*			
Total (persons age 5 and above)	11,098	100%	362
English	5,400	49%	420
Spanish	5,672	51%	367
French	8	0%	11
French Creole	N/A	N/A	N/A
Italian	N/A	N/A	N/A
Portuguese	N/A	N/A	N/A
German	0	0%	11
Yiddish	N/A	N/A	N/A
Other West Germanic	N/A	N/A	N/A
Scandinavian	N/A	N/A	N/A
Greek	N/A	N/A	N/A
Russian	N/A	N/A	N/A
Polish	N/A	N/A	N/A
Serbo-Croatian	N/A	N/A	N/A
Other Slavic	N/A	N/A	N/A
Armenian	N/A	N/A	N/A
Persian	N/A	N/A	N/A
Gujarathi	N/A	N/A	N/A
Hindi	N/A	N/A	N/A
Urdu	N/A	N/A	N/A
Other Indic	N/A	N/A	N/A
Other Indo-European	0	0%	11
Chinese	0	0%	11
Japanese	N/A	N/A	N/A
Korean	0	0%	11
Mon-Khmer, Cambodian	N/A	N/A	N/A
Hmong	N/A	N/A	N/A
Thai	N/A	N/A	N/A
Laotian	N/A	N/A	N/A
Vietnamese	0	0%	11
Other Asian	0	0%	11
Tagalog	0	0%	11
Other Pacific Island	N/A	N/A	N/A
Navajo	N/A	N/A	N/A
Other Native American	N/A	N/A	N/A
Hungarian	N/A	N/A	N/A
Arabic	0	0%	11
Hebrew	N/A	N/A	N/A
African	N/A	N/A	N/A
Other and non-specified	18	0%	17
Total Non-English	5,698	51%	550

Data Note: Detail may not sum to totals due to rounding. Hispanic population can be of any race.

N/A means not available. Source: U.S. Census Bureau, American Community Survey (ACS) 2012 - 2016.



*Population by Language Spoken at Home is available at the census tract summary level and up.

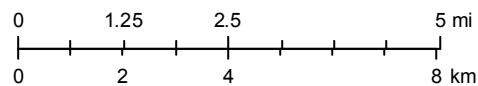
Western Farmers-LCEC Gen Plant, 4 mile (P262R1)



September 28, 2018

1:144,448

-  Buffer Area
-  Digitized Point



© 2018 Microsoft Corporation Earthstar Geographics SIO © 2018 HERE