



**MICHELLE LUJAN GRISHAM**  
GOVERNOR

**HOWIE C. MORALES**  
LT. GOVERNOR

## **New Mexico** **ENVIRONMENT DEPARTMENT**

525 Camino de los Marquez, Suite 1  
Santa Fe, NM 87505-1816  
Phone (505) 476-4300  
Fax (505) 476-4375  
www.env.nm.gov



**JAMES C. KENNEY**  
CABINET SECRETARY

**JENNIFER J. PRUETT**  
DEPUTY SECRETARY

### **PUBLIC INVOLVEMENT PLAN (PIP)**

#### **Air Quality Bureau Air Permit Application**

Version P2.20.19

Date: February 19, 2019

Applicant: Freeport-McMoRan Chino Mines Company

Facility Name: Chino Mine

Air Quality Permit Application Number: 0298-M9, AI-526

Location: 99 Santa Rita Mine Road, Vanadium, NM 88023; The facility is 3.89 miles northeast of Bayard, NM.

Latitude: 32.783594

Longitude: -108.069194

### **1. Overview of Air Quality Bureau's plan of action for addressing the community's needs and concerns for processing Air Quality Permit Applications:**

The New Mexico Environment Department (Department), Air Quality Bureau (AQB) developed this Public Involvement Plan (PIP) for the processing of air quality permit applications in accordance with the requirements at 20.2.72 NMAC for this facility. This air quality regulation does require public participation outreach throughout different stages of the permitting process. The AQB will meet the public participation requirements by following this PIP, which includes all applicable policy, regulatory and statutory public participation requirements.

In developing this PIP, community participation needs for this permitting action were assessed to ensure appropriate promotion of public outreach by identifying whether there is a combination of environmental and demographic factors (i.e., low income community, minority community, limited English proficiency individuals, Linguistically Isolated Households, etc.) that may impact public participation. This assessment identifies community outreach needs and provides for public access opportunities above and beyond statutorily mandated requirements, and underscores the provision of adequate public access to information about this permit application.

As much as possible, public participation and informational activities related to this permit application will be held within the regulatory timelines outlined below.

- a. AQB regulations at 20.2.72 NMAC require that the application must be ruled complete or incomplete no more than 30 days after receipt, and that a public notice for this application

must be published in a newspaper of general circulation where the facility is located. See section 4.c below for more information.

- b. The AQB will provide a copy of the public notice, the air quality permit application, and this PIP to the NMED field office at:

**Silver City**  
3082 32nd Street By-Pass Road, Suite D  
Silver City, NM 88061  
Phone (575) 388-1934  
Fax (575) 388-3258

- c. AQB regulations require that the public notice be sent to interested parties maintained on a mailing list. See Section 4.b below for more information.
- d. AQB regulations require that the public notice be sent to the “appropriate agency” as defined at 20.2.72 NMAC. See Section 4.e below for more information.
- e. In accordance with the evaluation of the site location and associated demographics, no additional means for disseminating information is necessary.
- f. Public notice shall be followed by a 30-day public comment period that starts on the day that the notice is published in the newspaper. See Section 4.g below for details.
- g. AQB regulations require that the permit must be issued, issued subject to conditions, or denied within ninety (90) days after the department deems the application administratively complete.

## **2. Contact list of AQB staff with phone numbers and email addresses:**

- a. **AQB contact for questions about this application or PIP (included in public notices and outreach materials):**

Joseph Kimbrell  
New Mexico Environment Department  
Air Quality Bureau  
525 Camino de los Marquez, Suite 1  
Santa Fe, New Mexico, 87505  
505-476-4347  
[Joseph.Kimbrell@state.nm.us](mailto:Joseph.Kimbrell@state.nm.us)

Electronic copies will be available at the following link, which will be included in public notices and outreach materials as appropriate: <https://www.env.nm.gov/air-quality/aqb-p-current-permitting-activites/>

- b. **Non-English Language Speaker Assistance and Accommodations**

The AQB may hold public meetings, open houses, stakeholder meetings, and/or a formal hearing depending on the interest in the application. Language assistance services may be arranged for translation of documents for meetings, for translators during meetings and for

obtaining services for persons with disabilities. A phone-based interpretation service may be available for languages other than English.

**3. Description of the community/stakeholder groups:**

To provide for adequate public participation opportunities and meaningful involvement of persons regarding this permit application and to address potential or existing environmental justice areas, the affected communities must first be identified, informed about proposed environmental actions affecting the community, and invited to share their comments and concerns. The EJSCREEN tool developed by the U.S. Environmental Protection Agency (EPA) helps identify communities that are low income and minority populations that may benefit from a variety of approaches for notification and outreach communication.

The demographics below are based on an 8-mile wide rectangle that includes an 8-mile radius around the facility (circle on map) as well as a lower area of tailing ponds connected with the facility. The results of the EJScreen ACS Summary Report (attached) using the area of the rectangle are listed in the table below.

<b>Population and Income Data</b>			
Total Population:	5,769	Per capita income of community:	\$18,596
Minority Population, %:	70	US Per Capita Income*:	\$29,829
Total number of households:	2,256	Total Number (and Percent) of Linguistically Isolated Households:	92 (3.3%)

\*US Per Capita Income 2012-2016; <https://www.census.gov/quickfacts/fact/table/US/HSG030210>

<b>Population by Race, %</b>		<b>Population by Ability to Speak English, %</b>	
White	93	Speak Only English	62
Black	1	Non-English at Home	38
American Indian	1	Speak English "very well"	33
Asian	0	Speak English "well"	3
Pacific Islander	0	Speak English "not well"	2
Other Race	4	Speak English "not at all"	1
Two or More Races	1	Speak English "less than very well"	6

<b>Linguistically Isolated Household Details, %</b>	<b>List other Languages (if applicable)</b>
Speak Spanish	100 ////////////////////////////////////
Speak Other Indo-European Languages	0
Speak Asian Pacific Island Languages	0
Speak Other Languages	0

The EJScreen results for the 8-mile radius circle on the map are also attached to this PIP. Although the population numbers encompassed by the circle and rectangle are different, the demographics of the populations are similar in terms of percent minority population, percent of the population that speaks English less than very well, number of linguistically isolated households, and language spoken in linguistically isolated households.

In addition, the following community or stakeholder groups have been identified: no additional individuals or groups other than the specific entities listed in 4.e and 4.f.

History of public involvement in air permitting during the last 10 years: none.

It is important for the AQB to incorporate the linguistic and communication needs of this community when conducting public outreach and participation activities. To help accomplish this, the AQB will provide information in English, in public comment notices, public meeting notices (if applicable), and other announcements (radio broadcasts, brochures, signs, postcards, etc.) and strive to make public participation efforts as inclusive as possible within AQB budget and time limitations. The Silver City NMED field office will serve as access areas for the AQB to leave hard copies of important documents and information about how to comment on this permit application.

#### **4. Detailed actions and outreach activities the AQB Permitting Section will take to reach the affected public:**

##### **a. Overview**

Based on the demographics report discussed in the PIP, the history of public involvement at the facility and the facility background, basic information about public involvement opportunities will be in English. This information will include how to request materials in Spanish or to speak with AQB staff through an interpreter. Further details about public participation for this activity are outlined below.

**The AQB maintains information regarding this air quality permit application at the following locations:**

- i. On the Air Quality Bureau website, see Section 2.a above.**
- ii. At the District Office listed in Section 1.b above.**
- iii. At the main office location:**

New Mexico Environment Department  
Air Quality Bureau  
525 Camino de los Marquez, Suite 1  
Santa Fe, New Mexico, 87505

**b. Postal Mailing or E-Mailing of Notices to Persons on the Facility-Specific Mailing List**  
AQB regulations require notification to persons who have expressed interest in applications. The AQB maintains a mailing list that includes individuals interested in permit applications from particular facilities or geographic areas. Notifications may be sent through physical mail and/or an email.

The list also includes addresses within fifty kilometers of the boundary of other states, Bernalillo county, or a Class I area.

**c. Notices in the State Newspaper and Local Newspapers**

The public notice for this permit application will be published in English in the Legal Section of the Silver City Daily Press newspaper.

Websites for this publication is listed below

Silver City Daily Press:

English: <http://www.scdailypress.com/>

**d. Mailing to the Governor or President of Indian Tribes, Pueblos or Nations**

AQB regulations and the evaluation of the facility location and associated demographics, require notification to Tribes, Pueblos or Nations about this permit application for facilities located within a specified distance.

There are no Tribes, Pueblos and/or Nations within 10 miles of this facility.

**e. Affected Local, State, or Federal Government Agencies, and Active Land Grants**

AQB regulations require identifying and notifying local, state or federal government agencies about this permit application.

The following affected Local, State, or Federal Government Agencies will be notified by email: US EPA Region VI, USDA Gila National Forest

**f. Public Meeting Notices, Public Comment Notices, and Other Notices**

AQB may hold public meetings, open houses, stakeholder meetings, and/or a formal hearing depending on the interest in the application. Based on historical information and the results of the initial screening, there is no public meeting planned at this time for this permit application. If it is determined that a public meeting will be required, notice will be provided to the community as follows:

- 1) Via a newspaper of general circulation in the area closest to the location of the facility.
- 2) Locations commonly frequented by the general public, such as a nearby post office, public library, or city hall.
- 3) All persons and organizations that have expressed interest and are on a list maintained by AQB.
- 4) Via a public service announcement to at least one radio or television station which serves the municipality or county in which the source is or is proposed to be located.
- 5) The notices will be translated for non-English speaking participants, if required.
- 6) The notices will include information for requesting accommodations for those with disabilities as listed in item 2b above.

AQB will locate an appropriate venue based on the availability to the community to access the meeting, and the specific needs of the affected community (e.g. size of community, community locations, impacts, etc.).

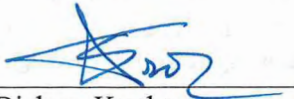
AQB may reschedule the meeting due to inclement weather. If rescheduled, AQB will provide as much advance notice as possible and reschedule for an appropriate time and date.

Meetings will be scheduled to make them as accessible and user-friendly as practical, considering work schedules, dinner hours and other community commitments. To the extent possible, the meeting will be held at a location that is local and convenient, and meet American with Disabilities Act (ADA) standards. In addition, whenever practical and appropriate, translators for limited-English speaking communities, or assistance for hearing-impaired individuals may be available. Information in public notices for a public meeting will adhere to AQB regulations, statutes and policies.

**g. Public Comment Periods**

AQB regulations require that all interested persons have thirty (30) days from the date the public notice is published to express an interest in writing in the permit application. If AQB receives written public comment before the end of the thirty (30) day public comment period, the analysis of the application will be made available for review for thirty (30) days on the Air Quality Bureau Website and at the NMED District office (address listed in Section 1.b above).

The PIP has been reviewed and approved by the AQB Bureau Chief.



*for*

Liz Bisbey-Kuehn  
Bureau Chief  
Air Quality Bureau

5/20/14  
Date approved

Attachments: EJSCREEN Printout



MICHELLE LUJAN GRISHAM  
GOVERNOR

HOWIE C. MORALES  
LT. GOVERNOR

New Mexico  
**ENVIRONMENT DEPARTMENT**

525 Camino de los Marquez, Suite 1  
Santa Fe, NM 87505-1816  
Phone (505) 476-4300  
Fax (505) 476-4375  
[www.env.nm.gov](http://www.env.nm.gov)



JAMES C. KENNEY  
CABINET SECRETARY

JENNIFER J. PRUETT  
DEPUTY SECRETARY

**Limited English Proficiency (LEP) Services Evaluation**

**Air Quality Bureau Air Permit Application**

Version P02.18.19

Date: February 19, 2019

Applicant: Freeport-McMoRan Chino Mines Company

Facility Name: Chino Mine

Air Quality Permit Application Number: 0298-M9

Location: 99 Santa Rita Mine Road, Vanadium, NM 88023; The facility is 3.89 miles northeast of Bayard, NM.

Latitude: 32.783594

Longitude: -108.069194

**Factor 1 – Number and Proportion of LEP Individuals in the Community:**

- A. Total Number that Speak English “less than very well”: 306 Proportion, 6%:
- B. Historical participation: The Bureau does not have records indicating any participation by LEP individuals or any member of the public regarding this facility.

**Factor 2 – Frequency with Which LEP Individuals Come in Contact with the Program (Frequent, Occasional, Not Frequent):**

There is no record of frequent or any contact with LEP individuals regarding this facility.

**Factor 3 – Nature and Importance of the Activity (Moderately Important, Important, Very Important):**

Important. Permits cannot be issued in accordance with 20.2.72 NMAC unless they demonstrate compliance with all state and federal regulations, including health-based New Mexico and National Ambient Air Quality Standards. This requirement protects the health of the residents in the vicinity of this facility.

Bureau regulations require that final action must be taken on this permit application no later than 90 days after the application has been ruled complete.

Cooper Mining constitutes a significant source of revenue for the State. Permitting facilities that are demonstrated to be in compliance with state and federal regulations encourages responsible economic development for New Mexico.

**Factor 4 – Resources Available to NMED and Associated Costs:**


- A. Costs associated with translation: \$300
  - Costs associated with providing a translator: \$1000-3000 depending on the length of the proceeding
  - Costs associated with hosting a public hearing: \$1500-3000

Costs for a court reporter: \$2000

- B. The Department is in the process of securing purchase agreements with translators to provide translating services. The Bureau currently uses in-house staff to assist Spanish speakers with their questions regarding permitting actions.

The Bureau has reviewed the above four factors. This action is a NSR permit revision to add a diesel engine which powers a Lime Slacker to spread lime into the water holder pond to increase the PH of the water. The engine will be limited to operate only 1500 hours per year. This project will extend the life of the impoundment damn and metal piping by maintaining a stable ph in the water. Given the importance of this project, the no involvement of LEP individuals or any member of the public regarding this facility in the past, and considering the current public notice already contains a paragraph in Spanish regarding how to speak with someone in the Bureau about the proposed project, the Bureau does plan to provide additional LEP services regarding this permitting action.

The LEP Services Evaluation has been reviewed and approved by the AQB Bureau Chief.

  
Liz Bisbey-Kuehn  
Bureau Chief  
Air Quality Bureau

5/20/19  
Date approved



Location: User-specified point center at 32.783594, -108.069194  
 Ring (buffer): 8-mile radius  
 Description: Chino Mine-8 mile

Summary of ACS Estimates		2012 - 2016
Population		8,137
Population Density (per sq. mile)		39
Minority Population		5,458
% Minority		67%
Households		3,275
Housing Units		4,118
Housing Units Built Before 1950		1,173
Per Capita Income		24,674
Land Area (sq. miles) (Source: SF1)		211.17
% Land Area		100%
Water Area (sq. miles) (Source: SF1)		0.35
% Water Area		0%

	2012 - 2016 ACS Estimates	Percent	MOE (±)
<b>Population by Race</b>			
Total	8,137	100%	530
Population Reporting One Race	8,016	99%	809
White	7,519	92%	525
Black	71	1%	73
American Indian	95	1%	72
Asian	36	0%	52
Pacific Islander	0	0%	11
Some Other Race	294	4%	76
Population Reporting Two or More Races	121	1%	106
Total Hispanic Population	5,190	64%	407
Total Non-Hispanic Population	2,946		
White Alone	2,678	33%	398
Black Alone	67	1%	73
American Indian Alone	84	1%	72
Non-Hispanic Asian Alone	15	0%	29
Pacific Islander Alone	0	0%	11
Other Race Alone	12	0%	20
Two or More Races Alone	90	1%	106
<b>Population by Sex</b>			
Male	3,949	49%	324
Female	4,187	51%	275
<b>Population by Age</b>			
Age 0-4	467	6%	95
Age 0-17	1,871	23%	175
Age 18+	6,266	77%	369
Age 65+	2,186	27%	194

**Data Note:** Detail may not sum to totals due to rounding. Hispanic population can be of any race.  
 N/A means not available. Source: U.S. Census Bureau, American Community Survey (ACS) 2012 - 2016.

Location: User-specified point center at 32.783594, -108.069194

Ring (buffer): 8-mile radius

Description: Chino Mine-8 mile

	2012 - 2016 ACS Estimates	Percent	MOE (±)
<b>Population 25+ by Educational Attainment</b>			
Total	5,780	100%	438
Less than 9th Grade	485	8%	76
9th - 12th Grade, No Diploma	513	9%	74
High School Graduate	1,817	31%	164
Some College, No Degree	1,960	34%	276
Associate Degree	424	7%	160
Bachelor's Degree or more	1,005	17%	207
<b>Population Age 5+ Years by Ability to Speak English</b>			
Total	7,670	100%	529
Speak only English	4,776	62%	400
Non-English at Home <sup>1+2+3+4</sup>	2,894	38%	249
<sup>1</sup> Speak English "very well"	2,505	33%	244
<sup>2</sup> Speak English "well"	245	3%	56
<sup>3</sup> Speak English "not well"	114	1%	46
<sup>4</sup> Speak English "not at all"	29	0%	19
<sup>3+4</sup> Speak English "less than well"	143	2%	47
<sup>2+3+4</sup> Speak English "less than very well"	389	5%	73
<b>Linguistically Isolated Households*</b>			
Total	125	100%	28
Speak Spanish	125	100%	26
Speak Other Indo-European Languages	0	0%	11
Speak Asian-Pacific Island Languages	0	0%	11
Speak Other Languages	0	0%	11
<b>Households by Household Income</b>			
Household Income Base	3,275	100%	168
< \$15,000	556	17%	66
\$15,000 - \$25,000	596	18%	120
\$25,000 - \$50,000	1,107	34%	141
\$50,000 - \$75,000	499	15%	115
\$75,000 +	516	16%	143
<b>Occupied Housing Units by Tenure</b>			
Total	3,275	100%	168
Owner Occupied	2,627	80%	176
Renter Occupied	648	20%	107
<b>Employed Population Age 16+ Years</b>			
Total	6,420	100%	466
In Labor Force	3,004	47%	326
Civilian Unemployed in Labor Force	444	7%	88
Not In Labor Force	3,416	53%	312

**Data Note:** Detail may not sum to totals due to rounding. Hispanic population can be of any race.

N/A means not available. Source: U.S. Census Bureau, American Community Survey (ACS)

\*Households in which no one 14 and over speaks English "very well" or speaks English only.

Location: User-specified point center at 32.783594, -108.069194

Ring (buffer): 8-mile radius

Description: Chino Mine-8 mile

	2012 - 2016 ACS Estimates	Percent	MOE (±)
<b>Population by Language Spoken at Home*</b>			
Total (persons age 5 and above)	5,417	100%	350
English	3,350	62%	305
Spanish	2,008	37%	187
French	0	0%	11
French Creole	N/A	N/A	N/A
Italian	N/A	N/A	N/A
Portuguese	N/A	N/A	N/A
German	0	0%	11
Yiddish	N/A	N/A	N/A
Other West Germanic	N/A	N/A	N/A
Scandinavian	N/A	N/A	N/A
Greek	N/A	N/A	N/A
Russian	N/A	N/A	N/A
Polish	N/A	N/A	N/A
Serbo-Croatian	N/A	N/A	N/A
Other Slavic	N/A	N/A	N/A
Armenian	N/A	N/A	N/A
Persian	N/A	N/A	N/A
Gujarathi	N/A	N/A	N/A
Hindi	N/A	N/A	N/A
Urdu	N/A	N/A	N/A
Other Indic	N/A	N/A	N/A
Other Indo-European	0	0%	11
Chinese	0	0%	11
Japanese	N/A	N/A	N/A
Korean	0	0%	11
Mon-Khmer, Cambodian	N/A	N/A	N/A
Hmong	N/A	N/A	N/A
Thai	N/A	N/A	N/A
Laotian	N/A	N/A	N/A
Vietnamese	0	0%	11
Other Asian	0	0%	11
Tagalog	0	0%	11
Other Pacific Island	N/A	N/A	N/A
Navajo	N/A	N/A	N/A
Other Native American	N/A	N/A	N/A
Hungarian	N/A	N/A	N/A
Arabic	0	0%	11
Hebrew	N/A	N/A	N/A
African	N/A	N/A	N/A
Other and non-specified	59	1%	50
Total Non-English	2,067	38%	459

**Data Note:** Detail may not sum to totals due to rounding. Hispanic population can be of any race.

N/A means not available. Source: U.S. Census Bureau, American Community Survey (ACS) 2012 - 2016.

\*Population by Language Spoken at Home is available at the census tract summary level and up.

Location: User-specified polygonal location  
 Ring (buffer): 0-mile radius  
 Description: Chine Mine-rectangle

Summary of ACS Estimates		2012 - 2016
Population		5,769
Population Density (per sq. mile)		232
Minority Population		4,024
% Minority		70%
Households		2,256
Housing Units		2,802
Housing Units Built Before 1950		835
Per Capita Income		18,596
Land Area (sq. miles) (Source: SF1)		24.86
% Land Area		100%
Water Area (sq. miles) (Source: SF1)		0.07
% Water Area		0%

	2012 - 2016 ACS Estimates	Percent	MOE (±)
<b>Population by Race</b>			
Total	5,769	100%	381
Population Reporting One Race	5,688	99%	628
White	5,343	93%	368
Black	67	1%	74
American Indian	71	1%	49
Asian	0	0%	11
Pacific Islander	0	0%	11
Some Other Race	207	4%	115
Population Reporting Two or More Races	81	1%	106
Total Hispanic Population	3,835	66%	358
Total Non-Hispanic Population	1,934		
White Alone	1,745	30%	225
Black Alone	63	1%	73
American Indian Alone	60	1%	48
Non-Hispanic Asian Alone	0	0%	11
Pacific Islander Alone	0	0%	11
Other Race Alone	8	0%	20
Two or More Races Alone	57	1%	106
<b>Population by Sex</b>			
Male	2,805	49%	268
Female	2,964	51%	208
<b>Population by Age</b>			
Age 0-4	352	6%	99
Age 0-17	1,405	24%	185
Age 18+	4,364	76%	274
Age 65+	1,469	25%	155

**Data Note:** Detail may not sum to totals due to rounding. Hispanic population can be of any race.  
 N/A means not available. Source: U.S. Census Bureau, American Community Survey (ACS) 2012 - 2016.

Location: User-specified polygonal location  
 Ring (buffer): 0-mile radius  
 Description: Chine Mine-rectangle

	2012 - 2016 ACS Estimates	Percent	MOE (±)
<b>Population 25+ by Educational Attainment</b>			
Total	4,049	100%	236
Less than 9th Grade	381	9%	70
9th - 12th Grade, No Diploma	402	10%	92
High School Graduate	1,267	31%	143
Some College, No Degree	1,327	33%	154
Associate Degree	313	8%	72
Bachelor's Degree or more	671	17%	122
<b>Population Age 5+ Years by Ability to Speak English</b>			
Total	5,417	100%	350
Speak only English	3,350	62%	293
Non-English at Home <sup>1+2+3+4</sup>	2,067	38%	205
<sup>1</sup> Speak English "very well"	1,761	33%	201
<sup>2</sup> Speak English "well"	187	3%	59
<sup>3</sup> Speak English "not well"	92	2%	44
<sup>4</sup> Speak English "not at all"	27	1%	26
<sup>3+4</sup> Speak English "less than well"	119	2%	50
<sup>2+3+4</sup> Speak English "less than very well"	306	6%	67
<b>Linguistically Isolated Households*</b>			
Total	92	100%	40
Speak Spanish	92	100%	38
Speak Other Indo-European Languages	0	0%	11
Speak Asian-Pacific Island Languages	0	0%	11
Speak Other Languages	0	0%	11
<b>Households by Household Income</b>			
Household Income Base	2,256	100%	130
< \$15,000	385	17%	80
\$15,000 - \$25,000	419	19%	98
\$25,000 - \$50,000	778	34%	119
\$50,000 - \$75,000	308	14%	78
\$75,000 +	366	16%	82
<b>Occupied Housing Units by Tenure</b>			
Total	2,256	100%	130
Owner Occupied	1,757	78%	116
Renter Occupied	499	22%	95
<b>Employed Population Age 16+ Years</b>			
Total	4,487	100%	257
In Labor Force	2,193	49%	196
Civilian Unemployed in Labor Force	327	7%	118
Not In Labor Force	2,293	51%	206

**Data Note:** Detail may not sum to totals due to rounding. Hispanic population can be of any race.

N/A means not available. Source: U.S. Census Bureau, American Community Survey (ACS)

\*Households in which no one 14 and over speaks English "very well" or speaks English only.

Location: User-specified polygonal location

Ring (buffer): 0-mile radius

Description: Chine Mine-rectangle

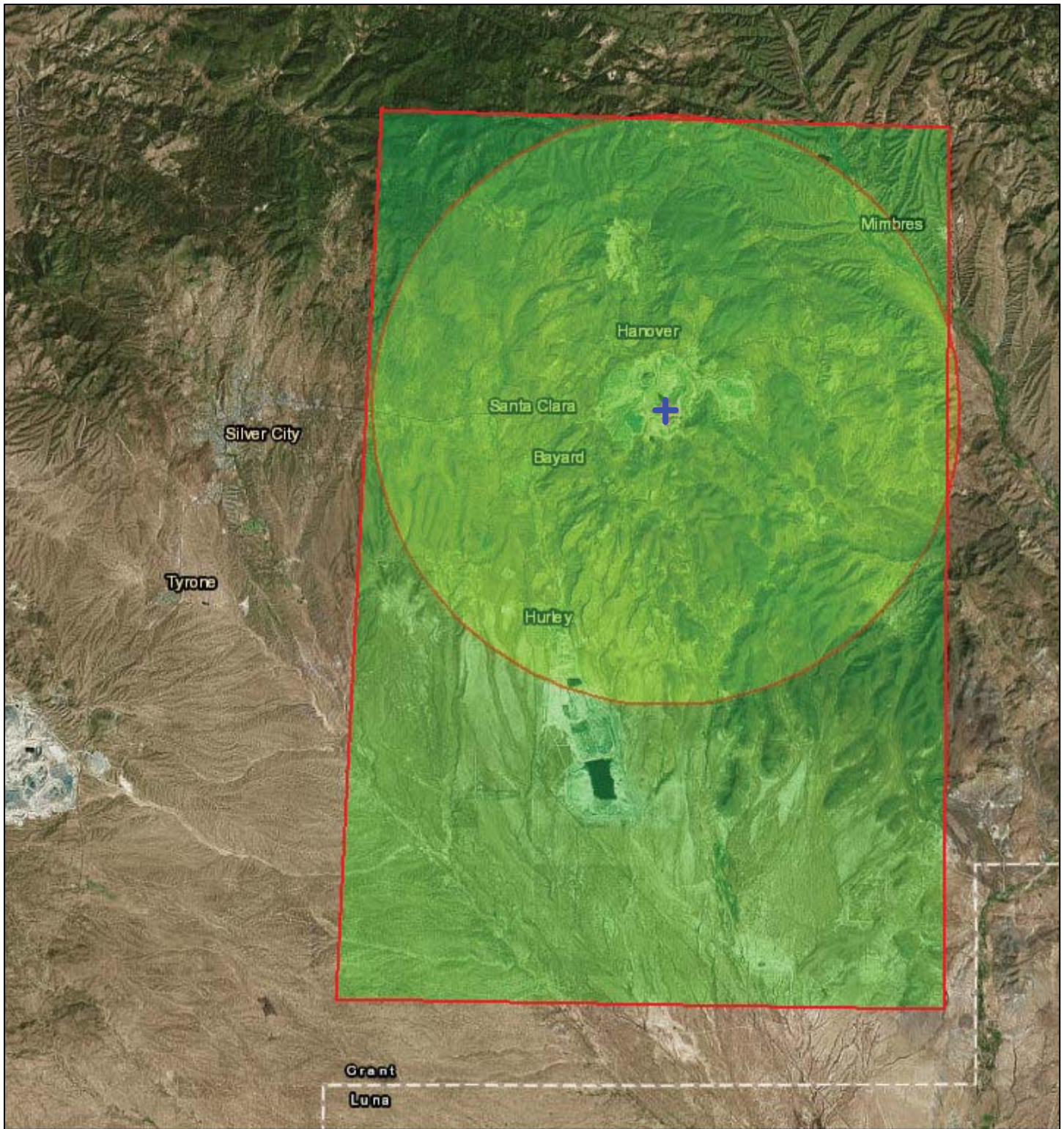
	2012 - 2016 ACS Estimates	Percent	MOE (±)
<b>Population by Language Spoken at Home*</b>			
Total (persons age 5 and above)	5,417	100%	350
English	3,350	62%	305
Spanish	2,008	37%	187
French	0	0%	11
French Creole	N/A	N/A	N/A
Italian	N/A	N/A	N/A
Portuguese	N/A	N/A	N/A
German	0	0%	11
Yiddish	N/A	N/A	N/A
Other West Germanic	N/A	N/A	N/A
Scandinavian	N/A	N/A	N/A
Greek	N/A	N/A	N/A
Russian	N/A	N/A	N/A
Polish	N/A	N/A	N/A
Serbo-Croatian	N/A	N/A	N/A
Other Slavic	N/A	N/A	N/A
Armenian	N/A	N/A	N/A
Persian	N/A	N/A	N/A
Gujarathi	N/A	N/A	N/A
Hindi	N/A	N/A	N/A
Urdu	N/A	N/A	N/A
Other Indic	N/A	N/A	N/A
Other Indo-European	0	0%	11
Chinese	0	0%	11
Japanese	N/A	N/A	N/A
Korean	0	0%	11
Mon-Khmer, Cambodian	N/A	N/A	N/A
Hmong	N/A	N/A	N/A
Thai	N/A	N/A	N/A
Laotian	N/A	N/A	N/A
Vietnamese	0	0%	11
Other Asian	0	0%	11
Tagalog	0	0%	11
Other Pacific Island	N/A	N/A	N/A
Navajo	N/A	N/A	N/A
Other Native American	N/A	N/A	N/A
Hungarian	N/A	N/A	N/A
Arabic	0	0%	11
Hebrew	N/A	N/A	N/A
African	N/A	N/A	N/A
Other and non-specified	59	1%	50
Total Non-English	2,067	38%	459

**Data Note:** Detail may not sum to totals due to rounding. Hispanic population can be of any race.

N/A means not available. Source: U.S. Census Bureau, American Community Survey (ACS) 2012 - 2016.


\*Population by Language Spoken at Home is available at the census tract summary level and up.

# Chino Mine-rect-map



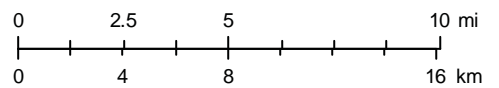
October 26, 2018

1:288,895

 Digitized Polygon

 Buffer Area

 Digitized Point



Esri, HERE, Garmin, © OpenStreetMap contributors, and the GIS user community  
Source: Esri, DigitalGlobe, GeoEye, Earthstar Geographics, CNES/Airbus DS, USDA, USGS, AeroGRID, IGN, and the GIS User Community