

260

PED GM Bus No. 260

VIN 4DRBUAAN87B472762

**MANUFACTURED BY
IC CORPORATION**

DATE OF MANUFACTURE 07 MO. 06 YR.

GVWR 13,517 KGS (29,800 LBS)

GAWR FRONT 4,536 KGS (10,000 LBS) WITH

**265/75R22.5G TIRES 14 PLY AT
758 KPa (110 PSI) COLD
RIMS 22.5X7.50 AXLE SINGLE**

GAWR REAR 8,981 KGS (19,800 LBS) WITH

**10R22.5 G TIRES 14 PLY AT
723 KPa (105 PSI) COLD
RIMS 22.5X7.50 AXLE DUAL**

**THIS VEHICLE CONFORMS TO ALL
APPLICABLE FEDERAL MOTOR
VEHICLE SAFETY STANDARDS IN
EFFECT ON THE DATE OF
MANUFACTURE SHOWN ABOVE.**

VEHICLE IDENTIFICATION NO.

4DRBUAAN87B472762

VEHICLE TYPE

SCHOOL BUS # 472762

GM
Goodwrench Service Plus

DATE

FLUID LEVELS CHECKED

TRANS- MISSION	
AXLE	
POWER STEERING	
THE MASTER CYLINDER	
ENGINE COOLANT	
BATTERY	
OIL CHANGED	3185
LUBRICATION SERVICES	
AIR FILTER REPLACED	104269091
CLEANER REPLACED	HF 25707
WAX FILTER REPLACED	104269098
A/C SYSTEM SERVICED	
TIRES ROTATED	
WHEEL BEARINGS	
ENGINE TUNE-UP	
CONDITION SERVICE	
WHEEL ALIGNMENT	
TRANS. FLUID CHANGED	

RICO AUTO COMPLEX
220 S. 5th. St.
Gallup, NM 87301
505-722-2271



THIS DIESEL ENGINE
FUEL AND MEETS OR
EXCEEDS ALL
EMISSIONS REQUIREMENTS
AND MODEL YEAR.
ENGINE MODEL:
DT 466 L57
EPA/04
YEAR MODEL: **2007**

**THIS VEHICLE CONFORMS TO A
APPLICABLE FEDERAL MOTOR
VEHICLE SAFETY STANDARDS
EFFECT ON THE DATE OF
MANUFACTURE SHOWN ABOVE.**

VEHICLE IDENTIFICATION NO.

4DRBUAAN87B472762

VEHICLE TYPE

SCHOOL BUS # 472762







262

PED GM Bus No. 262
VIN 1BAKGCKA25F227975

MANUFACTURED BY

BLUE BIRD BODY COMPANY

DATE OF MFR. 08/04

SUITABLE TIRE - RIM CHOICE

GVWR : 13612 KG (30000 LB)

GAWR : FRONT 4537 KG (10000 LB) WITH 11RX22.5G TIRES
8.25X22.5 RIMS. AT 723 KPA (105 PSI), COLD SINGLE

GAWR : REAR 9528 KG (21000 LB) WITH 11RX22.5G TIRES
8.25X22.5 RIMS. AT 723 KPA (105 PSI), COLD DUAL

THIS VEHICLE CONFORMS TO ALL APPLICABLE U.S.
FEDERAL MOTOR VEHICLE SAFETY STANDARDS IN
EFFECT ON THE DATE OF MANUFACTURE SHOWN ABOVE

V.I.N. 1BAKGCKA25F227975 TYPE CLASSIFICATION SCHOOL BUS

(21000 LB) WITH
8.25X22.5 RIMS. AT 723 KPA (105

THIS VEHICLE CONFORMS TO ALL APPLICABLE
FEDERAL MOTOR VEHICLE SAFETY STANDARDS IN
EFFECT ON THE DATE OF MANUFACTURE SHOWN ABOVE

V.I.N. 1BAKGCKA25F227975 TYPE CLASSIFICATION SC



C

12A0

12 ft
1
ft
in
2
3
4
5

STANLEY
Life Guard

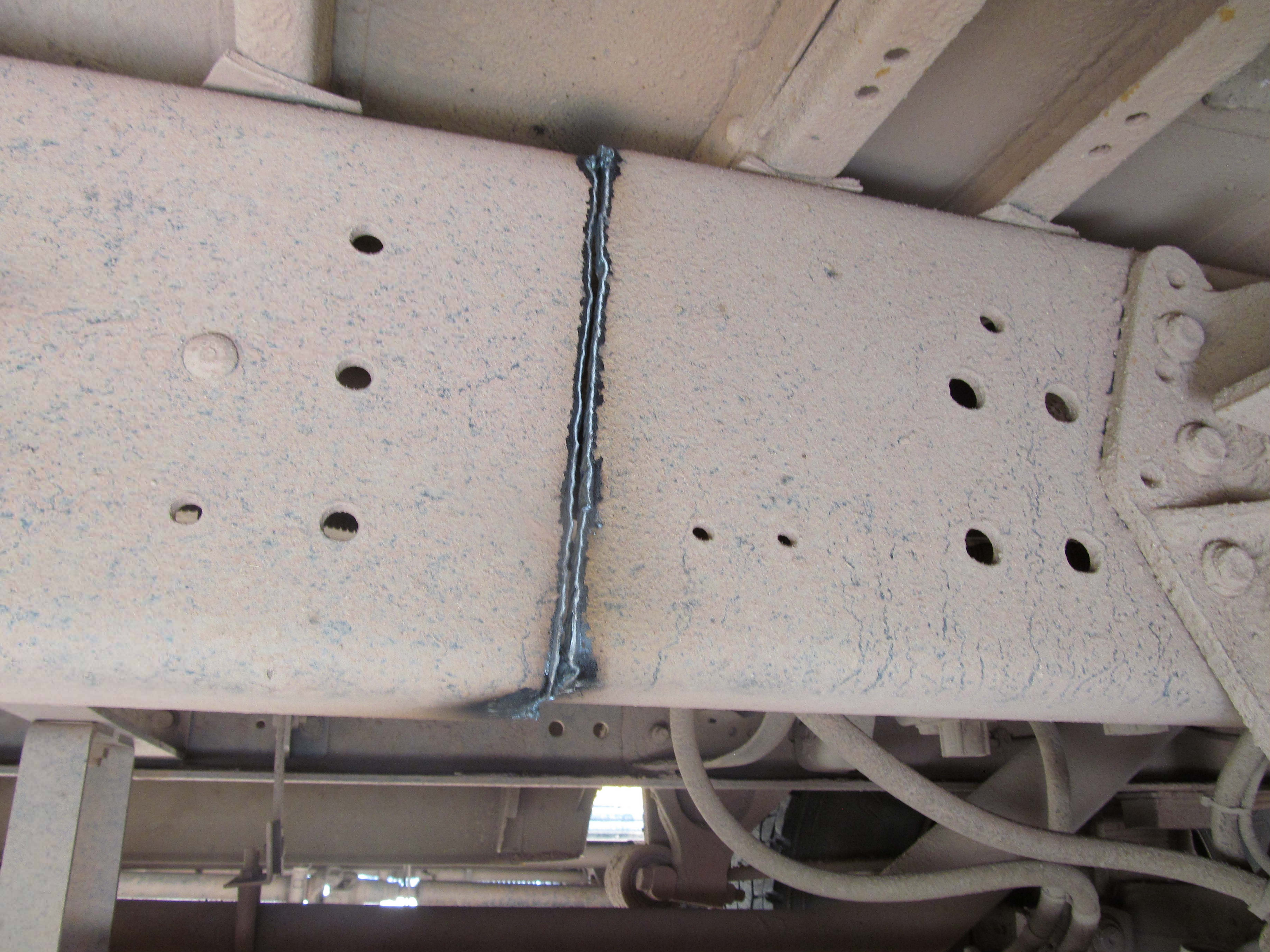


3 4 5 6 7 8 9 10 11 12
PR. APPD
NO. 339 TC
MADE IN U.S.A.



262







262





PED GM Bus No. 263 VIN 4DRBUAANX7B516955

263

WARNING
USE CROSS VIEW MIRRORS TO VIEW PED
WHILE BUS IS STOPPED.
DO NOT USE THESE MIRRORS TO VIEW TR
WHILE BUS IS MOVING.
IMAGES IN THESE MIRRORS DO NOT ACC
SHOW ANOTHER VEHICLES LOCATION.
BUS BOY®
MIRRO-LITE COMPANY
P.O. Box 258 • Rockwood, Michigan 48173 • Telephone (313) 379-9828

Property Of
Gallup-McKinley County Schools
113509

MANUFACTURED BY
IC CORPORATION
DATE OF MANUFACTURE 08 MO. 06 Y
GVWR 13,517 KGS (29,800 LBS)
GAWR FRONT 4,536 KGS (10,000 LBS)
265/75R22.5G TIRES 14 PLY AT
758 KPa (110 PSI) COLD
RIMS 22.5X7.50 AXLE SINGLE
GAWR REAR 8,981 KGS (19,800 LBS) WITH
10R22.5 G TIRES 14 PLY AT
723 KPa (105 PSI) COLD
RIMS 22.5X7.50 AXLE DUAL
**THIS VEHICLE CONFORMS TO ALL
APPLICABLE FEDERAL MOTOR
VEHICLE SAFETY STANDARDS IN
EFFECT ON THE DATE OF
MANUFACTURE SHOWN ABOVE.**
VEHICLE IDENTIFICATION NO.
4DRBUAANX7B516955
VEHICLE TYPE
SCHOOL BUS # 516955

WARNING
THIS VEHICLE IS EQUIPPED WITH A BACK-UP ALARM.
ALARM MUST SOUND!
WHEN OPERATING THIS VEHICLE IN REVERSE.
FAILURE TO MAINTAIN A CLEAR VIEW
IN THE DIRECTION OF TRAVEL

THIS VEHICLE CONFORMS TO ALL
APPLICABLE FEDERAL MOTOR
VEHICLE SAFETY STANDARDS IN
EFFECT ON THE DATE OF
MANUFACTURE SHOWN ABOVE.

VEHICLE IDENTIFICATION NO.

4DRBUAANX7B516955

VEHICLE TYPE

SCHOOL BUS # 516955

 **WARNING**

THIS VEHICLE IS EQUIPPED WITH A BACK-UP ALARM.

ALARM MUST SOUND!





1 INCH (25.4mm) PREMIUM

OP

263







263







PED GM Bus No. 264 VIN 1BAKGCKA45F227993

REAR

9528

KG

(21000

LB)

WITH

8.25X22.5 RIMS. AT 723 KPA (105

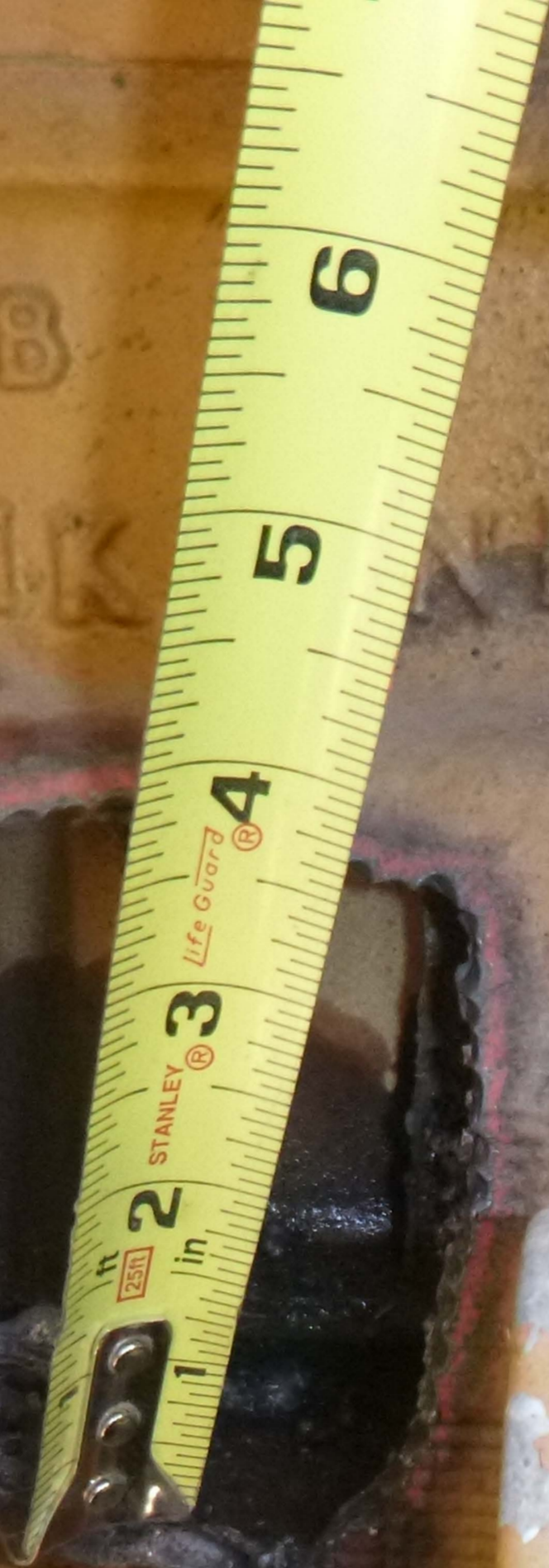
THIS VEHICLE CONFORMS TO ALL APPLICABLE
FEDERAL MOTOR VEHICLE SAFETY STANDARDS
EFFECT ON THE DATE OF MANUFACTURE SHOWN ABOVE

I.N. 1BAKGCKA45F227993 TYPE CLASSIFICATION S

BIMC
J 52

B

MK



09286





