



Rehoboth Bus No. 1
VIN 1HVBBABN6YH289247

~~AMERICAN TRANSPORTATION CORPORATION~~
MANUFACTURED BY
AMERICAN TRANSPORTATION CORPORATION

DATE OF MANUFACTURE 12 MO 99 YR.

INCOMPLETE VEHICLE MANUFACTURED BY:
NAVISTAR

DATE INC. VEH. MFD. 11 MO. 1999 YR.

GVWR 29,000 LBS

GAWR FRONT 10,000 LBS WITH

TIRES 265/75R32.5G PLY 12

PSI COLD 110

RIMS 22.5X7.50 AXLE SINGLE

GAWR REAR 19,000 LBS

TIRES 265/75R22.5G PLY 12

PSI COLD 100

RIMS 22.5X7.50 AXLE DUAL

THIS VEHICLE CONFORMS TO ALL
APPLICABLE FEDERAL MOTOR
VEHICLE SAFETY STANDARDS IN
EFFECT ON: 11 MO. 1999 YR.

VEHICLE IDENTIFICATION NO.

1HVBBA6N6YH289247

VEHICLE TYPE

SCHOOL BUS BODY# 927028

DO NOT

INTERFERE

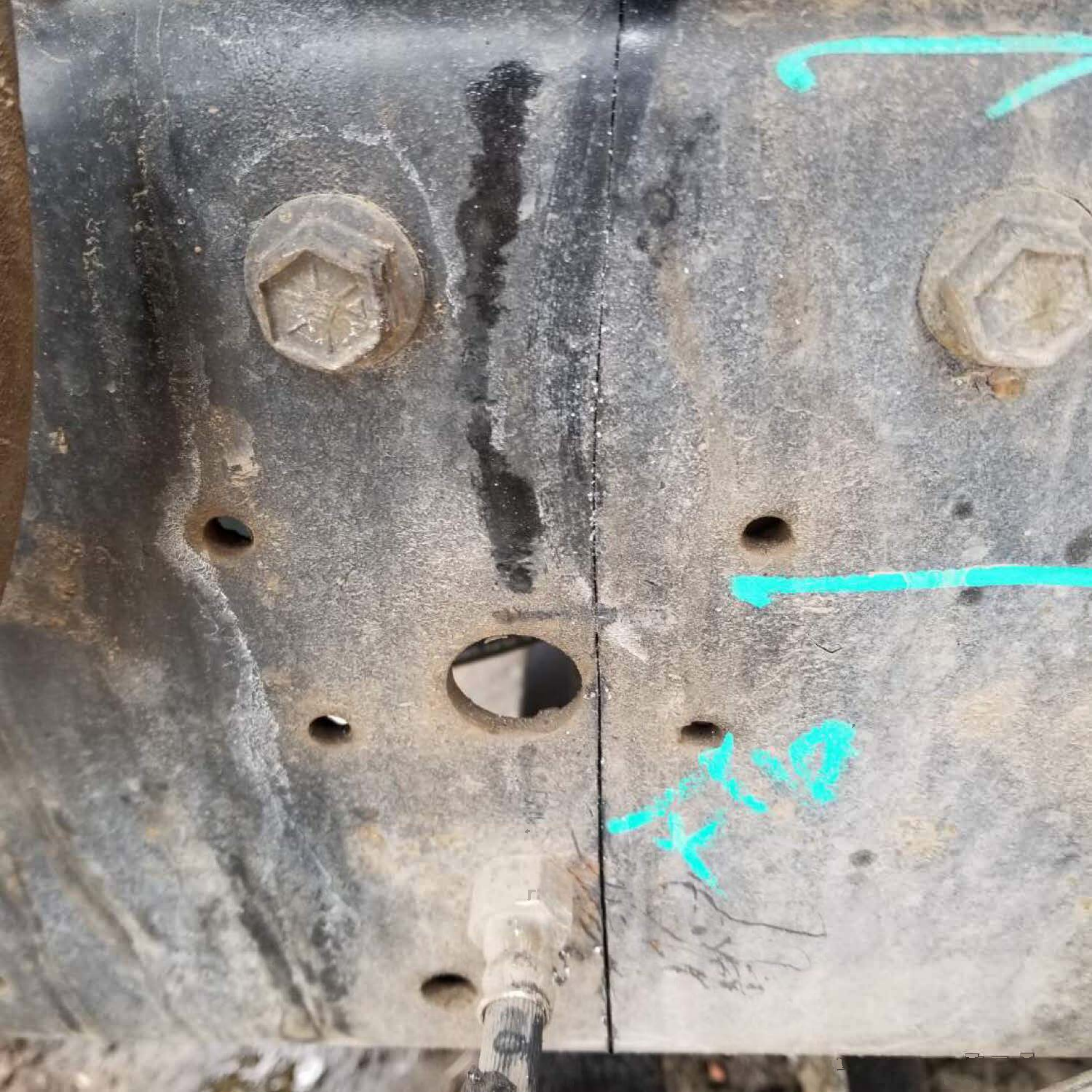
Campaign

VIN
Eng.#

Servicing

DO NOT







Rehoboth Bus No. 7
VIN 1HVBABP92B918748



**MANUFACTURED BY
AMERICAN TRANSPORTATION CORPORATION**

DATE OF MANUFACTURE 08 MO. 01 YR.

GVWR 13,154 KGS (29,000 LBS)

GAWR FRONT 4,536 KGS (10,000 LBS) WITH

**265/75R22.5G TIRES 12 PLY AT
758 KPa (110 PSI) COLD
RIMS 22.5X7.50 AXLE SINGLE**

GAWR REAR 8,618 KGS (19,000 LBS) WITH

**265/75R22.5G TIRES 12 PLY AT
689 KPa (100 PSI) COLD
RIMS 22.5X7.50 AXLE DUAL**

**THIS VEHICLE CONFORMS TO ALL
APPLICABLE FEDERAL MOTOR
VEHICLE SAFETY STANDARDS IN
EFFECT ON THE DATE OF
MANUFACTURE SHOWN ABOVE.**

VEHICLE IDENTIFICATION NO.

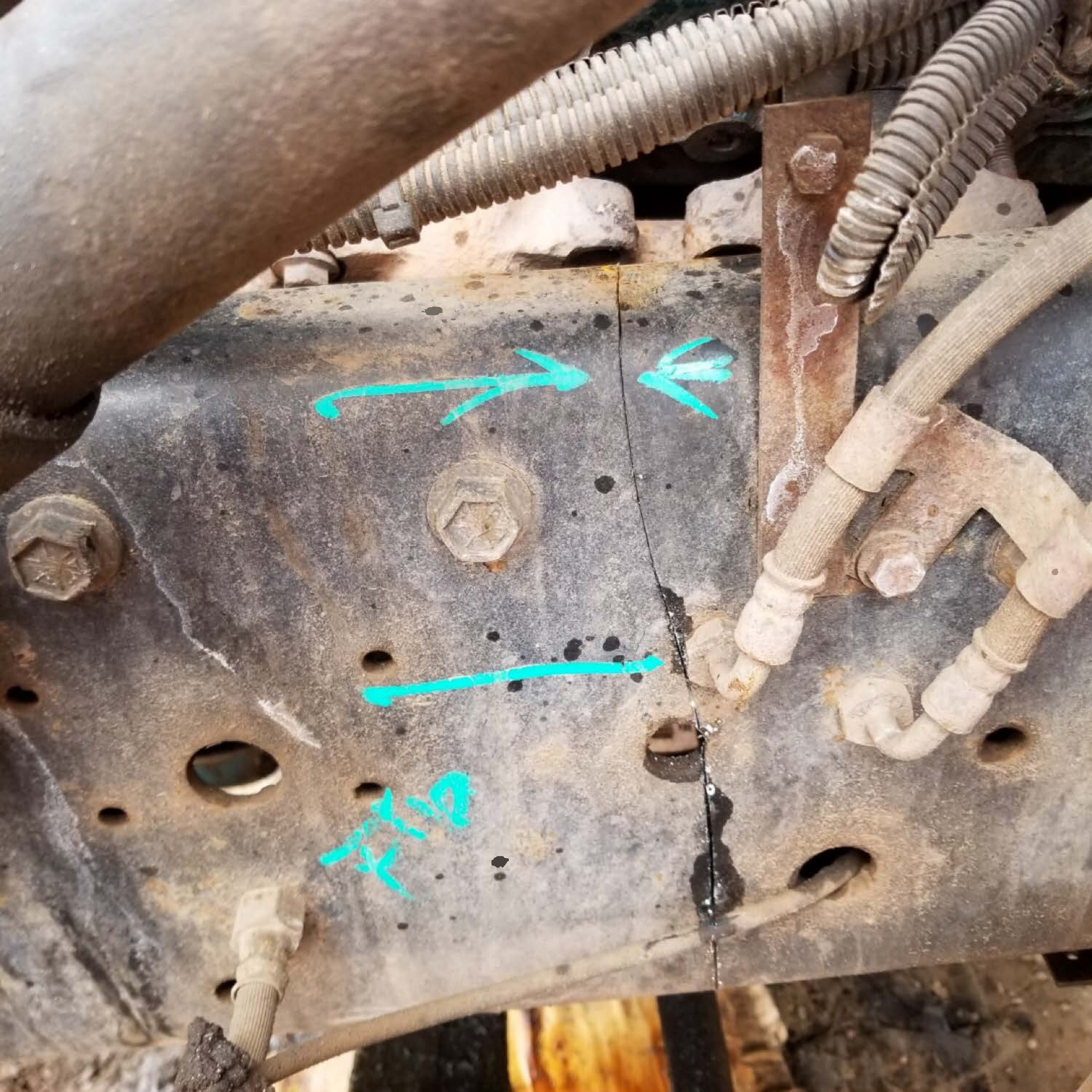
1HVBRA BP92B918748

VEHICLE TYPE

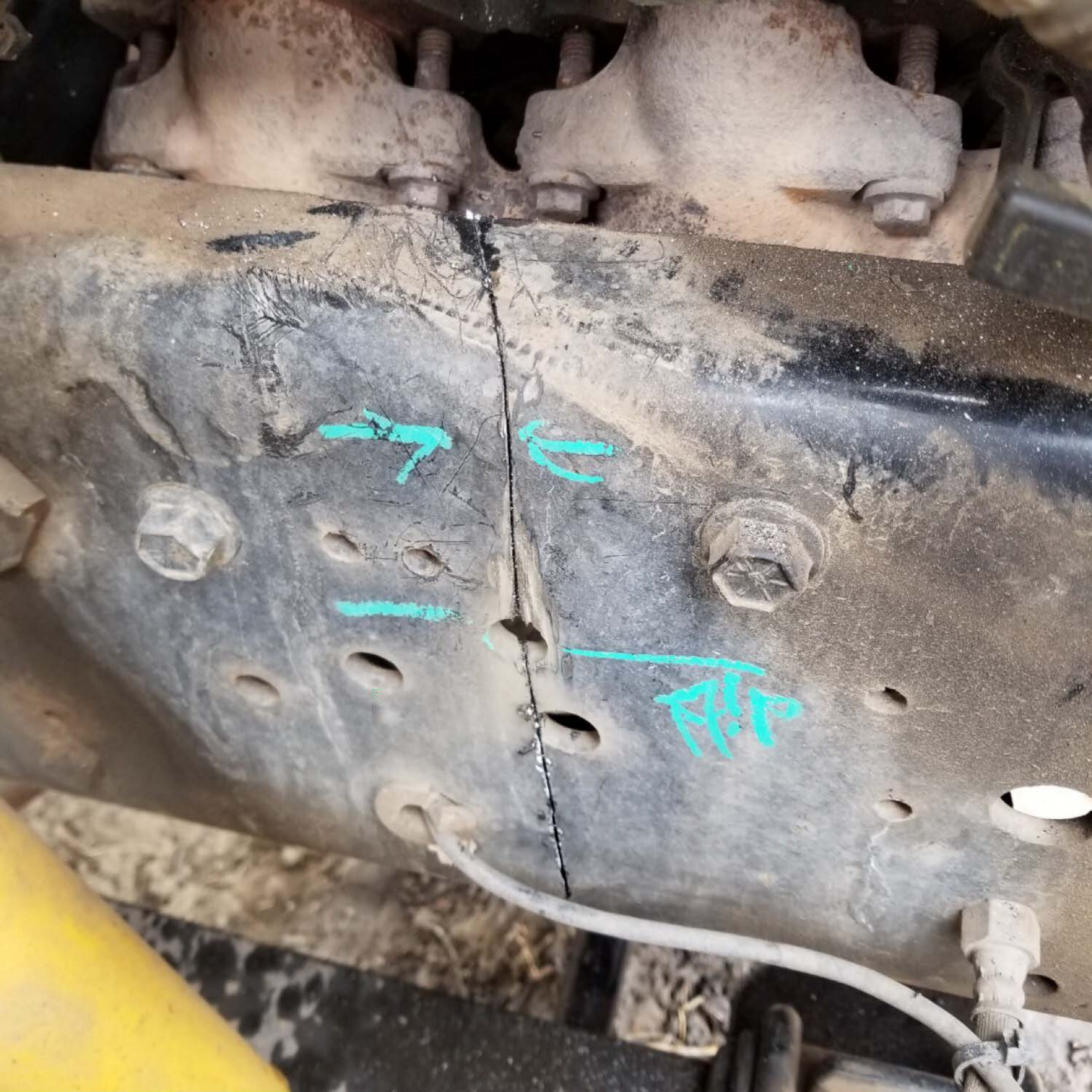
SCHOOL BUS BODY# 918748







GTX



A yellow school bus is shown from a front-quarter perspective with its hood open. The engine compartment is visible. The bus has a black bumper with the number '8L' in yellow. A black stop sign is mounted on the side. The bus is parked on a dirt lot with another bus visible in the background.

Rehoboth Bus No. 8
VIN
4UZABRDC77CW02549

8L



We Move People.

HIGH POINT, NORTH CAROLINA
MFD BY THOMAS BUILT BUSES INC.

FEDERAL ANNUAL INSPECTION

THIS VEHICLE HAS PASSED AN ANNUAL INSPECTION
CONDUCTED IN ACCORDANCE WITH 49 CFR, PART 396, FMCSR

MONTH

YEAR

Aug

20

0504148

VEHICLE ID (Company No.)

STATE/TAG NO. OR VIN

BUS # 8

4UZABRDC77CW02349

LOCATION OF RECORDS:

Company ReHobort Christian School

Street Address Bg # 41

City, State, Zip ReHobort NM 87322







