

**STATE OF NEW MEXICO
BEFORE THE WATER QUALITY CONTROL COMMISSION**

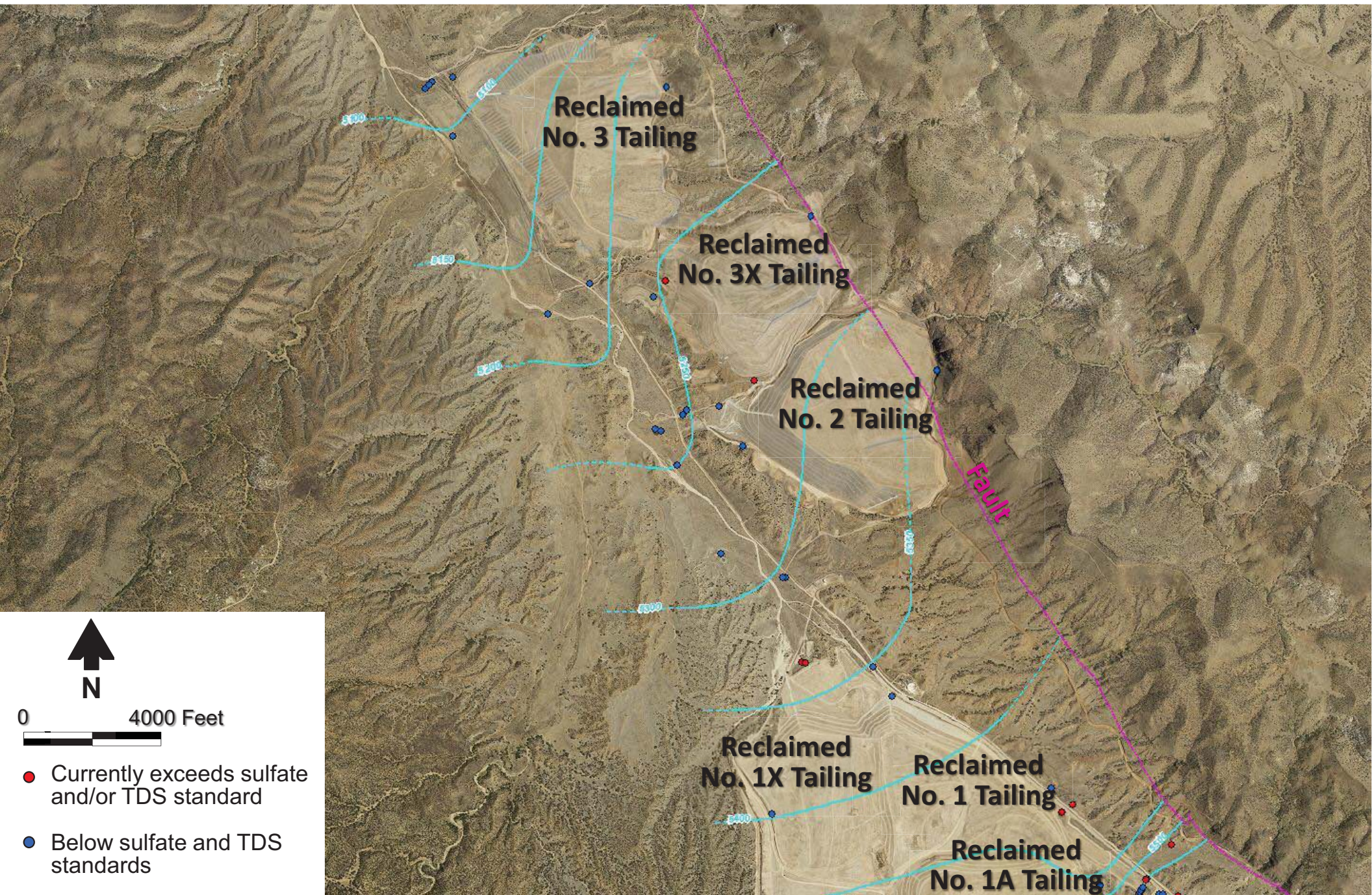
In the Matter of:

**PROPOSED AMENDMENT
TO 20.6.2 NMAC (Copper Rule)**

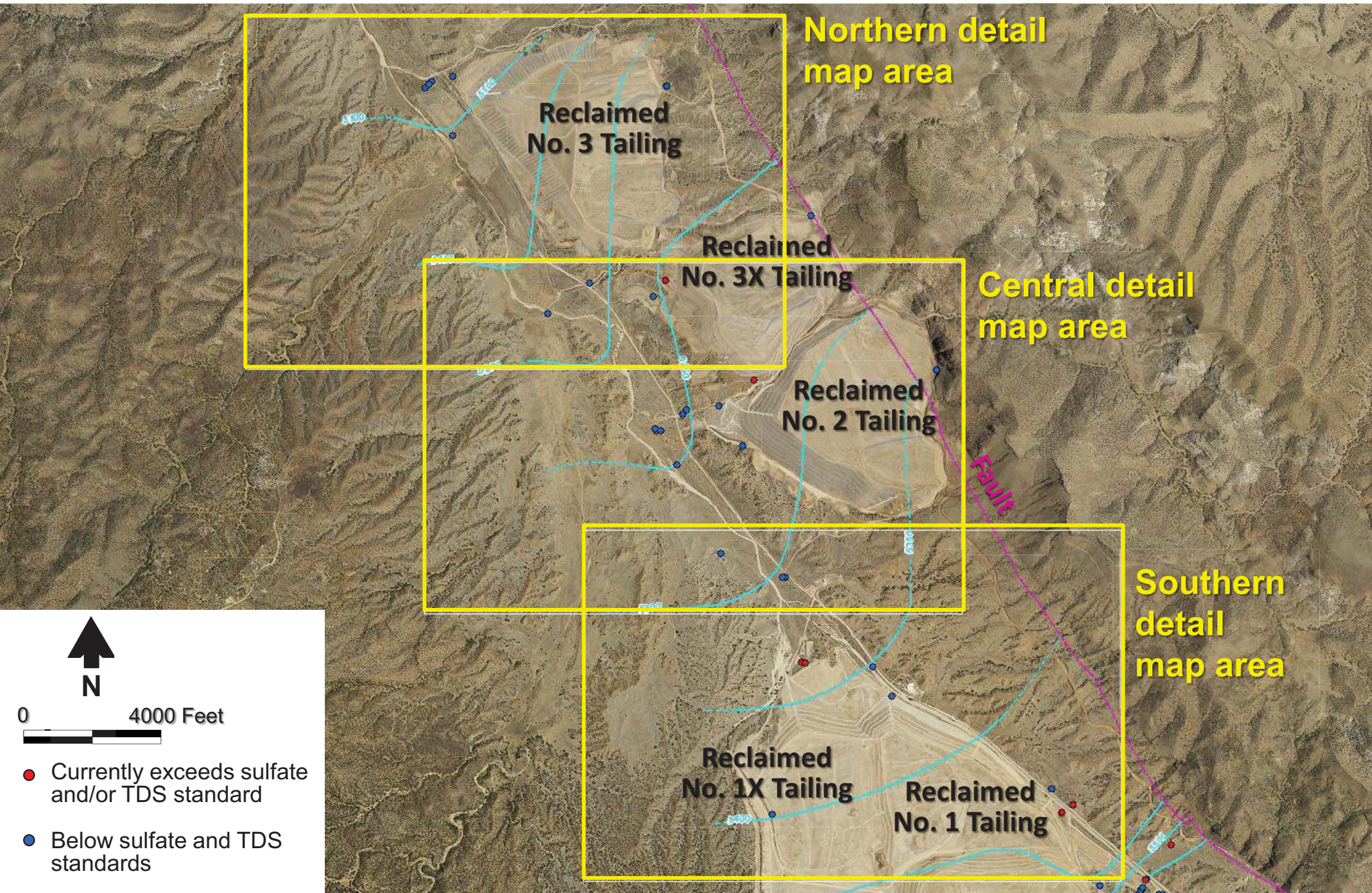
No. WQCC 12-01(R)

EXHIBIT BLANDFORD - 19

Tyrone Mine Tailing Area Water Quality

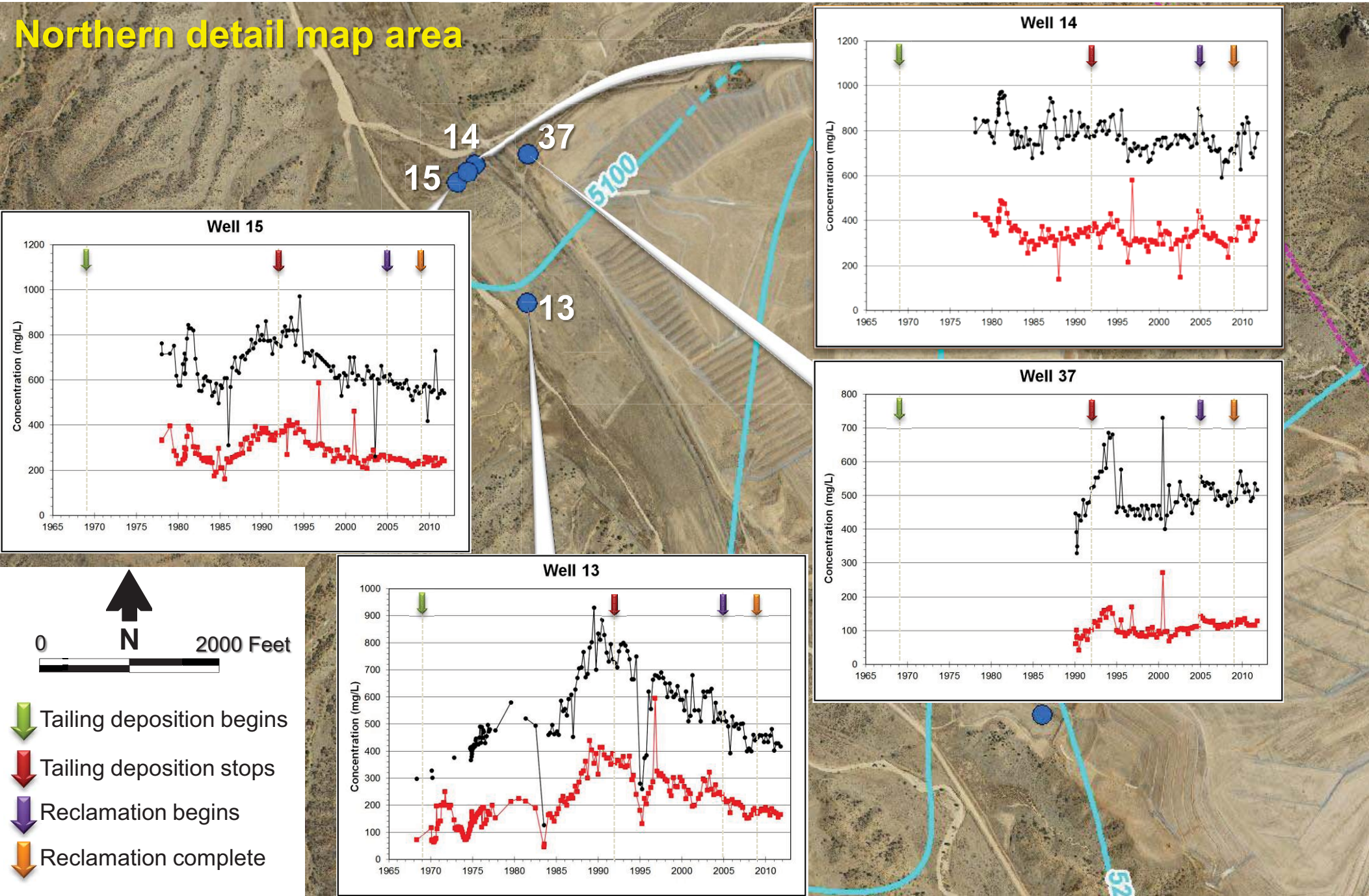


Tyrone Mine Tailing Area Water Quality



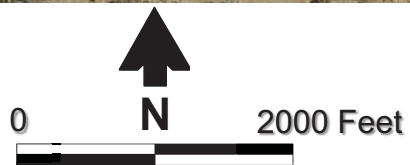
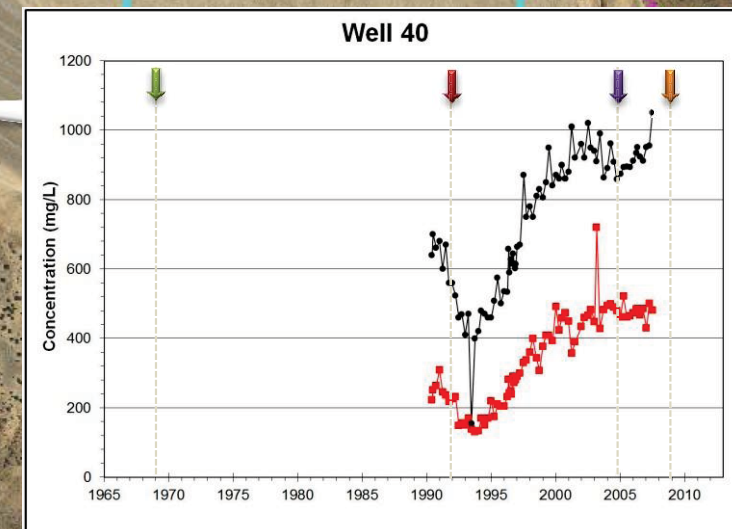
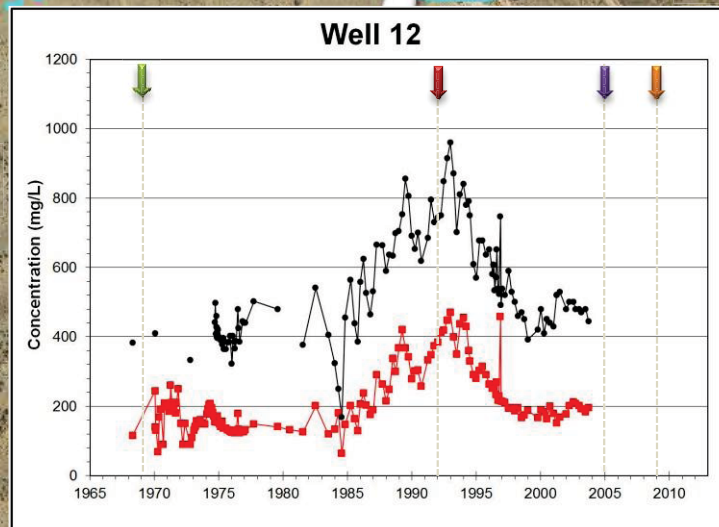
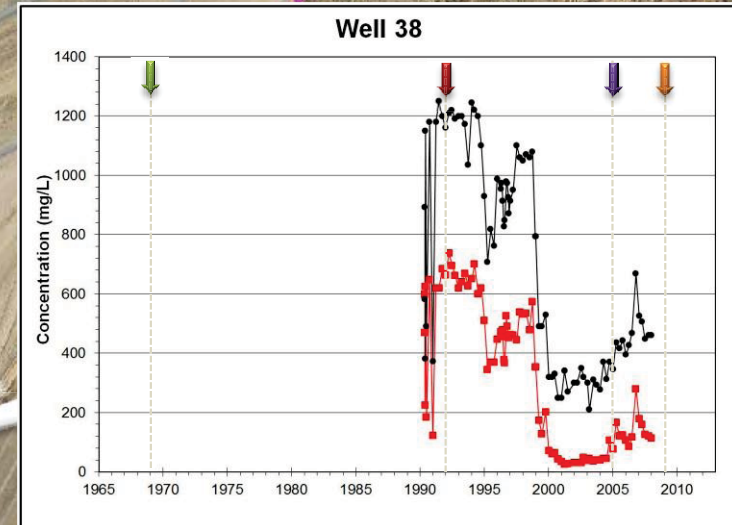
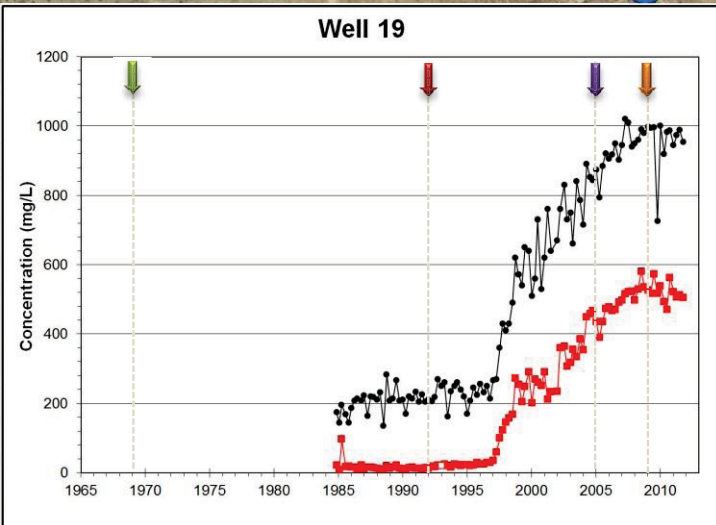
No. 3 Tailing Area

Northern detail map area



No. 3X and No. 2 Tailing Area

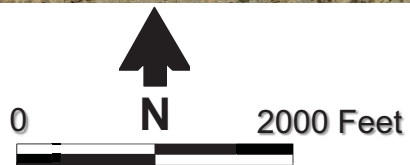
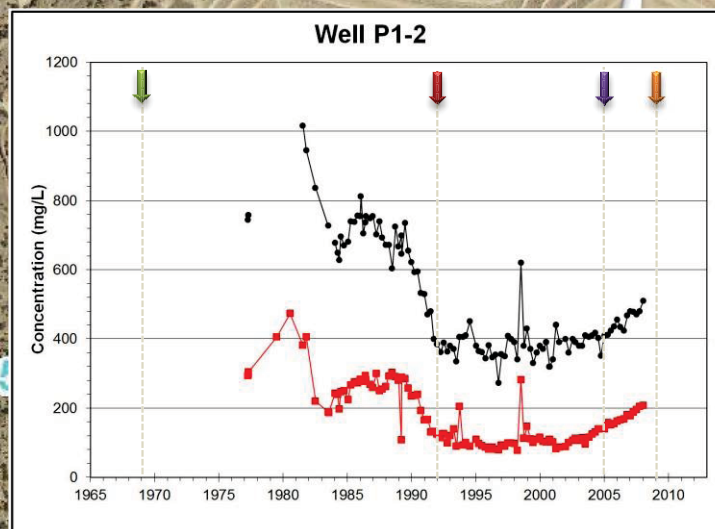
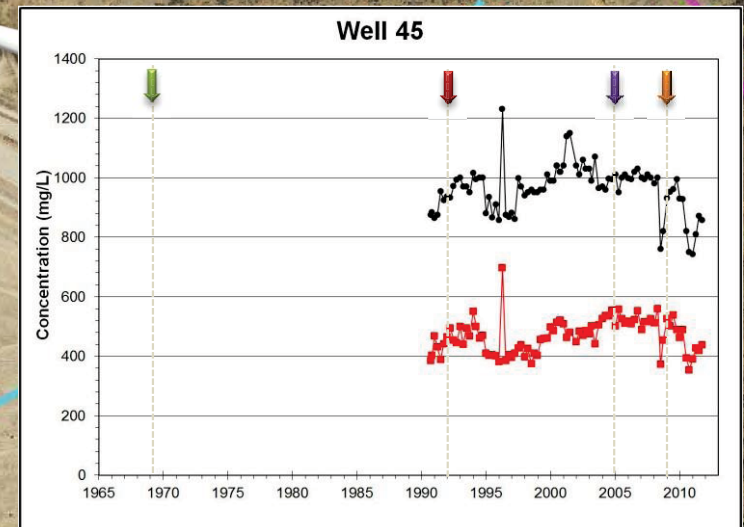
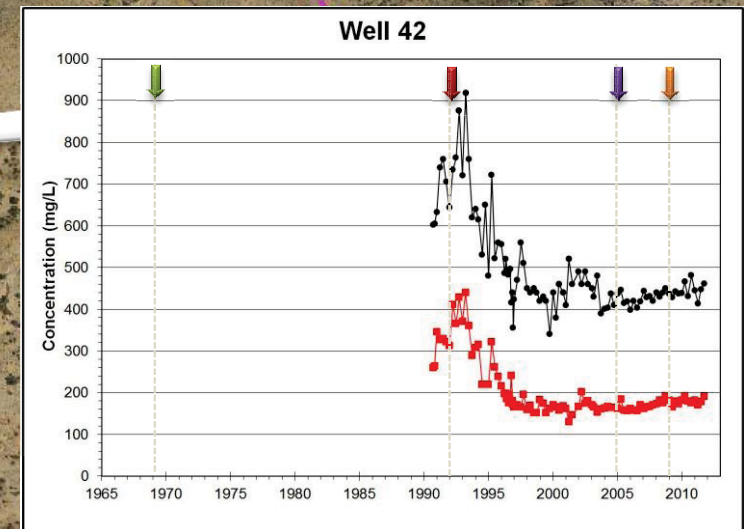
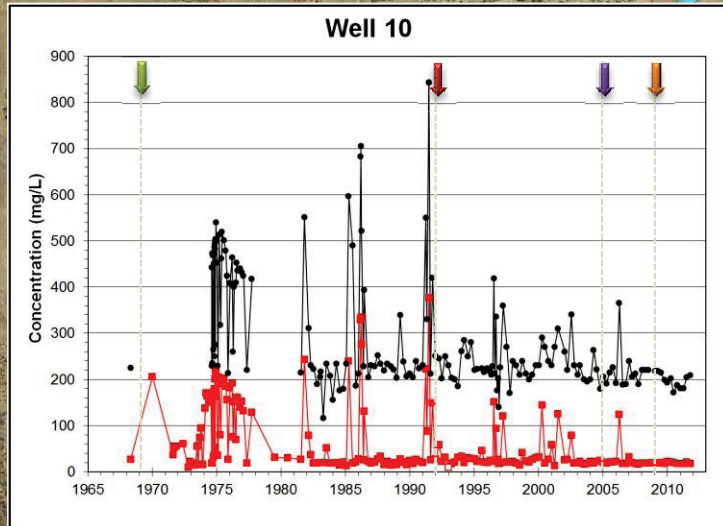
Central detail map area



- ↓ Tailing deposition begins
- ↓ Tailing deposition stops
- ↓ Reclamation begins
- ↓ Reclamation complete

No. 1, 1X and 1A Tailing Area

Southern detail map area



- ↓ Tailing deposition begins
- ↓ Tailing deposition stops
- ↓ Reclamation begins
- ↓ Reclamation complete