

An aerial photograph of a desert landscape. In the center, there are several large, light-brown, fan-shaped tailings ponds. To the left, a paved road and a railway line run parallel. The foreground is covered in sparse, low-lying green and brown vegetation. In the background, there are rolling hills and mountains under a clear sky. The text "Overview of Groundwater at the Tyrone Mine" is overlaid in large, bold, black font, with "October 30, 2012" below it in a slightly smaller font.

Overview of Groundwater at the Tyrone Mine

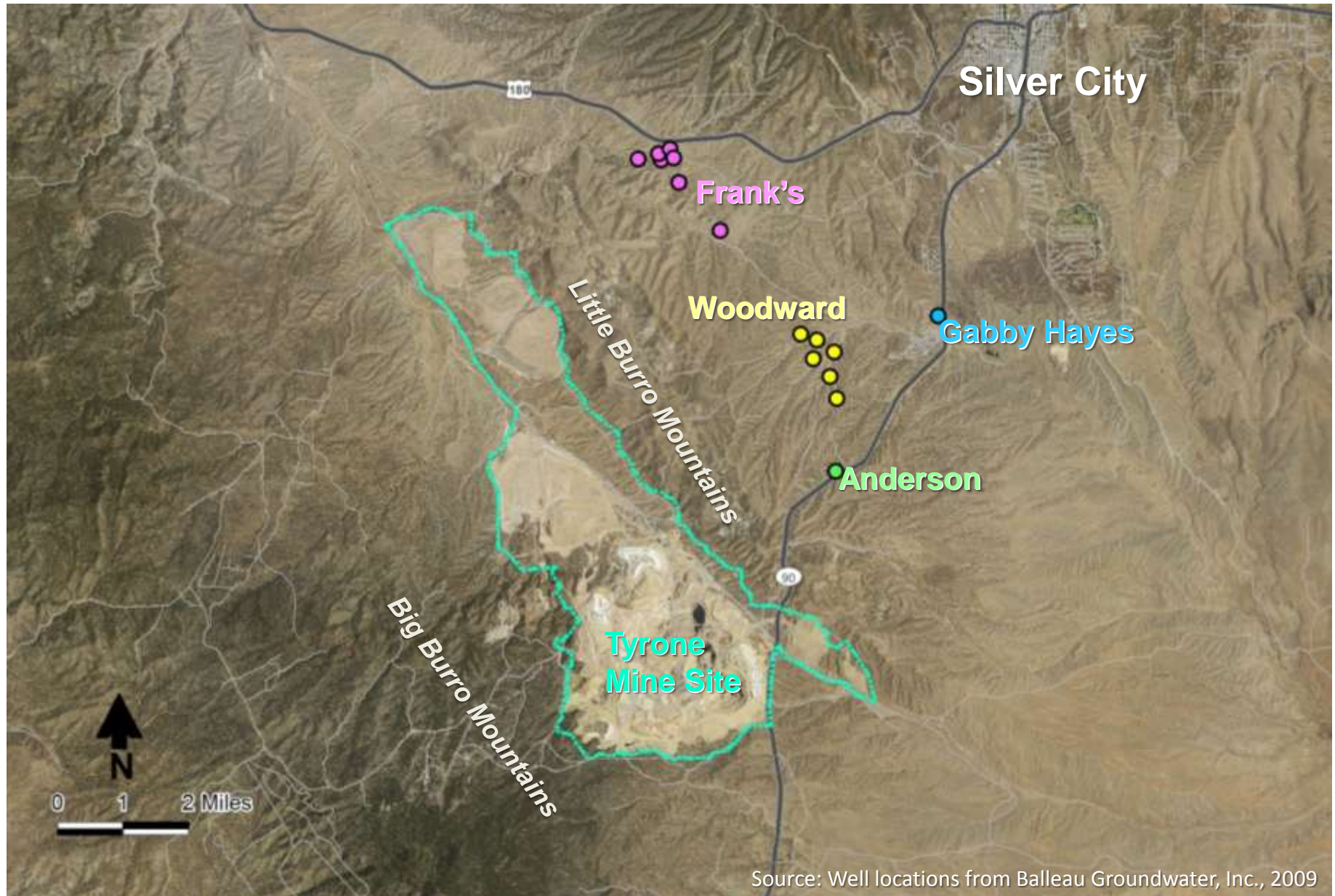
October 30, 2012

Introduction

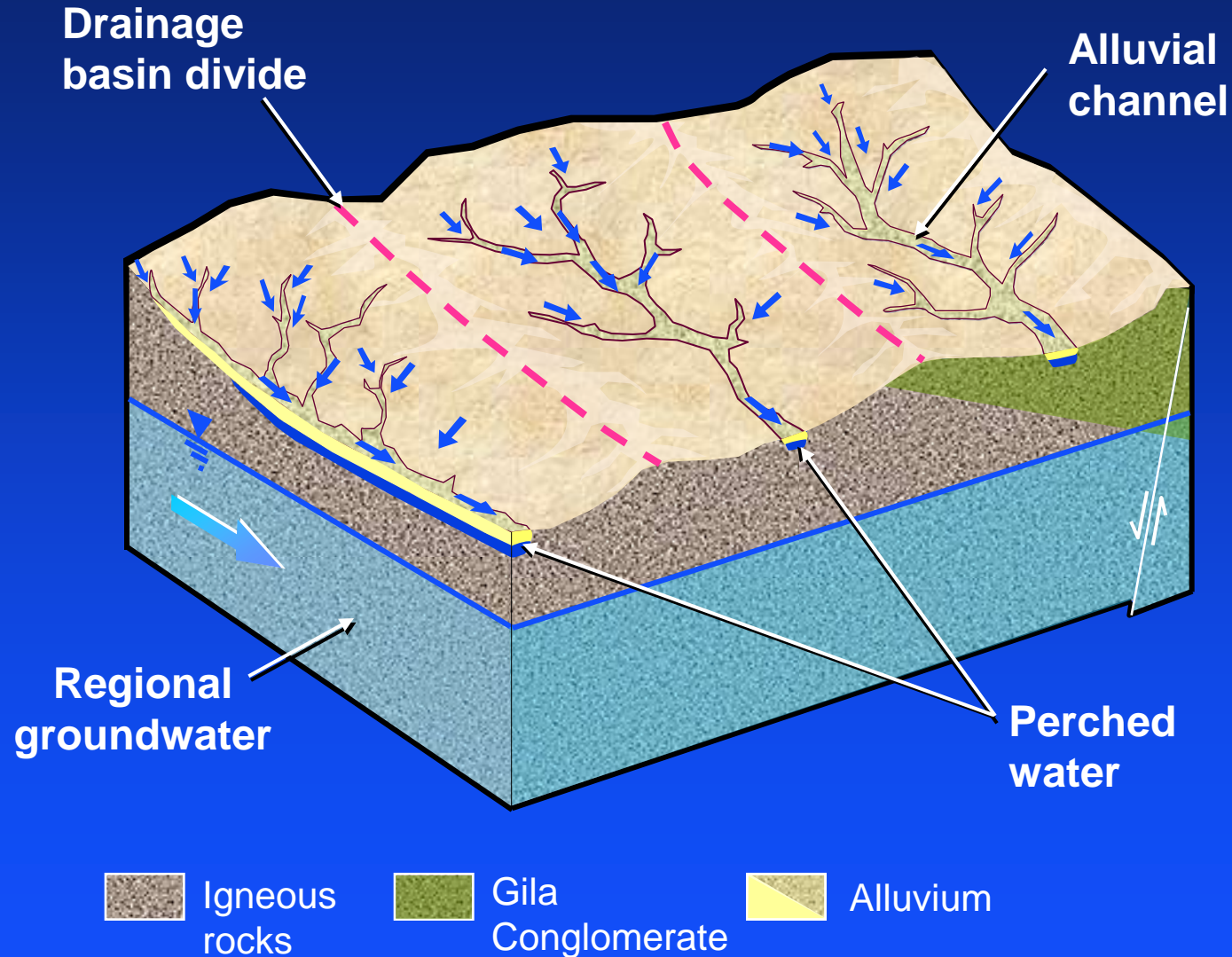
- ◆ Summary of groundwater conditions at the Tyrone Mine
- ◆ Sources of groundwater to Silver City wells



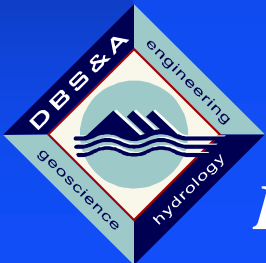
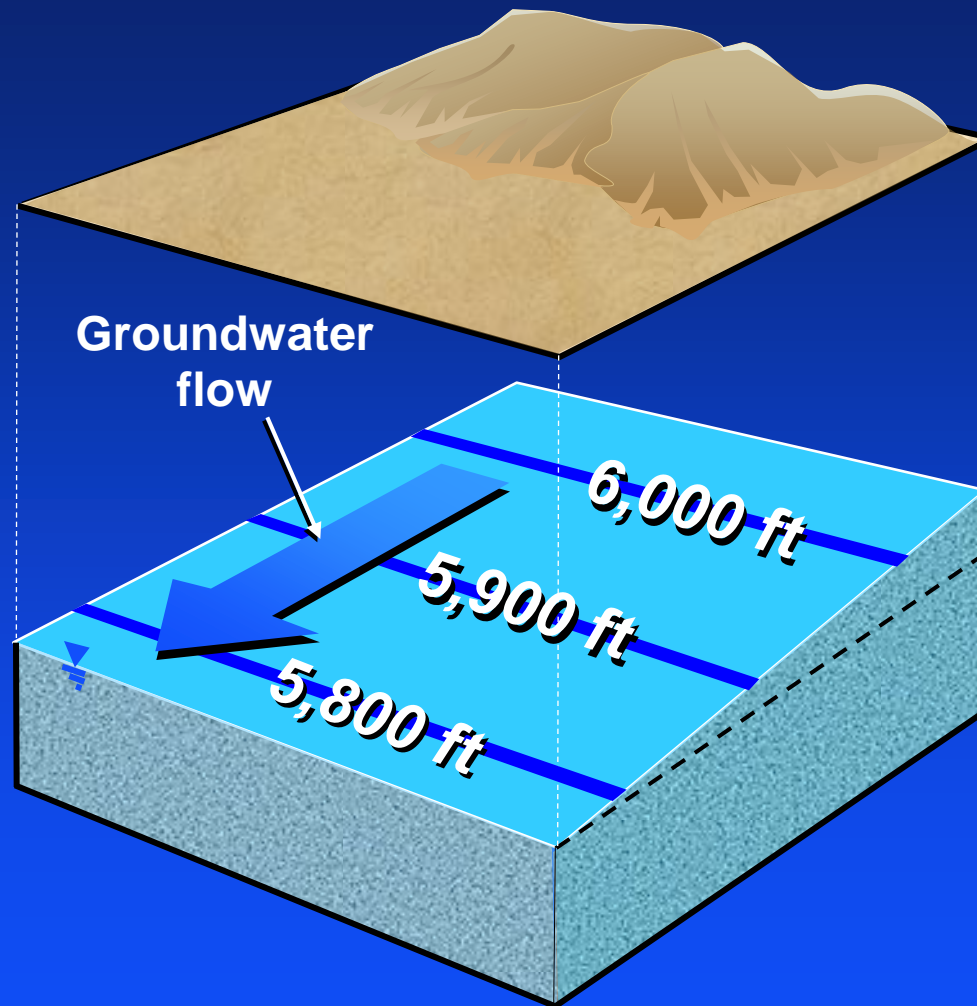
Tyrone Mine Site and Town of Silver City Wells



Perched Water and Regional Groundwater

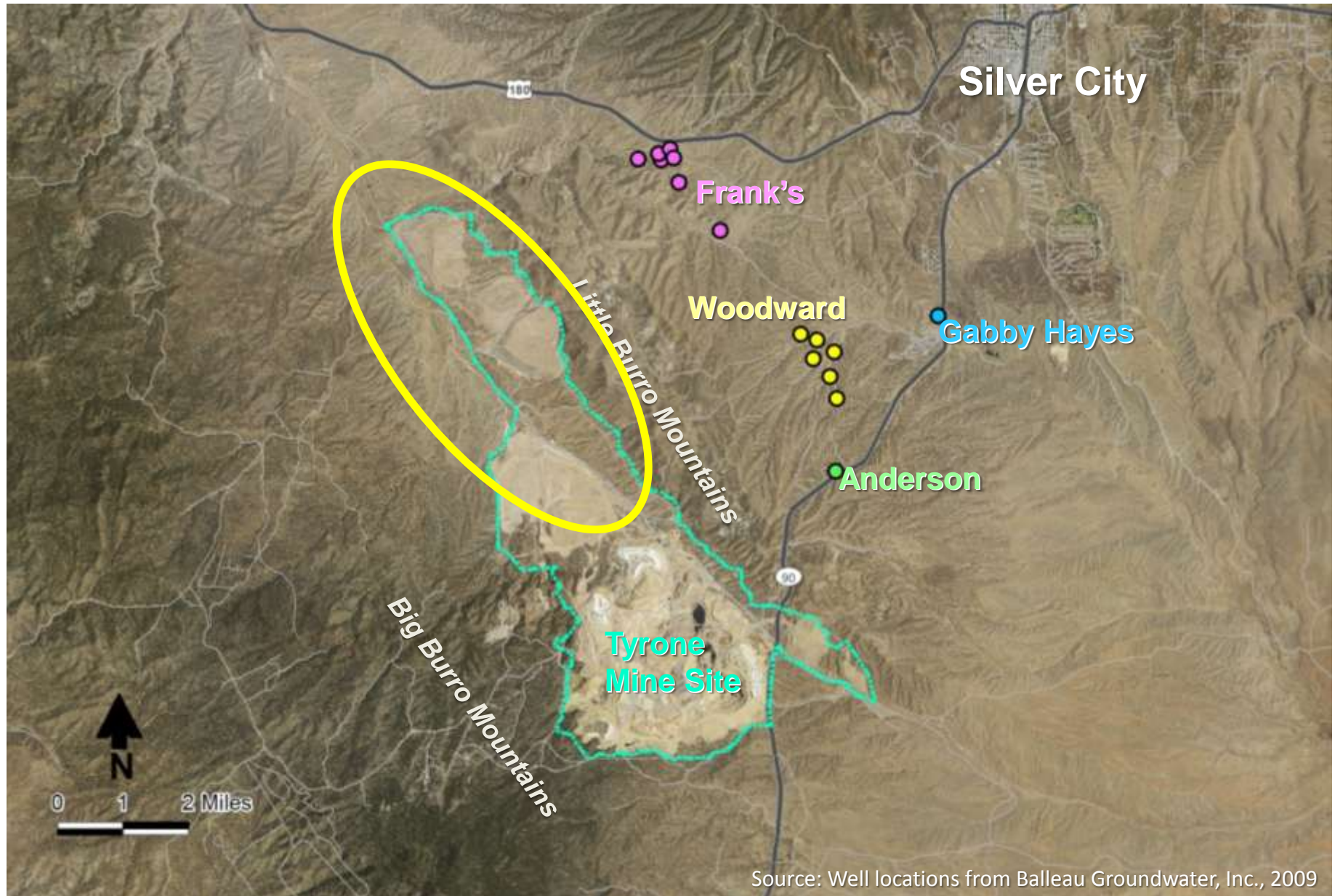


Water Table Contour Maps



Daniel B. Stephens & Associates, Inc.

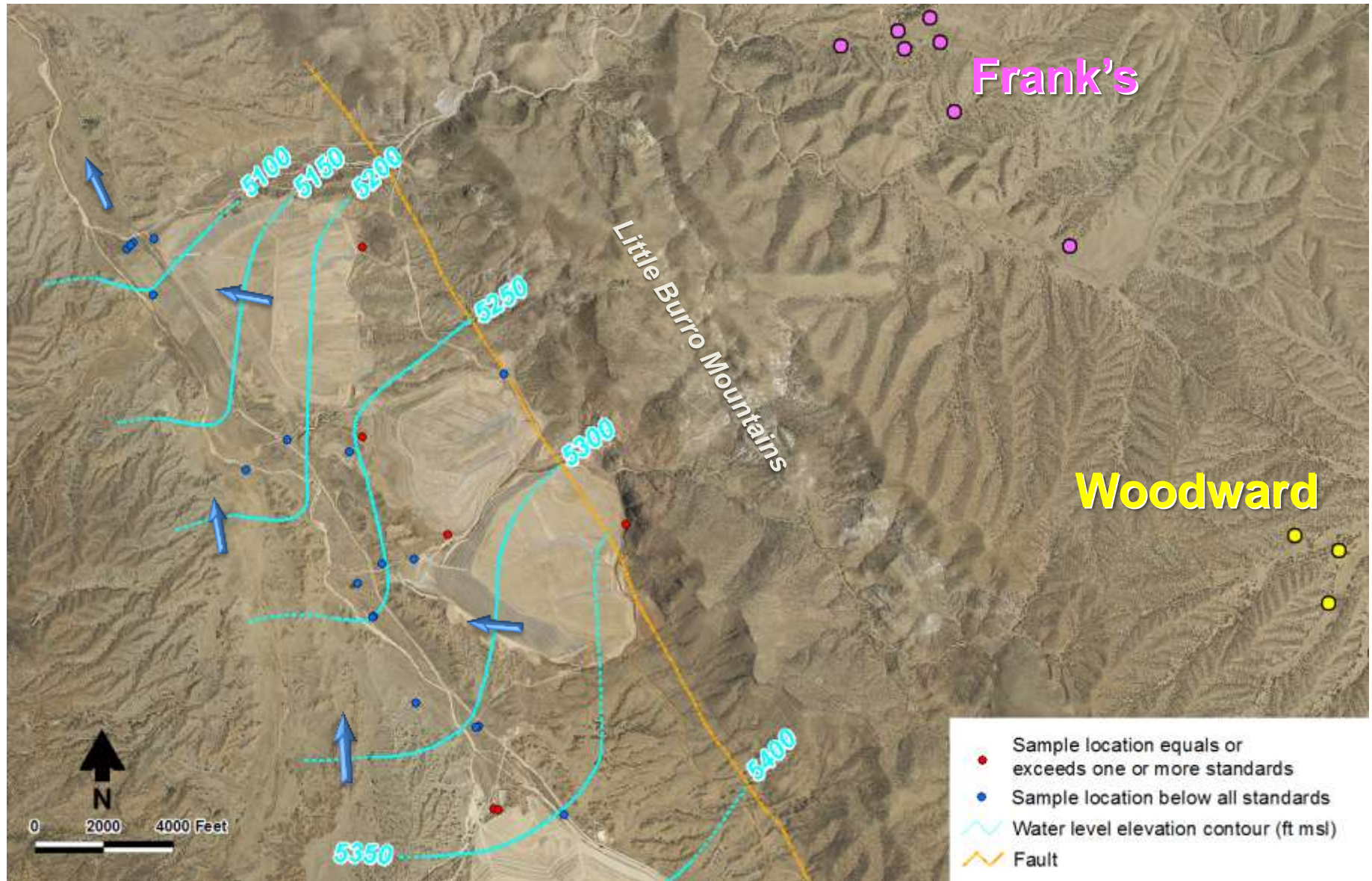
Mangas Valley Area



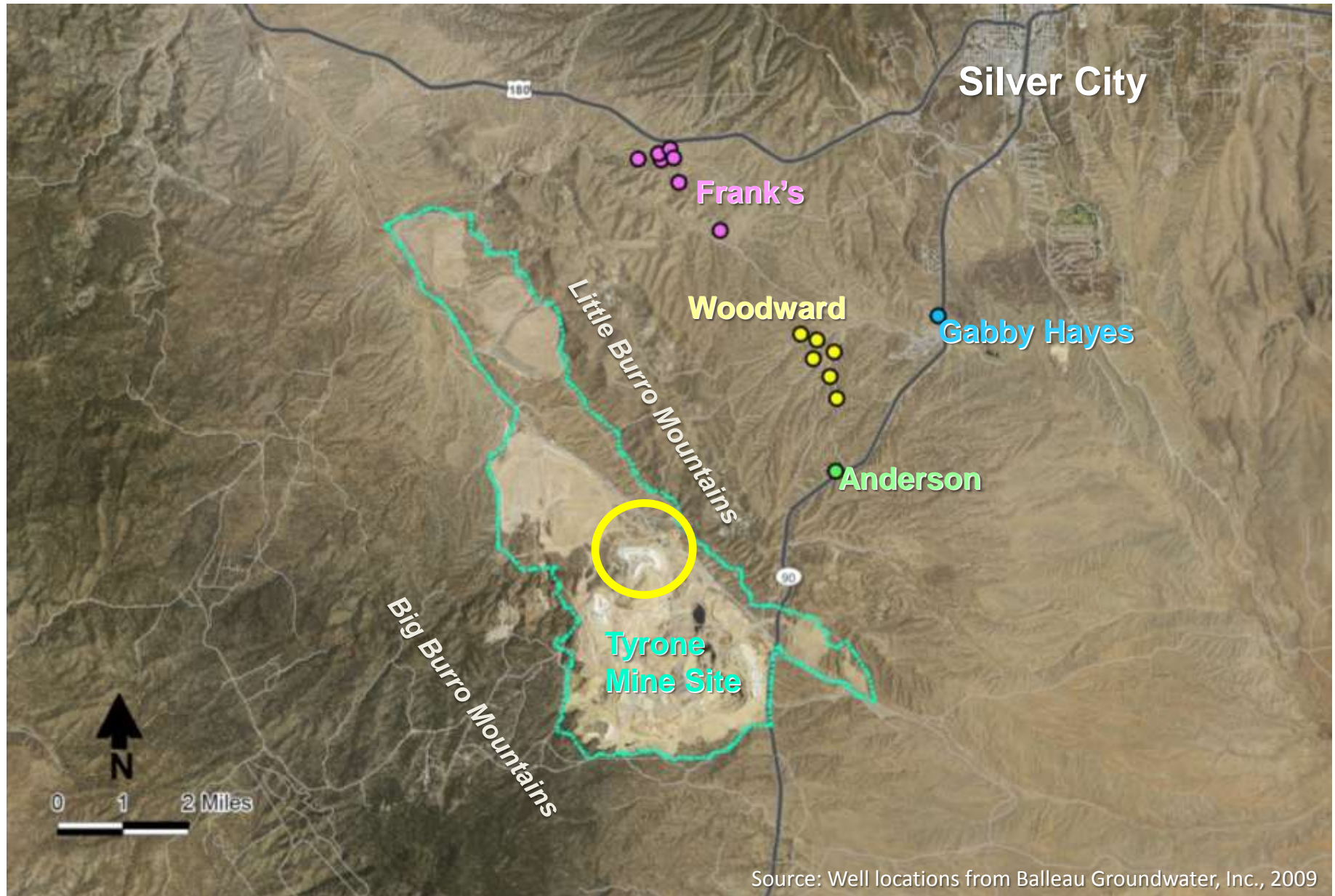
Mangas Valley Groundwater Reclaimed No. 2 Tailing Impoundment



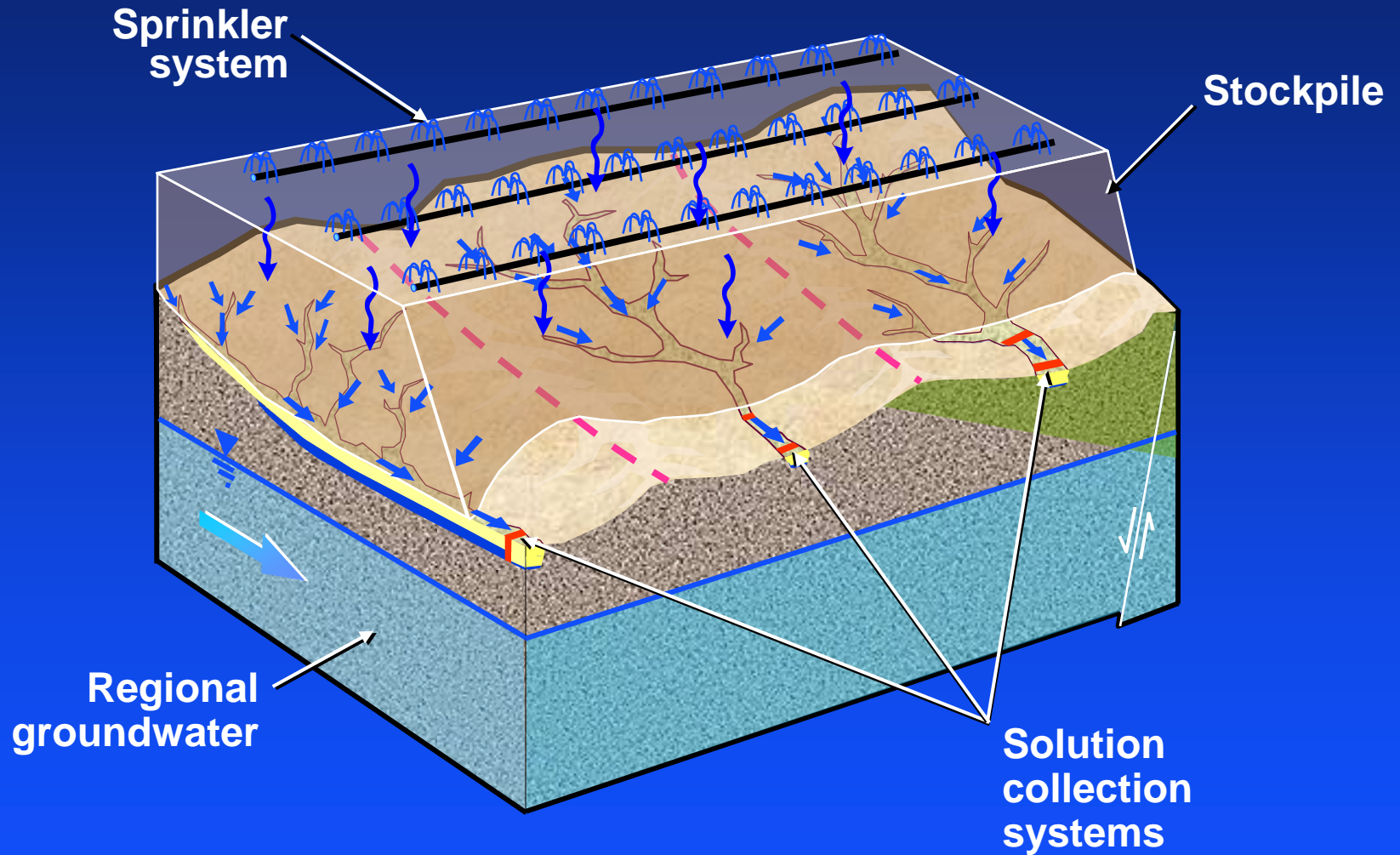
Regional Groundwater Elevation and Water Quality for Mangas Valley Tailing Area, 2010



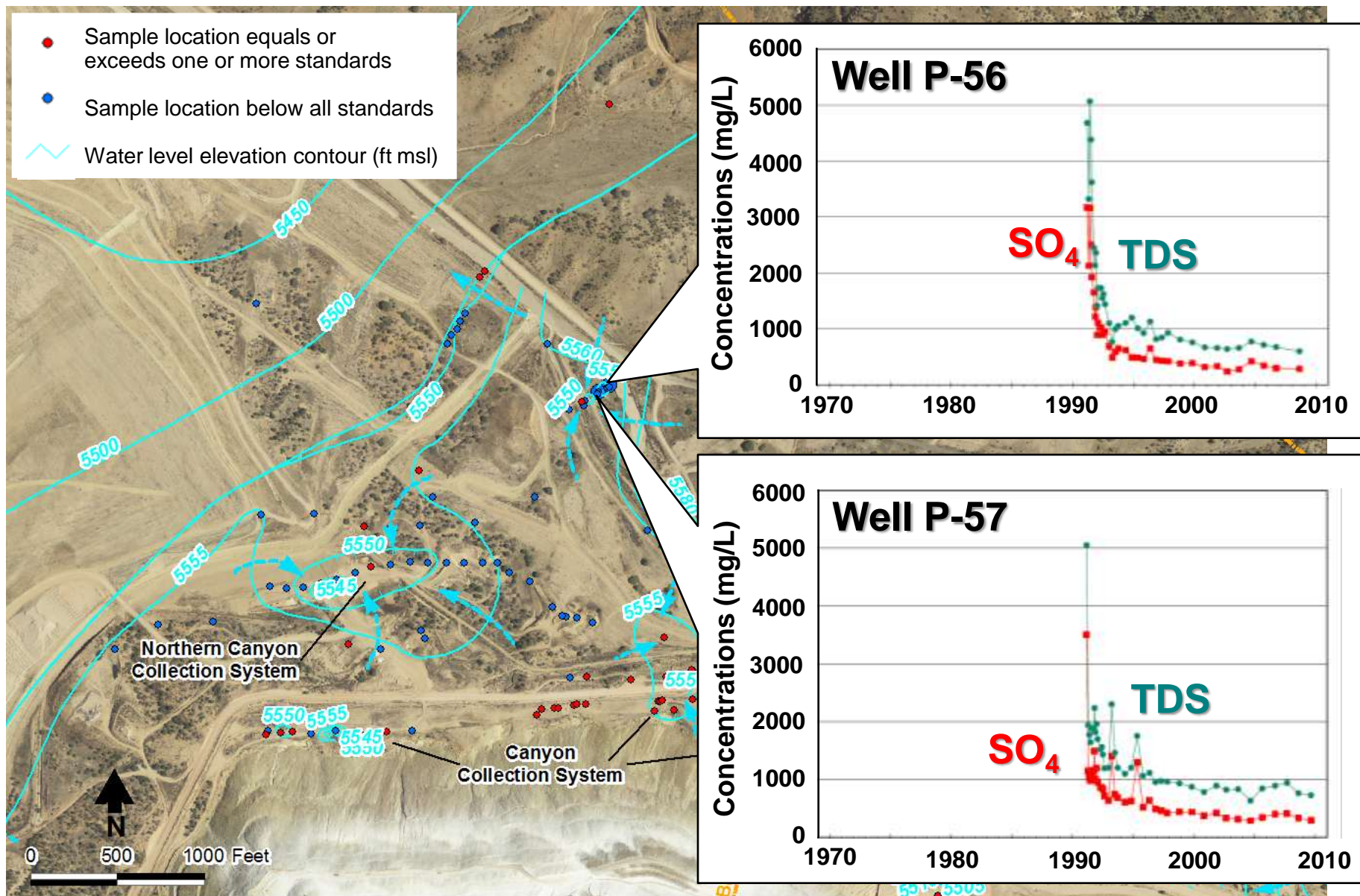
No. 3A Leach Stockpile - Capture Systems



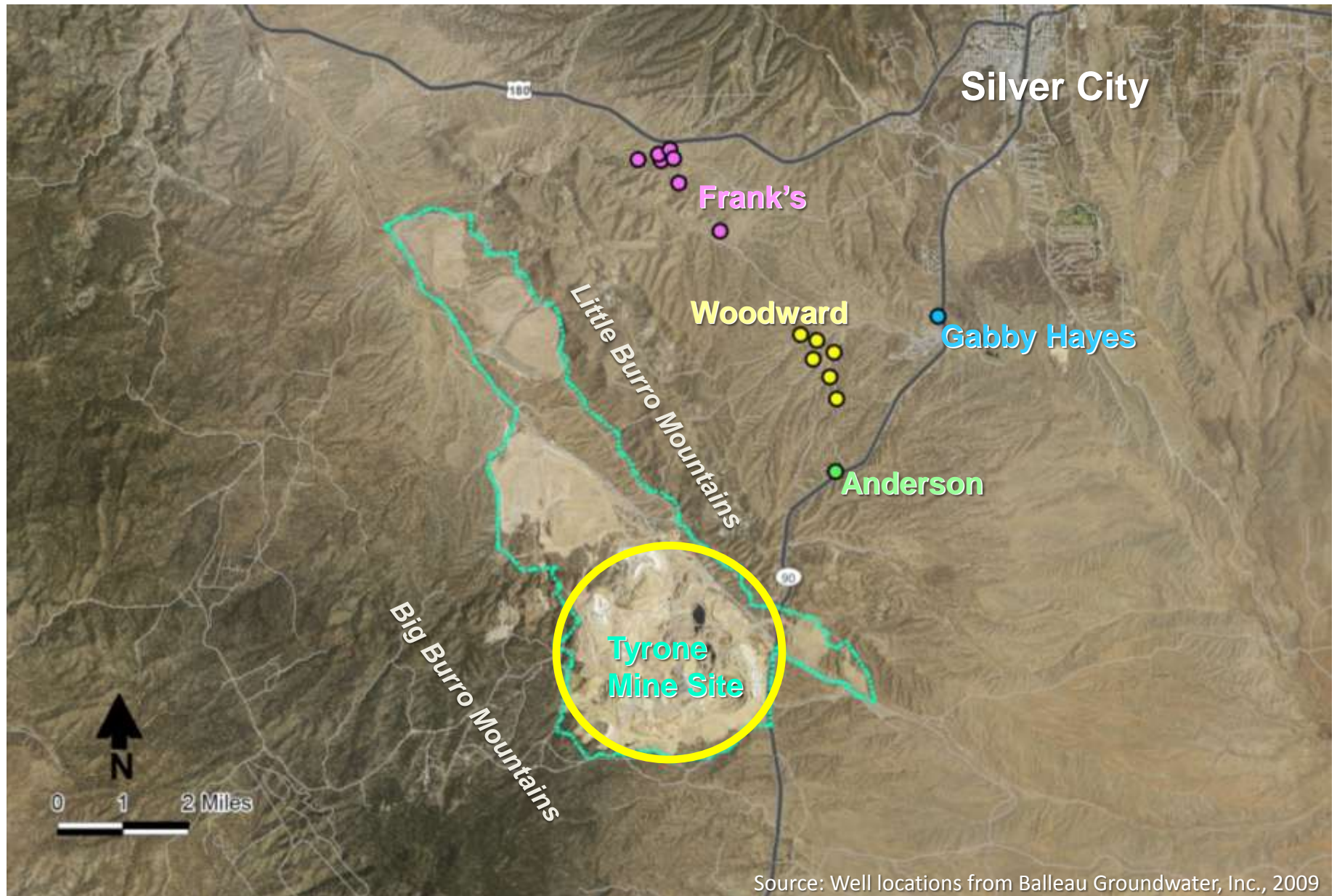
Leach Solution Collection Systems



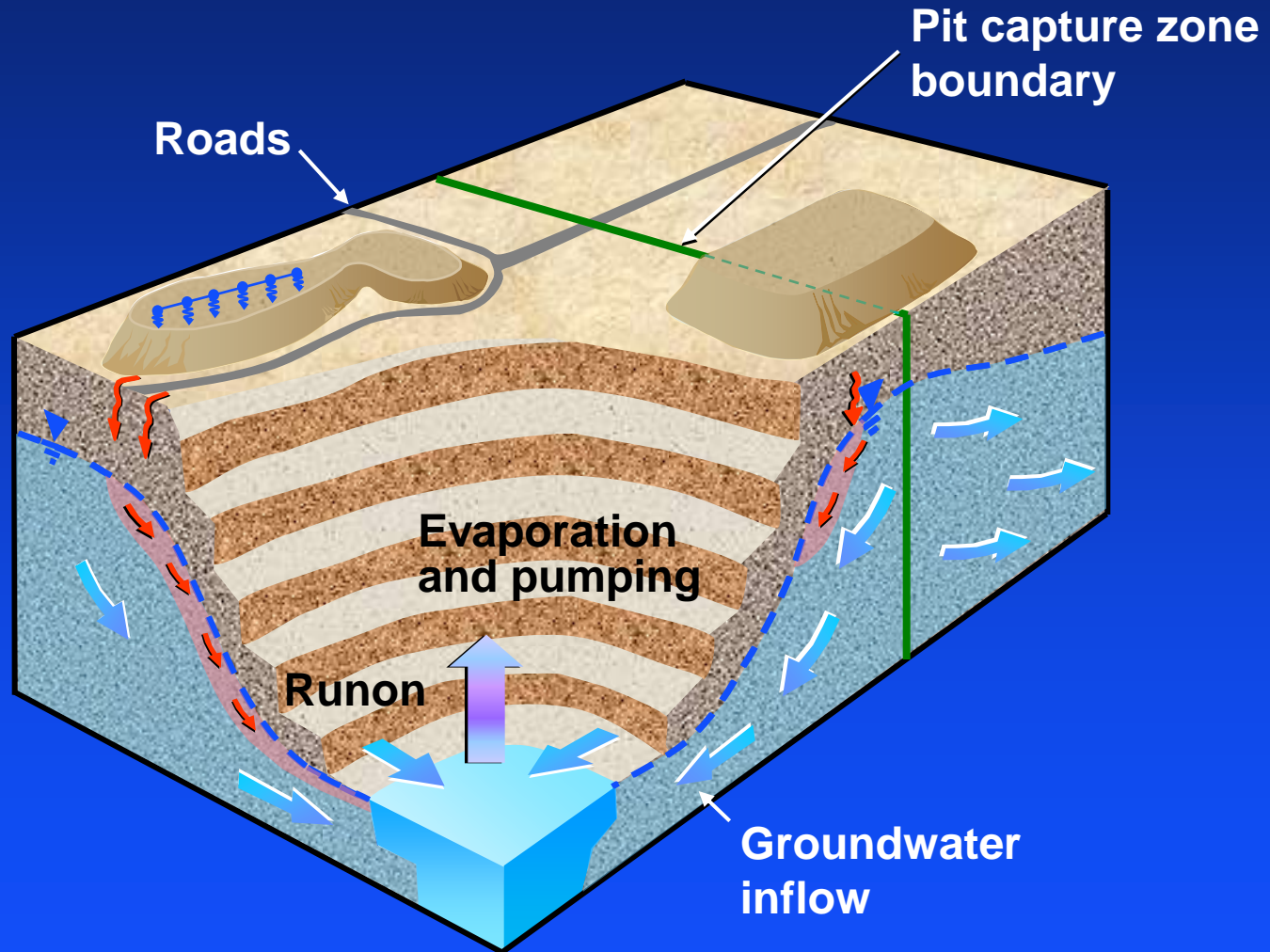
Regional Groundwater Quality and Collection Systems at No. 3A Leach Stockpile Area



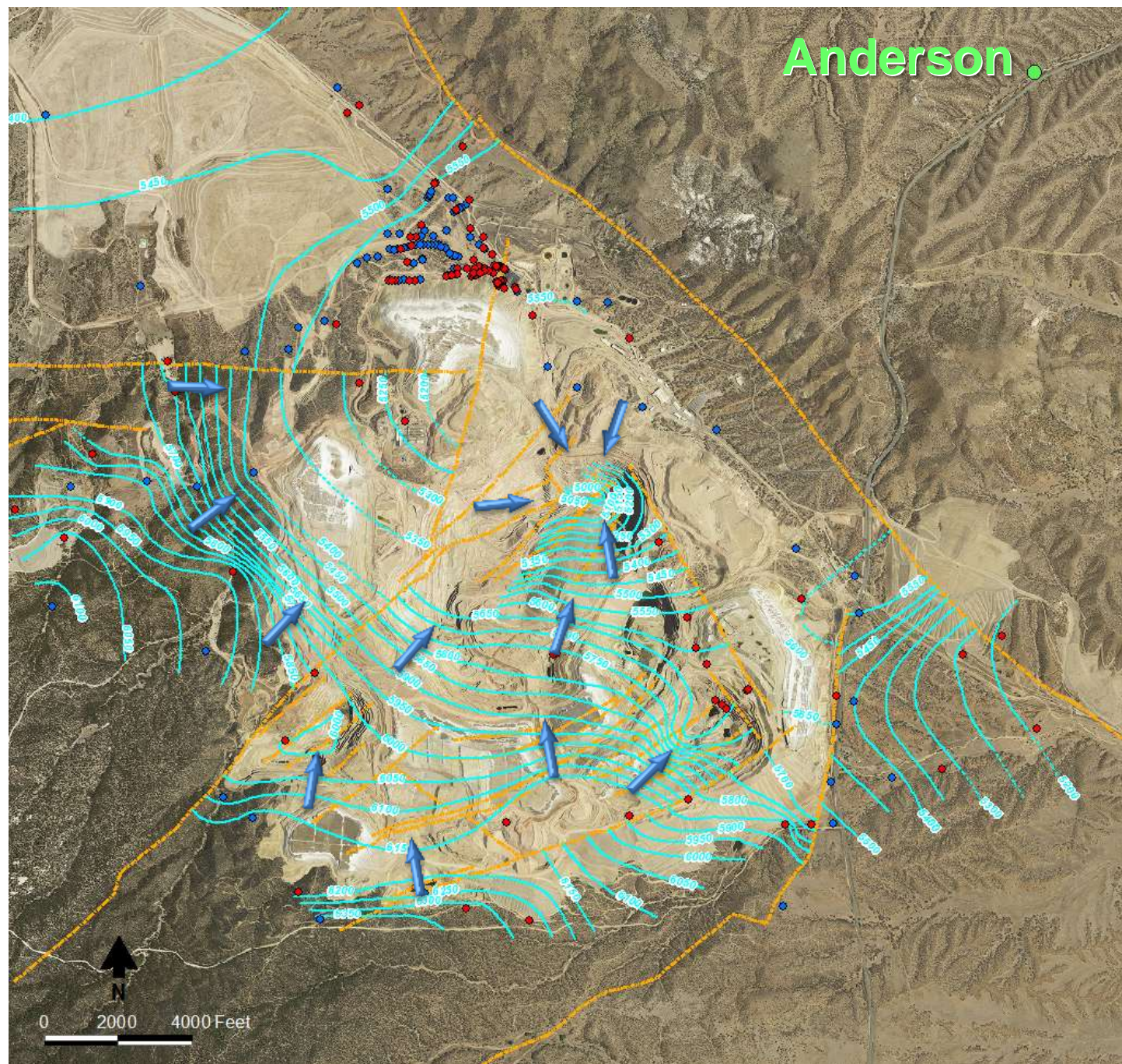
Mine/Stockpile Unit



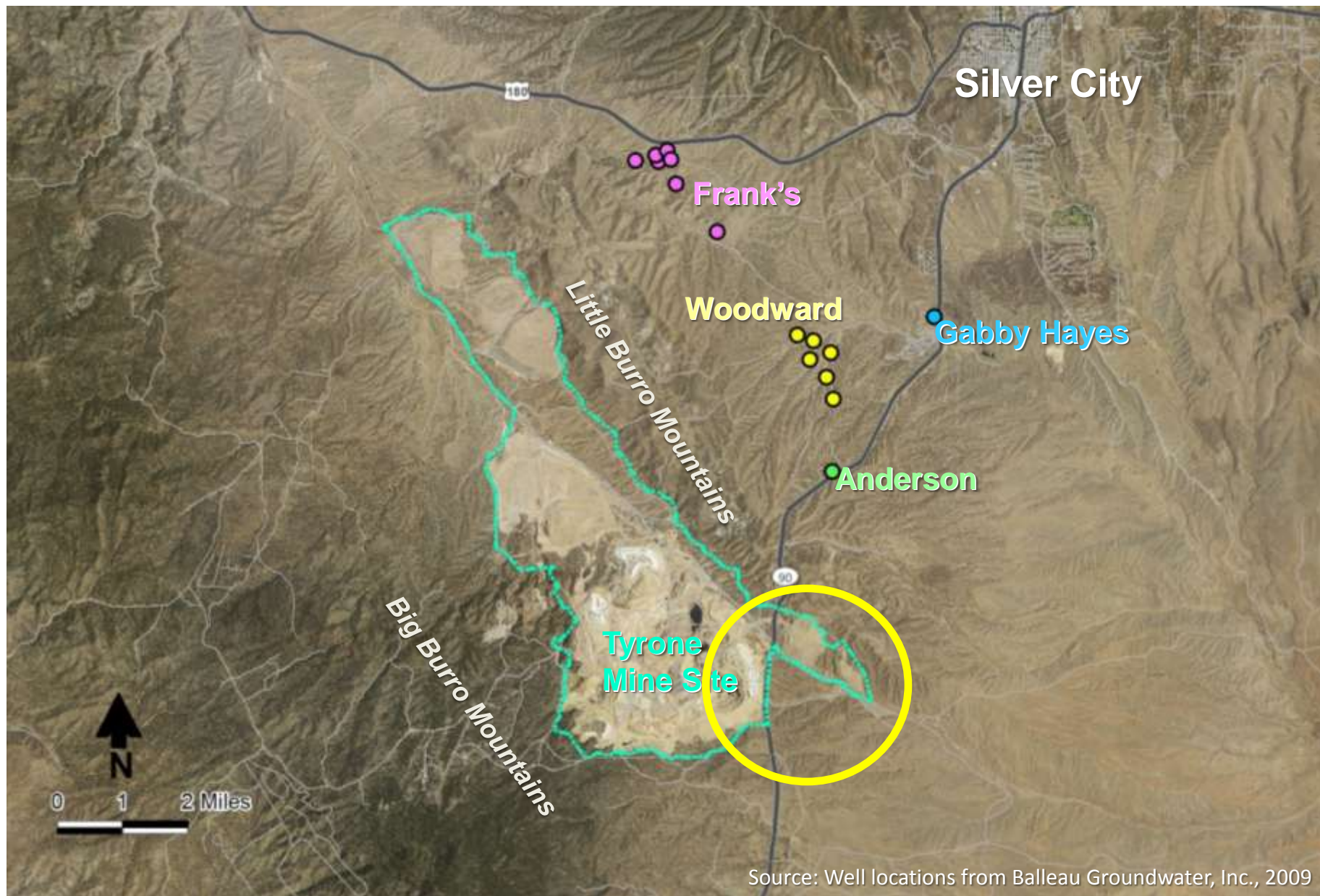
Pit Capture Zone



Regional Groundwater Elevation for Mine and Stockpile Area, 2010



East Side



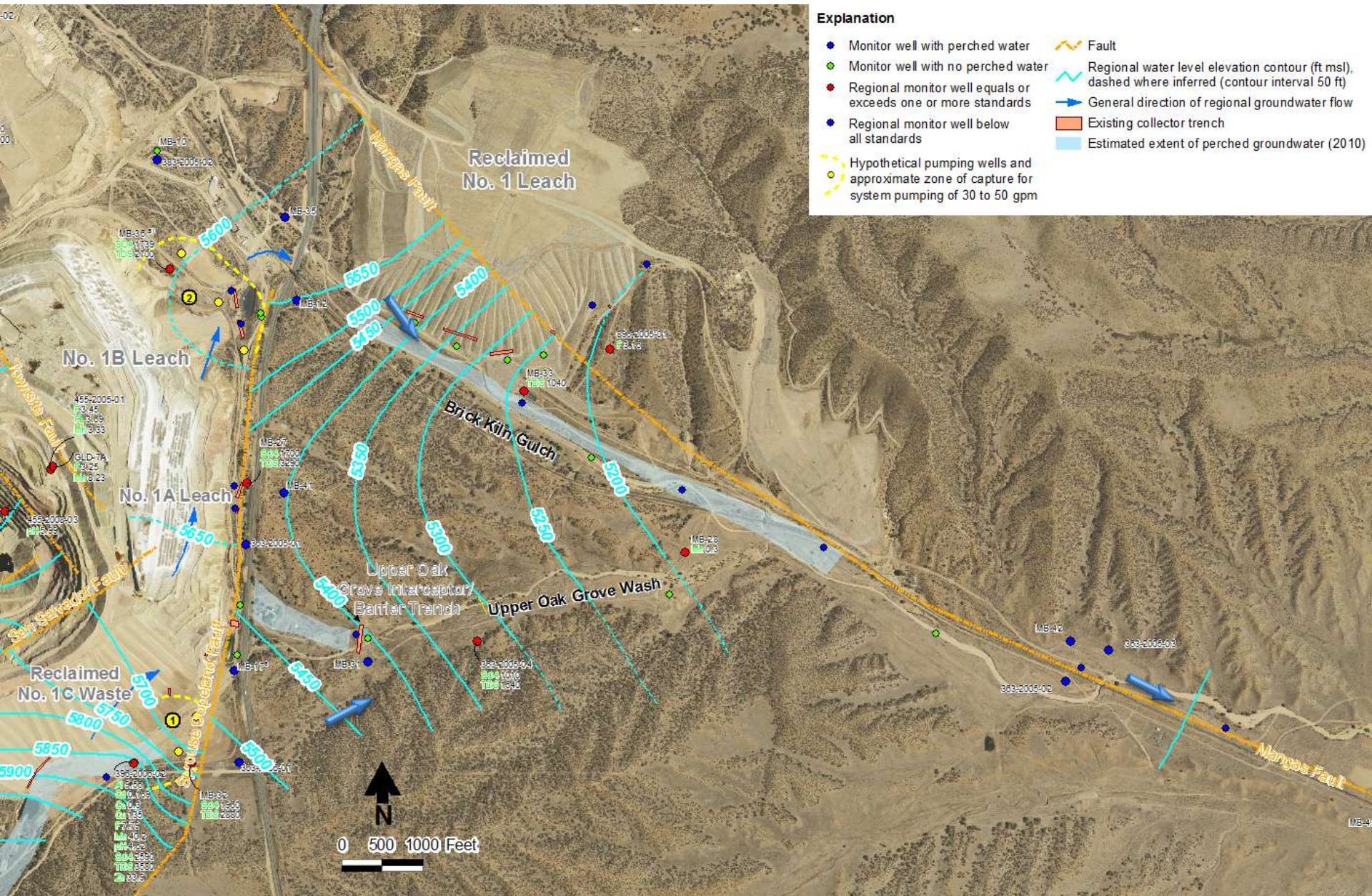
No. 1 Leach Stockpile



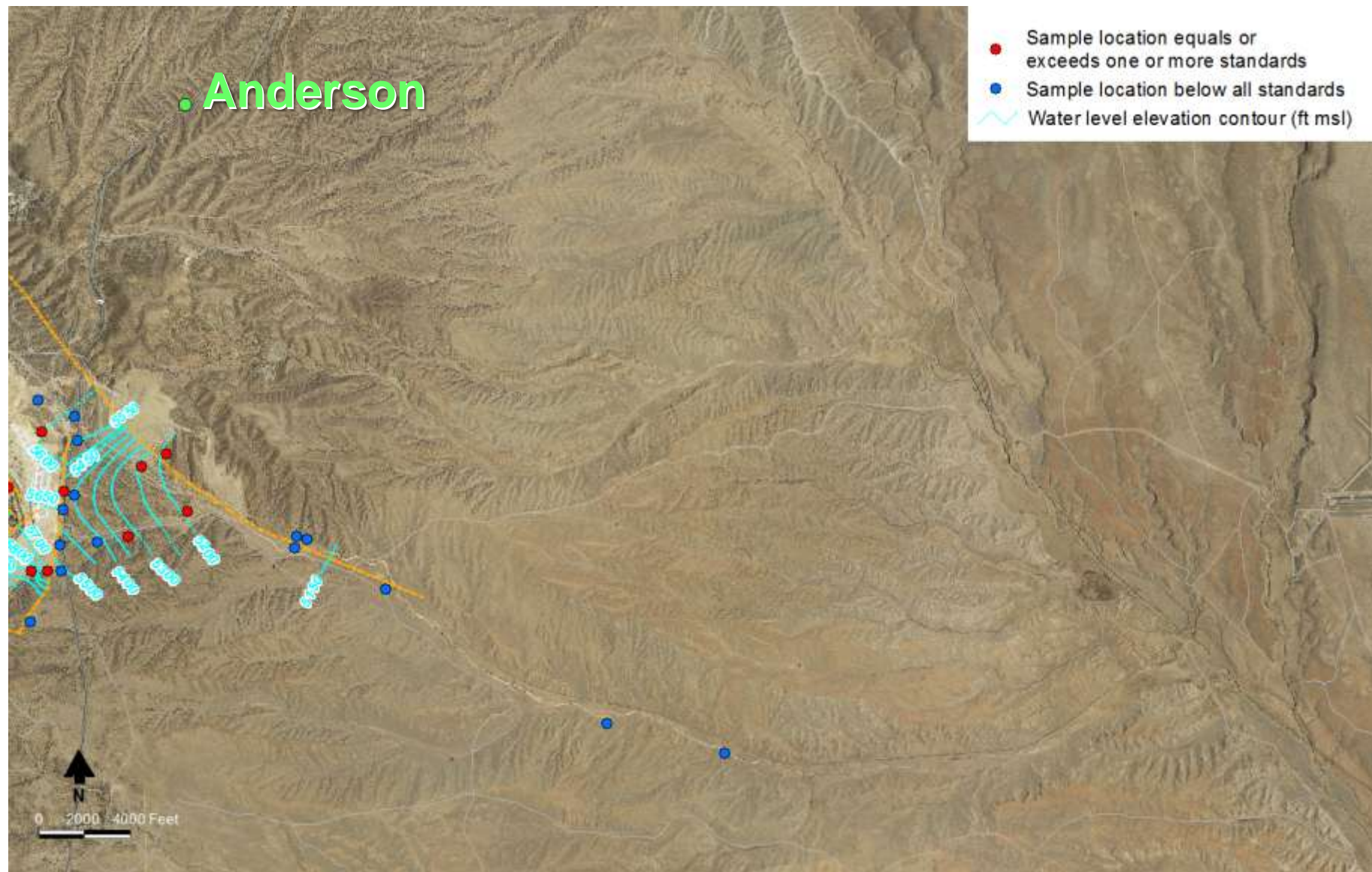
Reclaimed No. 1 Leach Stockpile



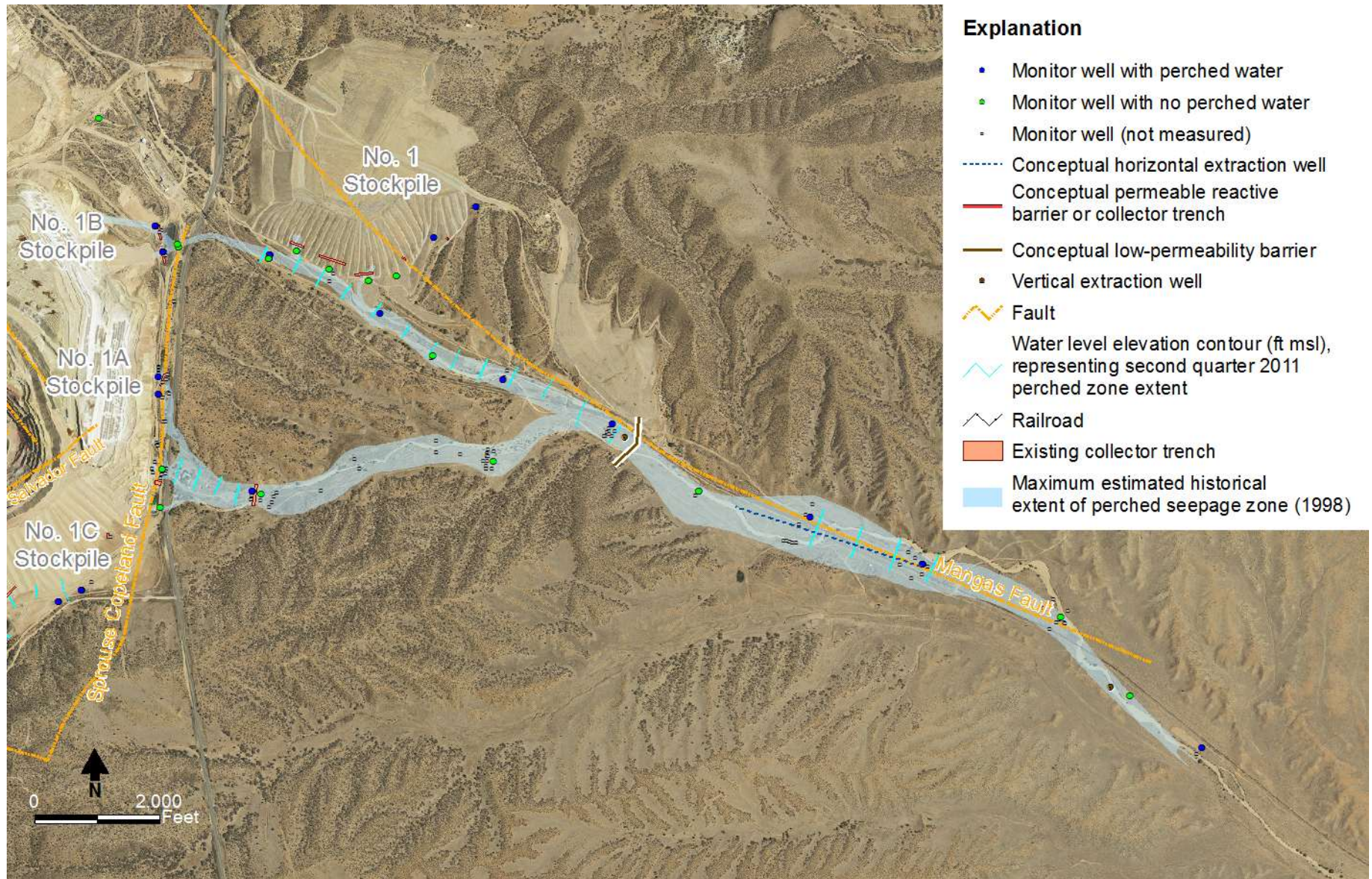
Tyrone East Side Groundwater Conditions



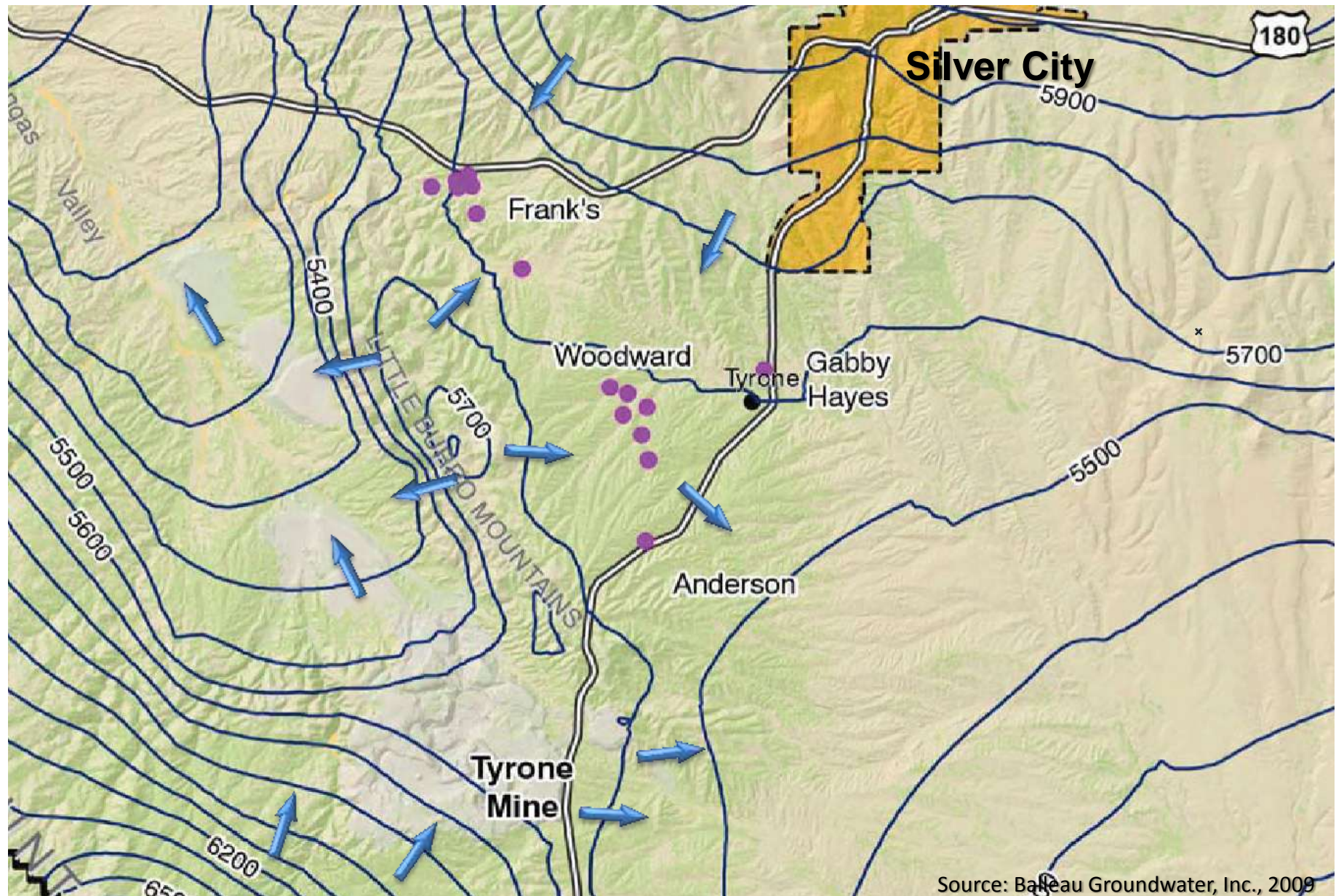
Tyrone Mine East Side Area, 2010



Eastside Perched Groundwater - Historical and Current

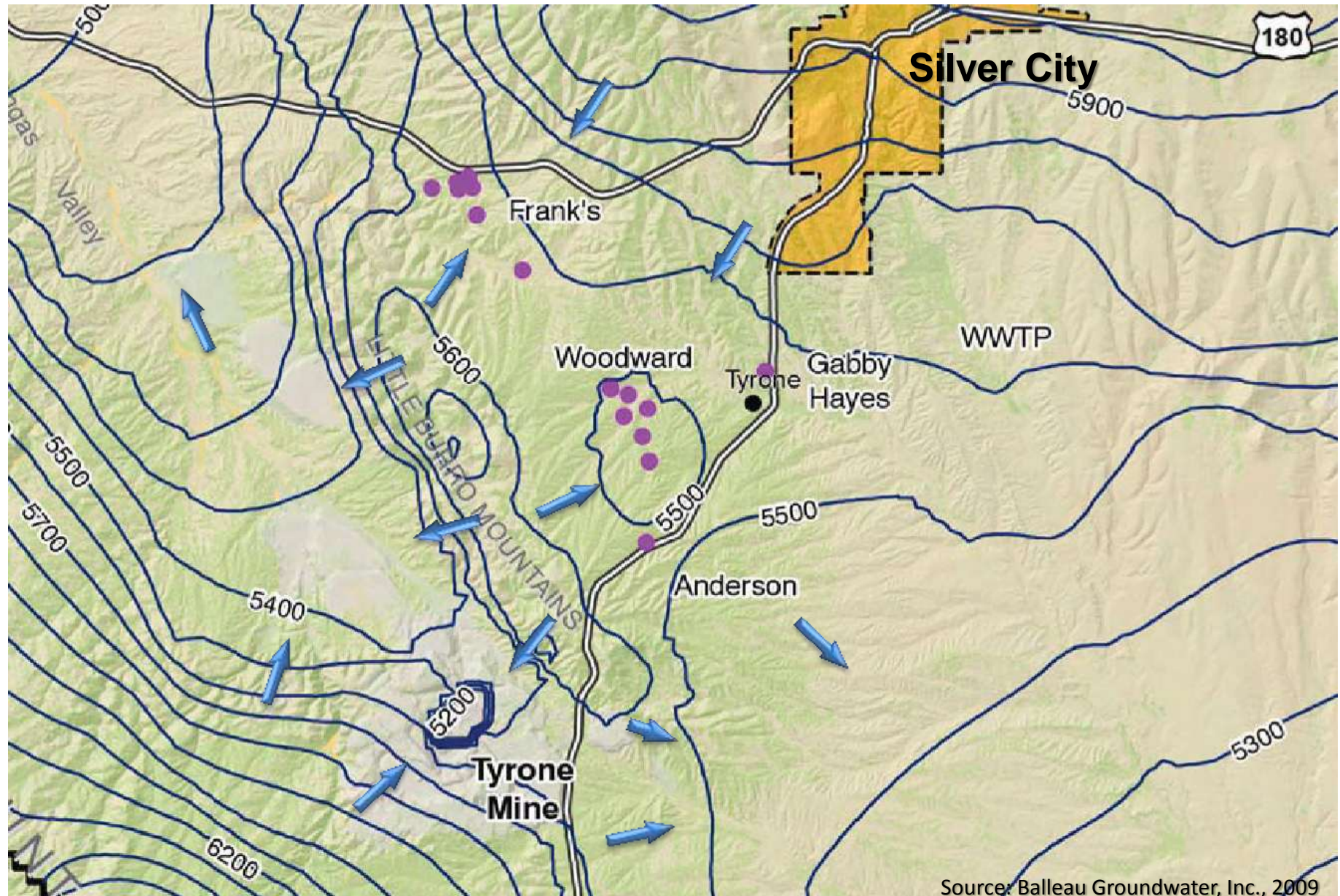


Simulated Pre-Development Water Levels



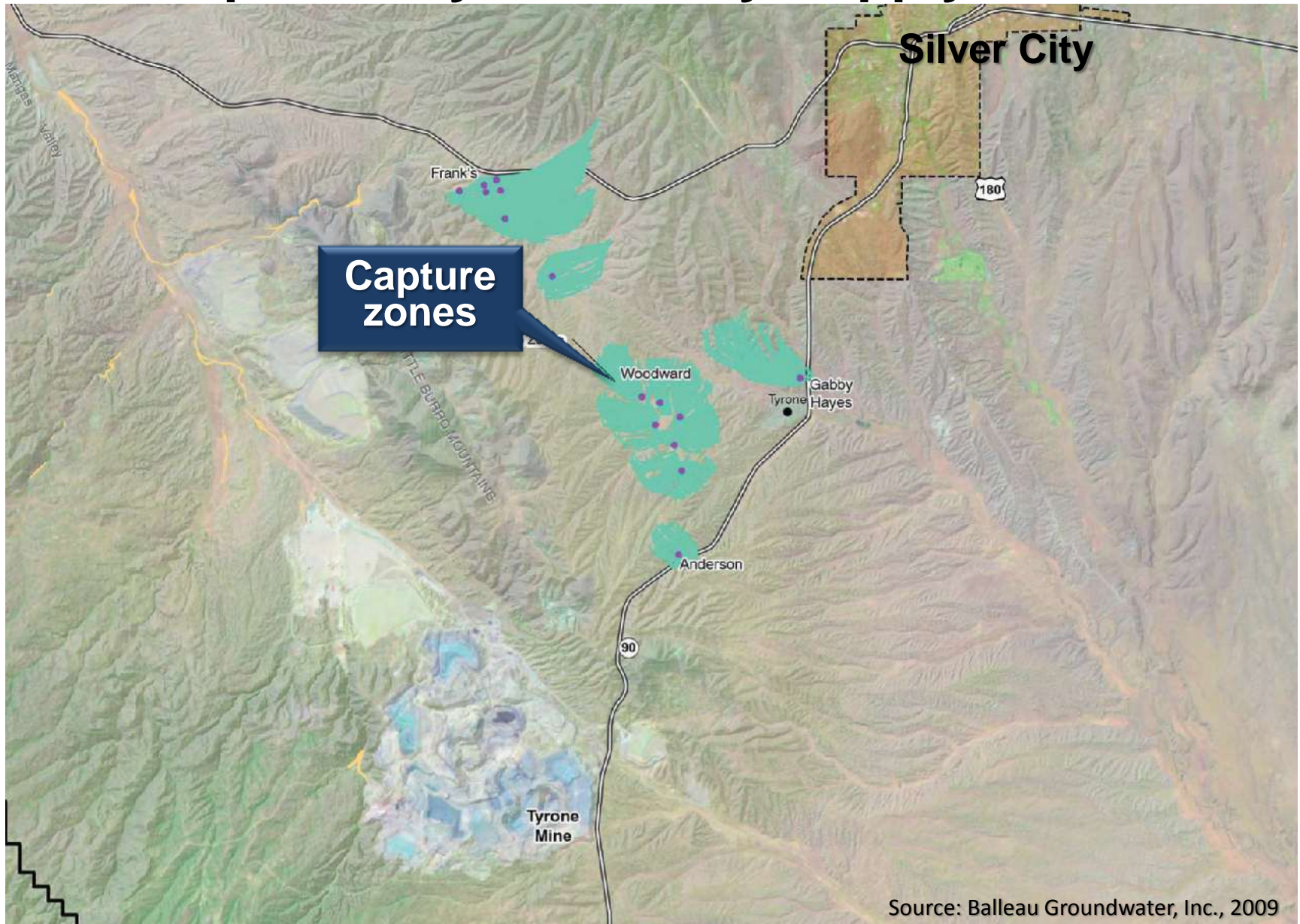
Source: Balleau Groundwater, Inc., 2009

2008 Simulated Water Levels

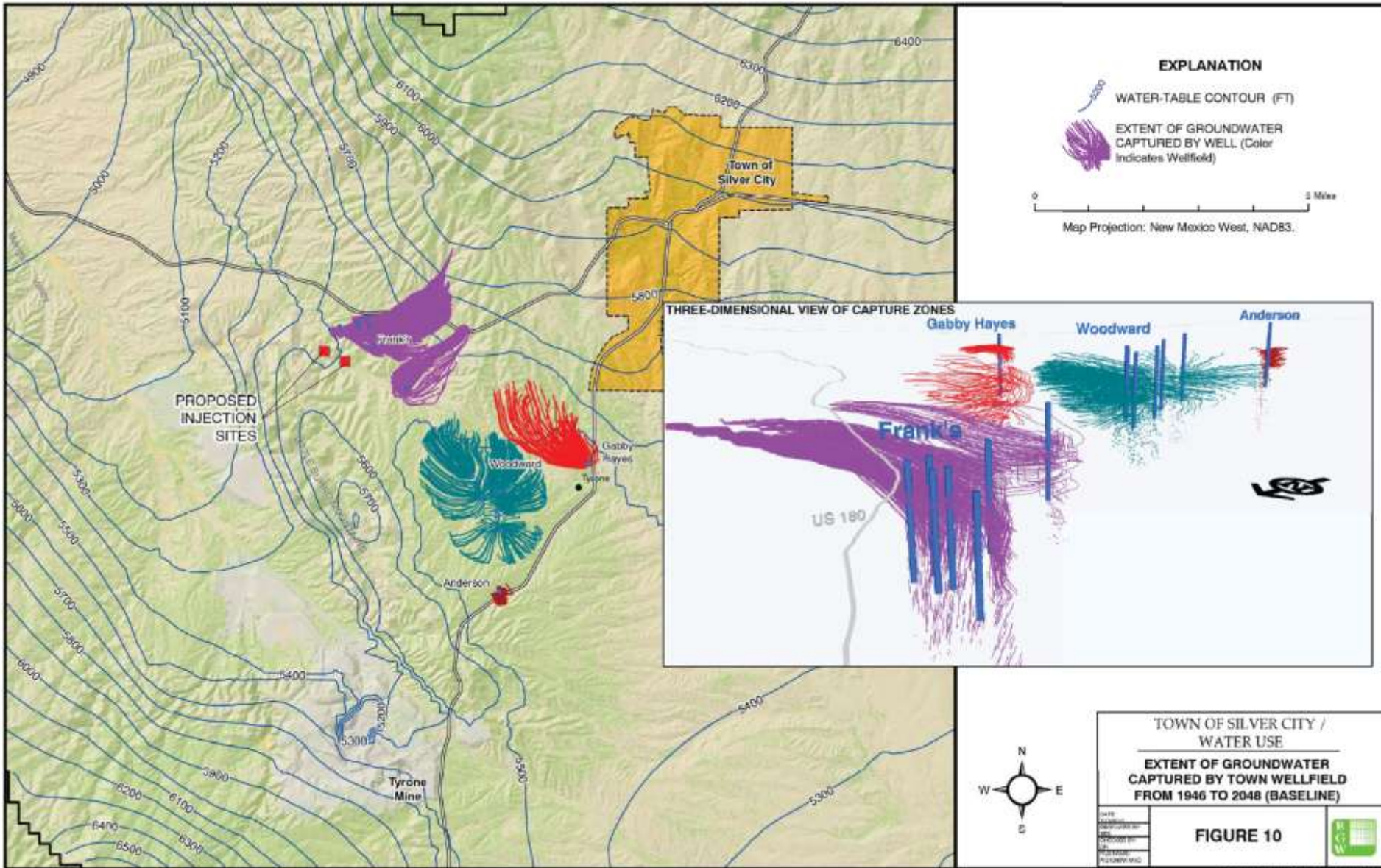


Source: Balleau Groundwater, Inc., 2009

Historical Extent (1946-2008) of Groundwater Captured by Silver City Supply Wells



Predicted Extent (1946-2048) of Groundwater Captured by Silver City Supply Wells



Conclusions

- ◆ Impacted groundwater does occur beneath some areas of the Tyrone Mine
- ◆ Areas of impacted groundwater have been investigated, are monitored, and various capture systems and source control measures have been implemented
- ◆ NMED oversees all groundwater monitoring and abatement activities



Conclusions - Continued

- ◆ Groundwater beneath and adjacent to the Tyrone Mine has not in the past, does not currently, and will not in the future flow toward the Town of Silver City water supply wells
- ◆ Consequently, Tyrone has not affected and will not affect the Town's water supply wells



An aerial photograph of a desert landscape. In the center, a large, terraced agricultural field is visible, characterized by numerous parallel, light-colored ridges or furrows that create a striped pattern across the brownish soil. The field is situated on a gentle slope. To the left of the field, a paved road curves through the landscape, bordered by sparse green desert vegetation. In the background, rolling hills and mountains are visible under a clear sky. The foreground shows more of the desert scrub and a dirt path. The text "Thank You" is superimposed in the middle of the image.

Thank You