



# New Mexico Environment Department

Los Alamos Community Engagement Meeting

July 8, 2019

A scenic landscape photograph serves as the background. It shows a wide river in the foreground, with a gravel bar in the middle. The banks are covered in dry grass and shrubs. In the background, a large, rugged mountain range stretches across the horizon under a clear blue sky with a few wispy clouds.

# Welcome!

1

# Community Engagement

**James C. Kenney, Secretary**

New Mexico Environment Department

[james.kenney@state.nm.us](mailto:james.kenney@state.nm.us)

**Stephanie Stringer, Director**

Resource Protection Division

[stephanie.stringer@state.nm.us](mailto:stephanie.stringer@state.nm.us)

To submit topics for future meetings, email:

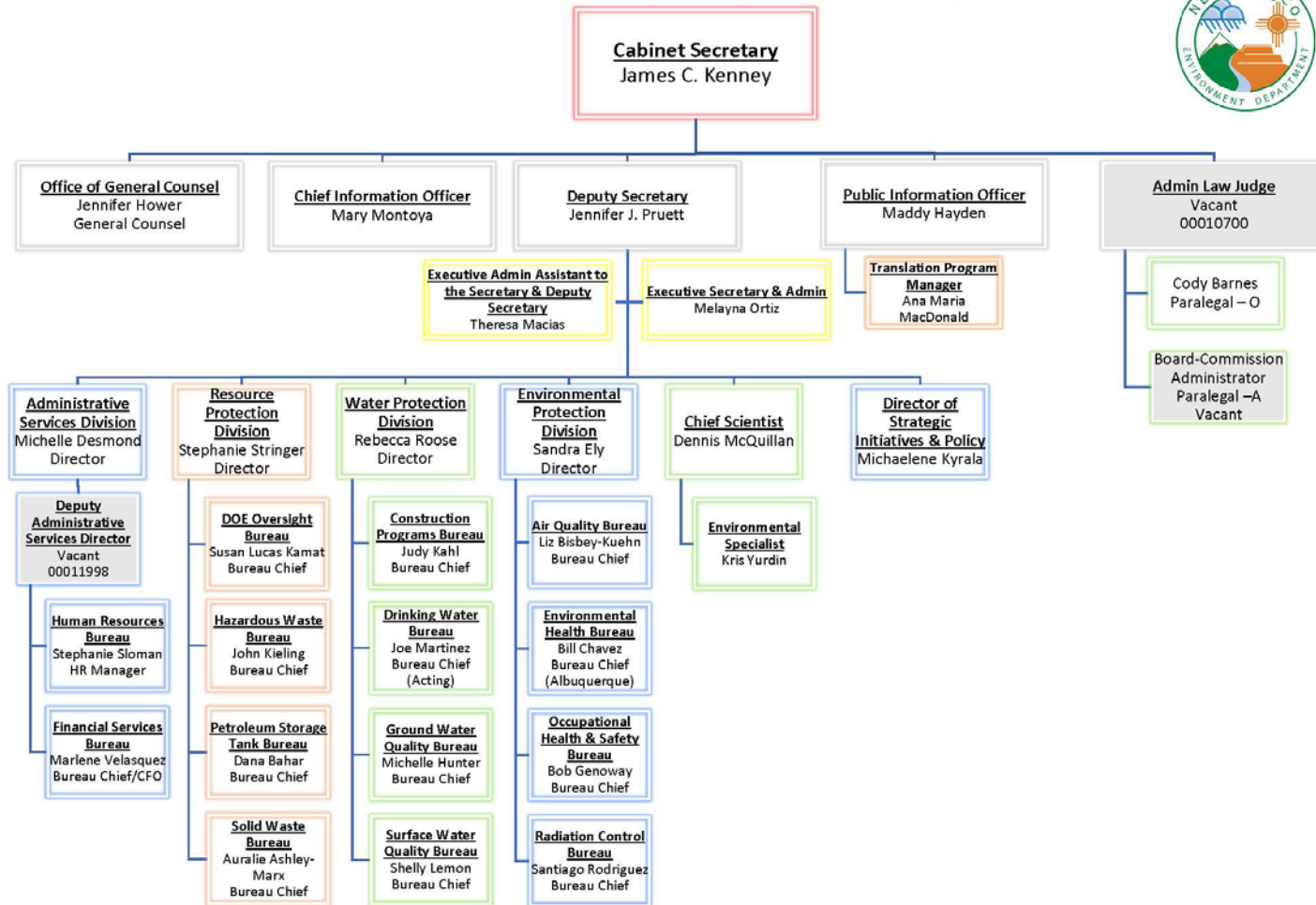
[stephanie.stringer@state.nm.us](mailto:stephanie.stringer@state.nm.us)





# Community Engagement

New Mexico Environment Department | Office of the Secretary



All staff are located in Santa Fe unless otherwise noted. Updated 5/31/19



# Community Engagement







# Los Alamos Field Office Move

Jan-Feb

- New Administration/Management
- Legislative Session

Mar-May

- Department-wide review of leases
- Ensure continuity of mission - secure Santa Fe location for Los Alamos Field Office as a *contemplated* action

Jun-Aug

- Standard process to work with employee union, State Personnel Office, General Services Department, Lessor, affected employees, and community
- Request for Proposal (RFP) for Los Alamos Field Office in Los Alamos County



# Los Alamos Field Office Move

## Considerations and Criteria

- ✓ Employee Safety
- ✓ Ability to Perform Job
- ✓ Number of Offices
- ✓ Lab Space
- ✓ Conference Rooms/Break Areas
- ✓ Facilitates Collaboration within NMED
- ✓ Storage Space
- ✓ Affordable/State of the Art

# Commercial Lease Procurement – Request for Proposal

Michelle Desmond, Director  
NMED Administrative Services Division  
[michelle.desmond@state.nm.us](mailto:michelle.desmond@state.nm.us)





# GENERAL OFFICE SPACE STANDARDS SUMMARY

GSD sets the rules,  
including:

- Maximum amount of space per position
- A balance between open and private offices
- Goal of efficiency and cost effectiveness

NMED and GSD are  
working together

Designation	Open Office Work Station	Private Office
Administrative Positions		280 sq. ft.
		220 sq. ft.
	144 sq. ft.	150 sq. ft.
Supervisory Positions	120 sq. ft.	150 sq. ft.
	100 sq. ft.	120 sq. ft.
Professional/Technical Sr.		150 sq. ft.
Professional/Technical	81-100 sq. ft.	
	64-81 sq. Ft.	
Clerical Positions Sr.	81 sq. ft.	
	64-49 sq. ft.	
Field/Shop/Lab/ Warehouse/Interns	36-49 sq. ft.	



# Request for Proposal Process

Request for Proposal issuance in August 2019 for Los Alamos County

Pre-Proposal Conference

Open Proposals (Date Stamp);  
Determine if Complete and Applicable

Evaluation Committee Develops Criteria  
and Evaluates Proposals

Evaluation Committee Develops List of  
Offerors and Negotiates Contract

**Evaluation  
Committee must  
abide by strict  
code of conduct  
and confidentiality  
terms.**



Questions so far?



# Department of Energy Oversight Bureau (DOE-OB)

Susan Lucas Kamat, Chief

Stephen Yanicak, Los Alamos Section Manager

Megan Green, Hydrologist

Dylan Boyle, Hydrologist

Jaben Richards, Environmental Scientist/Specialist



# Our Los Alamos Team

Name	Title	Focus Area
Mariah Aragon	Office & Administrative Support	Administration
David Atencio	Environmental Scientist/Specialist	Air Monitoring, Gamma Radiation
Dylan Boyle	Hydrologist	Groundwater
Megan Green	Hydrologist	Stormwater, Sediments
Seva Joseph	Environmental Scientist/Specialist	Biota
Jaben Richards	Environmental Scientist/Specialist	Data Steward, Atmospheric Deposition
Rozellyn Sereda	Environmental Scientist/Specialist	Biota, Stormwater
Malia Volke	Environmental Scientist/Specialist	Biota, Stormwater
Stephen Yanicak	Section Manager	Project and Grant Management



# What We Do...

Source: <https://www.lanl.gov/>



Source: <https://www.sandia.gov/>



- Conduct independent environmental monitoring
- Provide unbiased, and publicly available information
- Develop/implement monitoring and assessment programs

Source: <https://www.wipp.energy.gov/>







# What We Do...

Produce quality scientific environmental data, including:

- Confirmation of DOE data
- Supply data and information to NMED's regulatory programs related to known and emerging contaminants
- Provide information to the community



*We do not conduct emergency responses; write permits or conduct compliance inspections/enforcement; or conduct environmental monitoring of transportation routes.*



# What We Do...Sampling

**LANL Oversight effluent  
sampling at the Espanola  
Wastewater Treatment  
Plant**



**LANL Oversight Atmospheric Deposition  
sampling at Valles Caldera**







# What We Do...Air Monitoring







# What We Do...Gamma Radiation Monitoring





# What We Do...Biota Monitoring (Fish/Insects)







# What We Do...Groundwater Monitoring

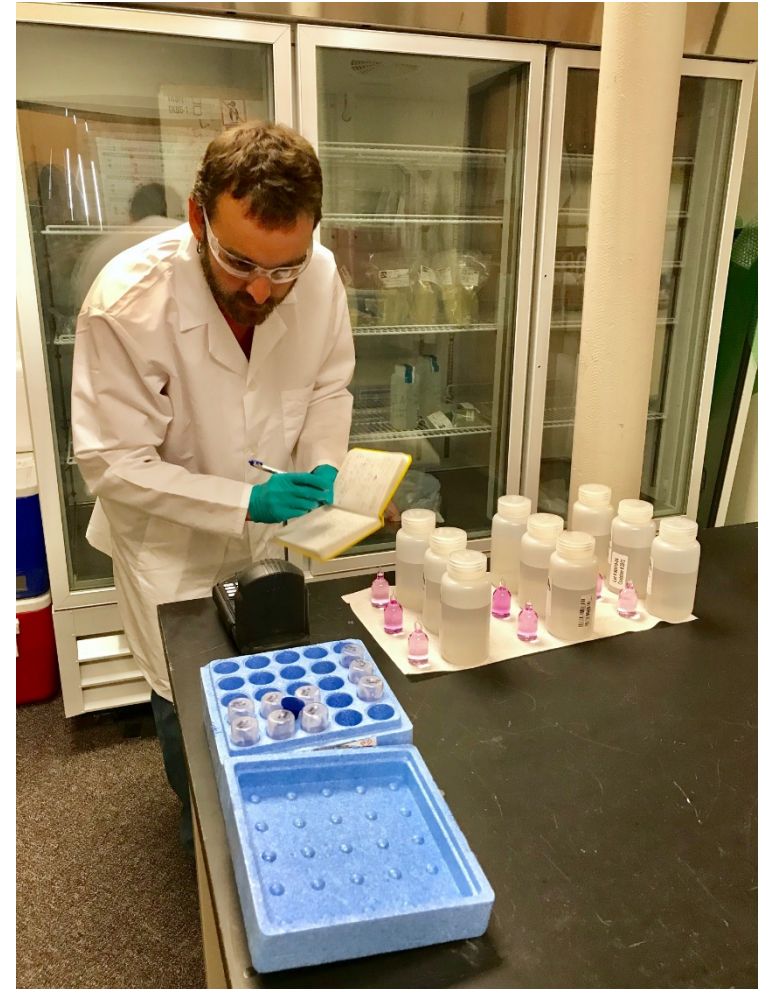
- Independent, confirmatory sampling of
  - ▣ LANL groundwater monitoring wells, springs and baseflows (including the Rio Grande)
  - ▣ Los Alamos and Santa Fe county water supply wells
  - ▣ Pueblo de San Ildefonso water supply wells, monitoring wells, springs, and baseflows





# What We Do...Groundwater Monitoring

- Additional objectives include:
  - ▣ Participation in Technical Teams
    - Chromium
    - RDX
  - ▣ Review and feedback on regulatory documents.
  - ▣ Analytes not collected by LANL
  - ▣ Different analytical methods to those used by LANL
  - ▣ Research emerging contaminants of concern



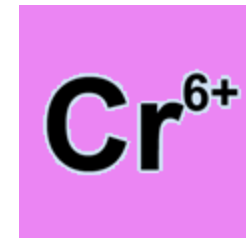


# What We Do...Groundwater Monitoring

## □ Groundwater program areas of focus at LANL:

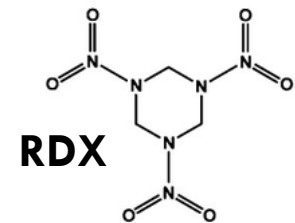
### ■ Hexavalent chromium groundwater contamination

- Mortandad and Sandia Canyons



### ■ RDX groundwater contamination

- Water, Canyon de Valle, and Pajarito Canyons



### ■ Los Alamos County water supply wells

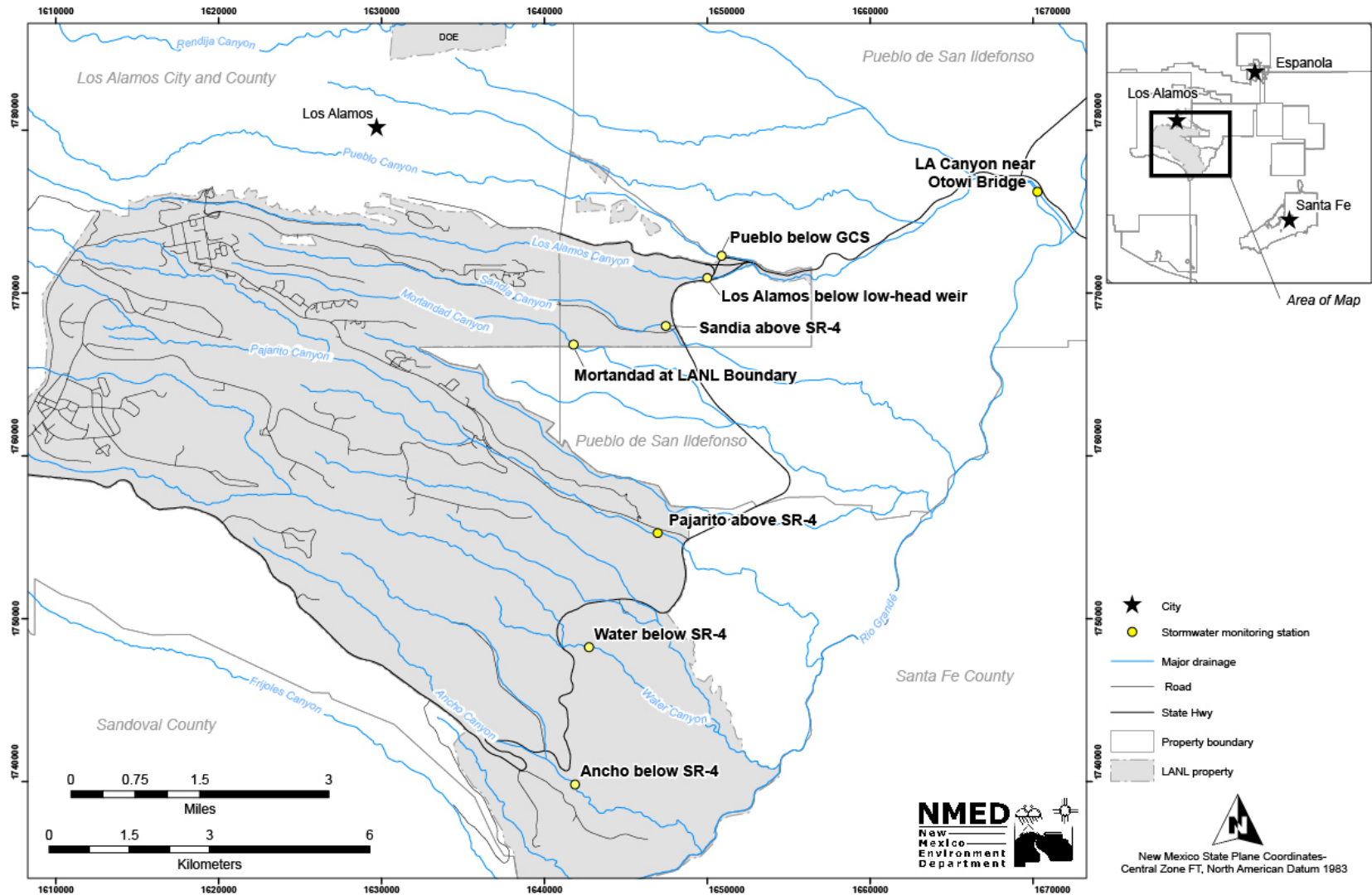
- Long term monitoring
- Vulnerability of PM-3 to the chromium plume







# Stormwater Monitoring – Watershed- Scale and Individual Permit





# What We Do...Storm Water Monitoring



- Monitor the transport of legacy contaminated sediments within the major watersheds in and around LANL
- Collect samples from stormwater runoff during Monsoon Season (June-October)
- Automated samplers allow for collection of samples throughout the runoff event
- Most sites co-located with DOE gage stations, focus on LANL's downstream perimeter
- One independent station on San Ildefonso
- Contaminants of concern include: Metals, Radioactive Isotopes (Uranium and Plutonium), and PCBs and other organics





# What We Do...Sediment Monitoring



- Sample sediments transported during previous Monsoon Season
- Co-sample with DOE EM's subcontractors
- Monitor the transport of legacy contaminated sediments
- Contaminants of concern include: Metals, Radioactive Isotopes (Uranium and Plutonium), and PCBs and other organics





# What We Do...Data Collection

- Data from 1992 though the present
- Multiple matrices/media
- All data undergoes validation and verification process







# What We Do...2019 Accomplishments

- 1,123 samples collected and analyzed in SFY 2019
  - ▣ Average of 4.5 samples per work day
- Approximately 481 individual analytes
  - ▣ Metals, Radiation, Emerging Contaminants, VOCs, High Explosives, PCBs, and more





# What We Do...Data Access

- ❑ All data are publicly available
- ❑ >29,773 individual records in SFY 2019 alone
- ❑ Intellus –New Mexico ([www.intellusnm.com](http://www.intellusnm.com))
- ❑ No login required
- ❑ Intellus trainings offered twice a year, or more frequently if requested
- ❑ Please contact us at anytime.
- ❑ <https://www.env.nm.gov/doeob/doe-ob-contact/>





# What We Do...Public Outreach

Living stream macroinvertebrate activity at the Environmental Day at Santa Clara Pueblo



Intellus New Mexico training





# Community Engagement



Stephanie Stringer, Director  
Resource Protection Division Director  
[stephanie.stringer@state.nm.us](mailto:stephanie.stringer@state.nm.us)  
505-827-2814