

**DOE Oversight Bureau, New Mexico Environment Department**

**Direct Penetrating Radiation Monitoring Report at  
the Waste Isolation Pilot Plant**

**Conducted by the  
New Mexico Environment Department DOE Oversight Bureau  
for Calendar Year 2017 Q-3**

**Prepared by  
Andrea K. Goodbar, Environmental Scientist**

**WIPP Oversight Section  
406 N Guadalupe Street  
Carlsbad, NM 88220  
(575) 885-9023  
andrea.goodbar@state.nm.us**

**Final Report**

**5/25/2018**

---

The purpose of this communication is to transmit direct penetrating radiation (DPR) dose levels collected at the Waste Isolation Pilot Plant during the third quarter of calendar year 2017. The data measurements were obtained using the E-PERM® electret ionization chamber system from Rad Elec Inc.

Acknowledgment:

This material is based upon work supported by the Department of Energy Office of Environmental Management under Award Number DE-EM0002114.

This report was prepared as an account of work sponsored by an agency of the United States Government. Neither the United States Government nor any agency thereof, nor any of their employees, makes any warranty, express or implied, or assumes any legal liability or responsibility for the accuracy, completeness, or usefulness of any information, apparatus, product, or process disclosed, or represents that its use would not infringe privately owned rights. Reference herein to any specific commercial product, process, or service by trade name, trademark, manufacturer, or otherwise does not necessarily constitute or imply its endorsement, recommendation, or favoring by the United States Government or any agency thereof. The views and opinions of authors expressed herein do not necessarily state or reflect those of the United States Government or any agency thereof.

## **Table of Contents**

Figures .....	i
Tables .....	i
Acronyms .....	ii
Introduction .....	1
Results .....	4
Conclusions.....	8
References.....	8
Appendix 1 .....	9

## **Figures**

- Figure 1. Location of NMED DOE-OB DPR monitors at WIPP and in the area surrounding WIPP
- Figure 2. NMED DOE-OB DPR Results for CY2017 Q-3, Average Quarterly Dose (mrad)
- Figure 3. NMED DOE-OB DPR Results for CY2017 Q-3, Average Quarterly Dose (mrad) mapped by sampling location

## **Tables**

- Table 1. Location and operational details of Direct Penetrating Radiation monitoring stations located inside the WIPP Exclusive Use Area and in the WIPP vicinity.
- Table 2. NMED DOE OB DPR Results for CY2017 Q-3, Average Quarterly Dose (mrad).

## **Acronyms**

CFR	Code of Federal Regulations
CY	Calendar Year
DOE	Department of Energy
DPR	Direct Penetrating Radiation
EDE	Effective Dose Equivalent
EPA	Environmental Protection Agency
mrاد	Millirad
mrem	Millirem
NESHAP	National Emission Standards for Hazardous Air Pollutants
NMED	New Mexico Environment Department
OB	Oversight Bureau
Q-3	Third Quarter
SD	Standard Deviation
WIPP	Waste Isolation Pilot Plant
WOS	WIPP Oversight Section

## **Introduction**

The U.S. Department of Energy (DOE) has provided grant funding to the New Mexico Environment Department (NMED) DOE Oversight Bureau (DOE-OB or the Bureau) to conduct environmental surveillance and monitoring at the Waste Isolation Pilot Plant (WIPP) since 2005. Monitoring programs include ambient air sampling, exhaust air sampling, general environmental sampling and measuring direct penetrating radiation.

The purpose of the Direct Penetrating Radiation (DPR) Monitoring Program is to monitor gamma radiation (or direct penetrating radiation) at the WIPP facility, in the area immediately surrounding, and along the local WIPP transportation routes.

There are no Federal or State standards for gamma radiation in the environment. To verify that activities at the WIPP are protective of public health and the environment, the NMED WIPP Oversight Section (WOS) gamma radiation dosage results are compared to average naturally occurring background gamma radiation dosages and with historical NMED DPR data.

On average, Americans receive a radiation dose of about 620 mrem each year. Half of this dose (310 mrem) comes from natural background radiation: radon in the air, cosmic rays and the Earth itself. The other half comes from man-made sources of radiation: medical, commercial, and industrial sources (Doses in our Daily Lives, U.S. Nuclear Regulatory Commission website <http://www.nrc.gov/about-nrc/radiation/around-us/doses-daily-lives.html>, accessed August 4, 2017).

The environmental dose standard for the WIPP facility is established in Title 40 Code of Federal Regulations (CFR) Part 191, Subpart A, "Environmental Standards for Management and Storage." The standard sets the regulatory limit for external radiation to a member of the public outside the exclusive use area boundary at 25 mrem per year to the whole body and 75 mrem to any critical organ.

In a 1995 memorandum of understanding between the U.S. Environmental Protection Agency (EPA) and the U.S. Department of Energy (DOE), the DOE agreed that the WIPP facility would comply with 40 CFR Part 61, Subpart H, "National Emission Standards for Emissions of Radionuclides Other Than Radon from Department of Energy Facilities." The NESHAP standard for radionuclides requires that the emissions of radionuclides to the ambient air from DOE facilities shall not exceed those amounts that would cause any member of the public to receive in any year an effective dose equivalent (EDE) of 10 mrem per year. (US Environmental Protection Agency 1995)

The NMED WOS has measured and compiled DPR dose levels at NMED DOE OB monitoring sites during the third quarter (Q-3) of the calendar year (CY) 2017. During CY2017, the DOE OB maintained a total of fourteen (14) monitoring sites located in the Exclusive Use Area at WIPP and ten (10) sites at off-site locations in the region surrounding WIPP. DPR dose data are collected quarterly. (See Table 1, Figure 1; Appendix 1).

Table 1. Location and operational details of Direct Penetrating Radiation monitoring stations located inside the WIPP Exclusive Use Area and in the WIPP vicinity.

<b>DPR Number</b>	<b>Location Name</b>	<b>Operational History</b>
DPR 01	Parking lot, WIPP Exclusive Use Area	CY2006 Q-3 to present
DPR 02	Railroad Entrance, WIPP Exclusive Use Area	CY2006 Q-3 to present
DPR 03	Southwest Fence Corner, WIPP Exclusive Use Area	CY2007 Q-1 to present
DPR 04	South Fence Center, WIPP Exclusive Use Area	CY2007 Q-1 to present
DPR 05	Near Southeast Fence Corner, WIPP Exclusive Use Area	CY2006 Q-3 to present
DPR 06	Far Southeast Fence Corner, WIPP Exclusive Use Area	CY2006 Q-3 to present
DPR 07	East Fence Middle, WIPP Exclusive Use Area	CY2007 Q-1 to present
DPR 08	Northeast Fence Corner, WIPP Exclusive Use Area	CY2007 Q-1 to present
DPR 09	North Northeast Fence Corner, WIPP Exclusive Use Area	CY2007 Q-1 to present
DPR 10	North Fence Salt Pile WIPP Exclusive Use Area	CY2007 Q-1 to present
DPR 11	Northwest Fence Corner, WIPP Exclusive Use Area	CY2006 Q-3 to present
DPR 12	Waste Handling Building Loading Dock West, WIPP Exclusive Use Area	CY2006 Q-3 to present
DPR 13	Waste Handling Building Loading Dock Center, WIPP Exclusive Use Area	CY2006 Q-3 to present
DPR 14	Waste Handling Building Loading Dock East, WIPP Exclusive Use Area	CY2006 Q-3 to present
DPR 15 <sup>1</sup>	Carlsbad, NM - Canal St.(inactive)	CY2006 Q-3 to CY2012 Q-2
DPR 16	Loving Weigh Station	CY2007 Q-3, CY2009 Q-3 to present
DPR 17	Malaga Volunteer Fire Department	CY2008 Q-1 to present
DPR 17a <sup>2</sup>	Gnome Site	CY 2007 Q-3
DPR 18	Hobbs Highway / North Access Road Intersection	CY2009 Q-1 to present
DPR 19	Southeast Control Tower	CY2011 Q-4 to present
DPR 20	Carlsbad, NM – NMED Office. (interior)	CY2012 Q-3 to present
DPR 21	Carlsbad, NM – NMED Office (exterior)	CY2012 Q-3 to present
DPR 22	Seven Rivers Highway / Brantley (formerly “Artesia”)	CY2017 Q-2 to present
DPR 23	North Loop Road	CY2016 Q-3 to present
DPR 24	South Access Road / NM 128 Intersection	CY2016 Q-3 to present
DPR 25	Jal Highway MM49	CY2016 Q-3 to present

<sup>1</sup> Monitoring at DPR 15 was discontinued after CY2012 Q-2 when NMED moved their office from the Canal Street location to 406 N Guadalupe Street.

<sup>2</sup> Monitoring at DPR 17a was completed for Q-3 CY 2007 then discontinued.

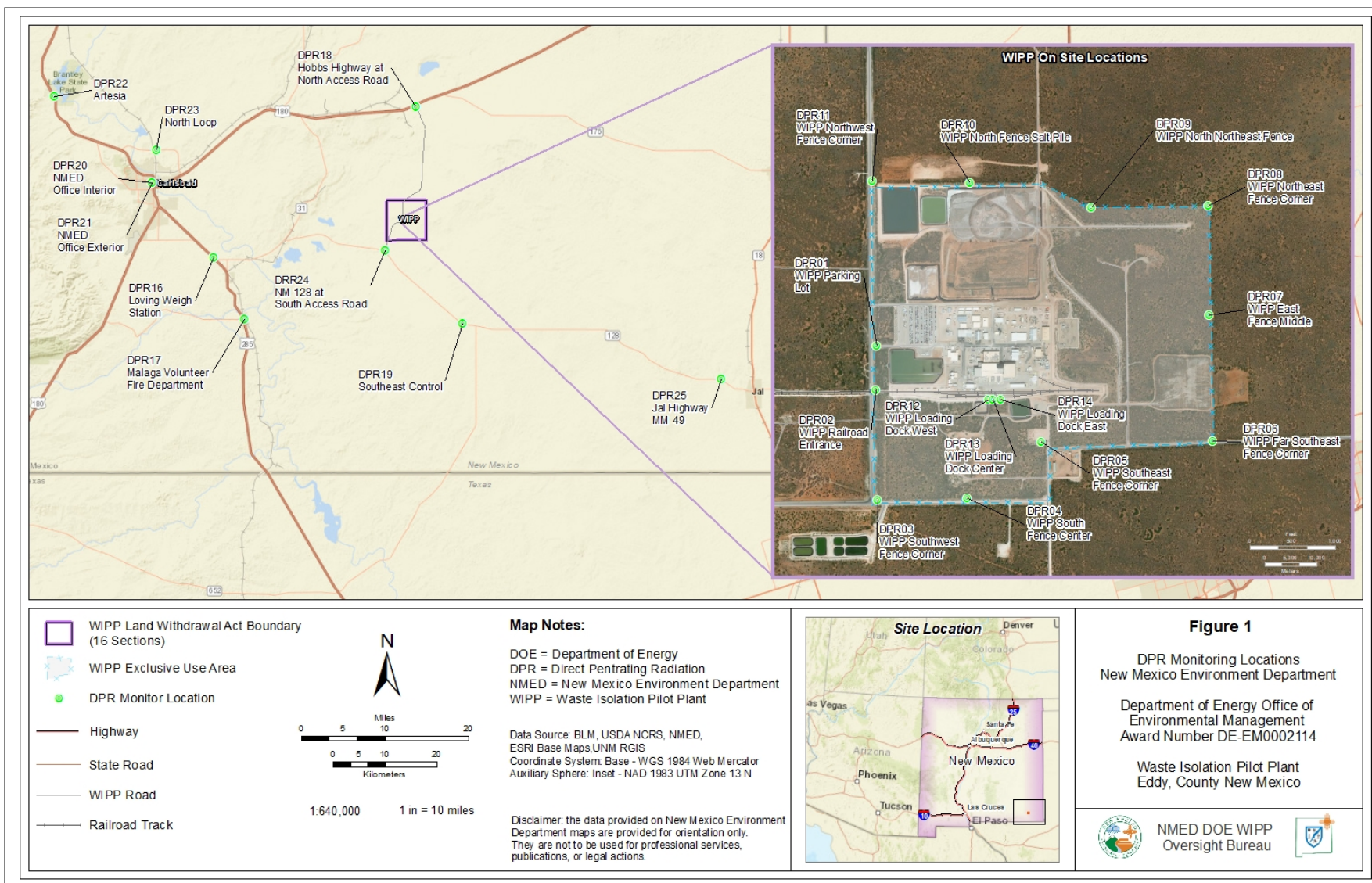


Figure 1. Location of NMED DOE-OB DPR monitors at WIPP and in the area surrounding WIPP



The data were obtained using the E-PERM® electret ionization chamber system from Rad Elec Inc. The electret passive ion chamber uses the principle of ion pair production resulting from gamma photons interacting with air molecules to reduce the voltage of a charged Teflon™ disk. (Rad Elec Inc. 2011) The chambers are housed in aluminum canisters designed to block gamma radiation from radon. Using a predetermined formula, the voltage drop indicates the amount of radiation passing through the chamber. (Rad Elec Inc. 2011) The WOS monitoring program reads electret passive ion chambers at the end of each quarter, readings are converted into quarterly dose values presented in units of millirads (mrad).

A rad is a unit of absorbed radiation dose, regardless of its source. The rem (Roentgen equivalent man) is a commonly used unit of ionizing radiation dose that uses a quality factor based on the source of radiation as it interacts with human body tissue. In the case of gamma radiation, the quality factor is one, and thus one rad is equal to one rem.

The quarterly dose rates have been normalized to reflect an actual quarter of 91.25 days. Normalized quarterly dose rates are summed for an estimated annual dose rate.

## **Results**

The complete data set for Q-3 is presented in Appendix 1. Average quarterly dose measured at each station during Q-3 is provided in Table 2, Figures 2 and 3. The average quarterly dose of all DPR monitoring locations was  $23.6 \pm 5.9$  standard deviation (SD).

DPR results at the WIPP ranged from a minimum average quarterly dose of 16.5 mrad at the WIPP Perimeter East Fence Middle (DPR07), to a maximum average quarterly dose of 39.0 mrad at the Railroad Entrance (DPR02). The average of all measurements at the WIPP site during Q-3 was  $22.2 \text{ mrad} \pm 5.7 \text{ SD}$ .

DPR results off-site ranged from a minimum average quarterly dose of 22.2 mrad at the Hobbs Highway / North Access Road Intersection (DPR18), to a maximum average quarterly dose of 39.2 mrad at the Southeast Control (DPR 19). The average of all measurements off-site was  $23.6 \text{ mrad} \pm 5.8 \text{ SD}$ .

A review of the historical DPR data collected at WIPP and in the surrounding region identified several potential outliers in the dataset. In these instances, one of the three electrets at a location had a voltage drop that was significantly higher or lower than the other electrets. Potential outliers were compared to the quarterly average across all stations, and data that exceeded 2 and 3 SD from the mean are identified in Table 2. Potential outliers have not been excluded from the results reported or analyzed.



Table 2. NMED DOE OB DPR Results for CY2017 Q-3, Average Quarterly Dose (mrad). No data is reported if the data were disqualified (DQ)<sup>3</sup>. One asterisk (\*) indicates that one of the three electrets' calculated dose exceeds two SD of the mean quarterly average for all stations without a disqualifying event listed in the field notes. Two asterisks (\*\*) indicates that one of three electrets' calculated dose exceeds three SD of the mean quarterly average for all stations without a disqualifying event in the field notes.

<b>DPR Number</b>	<b>Location Name</b>	<b>2017 Q-3 Average Dose (mrad)</b>
DPR 01	Parking lot, WIPP Exclusive Use Area	24.8
DPR 02	Railroad Entrance, WIPP Exclusive Use Area	39.0**
DPR 03	Southwest Fence Corner, WIPP Exclusive Use Area	19.7
DPR 04	South Fence Center, WIPP Exclusive Use Area	18.9
DPR 05	Near Southeast Fence Corner, WIPP Exclusive Use Area	20.3
DPR 06	Far Southeast Fence Corner, WIPP Exclusive Use Area	21.2
DPR 07	East Fence Middle, WIPP Exclusive Use Area	16.5
DPR 08	Northeast Fence Corner, WIPP Exclusive Use Area	19.6
DPR 09	North Northeast Fence Corner, WIPP Exclusive Use Area	17.7
DPR 10	North Fence Salt Pile WIPP Exclusive Use Area	19.4
DPR 11	Northwest Fence Corner, WIPP Exclusive Use Area	28.4
DPR 12	Waste Handling Building Loading Dock West, WIPP Exclusive Use Area	21.5
DPR 13	Waste Handling Building Loading Dock Center, WIPP Exclusive Use Area	23.6
DPR 14	Waste Handling Building Loading Dock East, WIPP Exclusive Use Area	20.7
DPR 16	Loving Weigh Station	23.6
DPR 17	Malaga Volunteer Fire Department	26.2
DPR 18	Hobbs Highway / North Access Road Intersection	22.2
DPR 19	Southeast Control Tower	39.2**
DPR 20	Carlsbad, NM – NMED Office. (interior)	DQ
DPR 21	Carlsbad, NM – NMED Office (exterior)	DQ
DPR 22	Seven Rivers Highway / Brantley (formerly "Artesia")	25.1
DPR 23	North Loop Road	DQ
DPR 24	South Access Road / NM 128 Intersection	24.7
DPR 25	Jal Highway MM49	23.1

<sup>3</sup> Data is disqualified if the canisters or electrets have been tampered with in any way. Details of the conditions for disqualification are provided in Appendix 1. Disqualified data are not included in any further analysis.

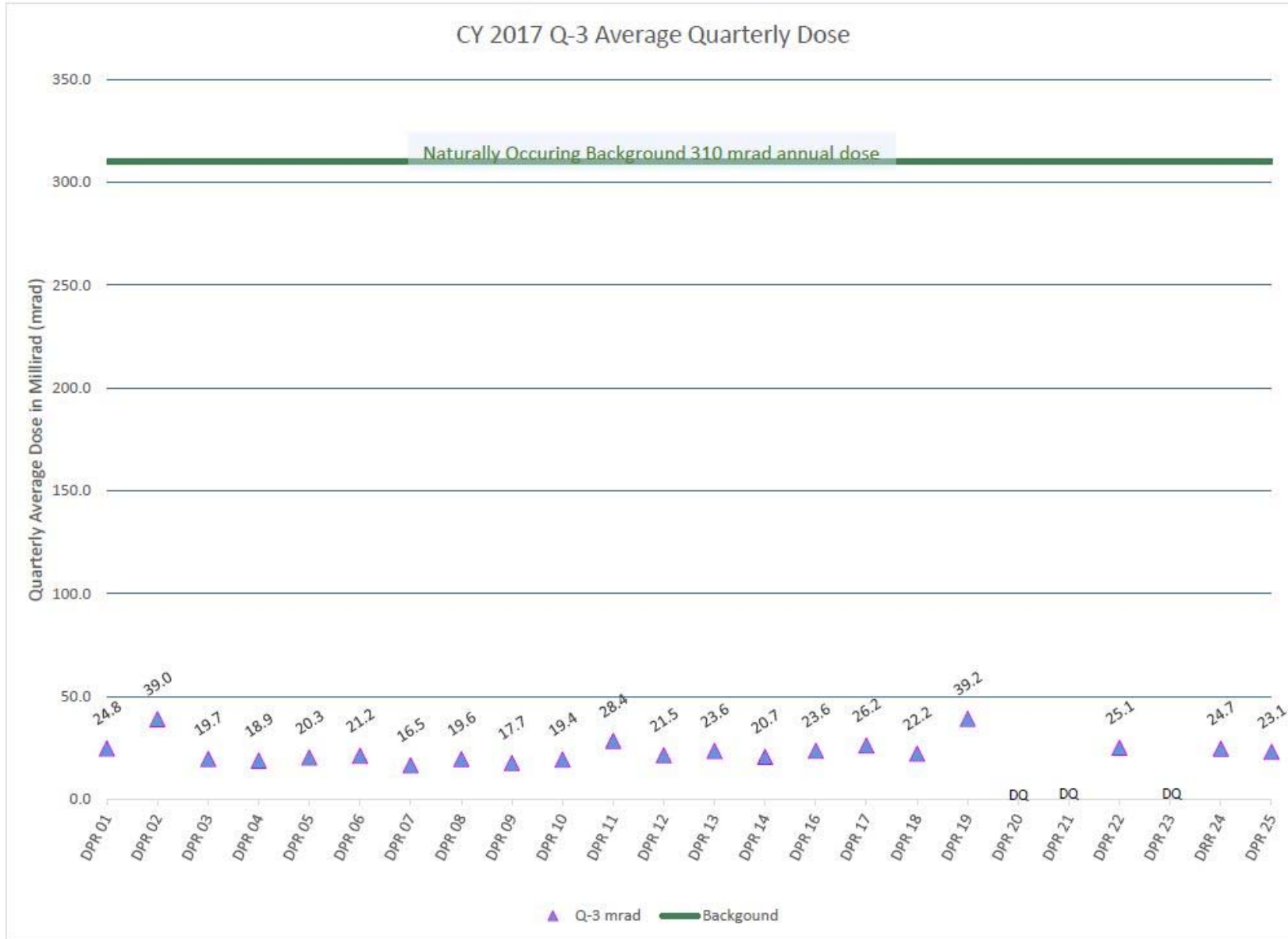


Figure 2. NMED DOE-OB DPR Results for CY2017 Q-3, Average Quarterly Dose (mrad)

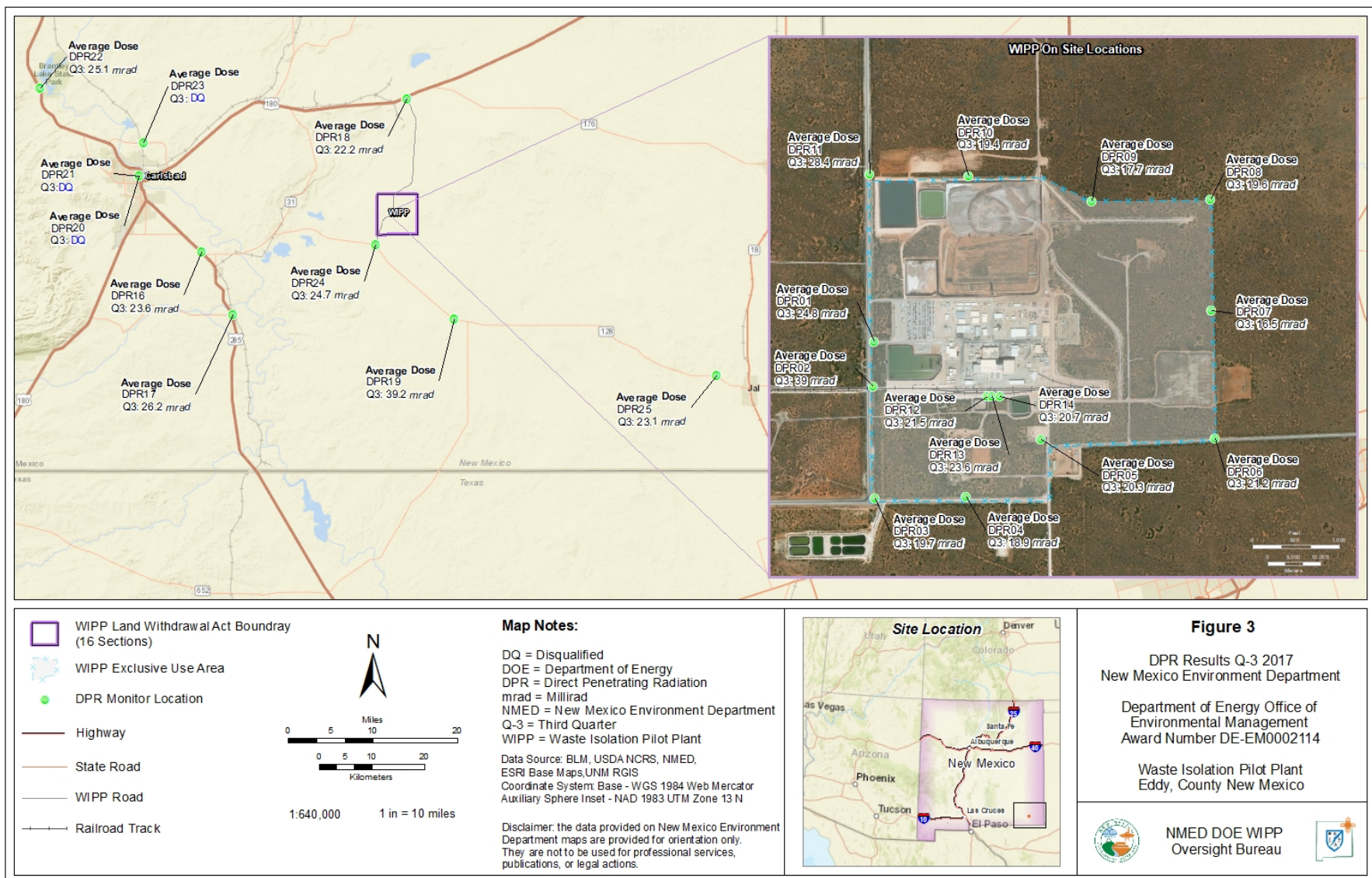


Figure 3. NMED DOE-OB DPR Results for CY2017 Q-3, Average Quarterly Dose (mrad) mapped by sampling location

## **Conclusions**

The doses calculated from the NMED DOE-OB DPR sites located at WIPP and in the surrounding region during CY 2017 Q-3 are comparable with historical results obtained by the Bureau since 2006. Overall the 2017 Q-3 data fall within the range of expected doses.

The average quarterly DPR dosages for Q-3 measured by the NMED DOE-OB at WIPP and in the region surrounding Carlsbad range from 16.5 to 39.2 mrad. If you extrapolate these quarterly doses for an entire year, the annual DPR dosages would range from 66.0 to 156.8 mrad. In the case of gamma radiation, the quality factor is one, and thus one rad is equal to one rem. These observed dose rates are less than the average U.S. natural background annual dose of 310 mrem which is the equivalent to 310 mrad.

## **References**

- Rad Elec Inc. 2011. "Environmental Gamma Radiation Measurements, Part II." *Rad Elect Manual E-Perm System Users Manual-2* 321. Rad Elec Inc.
- United States Nuclear Regulatory Commission. 2017. *USNRC Protecting People and the Environment*. July 6. Accessed August 14, 2017. <https://www.nrc.gov/about-nrc/radiation/around-us/doses-daily-lives.html>.
- US Environmental Protection Agency. 1995. "Memorandum of Understanding Between the U.S. Environmental Protection Agency and the U.S. Department of Energy concerning The Clean Air Act Emission Standards for Radionuclides 40 CFR part 61 Including Subparts H, I, Q and T." Departmental MOU.

## Appendix 1

Direct Penetrating Radiation Quarterly Dose Rates for CY 2017 Q-3. Data that have been disqualified are highlighted grey. A brief explanation for the disqualification is provided. One asterisk (\*) next to a value, indicates that the calculated dose exceeds two standard deviations of the mean quarterly average for all stations without a disqualifying event listed in the field notes. Two asterisks (\*\*) next to a value, indicates that the calculated dose exceeds three standard deviations of the mean quarterly average for all stations without a disqualifying event listed in the field notes.

Location	Electret ID	Start Date and Time	Stop Date and Time	Voltage Drop	Quarterly Dose Normalized (mrad)	Avg Quarterly Dose (mRad)
DPR01 WIPP Parking Lot	SHC 677	6/27/17 15:25	10/4/17 12:06	47	20.4	24.8
	SIR 643	6/27/17 15:25	10/4/17 12:06	48	20.0	
	SIR 699	6/27/17 15:25	10/4/17 12:06	81	34.1	
DPR02 WIPP Railroad Entrance	SHC 758	6/27/17 15:35	10/4/17 12:10	161	69.8**	39.0
	SHV 170	6/27/17 15:35	10/4/17 12:10	58	25.2	
	SHC 749	6/27/17 15:35	10/4/17 12:10	51	22.2	
DPR03 WIPP SW Fence Corner	SIR 448	6/27/17 15:38	10/4/17 12:12	42	17.7	19.7
	SIR 684	6/27/17 15:38	10/4/17 12:12	52	21.7	
	SIR 538	6/27/17 15:38	10/4/17 12:12	47	19.6	
DPR04 WIPP SW Fence Center	SHV 216	6/27/17 15:39	10/4/17 12:14	44	19.1	18.9
	SHC 704	6/27/17 15:39	10/4/17 12:14	46	20.8	
	SHC 685	6/27/17 15:39	10/4/17 12:14	37	16.8	
DPR05 WIPP Near SE Fence Corner	SIR 449	6/27/17 15:40	10/4/17 12:17	49	20.7	20.3
	SHC 816	6/27/17 15:40	10/4/17 12:17	45	20.6	
	SHC 657	6/27/17 15:40	10/4/17 12:17	44	19.8	
DPR06 WIPP Far SE Fence Corner	SIR 590	6/27/17 15:43	10/4/17 12:19	51	21.3	21.2
	SHC 667	6/27/17 15:43	10/4/17 12:19	43	19.7	
	SIR 765	6/27/17 15:43	10/4/17 12:19	54	22.7	
DPR07 WIPP East Fence Mid	SHC 674	6/27/17 15:44	10/4/17 12:21	39	17.7	16.5
	SGJ 037	6/27/17 15:44	10/4/17 12:21	33	14.8	
	SIR 694	6/27/17 15:44	10/4/17 12:21	41	17.1	
DPR08 WIPP NE Fence Corner	SHC 763	6/27/17 15:47	10/4/17 12:24	47	20.4	19.6
	SHC 760	6/27/17 15:47	10/4/17 12:24	48	20.7	
	SHD 974	6/27/17 15:47	10/4/17 12:24	41	17.5	
DPR09 WIPP NNE Fence	SIR 470	6/27/17 15:49	10/4/17 12:26	43	17.9	17.7
	SHC 850	6/27/17 15:49	10/4/17 12:26	39	16.9	
	SHC 647	6/27/17 15:49	10/4/17 12:26	41	18.3	



Location	Electret ID	Start Date and Time	Stop Date and Time	Voltage Drop	Quarterly Dose Normalized (mrad)	Avg Quarterly Dose (mRad)
DPR10 WIPP North Fence Salt Pile	SIR 517	6/27/17 15:51	10/4/17 12:27	48	20.2	19.4
	SIR 659	6/27/17 15:51	10/4/17 12:27	46	19.1	
	SIR 535	6/27/17 15:51	10/4/17 12:27	45	18.9	
DPR11 WIPP NW Fence Corner	SIR 499	6/27/17 15:53	10/4/17 12:28	105	44.5	28.4
	SIR 613	6/27/17 15:53	10/4/17 12:28	49	20.6	
	SIR 542	6/27/17 15:53	10/4/17 12:28	48	20.1	
DPR12 WIPP West Loading Dock	SHC 769	6/27/17 15:54	10/4/17 12:30	52	22.6	21.5
	SHC 722	6/27/17 15:54	10/4/17 12:30	45	19.9	
	SHC 705	6/27/17 15:54	10/4/17 12:30	49	21.8	
DPR13 WIPP Center Loading Dock	SHC 653	6/27/17 15:55	10/4/17 12:33	43	19.3	23.6
	SIR 647	6/27/17 15:55	10/4/17 12:33	88	37.0	
	SIR 478	6/27/17 15:55	10/4/17 12:33	34	14.4	
DPR14 WIPP East Loading Dock	SHC 842	6/27/17 15:57	10/4/17 12:36	51	22.8	20.7
	SHC 716	6/27/17 15:57	10/4/17 12:36	44	19.1	
	SHC 708	6/27/17 15:57	10/4/17 12:36	46	20.1	
DPR16 Loving Weigh Station	SHC 675	6/27/17 15:59	10/4/17 12:39	50	22.0	23.6
	SHC 696	6/27/17 15:59	10/4/17 12:39	45	19.6	
	SIR 489	6/27/17 15:59	10/4/17 12:39	70	29.3	
DPR17 Malaga VFD	SIR 682	6/27/17 16:00	10/4/17 12:40	64	26.4	26.2
	SIR 572	6/27/17 16:00	10/4/17 12:40	61	25.1	
	SIR 566	6/27/17 16:00	10/4/17 12:40	66	27.2	
DPR18 North Access Road	SHC 839	6/27/17 16:02	10/4/17 12:43	48	21.3	22.2
	SHC 687	6/27/17 16:02	10/4/17 12:43	46	19.9	
	SHC 745	6/27/17 16:02	10/4/17 12:43	58	25.4	
DPR19 Southeast Control	SHD 971	6/27/17 16:04	10/4/17 12:45	66	29.4	39.2
	SHV 195	6/27/17 16:04	10/4/17 12:45	45	19.8	
	SIR 650	6/27/17 16:04	10/4/17 12:45	160	68.5**	
DPR20 NMED Office Interior	Error					DQ
DPR21 NMED Office Exterior	Error					DQ
DPR22 Brantley	SIR 520	6/27/17 16:07	10/4/17 12:46	61	25.2	25.1
	SIR 716	6/27/17 16:07	10/4/17 12:46	70	29.1	
	SIR 720	6/27/17 16:07	10/4/17 12:46	51	21.1	
DPR23 Carlsbad Bypass	Water in canister					DQ

Location	Electret ID	Start Date and Time	Stop Date and Time	Voltage Drop	Quarterly Dose Normalized (mrad)	Avg Quarterly Dose (mRad)
<b>DPR24 South Access Rd</b>	SIR 557	6/27/17 16:10	10/4/17 12:50	50	21.1	<b>24.7</b>
	SIR 454	6/27/17 16:10	10/4/17 12:50	60	25.7	
	SIR 752	6/27/17 16:10	10/4/17 12:50	64	27.2	
<b>DPR25 Jal Hwy</b>	SIR 568	6/27/17 16:12	10/4/17 12:53	61	25.7	<b>23.1</b>
	SIR 738	6/27/17 16:12	10/4/17 12:53	58	24.5	
	SIR 525	6/27/17 16:12	10/4/17 12:53	46	19.2	